

The Window

The Growth Edge



High Holy Days 2026

Meet Cantor Margo Wagner

Cinema Emanu-El Returns

CONTENTS

PRAYER AND SPIRITUALITY

A Message from Rabbi David Stern	3
Editor's Note	4
High Holy Days 2026/5787	5
Conversation with Cantor Margo Wagner	10



Page 5

High Holy Days

We can't wait to welcome you!

COMMUNITY

New Season for Temple Book Club	11
Welcome Shabbat	12
Sh'ma Emanu-El Looks Ahead to Fall	13
ATiD Burgers & Beer Returns	13
MAC Season Celebration	14
Temple Teens Gear Up for the Year Ahead	15
Cinema Emanu-El	16
Meet Our New Temple Leaders	18
Celebration & Remembrance	20
Tributes	23
Annual Fund Renamed	25



Page 16

Cinema Emanu-El

Escape to Tobian on Tuesday nights in July

LEARNING

Corrie Mathias Helms the Center for Jewish Learning	26
Adult Learning Lectures 2026-2027	27
New Adult B'nai Mitzvah Class	28
Camp Emanu-El is a big splash!	29



Page 27

Adult Learning 2026-2027

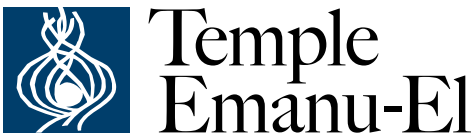
Learn about our stellar lineup of Jewish thought leaders

SOCIAL JUSTICE

Civil Rights Journey Announced	30
Kehillah: Jim Reisman and Jim Brodsky	31

Front cover: New Board members Andy Block and Graham Coombs help tend the Jill Stone Community Garden at the 2026 Board of Trustees orientation.

Back cover: JPride delegation at the Dallas Pride Parade



Founded in 1872
8500 Hillcrest Road | Dallas, Texas 75225
214.706.0000 | tedallas.org

Temple President
Sara M. Albert

Executive Director
Meredith J. Fried Fedyk

Clergy
Rabbi David E. Stern
Rabbi Debra J. Robbins
Cantor Vicky Glikin
Rabbi Amy Rossel
Rabbi Kimberly Herzog Cohen
Rabbi Michael Lewis
Cantor Margo Wagner

**Department of
Congregational Advancement**
Sandy Diamond, *Senior Director*

The Window
Connie Dufner, *Senior Director of Communications*
Ann Wilson, *graphic designer*
Thomas Booe, *writer*
Anjelica Ruiz, *writer*
Livia Stevenson, *writer*

When Blurring the Lines Leads to Clarity and Wholeness



Rabbi David Stern

At the end of July, we will come to Parashat Va'etchanan, the Torah portion which brings us the Sh'ma in Deuteronomy 6:4. It has me thinking of a summer some 20 years ago, when I gained new insight into the Sh'ma thanks to the work of the American painter James McNeill Whistler.

It happened at the Clark Art Institute in Williamstown, Massachusetts, which featured a Whistler exhibition called “Like Breath on Glass.” The title paraphrases an 1880 statement by the artist: “Paint should not be applied thick. It should be like breath on the surface of a pane of glass.” Whether a gloomy twilight on the Thames or the blues and greens of a summer meadow, in these paintings objects gave way to the immaterial, as bold lines become blurred contours, and color creates shape.

Whistler and his followers were criticized by some of their more conventional peers for creating works which lacked sufficient foothold in reality—full of color and suggestion, but lacking shape and story. Whistler and his school painted the feeling of rivers and fields, his critics claimed, but not the reality of the rivers and fields themselves.

But I think we know Whistler and his crew had it just right. When you are on a lake or a hiking trail, you see one level of the woods give way to the next, not with a boundary or a border sign, but with a subtle shift from dark green to silver to the sky's fading blue. Whistler's paintings reflected not only a reality of the landscape, but a reality of the human eye and the human heart.

Religious mystics celebrated Whistler's atmospheric paintings because of the reality they suggest: that our tendency to divide the world into horizontal and vertical lines, do's and don'ts, city and country, red state and blue state, reflects a need for order that we impose on a much more fluid reality. What Whistler and his followers saw and revealed is the reality of the woods by the summer lake—that if we stop long enough to let it, the world around us merges into a oneness that might well be there all along.

And so we come to the Sh'ma. To say that God is one sends numerous messages in our tradition: that God is unique, unitary, one and not many. But “God is one” also suggests that God's essential unity inheres in the world's creation—that the hills which merge into the clouds, or the days of tears which merge into laughter, or the anger we sometimes feel towards those we love the most, all reflect the essential unity of creation, and testify that Whistler was wise to blur the lines.

In the first verses of Genesis, God enters creation as *ruach Elohim mirachefet al penei hamayim*: a wind, a breath from God, that hovers on the waters. Even in a creation story marked by separations, the divine entrance is as a breath on the surface of water, separate and mingled and intangible and profoundly real: like the trees reflected in a summer lake, the whispered goodness in the human soul, the shimmering promise of a new day. Like an ancient prayer of timeless truth: *Sh'ma Yisrael, Adonai Eloheinu, Adonai Echad*. May we all experience the blessing of oneness in the months ahead.





Road Trips and Road Maps

This summer at Temple is all about where we're going and how we'll get there.

Our first Torah portion this month is Pinchas, an eventful five chapters of Numbers that include a war, a census, a challenge to inheritance rights and a detailed description of sacrificial rituals.

Especially pertinent for Temple life are two other takeaways: a transition in leadership and an introduction to Rosh Hashanah.

In Chapter 27:15-18, Moses asks God to "appoint someone over the community"—resonant words indeed as we contemplate the retirements of Rabbi David Stern and Rabbi Debra Robbins. We are fortunate to be uplifted and guided by our clergy and to welcome the newest member of the clergy, Cantor Margo Wagner, on p. 10. The Karla & Larry Steinberg Center for Jewish Learning also has a new leader in Corrie Mathias. See her story on p. 26. In other leadership news, meet the new members of the Board of Trustees and Leadership Council on p. 18. And our Temple teens have a cool new name and a new vibe. Check them out on p. 15.

In Pinchas Chapter 29, we read the second of two descriptions in the Torah of the observance of Rosh Hashanah. (See opposite page for the first.) Of course that's on our minds too. See p. 5 for our comprehensive guide to this year's High Holy Days, including many opportunities for families and the congregation to be together in joyous community. Mark your calendars now for registration opening on July 22.

In the digital era, Temple's internal census looks different than that of our ancestors; one of the ways we are building a strong community is through online enhancements that will make it easier to navigate the member portal and to remember our loved ones at *yahrzeit* (p. 19).

July is a wonderful time to sit in a cool, dark room and enjoy the four great films of Cinema Emanu-El. Now its 29th year, the popular series offers thought-provoking films, many accompanied by talk-backs with knowledgeable experts.

A new season of adult learning endowed lectures, a heartwarming grace note to our fabulous Yom Tzedek this past spring, a new season of Music Arts & Culture—and so much more lies on the road ahead. Temple's here to help fill your tank and start a fabulous journey together.





High Holy Days

2026 | 5787

“And God spoke to Moses, saying, ‘Speak to the people of Israel, saying, In the seventh month, on the first day of the month, you shall observe a day of solemn rest, a memorial proclaimed with blasts of trumpets, a holy convocation.’”

Leviticus 23:24-25

We pray to arrive at the High Holy Days prepared to look inward, grateful to look outward to our strong and loving community at Temple Emanu-El.

Let the coming season be one of strength and renewal, connection and covenant, as our hearts join with one another and to the Holy One.

Inside: Your Guide to the High Holy Days
Mark Your Calendars: Registration begins July 22

Highlights

ARRIVE EARLY! CROWDS ARE EXPECTED FOR EVENING SERVICES

We are entering our third year of offering one evening service each at Rosh Hashanah and Yom Kippur. With such a positive response over the past two years, we anticipate full capacity for these services. Please plan to arrive early to find a seat and visit with friends.

The Erev Rosh Hashanah service will be held at 6PM on Sept. 11. We will be ready to welcome you into the Olan Sanctuary at 4PM.

The Kol Nidre service will be held at 7:30PM on Sept. 20. We look forward to greeting you beginning at 5:30PM. This service historically has the largest number of in-person attendees. We are offering a **Kol Nidre Livestream Experience** in Stern Chapel if we reach capacity in Olan Sanctuary and Tobian Auditorium.

JOURNEY OF OUR COMMUNITY, THE JOURNEYS OF OUR LIVES

On Yom Kippur afternoon, Rabbi David Stern will teach from 12:45-1:30PM, and then from 1:45-2:30PM, our clergy team will offer a variety of meditative and thought-provoking experiences.

CONTINUING TO MAKE TEMPLE ACCESSIBLE TO ALL

Please let us know if you need special parking, assistance with a walker or wheelchair, a large-print book or hearing assistance device. Email at hhd@tedallas.org or call the main number, 214.706.0000, and a staff member will assist you.

CHILD CARE OFFERED UP TO AGE 8

We will offer child care during Erev Rosh Hashanah, Rosh Hashanah morning, Kol Nidre, Yom Kippur morning, and for Yizkor, N’ilah and Havdalah. We encourage you to bring your children back to Olan Sanctuary for the final moments of the service. ♥ **CHILD CARE Cost:** \$18 per child, per service. **Register:** tedallas.org/hhd

Selichot

SEPTEMBER 4-5

Elul

The month that precedes Rosh Hashanah, Elul is characterized by its soul searching and reflection to get ready for the High Holy Days.

SHABBAT

During the four Shabbat evening services of Elul, we will introduce the themes and music of the season so that we can begin to flex those spiritual muscles together in these important weeks.

PSALMS CLASS WITH RABBI DEBRA ROBBINS

Six online sessions, 9-9:45AM

August 12, 19, 26;

September 2, 23, 30

Lunch in the sukkah, September 26

We welcome you to our eighth season together using "Opening Your Heart with Psalm 27." Let's see what unfolds to give you hope or courage, inspire you to celebrate or forgive, and fill your heart as the High Holy Days season begins.

Register: tedallas.org/events

SH'MA EMANU-EL KICKOFF

August 25 | 6-8PM

Learn more about Sh'ma groups, meet new people and discover meaningful ways to deepen connection and belonging in the year ahead. Whether you're hoping to reconnect with your existing group, join a new group, or explore starting one of your own, this evening is an opportunity to gather, reflect and begin the year with intention. *See more on Sh'ma Emanu-El on p. 13.*

ALL ENDINGS ARE BEGINNINGS

Delores & Walter Neustadt Lecture Series



We welcome Rabbi Laura Geller for a meaningful Selichot weekend devoted to one of life's most universal experiences: transition. This theme feels especially resonant as our congregation prepares for a historic moment of its own: the upcoming retirements of Rabbi David Stern and Rabbi Debra Robbins after decades of visionary leadership.

Rabbi Geller is Rabbi Emerita of Temple Emanuel of Beverly Hills. Ordained by Hebrew Union College in 1976, she is the third woman in the Reform Movement to become a rabbi. She is the co-author of "Getting Good at Getting Older" and "Moments that Matter: Marking Transitions in Midlife and Beyond." She is also known for her longtime engagement with the Institute for Jewish Spirituality.

Together, we will explore what it means to honor the past, embrace the present and step courageously into the future.

SEPTEMBER 4

6:15PM: Shabbat evening service

Teaching: the Liminal Moment Between 5786 and 5787

Rabbi Geller invites us to consider how moments of transition, whether personal, communal or spiritual, can become opportunities for growth, gratitude and renewal. As Temple Emanu-El prepares for a new chapter in its history, we will have the chance to reflect on the changes that shape our own lives and the values we hope to carry forward.

SEPTEMBER 5

9AM: Torah Study

Therefore, Choose Life

Discover the many dimensions of life's transitions through the lens of the Book of Deuteronomy.

12:30PM: Lunch-and-Learn

Sh'ma Koleynu: Don't Abandon Me When I Grow Older

We will turn to sacred texts and rituals about caregiving, honoring parents and self-care as we explore the challenges and sacred opportunities.

7PM: Leil Selichot

Shabbat culminates with Selichot, the traditional gateway to the High Holy Days. Through reflection, ritual and moments of shared contemplation, Rabbi Geller will help us prepare our hearts for the work of the New Year. As Torah covers are changed and we symbolically cross from one year to the next, we will be reminded that Judaism celebrates transition—not as a disruption to life, but as a sacred part of it.

Register: tedallas.org/events

High Holy Days

SCHEDULE

Rosh Hashanah

SEPTEMBER 11-12

EREV ROSH HASHANAH

6PM: Olan Sanctuary

Remarks by Sara M. Albert, President

Sermon by Rabbi Debra Robbins

♥ **CHILD CARE**

8PM: ATiD service, Stern Chapel

Sermon by Rabbi Michael Lewis

For 20s and 30s, oneg reception following.

ROSH HASHANAH DAY

9AM: Tots and Their Families, Stern Chapel

Story by Rabbi Michael Lewis

Plus, Sally Shofar returns!

Geared to families with children up to kindergarten age, including a blessing for all children born since last Rosh Hashanah. Siblings of any age and grandparents are also welcome at this special service!

♥ **CHILD CARE FOLLOWING THIS SERVICE**

9:30AM: Olan Sanctuary

Sermon by Rabbi Michael Lewis

♥ **CHILD CARE**

10:30AM: Family Service, Stern Chapel

Story by Rabbi Amy Rossel

Plus, Sally Shofar returns!

Geared to families with children in grades K-5; siblings of any age and grandparents are welcome.

1PM: Stern Chapel

Experiential service that combines traditional Rosh Hashanah liturgy with poetry, reflection and contemporary music.

TASHLICH

Tashlich is the ritual casting of sins and regrets into flowing water. We will offer multiple observances in our congregants' neighborhoods. We request reservations (when registration opens on July 22) so that our facilitators will have enough materials for everyone. Note that while some sessions focus on particular age groups, everybody is welcome at any gathering.

10AM: Caruth Park, 7801 Hillcrest Ave., especially for tots

12:30PM: Caruth Park, especially for families

3:30PM: Caruth Park

4PM: Twin Lakes Park, 7400 Campbell Road

4PM: White Rock Lake, 4600 W. Lawther Drive., especially for ATiD, 20s and 30s

Kever Avot & Shabbat Shuvah

KEVER AVOT

August 23 | 1:30PM

Many in our community observe the mitzvah of visiting the graves of their loved ones during the High Holy Days season. This year, we've scheduled the Kever Avot observance before Rosh Hashanah. Please join Temple clergy and other members of the congregation in this service of reflection and memory at the Temple Emanu-El Cemetery.

SHABBAT SHUVAH

September 18-19

The Shabbat of Return features inspirational music, introspection, silence and study.

Yom Kippur

SEPTEMBER 20-21

KOL NIDRE

7:30PM: Olan Sanctuary
Sermon by Rabbi David Stern
♥ **CHILD CARE**

Note: In anticipation of reaching full capacity in Olan Sanctuary and Tobian Auditorium, we are pleased to offer the **Kol Nidre Livestream Experience in Stern Chapel.**

YOM KIPPUR DAY

9AM: Tots and Their Families, Stern Chapel
Story by Rabbi Michael Lewis
♥ **CHILD CARE FOLLOWING THE SERVICE**

10AM: Olan Sanctuary
Sermon by Rabbi Kimberly Herzog Cohen
♥ **CHILD CARE**

10:30AM: Family Service, Stern Chapel
Story by Rabbi Michael Lewis

YOM KIPPUR AFTERNOON

Journey of our Community, the Journeys of our Lives
12:45-1:30PM:

• Text Study with Rabbi David Stern

1:45-2:30PM

- Movement and Meditation with Rabbi Kimberly Herzog Cohen and Cantor Vicky Glikin
- Writing and Imagining with Rabbi Debra Robbins
- Text Study with Rabbi Amy Rossel
- Music in Stern Chapel
- Teen Experience

3PM: Prayer and Music of the Heart, Olan Sanctuary

4:30PM: Yizkor, Olan Sanctuary
Sermon by Rabbi David Stern
♥ **CHILD CARE**

5:30PM: N'ilah and Havdalah, Olan Sanctuary
♥ **CHILD CARE**

6:30PM: Congregational Break-the-Fast Bites

LEARN HOW TO BLOW THE SHOFAR

Temple loves to hear the shofar sounded by our members! Students and adults are invited to learn how to blow the shofar and to practice. Please **register at qrco.de/learnshofar** and we'll be in touch before Rosh Hashanah with next steps.



HIGH HOLY DAYS HUNGER RELIEF DRIVE

Truck at Temple
September 10–October 3

Support this annual effort to benefit organizations that depend on our help.

Financial Contributions

Online: tedallas.org/hungerrelief
Check: Mail to Temple with "Hunger Relief Fund" in the memo.

Amazon wish list:
qrco.de/hungerwishlist

Food Donations: Please bring non-expired, non-perishable items and pantry staples to the truck.

Volunteer: Sign up to help sort the truck at qrco.de/hungervolunteer

Contact: Tracy Davis Levi, Director of Engagement, tlevi@tedallas.org

Details

REGISTRATION BEGINS JULY 22

Watch for an email from Temple to begin the registration process. Temple staff and volunteers will be available for assistance at Temple's main line, at 214.706.0000 or by email at hhd@tedallas.org.

RECIPROCITY

If you or your family will be attending High Holy Days services at another congregation, please contact Ashley Greenwood, Assistant Director of Membership, at hhd@tedallas.org.

LIVESTREAMING

Visit tedallas.org at the service start time and you'll find prominent links to the High Holy Days services. Recordings will be available shortly after each service concludes.

BOOK OF REMEMBRANCE

Submissions accepted between July 22 and August 20



Temple will offer the Book of Remembrance for Yom Kippur Yizkor in print and online. Please submit the names of the loved ones you'd like to include by scanning the QR code and filling out the form beginning on July 22 or by contacting Athena Gonzalez at 214.706.0055 or agonzalez@tedallas.org.

Family Guide

We can't wait to welcome our families into the High Holy Days. We offer these suggestions to help families organize their holiday schedules. Parents, we offer child care for children up to age 8 so that you can nurture your own spiritual life.

FAMILIES WITH CHILDREN UP TO AGE 6

Erev Rosh Hashanah

- **6PM: Olan Sanctuary**
♥ CHILD CARE

Rosh Hashanah Day

- **9AM: Tots and their Families Service**
♥ CHILD CARE is available after this service for parents who want to attend the Olan Sanctuary service. Don't worry about arriving after the service has started. We're happy to see you!
- **10AM: Tashlich at Caruth Park** (one of many options throughout the day)
- **1PM: Stern Chapel**
The livestream is a great option if this service falls during naptime.

Yom Kippur

Kol Nidre

- **7:30PM: Olan Sanctuary**
♥ CHILD CARE

Yom Kippur Day

- **9AM: Tots and their Families Service**
- **10AM: Olan Sanctuary**
♥ CHILD CARE

- **4:30-6:30PM: Yizkor, N'ilah and Havdalah**
♥ CHILD CARE Parents are encouraged to pick up their children for the conclusion of the service, where we'll hear the shofar, celebrate Havdalah and enjoy break-the-fast bites.

FAMILIES WITH CHILDREN IN GRADES 1-5

Erev Rosh Hashanah

- **6PM: Olan Sanctuary**
♥ CHILD CARE

Rosh Hashanah Day

- **9:30AM: Olan Sanctuary**
♥ CHILD CARE
- **10:30AM: Family Service**
Includes teens helping to lead prayer and blow the shofar. Siblings of all ages are welcome.
- **1PM: Stern Chapel**
- **Tashlich**
Choose from many options offered throughout the day; pack snacks to enjoy with other families.

Yom Kippur

Kol Nidre

- **7:30PM: Olan Sanctuary**
♥ CHILD CARE

Yom Kippur Day

- **10AM: Olan Sanctuary**
♥ CHILD CARE
- **10:30AM: Family Service**
- **4:30-6:30PM: Yizkor, N'ilah and Havdalah**
♥ CHILD CARE We encourage parents to pick up their children for the conclusion of the service, where we'll hear the shofar, celebrate Havdalah and enjoy break-the-fast bites.

FAMILIES WITH TEENS

- Remind your teens who celebrated becoming *b'nai mitzvah* to bring their tallit to wear on Kol Nidre and at any daytime service.
- For Temple teens only—an event planned and led by teens at 1:45PM on Yom Kippur afternoon

Sukkot

SEPTEMBER 25-OCTOBER 1

SEPTEMBER 25

6:15PM: Shabbat Evening Service in the Sukkah

SEPTEMBER 26

10:30AM: Sukkot Morning Festival Service in the Sukkah

Simchat Torah

OCTOBER 2-3

OCTOBER 2

6PM: All-In Shabbat and Congregational Dinner featuring MAC artist-in-residence Joanie Leeds

OCTOBER 3

10:30AM: Simchat Torah Festival Service with Yizkor

4PM: Tot Shabbat Concert with MAC artist-in-residence Joanie Leeds



Joanie Leeds, Grammy-award winning recording artist and performer

‘The Best Way to Describe it is the Vibe’

As a musician, Cantor Margo Wagner knows what it takes to hit the right note. And she recognized it instantly at Temple Emanu-El.

“Temple was my last interview and audition,” she says of the cantorial search process that exposed her to a variety of congregations. “I felt this ‘aha’ feeling I hadn’t felt in any other place. It was really the people; the best way to describe it is the vibe. You just get this sense. It’s such a big and diverse congregation, and yet, in these groups, it feels intimate and small.”

Cantor Wagner, 29, who begins her cantorate at Temple on July 1, had also met Cantor Vicky Glikin over the years, as a songleader at Greene Family Camp, a student and as a student and as a fellow at the Goldring/Woldenberg Institute for Southern Jewish Living (ISJL) before she attended cantorial school.

“I thought we could work really well together, and I liked the prospect of easing into the role where I would have mentorship, where I could grow and flourish,” she says.

Cantor Wagner says she knew she wanted to be a cantor since her senior year of high school. She grew up in Aspen, Colorado, and became a mentee of Cantor Rollin Simmons, previously a student cantor here at Temple and now at Congregation Emanu El Houston.

“I saw what a cantor was and could do. Cantor Simmons helped me see the scope of the cantorate,” Cantor Wagner says.



Cantor Wagner at her HUC recital, in March, with Cantor Vicky Glikin.



Cantor Wagner, right, sings with mentors Elana Arian and Cantor Becky Mann.

Cantor Wagner majored in Jewish Sacred Music at Indiana University. She participated extensively in Jewish student life, which fueled her decision to work post-college for the ISJL in Mississippi, where Temple was one of her congregations. Then she was accepted to Hebrew Union College, where she was ordained as a cantor in May following five years of seminary training.

“When deciding next steps, I’ve always wanted to find the best fit rather than be bound to the location,” she says. “This community is really something that I could see myself fitting into.”

As she settles into life in Dallas, Cantor Wagner is eager to explore her Uptown neighborhood. When she’s not working, she enjoys pickleball, competitive game shows and mahjong. She’s inspired by Jewish musicians Elana Arian and Cantor Becky Mann, and by secular musicians such as Taylor Swift and Carole King.

Cantor Wagner is eager to continue to grow and build her skills both as a musician and as a member of a multifaceted clergy team. “The big reason I became a cantor is that we wear lots of different hats. I enjoy singing, but I mostly enjoy connecting to something bigger than myself; connecting to people to help facilitate those sacred moments is really special. It encompasses a lot of who I am as a person. It’s really special that I get to do this work.”

Watch Temple communications for lots of opportunities to meet Cantor Wagner, including the MAC Season Release Celebration on Aug. 16 (p. 14). She will be co-leading the following services with Cantor Glikin:

July 3 | 6:15PM

July 10 | 6:15PM

July 11 | 10:30AM, where she’ll give the *d’var Torah*

July 17 | 6:15PM, Expanded Kabbalat Shabbat

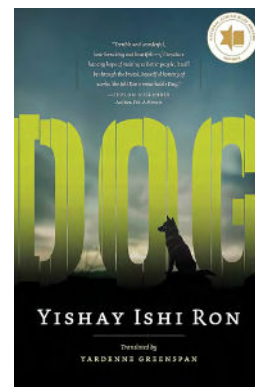
Calling all Readers!

Share your love of reading during the new season of the Temple Book Club.

The fall season of the Temple Book Club kicks off at 10AM on August 17 with a special in-person event featuring an online conversation with Yishay Ishi Ron and Yardenne Greenspan, the author and Hebrew translator of “Dog.” The winner of two National Jewish Book awards, “Dog” is a powerful and deeply human novel that follows an Israeli combat veteran’s struggle with post-traumatic stress disorder and addiction after October 7, 2023, revealing how an unexpected bond with a stray dog becomes a lifeline on his journey toward healing and redemption. The group is open to all and meets virtually on Zoom on the first Monday of every other month from 2-3PM.

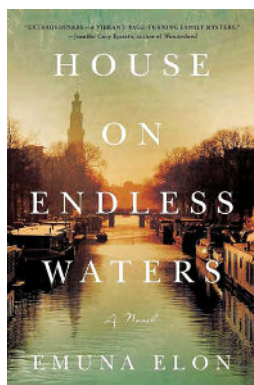
Register: tedallas.org/events

Contact: Anjelica Ruiz, Director of Library and Archives, aruiz@tedallas.org



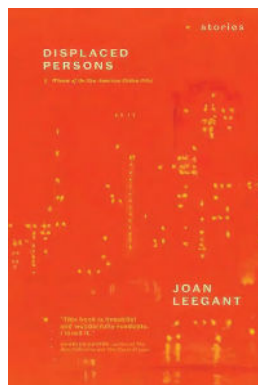
Author Talk August 17

“Dog”
by Yishay Ishi Ron
On Zoom, 10AM



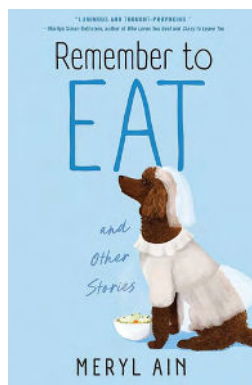
October 5, 2026

“House on Endless Waters”
by Enura Elon



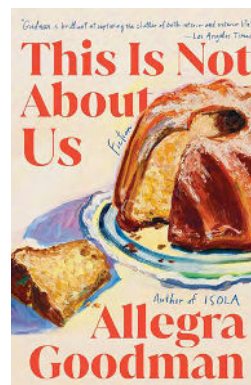
December 7, 2026

“Displaced Persons”
by Joan Leegant



February 1, 2027

“Remember to Eat and Other Stories”
by Meryl Ain



April 5, 2027

“This Is Not About Us”
by Allegra Goodman



June 7, 2027

“The Briar Club”
by Kate Quinn



Beat the heat and catch the Temple vibe as Café Emanu-El continues its monthly get-togethers through the summer.

All sessions are held from 2-3PM in Tycher Gathering Space:
July 15 | August 19 | September 16 | October 21

Register: tedallas.org/events



New to Temple? We can't wait to meet you at Shabbat!

By Anjelica Ruiz

Leaders of Temple's membership staff and committee are introducing a new approach to welcoming new members at Shabbat services.

Based on the belief that finding your place in a large community happens through relationships, we will be welcoming new and prospective members throughout the year at special Shabbat gatherings designed to foster connection and conversation.

Each gathering includes a special pre-oneg hosted by the Membership Committee, offering an intimate opportunity to meet fellow newcomers, connect with longtime members and learn more about Temple life. The dates have been intentionally selected throughout the year to showcase the variety of worship experiences that make up Temple Emanu-El's vibrant community.

The opportunities give our newest members a chance to experience different styles of Shabbat services, special programs and unique opportunities for connection.

As Membership Committee Chair Arlene Glazer shares, "Pre-onegs are a meaningful way for current members, new members and prospective members to meet and connect with people they may otherwise not have a chance to meet and connect with. Sharing a bite together as we begin to usher in Shabbat provides an easy connection with both people and prayer."

Upcoming Welcome Shabbat Dates

2026

August 14: New and Prospective Member Shabbat

October 16: Shabbat with scholar-in-residence Rabbi Sarah Bassin

December 11: All-In Shabbat at Hanukkah

2027

January 22: Shabbat with MAC artist-in-residence

March 5: Shabbat service

Members are encouraged to invite friends, family members and anyone interested in learning more about Temple Emanu-El to join us for these welcoming evenings of community and connection.

Contact: Ashley Greenwood
Assistant Director of Membership
agreenwood@tedallas.org

Sh'ma Emanu-El Gears Up for Fall

Sh'ma Emanu-El is a thriving program at Temple, with 34 active groups and 252 people enjoying the benefits of community and connection. Sh'ma groups restart every fall, so now's the perfect time to recommit to your current group or groups, find a new one or start one yourself!



To join an existing group:

Scan the Join a Group QR code and browse your options, click Learn More, then fill out the interest form for the group you'd like to join.



To start a new group:

Scan the Start a Group QR code and fill out the 2026/27 Sh'ma Group Creation form to create your own community!

If the group you're interested in is currently full, we encourage you to form a new group around the same topic.

Please email Shira Stevenson, Director of Small Groups and Diversity, at sstevenson@tedallas.org to ask questions, brainstorm a new group together or learn more about the characteristics of successful groups.



ATiD
20s and 30s at Temple

**BURGERS
& BEER**

August 19 | 5-8PM | Celebration Garden

It's time for ATiD's popular summer bash to connect with other 20s and 30s young adults and learn all about the exciting events for the 2026/2027 year. Gluten-free and vegetarian options will be available.

Register: tedallas.org/events.





2026-2027 SEASON RELEASE CELEBRATION August 16 | 4PM | Stern Chapel

With Cantor Vicky Glikin, Cantor Margo Wagner and friends!

This exciting performance will feature music from Music, Arts & Culture artists who will be visiting our community this year. It will also include an opportunity to get to know Cantor Margo Wagner.

Register: tedallas.org/events



SHINE *the light*

SUPPORT AND RESOURCES FOR SPIRITUAL AND MENTAL WELL-BEING

In-Person Grief Support

Last Tuesday of each month, 12-1PM: July 28, Aug. 25,
Sept. 29

Grief Support on Zoom

First Tuesday of the month, 12-1PM: July 7, Aug. 4,
Sept. 1

Substance Abuse Support for Friends and Families

Thursdays every week from 5:30-6:30PM
in person and on Zoom. Contact: Freda Heald,
fredaheald@yahoo.com

Here for You

Are you or someone you know experiencing fertility
challenges? We are exploring creating a support
group at Temple. For more information contact:
Meredith Pryzant, MSW

No Barriers

Finances should never be a barrier to participation in
Temple life. Confidential financial assistance is available
for most Temple events, tuition and dues.

For information or Zoom links, please contact:
Meredith Pryzant, MSW, Director of Pastoral
Support, mpryzant@tedallas.org
214.706.0000, ext. 2016

A New Vision and a New Name

Temple teens are beginning their second year of a re-imagined youth group with some exciting news to share.



The Temple Youth Group is changing its name to Temple Emanu-El Teens (TET) and is hard at work building a welcoming, engaging and meaningful community for our teens.

“More than just a new name, TET reflects our vision for a teen community that is built by teens, for teens,” says Mandi Toppel, the Temple staff liaison to the group. “The name is inspired by the

Hebrew letter (י), which is traditionally associated with goodness, potential and hidden sparks of light in each person. Just as the letter *tet* symbolizes the capacity for growth and positive impact, TET encourages our teens to discover their strengths, develop as leaders and bring their unique gifts to our community.”

TET is pleased to welcome the 2026-2027 Teen Executive Board that will lead the organization through the coming year. The calendar will offer a mix of social events, service opportunities, leadership development, Jewish learning and regional youth group involvement. Teens will also have opportunities to participate in transformative travel experiences that will allow them to explore Jewish identity, connect with peers from around the country and experience Jewish values in action.

“I’m proud of this amazing group of teens!” says Rabbi Michael Lewis, clergy advisor to TET. “They are building and creating something new, which takes a lot of work. These kids care about building community and their leadership is a sign that the next generation of leaders of the Jewish community is growing up right here at Temple.”

Ready to get involved? Contact Mandi Toppel, Assistant Director Teen Education and Engagement, mtoppel@tedallas.org



TET officers, l-r: Henry Lipnik (learning chair); Ella Levin (vice president for programming); Leila Davis (vice president for communications); Eres Stone (president); Lauren Israel (vice president for social action), Kyle Pinkus and Nathan Pass (co-vice presidents for membership).
Not pictured: Jack Gerstenhaber, Yuval Margalit, Alexandra Sheimberg



A Great First Year



Evan Israel, a 2026 graduate of Plano West Senior High School and last year's co-president, shares his reflections of the first year of the new youth group.

Being part of the teen youth group this year has been such a meaningful experience for me. It gave me the chance to grow closer with people in the community, develop my leadership and communication skills, and create great memories through fun events like going to PopStroke and the RoughRiders game. One of the best parts was seeing how the group brought teens together and encouraged more people our age to get involved in the Jewish community. I'd tell the next class to take advantage of every opportunity, step outside of their comfort zone, and really participate, because the friendships and experiences you gain go by faster than you think. I'm really grateful for everything this group has given me, and I hope the next group continues building an even stronger teen Jewish community together.



Cinema Emanu-El

Four consecutive Tuesdays

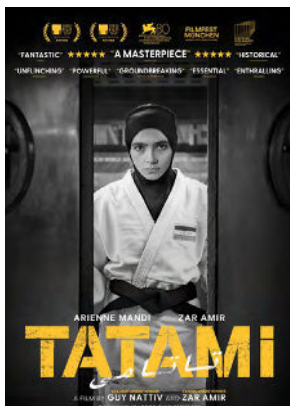
beginning July 7 at 7PM

Tobian Auditorium

\$6 PER FILM OR \$20 SEASON PASS

Register: tedallas.org/events

**Contact: Megan Sims, Adult Learning Events Manager,
msims@tedallas.org**



JULY 7 | Tatami

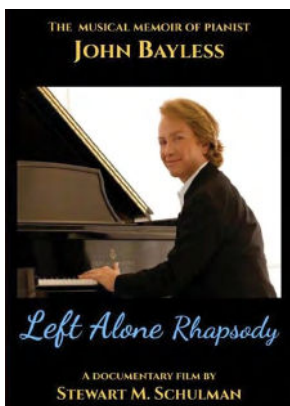
In this intense and suspenseful story, Leila, an Iranian judo athlete, competes in the world championship. While trying to bring home a gold medal, she must face a difficult decision—fight for herself or fight for her country.

1 hour, 45 minutes | English/Persian with English subtitles

After the film: Conversation with Jeff Hammett and Brian Silverstein of the Cinema Emanu-El Committee, and producer Mandy Taggar. In partnership with AJC.



SCAN TO
WATCH THE
TRAILER



JULY 14 | Left Alone Rhapsody

This documentary follows the fascinating life and career of renowned pianist John Bayless and his monumental rise to fame. After a 30-year career of playing with two hands, a debilitating stroke leads Bayless to reinvent himself as a one-handed musician.

1 hour, 40 minutes | English with English subtitles

After the film: John Bayless and Stewart Schulman will reflect on the film.



SCAN TO
WATCH THE
TRAILER



JULY 21 | The Ring

Based on a true story, "The Ring" is a profound adventure that follows a religious man, Arnon, as he travels to Budapest with his estranged daughter to recover his mother's heirloom. As his mother's health declines, he aims to find and return to her a ring that saved her life during the Holocaust.

2 hours, 2 minutes | Hebrew/Hungarian with English subtitles



SCAN TO
WATCH THE
TRAILER



JULY 28 | Hola Chau

Argentinian-Israeli aspiring film director Marcelo already lives in a crowded home. When his estranged family members show up indefinitely after a decade apart, a chaotic family reunion ensues. Expect a comedic and heartwarming story about dysfunctional family reunions, forgiveness and bridging generations.

1 hour, 28 minutes | Hebrew/Spanish with English subtitles

After the film: View a video created by committee member Ethan Kerstine, with resonant themes from the movie.



SCAN TO
WATCH THE
TRAILER

Meet Your New Temple Leaders

As of June 1, Temple welcomed four new members of the Board of Trustees and five new members of the Leadership Council. We extend a hearty welcome to these new leaders and express our gratitude to the entire Board and Leadership Council for the work they do day in and day out for Temple.



New Trustees



Andy Block

Andy, a retired clinical psychologist, has joined the Board from the Leadership Council. He has been involved in multiple Temple committees and is a regular at Temple services.

Karen Cheniae

Karen, a CFO for a local furniture company, is secretary/treasurer of the Temple Foundation Board. She serves on the Budget, Finance and Audit and Risk committees, and is a former chair of the ECEC Steering Committee. (Not pictured.)



Graham Coombs

Graham is a first officer for American Airlines and has served Temple in numerous roles, including the High Holy Days Advisory Committee, Torah Team, Cantor Search Committee and Membership Committee. He participates in ATiD and attends services regularly.



Peggy Zilbermann

Peggy is a community volunteer and longtime Temple leader who most recently served as chair of the Annual Fund. She has moved to the Board from the Leadership Council. She is a founder and board member of the Zilbermann Tzedakah Fund and served for many years as a co-chair of the former Caring Congregation.

New Leadership Council Members



Yuh Min Chook

Yuh Min is a professor at UT Southwestern, along with her husband, Michael Rosen. They are the parents of two college-age children, both of whom were involved at Temple from ECEC to confirmation! Yuh Min has previously served on social justice committees at Temple.



Erin Finegold White

Erin is a communications and marketing consultant who has called Temple home since preschool. She and her husband, Justin, are the parents of a daughter in the religious school and a son at ECEC. Erin is the founder of BvB Dallas, a local nonprofit dedicated to Alzheimer's research and awareness.



Andrew Kaufman

Andrew served on the search committee for the ECEC director and on the Sharing Our Strengths committee. He and his wife, Rachel, have two kids in the Religious School. He works at a private equity firm and serves as a vice chair for Jewish Family Service.



Kevin Kerber

Kevin, a technology professional, and his wife, Amy, have been Temple members for over 30 years and have two adult children. He is looking forward to reengaging in Temple life and leadership.



Erik Kogut

Erik, an investment banker, joined Temple four years ago after moving from New York with his wife, Rebecca Fine, who grew up at Temple. Eric and Rebecca have a son in the ECEC.

DIGITALLY YOURS

Making Temple Life Easier Online

Temple is pleased to introduce several digital enhancements designed to help you navigate the member portal more efficiently and more easily observe *yahrzeit* for your loved ones.

Member Portal

Beginning this month, the main login screen for the member portal on tedallas.org has been enhanced to help you better understand your financial statement and to provide more simplified instructions for accessing the portal. For more information, contact membership@tedallas.org.

Digital Yahrzeits

Also beginning this month, *yahrzeit* notifications are being sent by email as the standard method of communication. The change will make it easier for *yahrzeit* observers to receive timely reminders and respond online regarding when they'd like names read during Shabbat services. For more information, contact yahrzeit@tedallas.org.

Coming Soon!

In the coming months, Temple will be rolling out a new online system for our volunteer opportunities at Temple and in the community. This update is designed to provide a wider, more timely array of opportunities for our congregants to participate in acts of *tikkun alam*.

Stay Connected

Temple has a robust online presence and you're invited to follow along! Follow us on Instagram and like us on Facebook for snapshots of Temple life, events and activities. Subscribe to our YouTube channel for clipped sermons, songs and lectures.



Facebook: Temple Emanu-El Dallas



Instagram: @templeemanueldallas



YouTube: @TEDallas

Celebration & Remembrance

Compiled by Thomas Booe

BECOMING B'NAI MITZVAH



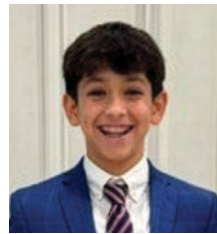
Amelia Gabriele
August 6
Daughter of Robin and Jason Gabriele
Coppell Middle School East
Tikkun Olam: Dancewear, costume and dance shoe drive for programs in need



Emersyn Gammieri
August 15
Child of Shelly and Vince Gammieri
Parkhill Junior High School
Tikkun Olam: International Rescue Committee



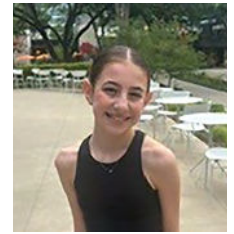
Eliana Ruth Palmer
August 15
Daughter of Sarah and Michael Palmer
Williams Middle School
Tikkun Olam: Meals on Wheels, Rockwall



Noah Thomas Lipp
August 22
Son of Jennifer and Evan Lipp
Parkhill Junior High School



Jack Seidenstein
August 22
Son of Lauren and Mickey Seidenstein
Renner Middle School
Tikkun Olam: Boys & Girls Clubs of Collin County



Sadie Pendroff
August 29
Daughter of Abbey and Ben Pendroff
Richardson West Junior High Arts and Technology Magnet
Tikkun Olam: Community service and volunteering

NOT PICTURED

Ian Crownover
August 29
Son of Tracey and Zane Crownover
Greenhill School

BABY NAMINGS



Joseph Rhodes Allen
Son of Ariella and Adrian Allen
Great-grandson of Rosie Stromberg



Joanna "JoJo" Barnes Kogan
Daughter of Dr. Sophie Barnes and Dr. Lawrence Kogan
Grandaughter of Debbie and Gerald Barnes (z"l)



Peyton Charlotte Bolen (left)
Daughter of Jolie and Thomas Bolen and

Haddie Naomi Durrin (right)
Daughter of Shayna and Tyler Durrin
Grandaughters of Wendy and Andy Starr

BABY NAMINGS



Bodie Mac Diamonstein
Son of Callie and Eric Diamonstein
Brother of Arthur and Riley



Scarlette Eleonora Glazer
Daughter of Stephanie and Sam Glazer
Granddaughter of Marion and Bennett Glazer (z"l)

NOT PICTURED

Miles Louis Levy
Son of Elizabeth Rosenberg
Levy and Joseph Levy



Benjamin Lawrence Horn
Son of Alex and Alexandra Horn
Brother of Elliot



Judah Sonogo
Son of Taylor and Aaron Sonogo
Brother of Joseph



Mason James Teiber
Son of Alex and Chad Teiber
Brother of Symon
Grandson of Lisa and Daniel Kessler and Cathy
and Todd Teiber

NEW AND RETURNING MEMBERS

Robert, Caitlin and Aidan Aybinder
Sophia, Guy, Oz and Blu Baron
Carolyn and Dwight Bartholomew
Alexander Brandt
Elise, Whitman, Chloe and Teddy Burns
Hannah, Tim and Theo Cassidy
Debbie and Sid Farber
Hedy and Colin Friedman
Samantha Hair and Danny Smotrich

Stephen, Kirsten, Mila, Isla and Zara Katzen
Samuel Longair, Evan and Hudson Noch
Carrie, Scott, Beau, Grace and Nora Mezvinsky
Cory Morrow
Josh, Lauren, Winifred and Wayne Pollon
Laurie Shwiff
Sapir, Amit, Joon, Nilu and Lucy Zabtani

MAZEL TOV



Mazel tov to Sara and Mark Albert, on the birth of their granddaughter, Jasmine Lucy Albert, daughter of Kyannah and Josef Albert, sister of Jude Albert, great-granddaughter of Cynthia Melnick and Ginette Albert.

WEDDINGS



Seth Ordiway and Maddie Steele



Sophia Huynh and Elliott Kahn

IN MEMORIAM

Carl Barnes

Husband of Lisa Graivier Barnes

Dr. Evan Bates

Father of Adam Bates, Kyle Bates, Ryan Bates and Sarah Bates

Son of Joan Bates

Brother of Todd Bates and Tony Bates

Dr. Jay M. Beck

Father of Gary Beck, Michael Beck and Pam Pluss

Miriam Bogoslavsky

Mother of Roman Bogoslavsky, Daniel Falkin and Matthew Falkin

Keith Howard Budner

Father of Keith Budner Jr. and Lee Budner
Brother of Bruce Budner and Craig Budner

Regina Bunnell

Mother of Katrina Gross

John Fitzgerald

Husband of Sue Fitzgerald
Father of Brendon Fitzgerald, Patrick Fitzgerald and Tim Fitzgerald

Burton S. Gilberg

Bennett Joe Glazer
Husband of Marion Glazer
Father of Paige Glazer and Sam Glazer
Brother of Betty Silverman

Lynn Edwin Goldstein

Husband of Sharan Goldstein
Father of Bill Goldstein, Peter Goldstein, Lee Goldstein and Amy Roseman

Brother of Gersa Statman

Gail Schwartz Hafele

Mother of James Hafele

Morris "Mo" Hasson

Husband of Susan Hasson
Father of Kathryn Hasson Levy, Mark Hasson and Steven Hasson

Janet Hershman

Mother of Michael Hershman, Laurie Judson and Susan Zetley

Seymour "Ron" Isaacson

Father of Nancy Isaacson-Tobin

Robert Edward Krasne

Dr. Rob Levy

Alan Markus

Father of Danny Markus and James Markus

Barry Miller

Husband of Jeanne Miller
Father of Cathy McCoppin, Bret Miller and Mark Miller

Marty Mintz

Husband of Barbara Miller
Father of Marc Mintz and Robert Mintz
Stepfather of Mark Miller and Lauren Schweig
Stepbrother of Robin Belfer, Bruce Nuzie and Neil Nuzie

Paulette Goldstein Mitchell

Wife of Larry Mitchell
Mother of Dr. Jessica George, Daniel Mitchell and Matt Rox
Sister of Lynette Less and Suzette Malkin

Joseph "Joe" Robinson

Husband of Mona Robinson

Father of Michael Robinson and Nicole Robinson

Lori Stahl

Sister of Cathy Golden
Mother of Sara Stahl

Phyllis Lynn Yonet Steinhart

Wife of Ron Steinhart
Mother of Barry Steinhart, David Steinhart and Kenneth Steinhart

Philip N. Sureck

Father of Brian Sureck, Kelli Sureck and Rob Sureck
Brother of Dena Birskin

Dr. Arthur Taitel

Father of Dana Freed, Monica Israel, Lee Taitel and Phillip Taitel

Shirley R. Tobolowsky

Mother of Mark Tobey and Emily Tobolowsky

Thomas Valine

Husband of Kim Valine
Father of Rachel Valine Brown, Sarah Palmer and Joseph Rafferty

Lovella Wiesenfeld

Wife of A.J. Wiesenfeld
Mother of Lindsey Kessler and Justin Wiesenfeld
Sister of Alex Amar and Oscar Amar

Gifts of Memory, Honor and Gratitude



OUR CONGREGATION

Dora Aronson Helping Hands Fund

Distributions by Rabbi David Stern to individuals in need of financial assistance, particularly in dire situations

Memory of Trudy Bogart

by Lynne Bogart

Memory of Denise

Levi-Lattes Brown

by Evelyn & John Johnson

Memory of Larry Bursten

by Susan & Joel Litman

Memory of Bennett Glazer

by Sister & Joel Steinberg

Memory of Marvin Labovitz

by Joan Skibell

Memory of Irwin Light

by Jeff, Natalie, & Ellie Light

Memory of Stephen G.

Sherman

by Carla Sherman

Memory of Phyllis L. Steinhart

by Suzi & Jack Greenman

by Irma Grossman

by Julie & David Kronick

by Sister & Joel Steinberg

Memory of Shirley

Tobolowsky

by Rosie Stromberg

Memory of Stephen Louis

Burtis Vogel

by Marguerite Burtis &

Peter Vogel

Susan Salom Clergy Good

Works Fund

Distributions to charitable organizations, individuals in need or community causes by Temple's clergy

Memory of Carol Alkek

by Linda Fisch

by Suzi & Jack Greenman

by Harriett Hoffman

Memory of Jay Beck

by Lisa & Steve Lieberman

Memory of Adrienne Epstein

by Judy & Robb Steinberg

Memory of Bennett Glazer

by Marsha Levine

by Lindsay & Jeffrey Steinberg

Memory of Nelda Golden

by Barbara & Michael Lynn

Memory of Lynn Goldstein

by Betty Jo & Bell

Memory of Loretta Gorman

by Tom Timmons

Memory of Rob Levy

by Linda & David Garner

Memory of Alan Markus

by Judy & Ronald Foxman

Memory of Martin Mintz

by Doty Weinstein

Memory of Paulette G.

Mitchell

by Betty Jo & Bell

Memory of Gracie

Pack Meiggs

by Cathy & Gary Golden

by Marsha Levine

by Lisa & Steve Lieberman

by Ruthie & Jay Pack

Memory of Linkie Seltzer

by Cathy Seltzer Negrel

Memory of Craig S. Smith

by Judy & Robb Steinberg

Memory of Phyllis L. Steinhart

by Barbara Banner &

Spencer Michlin

by Lynn & Bob Behrendt

by Bruce Chemel

by Judy & Ronald Foxman

by Ellen & Lee Salzberger

Memory of Philip N. Sureck

by Alisa & Brian Sureck

Memory of Gloria Thomas

by Anne Weissman-Baron

Memory of Elsa Weiss

by Judy & Robb Steinberg

Memory of Mike Weiss

by Judy & Robb Steinberg

Memory of Harry Zopolsky

by Joyce & Paul Zopolsky

Appreciation of Cantor

Vicky Gilkin

by Kellilyn & Andy Dropkin

by Barbara & Philip Einsohn

by Ellen & James Markus

by Jeanne Miller

by Cathy Seltzer Negrel

by Sally & Rick Rosenberg

by May Sebel

Appreciation of Rabbi

Kimberly Herzog Cohen

by Ellen & James Markus

Appreciation of Rabbi

Michael Lewis

by Kellilyn & Andy Dropkin

by Jeanne Miller

Appreciation of Cantor

Leslie Niren

by Betty Jo & Bell

by May Sebel

Appreciation of Rabbi

David Stern

by Kellilyn & Andy Dropkin

by Nancy & Ron Fellman

by Sally & Rick Rosenberg

Bat Mitzvah of

Audrey Shapira

by Adam & Debra Shapira

Conversion of Evan &

Madison Warshaw

by Amanda & Hunter Follett

by Marcia Grossfeld

Honor of Rabbi Michael Lewis

by Christina Lee & Dan Barish

by The 2026 Confirmation Class

Honor of Cantor Leslie Niren

by Berger/Oshman Family

Honor of Rabbi David Stern

by Christina Lee & Dan Barish

by Marcia Grossfeld

by Lisa & William Kleinman

by Pam & Steven Pluss

Marriage of Rabbi Michael

Lewis & Jake Ettinger

by Betty Jo & Bell

Anne and Sam Kesner Caring

Congregation Fund

Assistance for Temple members through all phases of life including hospitalization, elder care, military service, mental health challenges and grief

Memory of Esther Brotkin

by Ellen Samuels

Memory of Marvin Gerard

by Rozelle & Richard Gilman

Memory of Nelda Golden

by Lauren & Jeff Zlotky

Memory of Lynn Goldstein

by Jackie & Michael Hoffman

Memory of Mo Hasson

by Jackie & Michael Hoffman

Memory of Janet McCormack

by Irene & Bernard Raden

Memory of Jerome J.

Samuels

by Ellen Samuels

Memory of Phyllis L. Steinhart

by Jackie & Michael Hoffman

by Julie & Michael Lowenberg

Memory of Helaine

Trachtenberg

by Mindy Berger

Memory of Joseph Weinreich

by Ellen Samuels



OUR TEMPLE AND CEMETERY

Temple Emanu-El Cemetery Endowment Fund

Distribution from the Temple's foundation supporting the maintenance and improvement of the cemetery grounds

Memory of Jack B. Bell

by Louise Magrish Bell

Dorothy and Henry Jacobus Archives Fund

Support of special exhibits from our Archives

Memory of Cameron Dreyfuss

by Howard Horn

Rabbi Gerald J. Klein

Memorial Cemetery Fund

Beautification and improvements of the Temple cemetery

Memory of Harold Berman

by Toni & Morey Silverman

Memory of Phyllis L. Steinhart

by Laura & Andy Perlman

Rabbi Gerald J. Klein

Memorial Cemetery Fund

Beautification and improvements of the Temple Emanu-El Cemetery

Memory of Cameron Dreyfuss

by Randi, Bill, Dan &

Jessie Jacobson

Memory of Harvey J. Kopita

by Alisone & Jeffrey Kopita

Memory of Lewis Lamark

by Arlene Lamark



GENERAL

Temple Emanu-El General Operating Fund

Support of Temple's general programs and events

Memory of Maxine

Abramowitz

by Sandy & Rabbi Barry

Diamond

Memory of Jay Beck

by Linda & Ron Bliss

by Lois & Ross Finkelman

by Barbara & Billy Gutow

by Leslie & Bob Krakow

by Lynda & Mark Kutler

by Karla & Larry Steinberg

by Renee Stone

by Fran & Jeff Toubin

Memory of Jack B. Bell

by Betty Jo & David Bell

Memory of Zachary

Benjamin Bell

by Betty Jo & David Bell

Memory of Morris Epstein

by Ann & Fred Margolin

Memory of Bennett Glazer

by Patsy Fagadau

by Cindy & Alan Golman

by Marsha Levine

by Karla & Larry Steinberg

Memory of Nelda Golden

by Kimberly & Jeffrey Chapman

by Ed Koppman

Memory of Lynn Goldstein

by Karla & Larry Steinberg

Memory of Ronald Isaacson

by Shirley & Bill Davidoff

by Joyce & Joseph Rosenfield

by Lynn & Jay Vernon

Memory of Jerry L. Jones

by Michael Noone

Memory of Sam Kessler

by Barbara & Richard Massman

Memory of Livingston

Kosberg

by Gayle Johansen

Memory of Milton P. Levy, Jr.

by Nancy & Jerry Szor

Memory of Jerold Dennis

Michaelson

by Marcia Wallenstein

Memory of Martin Mintz

by Betty Jo & David Bell

Memory of Gracie Pack

Meiggs

by Kimberly & Jeffrey Chapman

by Kathy & Harlan Crow

by Sandy & Rabbi Barry

Diamond

by Claire & Dwight Emanuelson

by Anne & Alan Feld

by Cynthia & Robert Feldman

by Jane Goodman

by Barbara & Tom Graber

by Josalyn & Howard Jacobson

by Linnie & Michael Katz

by Kerri & Rick Lacher

by Marsha Levine

by Carol & John Levy

by Laura & Josh Mitchell

by Sondra & Alan Perkins

by Karen & Richard Pollock

by Phyllis & Jerome Prager

by Micki & Mike Rawlings

by Sheri & Andrew Rosen

by Laura Hall & Andrew Shaw

by Shelle & Michael Sills

by Pam & Richard Squires

by Catherine & Sam Susser

by Maddy & Mark Unterberg

Memory of Norman Risch

by Marilyn Fiedelman

Memory of Edgar A. Robinson

by Ruth Robinson

Memory of Joseph Rosenstein

by Joanne & Steve Levy

Memory of Morris Schwartz

by Ruth Robinson

by Janis & Daniel Gail
 by Sherry & Ken Goldberg
 by Juliette & Harold Goodman
 by Cheryl & John Hall
 by Ynette & James Hogue
 by Kathy & Tim Knott
 by Ed Koppman
 by Andrew Kupper
 by Kerri & Rick Lacher
 by Marsha Levine
 by John Lowe
 by Paul & Lee Michaels
 by Anne & Steve Music
 by Linda & Jerry Paine
 by Aphrodite & Sam Paulos
 by Ina Perlman
 by Thomas Pierce
 by Judi & Randy Ratner
 by Micki & Mike Rawlings
 by Regina Rogers
 by Karla & Larry Steinberg
 by Diana Strauss
 by Mary & Mike Sullivan
 by Eleanor & Jon Totz
 by Maddy & Mark Unterberg
 by Judy & Gary Weiser
 by Blanche & Terry Wilson
Memory of Philip N. Sureck
 by Dena Briskin
Memory of Shirley Tobolowsky
 by Sheryl & Gordon Bogen
 by Lois & Ross Finkelman
 by Phyllis & Jerome Prager
 by Monica & Torbejorne Purdy
 by Lorraine Raggio
 by Nancy & Jerry Szor
 by Sharyn Vane & Mark Tobey
 by Maddy & Mark Unterberg
Birthday of Ann Kimmell
 by Barbara & Richard Toranto
Birthday of Steven Lieberman
 by Ethel Zale
Honor of Cantor Vicky Glikin
 by Stacie Ramo & Brandon Ramo
Honor of Freda Heald
 by Berger/Oshman Family
Honor of Rabbi Kimberly Herzog Cohen
 by Stacie Ramo & Brandon Ramo
Honor of Benjamin Loeb
 by Julie & Bob Herman
Honor of Scott Peck
 by Julie & George Tobolowsky
Marriage of Rabbi Michael Lewis & Jake Ettinger
 by Sandy Diamond

Gratitude to Peggy Zilbermann & the 2025-2026 Annual Fund Committee
 by Sandy Diamond

Temple Emanu-El Endowment Fund
Distribution from the foundation supporting Temple's programs
Memory of Jay Beck
 by Jackie Bendorf
 by Marsha Meyers
Memory of Bennett Glazer
 by Kimberly & Jeffrey Chapman
 by Wendy Coleman
Memory of Martin Mintz
 by Linda Tavera-Martinez & John McDermott
Memory of Irwin Shafranek
 by Steven Shafranek
Memory of Phyllis L. Steinhart
 by Elaine Agather
 by Jackie Bendorf
 by Lynne & Larry Kohn
 by Diana & Todd Macclin
 by Polly Weisberg
Birth of Benjamin Horn
 by Meredith & Charles Pryzant



MUSIC AND PRAYER

Music Fund
Enhancement of Temple music programs
Memory of Jay Beck
 by June Leib
Memory of Julie Coplun
 by Elissa & Stan Hirschman
Memory of Louis Goldberg
 by Mindy & Rick Cohen
Memory of Elise Davis Leviton
 by Kathryn Levy
Memory of Rob Levy
 by Sheryl & Gordon Bogen
Memory of Barry Miller
 by June Leib
Memory of Jerome Naftalis
 by June Leib
Memory of Phyllis L. Steinhart
 by Tricia Michaelson
Memory of Philip N. Sureck
 by Sharon & Irwin Ornish
Memory of Stanton Unell
 by June Leib
Honor of Cantor Leslie Niren
 by Lynn & Bob Behrendt



ADULT PROGRAMS

ATiD (Young Adults)
Support of Jewish engagement of young adults in their 20s and 30s
Memory of Jay Beck
 by Erwin & Helen Mozer

Katherine F. Baum Adult Education Fund
Support for adult education programs
Memory of Alan Markus
 by Jackie & Michael Hoffman
Memory of Katherine F. Baum
 by Suzi & Jack Greenman
Memory of Nelda Golden
 by Sherri & Alan Darver
Conversion of Cameron Crabbe
 by Shirley & Bill Davidoff

Henry D. Schlinger Ethics Symposium Endowment Fund
Support of the ethics symposium
Memory of Janet McCormack
 by Henry Schlinger
Memory of Keith Budner
 by Lauren & Jeff Zlotky
Memory of Shirley Tobolowsky
 by Henry Schlinger
 by Gloria & Joe Pryzant
 by Judy & Ronald Foxman
 by Paula Schlinger & Jim Gerhardt



SOCIAL JUSTICE

Hunger Relief Fund
Collection of funds for hunger relief throughout the year, especially during High Holy Days and Passover
Memory of Keith Budner
 by Annette Corman
Memory of Alan Markus
 by Rosie Stromberg
Memory of Barry Miller
 by May Sebel
Memory of Charles Feldman
 by Helen Feldman

Memory of Gracie Pack Meiggs
 by Debbi Levy & Barry Rothschild
Memory of Jan Timmons
 by Vesta Snider
Memory of Jay Beck
 by Ilene & Steve Sanders
 by May Sebel
Memory of Leah Pollman
 by Cheryl Pollman
Memory of Lynn Goldstein
 by Fran & Jeff Taubin & Family
 by Harriet & Chris Collins
 by Julie & Michael Lowenberg
 by Laura Forson
 by Leslie & Bob Krakow
 by Marcy & Michael Grossman
 by Margaret Biller
 by Patty Traub
 by Randi & Mike Smerud
 by Stephanie & Jeff Epstein
 by Suzi & Jack Greenman
Memory of Marshall David Rosenfeld
 by Ilene & Steve Sanders
Memory of Paul Salzberger
 by Joan Salzberger
Memory of Phyllis L. Steinhart
 by Annette Corman
 by Debbi Levy & Barry Rothschild
 by Sharon & Irwin Ornish
 by Lynn & Armand Shapiro
Memory of Ron Margolis
 by Patty Traub
Memory of Shirley Tobolowsky
 by Annette Corman
Memory of Shaoul Israel
 by Nancy & Solomon Israel
Memory of Stanton Unell
 by Joan Salzberger
Memory of Sylvia Cohen
 by Vesta Snider
Birthday of Marlene Glasser Laner
 by Helen Feldman

Memory of Martin Mintz
 by Patricia & Matthew Gold
Memory of Nelda Golden
 by Judi & Randy Ratner
Memory of Nelda Golden
 by Julie & Michael Lowenberg
Memory of Phyllis L. Steinhart
 by Carol & Jon Weinstein
 by Rosie Stromberg
 by Sally & Rick Rosenberg
Memory of Shirley Tobolowsky
 by Carol & Jon Weinstein
 by Julie & Michael Lowenberg
 by Suzi & Jack Greenman
Bar Mitzvah of Ian Brauer
 by Sari Bahl
Honor of The Summer Harvest
 by Debbie & Josh Taub

Priscilla R. Stern Memorial Literacy Fund

Support of literacy projects in the general and Jewish communities
Memory of Gloria Mindes Silber
 by Suellen & A.J. Rosmarin
Memory of Nelda Golden
 by Paul Radman
Memory of Phyllis L. Steinhart
 by Suellen & A.J. Rosmarin
 by Gayle Johansen
 by Lindsay & Jeffrey Steinberg
 by Kim & Avie Schonwald

Social Justice Fund for Youth Education

Support of worthwhile educational causes for youth in need
Memory of Ernst Sommer
 by Helen & John Stettler
Memory of Gracie Pack Meiggs
 by OriAnn Phillips & Scott McCartney
Memory of Helene Greenwald
 by Janet Eickmeyer
Memory of Shirley Tobolowsky
 by Janet Eickmeyer

YOUTH AND EARLY CHILDHOOD EDUCATION
William P. Budner Youth Library Fund
Purchases of Judaic books and publications for students
Memory of Keith Budner
 by Elisa & Steven Reiter

Early Childhood Education Center (ECEC) Fund
Support of ECEC programs
Memory of August Danburg
 by Kerrie & Steven Wolfson
Memory of Ben Wiener
 by Hiarianne & David Wallenstein
Memory of Bennett Glazer
 by Frada & Alan Sandler
Memory of Erica Savadier
 by Frada & Alan Sandler
Memory of Dr. Jerry Schneider
 by Suzy & Larry Gikiere
Memory of Gracie Pack Meiggs
 by ECEC 2025-2026 Matanot 103 Class
 by Sherri & Alan Darver
Memory of Honey Rose Gilbert
 by Shelley & Richard Hirsh
Memory of Jay Beck
 by Frada & Alan Sandler
Memory of Jay Beck
 by Vivian & Nathan Bloch
Memory of Jeanette Wiener
 by Hiarianne & David Wallenstein
Memory of Martin Mintz
 by Lori & Charles Horwitz
 by Leslie & Bob Krakow
 by Nancy & Richard Fincher
 by Scott Price
 by Barbara & Stanley Katz
 by Valerie Cox
Memory of Nita Mae Tannebaum
 by Teresa & Robert Parker
Memory of Phyllis L. Steinhart
 by Barbara & Billy Gutow
 by Janice Sweet & Art Weinberg
Memory of Shirley Tobolowsky
 by Janice Sweet & Art Weinberg
 by Marcy & Michael Grossman
Anniversary of Hiarianne & David Wallenstein
 by Macki & Paul Ellenbogen



Honor of Peggy Schpok
by Joan Bernbaum

Gina Rosenfield Levy
Greene Family Camp
Scholarship Fund

Financial assistance to families for Greene Family Camp
Memory of Martin Mark
by Phyllis & Phil Stoup
Memory of Nanette Marks
by Phyllis & Phil Stoup

Paul Lande Summer Camp
Scholarship Fund

Scholarships for children to attend Jewish summer camp
Memory of Rose Rubenstein
by Mindy & Rick Cohen

Lomdim Project

Support of an open and inclusive community for religious school children with special needs

Memory of Phyllis L. Steinhart
by Elaine & Michael Griver

Metz Youth Fund

Scholarships for Jewish activities sponsored by Temple or other

Jewish organizations

Memory of Ron Isaacson

by Gail & Bob Weltman

Memory of Shirley

Tobolowsky
by Joyce & Joseph Rosenfield

Martin and Charlotte Weiss

Religious School Fund

Scholarships for religious school fees, books and additional expenses

Memory of Pearl Judith

Steinberger

by Evelyn Eugene Fox

Memory of Phyllis L. Steinhart

by Carol Hirsh

Shor/Lowenstein Youth
Scholarship Fund

Financial assistance to families for participation in youth programs

Memory of Jay Beck

by Ruthie & Alan Shor

Memory of Matan Elfenbein

by Mindy & Rick Cohen

Memory of Philip N. Sureck

by Ruthie & Alan Shor

Memory of Phyllis L. Steinhart

by Robin Kosberg & Mark

Washofsky

Memory of Shirley

Tobolowsky

by Robin Kosberg &

Mark Washofsky

Conversion of Giovanna

Gonzales

by Robin Kosberg &

Mark Washofsky



WRJ

Funds to support activities of Women of Reform Judaism

Freda Gail Stern Fund

Support of social action projects consistent with WRJ's mission

In Memory of Shiley

Tobolowsky

by Celia Saunders and

Minnette Klein

Yolanda Clark Fund

In Memory of Shiley

Tobolowsky

by Celia Saunders and

Minnette Klein

Y.E.S. Fund

Support of the Youth, Education and Service programs of

Women of Reform Judaism

In Memory of Shiley

Tobolowsky

by Celia Saunders and

Minnette Klein

The Temple Fund

Same Fund, New Name

The Temple Fund, formerly known as the Annual Fund, is Temple's highest philanthropic priority each year. While the name has changed, its purpose remains the same: to provide essential, unrestricted support that sustains every aspect of Temple life.

Gifts to The Temple Fund help make possible meaningful worship experiences, innovative learning opportunities, financial accessibility for all who seek a Temple community, pastoral care, life-cycle celebrations, community engagement, and state-of-the-art security and technology. Together with the annual endowment distribution, The Temple Fund provides approximately 17% of the operating revenue needed to support our congregation each fiscal year.

Your generous gifts each year ensure that every member of our community can experience the warmth, connection, and support that define Temple Emanu-El. By investing in The Temple Fund, you help sustain this vibrant congregation that we cherish today while ensuring that it remains the center of Jewish life for generations to come.

Together We Can
2025-2026 ANNUAL FUND

Thank you 2025-2026 Annual Fund donors! Your generosity made a meaningful impact in the life of our Temple Community.

A Heart for Learning and Judaism



Corrie Mathias, 33, recently found herself at a professional crossroads. After serving 12 intense years in secondary education, including six as an administrator, the Dallas native was planning to accept a job as a regional math educator.

Then a special opportunity came along. She did the math and it all added up to Temple Emanu-El, where she arrives in mid-July as the new Director of the Karla & Larry Steinberg Center for Jewish Learning.

"I grew up in the Young Israel of Dallas community," she says of the Sephardic community in North Dallas. Her father, Ezra Tita, was born in 1948 en route to Israel from Iraq, and fought in the 1967 war and the Yom Kippur war. He decided he wanted to go to college in the United States, and enrolled at the University of North Texas, where he met her mother, Barbara, who was studying music.

"I've always had a strong connection to the Jewish community, but I have never merged my personal and professional identity. This is so *min hashamayim*, from the heavens. I can use what I know from being in schools for the past 12 years to contribute to the Jewish community, specifically this synagogue with such rich history and staying power. It will be such an honor to serve it."

Corrie, who holds a master's degree from Dominican University in Chicago which partnered with Teach For America, and a bachelor's degree from Yeshiva University in New York, started her career as a special education teacher for Chicago Public Schools. From there she was recruited to Achievement First North Brooklyn Prep.

"It was one of the highest performing charter schools in New York, and a blueprint for all charter schools in the nation," she says. "It supercharged my administration career."

In 2019, she started as an assistant principal at Montopolis Academy in Austin, a member of IDEA Public Schools, the largest charter school network in Texas. She then became executive principal in 2023, serving until the end of the 2025-2026 school year.

"I describe my experience as adaptability, flexibility and rooting myself to the community I'm in," she says.



Corrie Mathias, second from left, with Jordan Carson and friends



With students at the First North Brooklyn Prep



With staff at Montopolis Academy, 2024

She and her partner, Jordan Carson, knew that they wanted to return to Dallas, where her family still lives. She enjoys running marathons and for fun, takes courses in a Hebrew immersion program.

Corrie is very much looking forward to bringing her experiences in presenting a strong Jewish identity along with her educational expertise to the Center for Jewish Learning.

"I've had a lot of tests in my professional career of being the only Jewish person in every professional setting. I can only imagine what Jewish youth are feeling right now. I have the experience of changing the narrative by showing up as a strong Jewish person in every setting," she says. "It's imperative that students go off into the work force with a foundation that's not shaky, where they don't have to hide any parts of themselves."



Karla & Larry Steinberg
Center for Jewish Learning

Adult Learning 2026-2027

Join us for a year of engaging ideas, meaningful conversations and transformative learning!
Our 2026–2027 Adult Learning series will explore timely issues,
enduring questions and the rich diversity of Jewish thought, tradition and culture.



SEPTEMBER 4-5, 2026 (SELICHOT)
DELORES & WALTER NEUSTADT LECTURE SERIES

Rabbi Laura Geller

Rabbi Emerita, Temple Emanu-El, Beverly Hills, California
Topic: Transitions
See details on p. 6.



OCTOBER 16-18, 2026
HENRY D. SCHLINGER ETHICS SYMPOSIUM

Rabbi Sarah Bassin

Director of Clergy and Congregations, HIAS
Topic: Immigration and the work of HIAS



DECEMBER 18-20, 2026
RABBI LEVI A. OLAN LECTURESHIP

Orly Erez-Likhovski

Executive Director, Israel Religious Action Center
Topic: Social justice and advocacy in Israel; the work of the IRAC



JANUARY 8-10, 2027
CANDICE AND ROBERT HAAS VISITING SCHOLAR

Leah Hochman, Ph.D.

Associate Professor of Jewish Thought, Hebrew Union College
Topics: Jewish food and culture



FEBRUARY 26-28, 2027
KATHERINE F. BAUM ADULT EDUCATION SCHOLAR

Rabbi Michael Marmur

Professor of Jewish Theology, Hebrew Union College
Topic: Deep dive into Jewish thought

A Path to Adult B'nai Mitzvah

Participants in the Adult B'nai Mitzvah program at Temple Emanu-El will engage deeply with other members; study Hebrew in preparation to read from the Torah; learn about prayer and spiritual practices in synagogue services and daily life; work with others on projects to repair the world, and celebrate a personal commitment to Jewish living in our community.



Adult B'nai Mitzvah class of 2017

The new adult *b'nai mitzvah* class will celebrate the culmination of a year of study beginning in the fall of 2027 as participants read small portions of the Torah and share personal interpretations of the Torah text, but it is so much more!

Together with Rabbi Debra Robbins and Cantor Vicky Glikin, participants will share class experiences focused on spiritual practices of prayer and learning to interpret Torah through the lenses of our tradition and our own lives.

Prerequisites

Basic Hebrew reading to learn the alphabet and sound out basic words. Two classes have already been offered and more will be offered over the next few months.

Cost: \$180 for full program, which includes books, Shabbat dinners and lunches.

Important Details

Registration deadline: Aug. 3

Orientation: Aug. 30, 9:30-11AM

Curriculum: The program will include seven Sunday mornings for Torah study, seven weekday evenings for exploring prayer, occasional Shabbat experiences and special sessions in summer of 2027 for Torah reading preparation.

Celebrations: Fall 2027 to January 2028

Contact: Megan Sims, msims@tedallas.org

Register: tedallas.org/events



The Magic of Camp Emanu-El

Summer at Camp Emanu-El is filled with sunshine, laughter, creativity and discovery. From bubbly adventures and water slide excitement to Shabbat celebrations and unforgettable friendships, each day brings new opportunities for our youngest learners to explore, play and grow. Take a look at some of the moments that made this summer so special.



Walk Through History. Return Inspired.

TEMPLE ANNOUNCES A CONGREGATIONAL CIVIL RIGHTS JOURNEY

By Livia Stevenson

What can we learn when we walk the same streets, cross the same bridges and stand in the same sacred spaces where history was made?

From Nov. 5-8, Temple Emanu-El members are invited to join Rabbi Kimberly Herzog Cohen for a powerful Civil Rights Journey through the Deep South. In partnership with Etgar 36, this immersive experience will take participants through Atlanta, Georgia, and Montgomery, Selma and Birmingham, Alabama, to explore the history, courage and enduring lessons of the Civil Rights Movement.

This journey brings history to life through visits to significant landmarks, including the Equal Justice Initiative’s Legacy Museum and National Memorial for Peace and Justice, the Rosa Parks Museum, Ebenezer Baptist Church and the Edmund Pettus Bridge. Along the way, we’ll hear firsthand stories from individuals connected to the movement’s legacy and engage in meaningful conversations about its enduring impact. Through these experiences, we’ll consider how Jewish values can guide us in the ongoing pursuit of justice.

Participants will explore the unique relationship between Jewish identity and the struggle for civil rights. We will learn about the role Jews played in the movement, reflect on our community’s responsibility to confront injustice, and consider how the lessons of the past can inform our actions today.

We’ll walk through history, reflect on its lessons and explore how we can help shape a more just future.

Register: tedallas.org/events by August 14.



Photo credits: Equal Justice Initiative/Human Pictures

Spreading the Tzedek

Yom Tzedek's impact is reaching beyond the day we spent together in April, learning and doing about Temple's social justice work.

It had a very personal impact on two doctors named Jim! Jim Reisman is a retired dentist and home gardener who had bounty to share from his country farm in Gordon, Texas. And Jim Brodsky is an orthopedic surgeon with a home garden in Dallas and a lifelong passion for and practice of gardening.

"I always have extra fresh produce after my weekend trips," says Jim Reisman. "We like to distribute to family and friends, but even then we have extra."

At Yom Tzedek, Jim had attended the breakout session for the Jill Stone Community Garden and was impressed by the efforts to provide fresh produce weekly to the Vickery Meadow Food Pantry. He asked garden leaders Wendy Leanse and Lori Droppo if the garden could use his extra vegetables. They enthusiastically said yes! So Jim brings by vegetables on Sundays after weekend trips to his farm. He then recruited the other Jim to help. "I garden year round, so I'm happy to bring extra vegetables by on days that the gardeners are harvesting," says Jim Brodsky.

Wendy and Lori couldn't be more pleased. "We're all about 'grow more, feed more,'" says Wendy. In recent months, the volunteer gardeners have added an extra harvest day and are able to bring fresh organic produce to the food pantry on Wednesdays, Thursdays and Saturdays. "It's a great way for people to be involved with the work of the garden."

Do you have a contribution of fresh vegetables from your home garden that you'd like to share?

The Temple garden will find them a good home. Just contact Wendy at 214.502.2416 or at shoremrcl@aol.com.

And you don't need to be named Jim to help!



Jim Reisman, Wendy Leanse, Jim Brodsky and Lori Droppo collaborate on contributions of produce from flourishing home gardens.



On Sundays, Jim Reisman brings his extra bounty from his country garden in coolers to the Jill Stone Community Garden. Jim Brodsky shares his garden's abundance on harvest days so it can be included with delivery to the Vickery Meadow Food Pantry.

The Window (USPS #017-824) is published six times per year by Temple Emanu-El Congregation, 8500 Hillcrest Road, Dallas, TX 75225-4204. Periodicals Postage Paid at Dallas, Texas.

POSTMASTER, send address changes to:

Temple Emanu-El Window
8500 Hillcrest Road
Dallas, Texas 75225-4204

PERIODICALS
Time Sensitive Material

