

The Window

A photograph of a man and a woman in a garden. The woman, on the left, is wearing a bright yellow hoodie and patterned gloves, reaching into a bush of green plants with small red berries. The man, on the right, has a beard and is wearing a dark t-shirt with a 'UNITED STATES SPACE FORCE' logo and blue gloves, also reaching into the same bush. In the background, there are more plants and a wire mesh structure, possibly a greenhouse or trellis. The sun is shining brightly, creating a warm, golden light.

Bright Beginnings

Voices of Israel

Welcome
Turtle Creek Chorale!

K-pop Purim

From Strength to Strength

Temple Emanu-El announced in November that Rabbis David Stern and Debra Robbins will retire within the next two years. This moment marks a significant, historic transition as we honor the legacies of our beloved rabbis and anticipate new leadership. This issue of The Window introduces a new section, Future, which will provide updates about the rabbinic searches, farewells, celebrations and welcomes, as well as spotlight the enduring strength of Temple Emanu-El.

Congregational Conversations to Begin in January

Temple is beginning a series of conversations called Sharing Our Strengths, which will take place from January through May.

"I am pleased to announce that two exceptional Temple leaders, Barry Greenberg and Jennifer Nocerini, have agreed to chair this project, which is essential to ensure that the voice of this community guides the most important decisions ahead," says President Sara Albert.

"Jennifer is a member of the Board of Trustees and Barry is a longtime former officer of Temple. Their leadership and insights will be invaluable to the process ahead," Sara says.

A steering committee is being formed and small-group conversations are being planned among a broad range of congregants based on demographics and levels of engagement at Temple.

Both Sharing Our Strengths chairs are pleased and excited to take on this project.

"We are at a pivotal moment in Temple history," says Jennifer. "The responsibility to define who we are as a collective to inform the search for a new leader is an honor. As a Dallas transplant

and Jew by choice, I don't have the roots of multigenerational Temple members. However, I found my home in this community and hope to adequately reflect the heart of who we are and what we want to be."

Barry echoes Jennifer's sentiments: "I was honored to be asked to participate in this vital project to help lead a series of community conversations," he says. "We hope to gauge the pulse of our members regarding our core values and to help frame the job description for our new senior rabbi. I look forward to hearing from our congregants on the issues and qualities that matter most to them and to help provide guidance as we search for our next leader."

Please watch Temple communications in the coming months for opportunities to share your voice.

For questions, contact:

Meredith J. Fried Fedyk, Executive Director: mfried@tedallas.org
Sara M. Albert, President: sara.albert55@gmail.com



Barry Greenberg



Jennifer Nocerini

Perspective and Possibility

REFLECTIONS ON THE JOURNEY TO ISRAEL



Rabbi David Stern

At Yad L’Kashish, (“Lifeline for the Old”), hundreds of Jerusalem’s needy elderly come together to make art, find purpose and community, and receive wraparound social services. Jewish immigrants from Ethiopia, Ukraine and Argentina make everything from challah covers to baby blankets to candlesticks and papier-mâché iPhone stands, all for sale in the gift shop. When

the director of public relations brought our Temple group through the cramped and busy workshops in December, the artisans shooed her away so they could get back to work.

One of the hottest items in the gift shop this year is a ceramic pomegranate, with the bottom painted in solid colors and the top in polka dots. Why? Because some of the center’s clients may have the ability to manage solid colors, but not the hand-eye coordination to do the more delicate work of the finely painted polka dots. Each pomegranate represents a range of skills, and the center’s genius for inclusion.

We have been bringing Temple groups to Yad L’Kashish for almost 40 years, each time different, and this time especially so, as Israel still moves in the long shadow of October 7, 2023. Our itinerary was shadowed too: we met with a resident of Kibbutz Kfar Aza, as she described to us the murder of people she loved. We met with a survivor of the Nova festival, and the Bedouin farmer who saved his life and the lives of seven others by hiding them when Hamas came to the gates of the farm.

We saw memorial stickers everywhere, and heard people longing for the return of the last hostage still in captivity. We met with a Palestinian bookshop owner in East Jerusalem to hear insights that agitated and enlightened us, and spent an inspiring morning at Niv Nirel, a trauma recovery retreat center that has a special relationship to our Temple community. At Shabbat dinner, I soaked in a vehement argument between two Israeli friends who completely disagree with each other about the political situation, and about Israel’s responsibility for the suffering in Gaza.

Every trip to Israel is a humbling reminder not to generalize. While societies have their trends, we learned time and again not to say, “Israelis think,” “Palestinians think,” “military experts think.” The survivor of Kibbutz Kfar Aza told us that “the experience of a kibbutz fighter on one side of my yard was different from the experience of the kibbutz fighter on the other side.” Chaos does not yield clear perspectives, as much as we may seek them.

And so to the pomegranates. We are each experiencing the ongoing trauma of October 7 in our own ways. Some moments bring solid colors—a unified field of purpose or perspective. Others bring the mosaic pointillism of the polka dots—brokenness, playfulness, contradiction, fragmentation, buoyant hope. We were in Israel during the Torah portion of Jacob’s wrestling with the angel, and we did plenty of wrestling too: with questions of moral responsibility, of human evil, of seemingly intractable complexities, of shadow and hope.

But most of all, we came away with a sense of the possibilities of resilience: in how Israeli citizens have stepped up to help each other where the government has failed: in the courage of the Reform movement to stand for justice in Israeli society, in Israeli and Palestinian parents’ deep and common desire to protect their children from violence.

At our visit to the Nova memorial site, after they told their story, the Jewish Israeli and the Bedouin who saved him embraced—a shining beam of humanity and heart on the fields of bloodshed. And at Yad L’Kashish, because the workshop day ends before sundown, they do their communal lighting of the Hanukkah menorah each morning. It’s a practical solution, and a good reminder that light sometimes comes when we least expect it.

This month and next, we at Temple will host two outstanding scholars-in-residence who will bring us perspectives on Israel today: Aya Margalit, Temple’s *sh’lichah*, (p. 12) and Rabbi Dalia Marx (p. 9). Together with them, may we find some light on the path ahead.

CONTENTS

FUTURE

From Strength to Strength

2



ISRAEL

Lefkowitz Memorial Lecture
with Aya Margalit
Scenes from Israel Trip

12

14

SOCIAL JUSTICE

Yom Tzedek: A Day
of Action and Commitment 24
Noya's Bears Returns 25
Martin Luther King Day Family Guide 26

PRAYER AND SPIRITUALITY

A Message from Rabbi David Stern 3
Editor's Note 5
Music, Arts and Culture presents
Sea Crossings 6
Daytime Lunch-and-Learn Classes
with Clergy 8
Tu BiSh'vat at Temple 8

COMMUNITY

Leadership in Action 15
K-pop Purim 2026 17
Celebration and Remembrance 18
Planting Seeds: Spiritual and
Emotional Well-being Workshop 21
Goin' to the Chuppah 21
Tributes 22



LEARNING

Scholar-in-Residence
Rabbi Dalia Marx 9
What's Happening? Teen Youth Group 11
ECEC Auction Open for Sponsors 11



About the Cover: Eli and Aaron Zarbo harvest peppers in the Jill Stone Community Garden at Temple. The garden welcomes volunteers every Wednesday and Sunday, and all produce supports the Vickery Meadow Food Pantry. For more information, contact: Erica Matsil, ematsil@tedallas.org



Temple
Emanu-El

Founded in 1872
8500 Hillcrest Road | Dallas, Texas 75225
214.706.0000 | tedallas.org

Temple President
Sara M. Albert
Executive Director
Meredith J. Fried Fedyk

Clergy
Rabbi David E. Stern
Rabbi Debra J. Robbins
Cantor Vicky Glikin
Rabbi Amy Rossel
Rabbi Kimberly Herzog Cohen
Cantor Leslie Niren
Rabbi Michael Lewis

Department of
Congregational Advancement
Sandy Diamond, Senior Director

The Window
Connie Dufner, Senior Director
of Communications
Ann Wilson, graphic designer
Thomas Booe, writer
Anjelica Ruiz, writer
Livia Stevenson, writer



A New Trip Around the Sun

Let's open the secular new year with a bit of wordplay, shamelessly borrowed from the Bard himself.

That which we call a semiquincentennial by any other name is...a sestercentennial, bisesquicentennial, quarter millennium, or simply, America250.

Our Jewish stories and our American stories, our national milestone and our congregational milestones—all are part of the collective Jewish journey that we'll embark on together in our country's 250th year.

In November, Temple shared the news of the paths to retirement for our beloved Rabbis David Stern and Debra Robbins, in 2027 and 2028, respectively. As we begin the secular new year, we'll start the work of preparing for the significant transition ahead. Look for a new section in The Window called Future, where we'll be sharing news about From Strength to Strength, the season of celebrations, farewells and welcomes ahead. Later this month, we'll start the Sharing Our Strength project to take the pulse of the congregation on what members want for our future (p. 2).

The Jewish and American stories have been intertwined since the nation's early days, and an especially resonant moment occurred during the 1960s, when Reform Jewish leaders contributed to the drafting of the Civil Rights Act of 1964 and the Voting Rights act of 1965. (The Religious Action Center of Reform Judaism in Washington, D.C. served as a hub for drafting this legislation.) Rabbi Abraham Joshua Heschel famously marched with Martin Luther King, Jr. in Selma, Alabama. That legacy has informed decades of social justice practice at Temple Emanu-El. And on April 12, we as a congregation will recommit to our core social justice essence in Yom Tzedek: A Day of Action and Commitment (p. 24).

Learning for all is a touchstone of our democracy, and one of Temple's core values. We are so excited to welcome two Israeli scholars-in-residence: Aya Margalit, Temple's *sh'lichah* or Israel ambassador; and Rabbi Dalia Marx, professor of liturgy and midrash at the Jerusalem campus of Hebrew Union College. Their insights will open new doors to understanding the richness, traditions and complexities of Israel today. Read our interviews with our guests and take note of the deeds (pp. 9-10 and 11-12).

Fresh off the feels of the Nefesh Mountain weekend and the festive Hanukkah concerts with our cantors and choirs comes Sea Crossings: A Shabbat Shirah Prayer Journey with Turtle Creek Chorale. This very special appearance marks the Chorale's first time participating in a worship service. Learn about why the organization replied an emphatic "yes" to Temple's invitation in the interview with artistic director Sean Baugh (p. 6). Shabbat Shirah marks a pivotal moment in the Torah, as the Israelites sang triumphantly after crossing the Red Sea. As we embark on the season from winter to spring, from our personal enslavements to expansiveness and freedom, may we be nurtured and supported by our community and our faith every step of the way.



‘A Healing Adventure’

TURTLE CREEK CHORALE JOINS THE TEMPLE EMANU-EL CHOIR
IN A MUSICAL TRIBUTE TO FINDING FREEDOM AND HOPE IN DIFFICULT TIMES



Sean Baugh recalls a personal sea crossing that occurred last year during a concert performance at Broadway Baptist Church in Fort Worth.

“On a whim, I turned around and asked for a show of hands of everyone who has been hurt by the church. Almost every hand went up,” says Baugh, artistic director and conductor of the Turtle Creek Chorale, a predominantly gay male chorus.

“The majority of our singers, ages 40-70, grew up in a time where many of us sang in church choirs, hearing what we like to call clobber passages from the Bible used against us. But they still gave their gifts freely to churches that would turn their backs on them. I view it as part of our mission to reclaim some of that musical authority that has been used against us,” Baugh says.

So it was an enthusiastic and emphatic “yes” when Temple approached Baugh to invite the Chorale to sing with our choir. Not only did he know Temple’s reputation as a top-notch music program, but he also respected choir director Chris Crook for many years.

“I’ve always admired the way Temple Emanu-El has been able to push a progressive theology, and do so with authority and confidence,” he says. “Just by being invited to perform at Temple Emanu-El, that is an invitation that says we value you as a human—not just the gifts you bring, but your full, authentic selves.”

Cantor Vicky Glikin affirms Baugh's sentiments. "The partners we choose for Temple's artistic endeavors speak volumes about our values. When we were planning the 2025-2026 Music, Arts and Culture season a year ago, we knew that a collaboration with the Turtle Creek Chorale is an opportunity for us to support our LGBTQIA+ friends, congregants and neighbors in an especially polarizing climate. Sea Crossings felt like a fitting theme for us as Jews not only on Shabbat Shirah, but also as a community and a nation."

The two choirs will sing the Shabbat Shirah Prayer Journey on January 30 at 6PM. Shabbat Shirah is the name of the Torah portion B'shalach, which includes the "Song of the Sea" sung by the Israelites after they crossed the Red Sea. It is customary for synagogues to observe this Shabbat with special musical programming.

"While the things we sing aren't water and sea-based, there's a similar thread of coming out of the storm and finding a place after difficulty. I think it's a great fit," Baugh says.

This occasion will mark the third time the Turtle Creek Chorale, with more than 250 members, including three Jewish members, has sung in a synagogue, and the first time they have been included in a worship service. "This will be a healing adventure for them, and will open up some dialogue between our two institutions," Baugh says.

The musical portion of the service will be about 45 minutes and will include selections by Temple's choir. The works encompass spiritual and peace-oriented themes and represent underrepresented composers, including women, people of color, Jews and those in the LGBTQ community.

"I'm very curious and very excited to see how it feels in the room. I look forward to being moved by a service that's not in my tradition," Baugh says.



SEA Crossings

A SHABBAT SHIRAH PRAYER CONCERT
WITH TEMPLE EMANU-EL CHOIR &
TURTLE CREEK CHORALE

FRIDAY
JANUARY 30, 2026 | 6PM

SHABBAT EVENING SERVICE
EXPANDED ONEG TO FOLLOW
REGISTER: [TEDALLAS.ORG/EVENTS](https://tedallas.org/events)

MAC
MUSIC | ARTS | CULTURE

Sponsored in part by
Beverly Goldman Charitable Fund

About the January 30 Service | 6PM | Olan Sanctuary

The Shabbat evening service on Jan. 30 will follow a different format than most Friday night services. It will open with traditional liturgy, then will move into the Shabbat Shirah prayer journey with the Turtle Creek Chorale and the Temple Emanu-El Choir. The Kaddish will be recited at the end of the service, following the presentation by the two choirs.



TIME FOR JOY

Get happy at All-In Shabbat on Feb. 20 as we celebrate Adar, described by the Talmud as the month in which joy increases. (Cue Purim, which arrives two weeks later!) Spend a soul and spirit-pleasing evening with us as we bring in Shabbat in art, song, story, prayer and food.

5PM: Chavayah, the pre-service experience, plus activities exploring the theme of joy

6PM: A lively, joyful Shabbat service for all ages, followed by a congregational dinner

Register: tedallas.org/events

Food for Thought

Enjoy daytime classes in two new lunch-and-learns

Ani L'Dodi: A Love Song through the Generations

With Rabbi Kimberly Herzog Cohen

February 25, March 4, March 11 | 12-1:30PM | Linz Hall | in person only



As winter turns to spring, we are pleased to present this in-depth exploration of Song of Songs, the Bible verse traditionally read during the Passover season. Participants will delve into the layered meanings and adaptations of this ancient love poem, complete with musical

renditions and modern interpretations. We will also engage in a writing project that will bring this text alive in creative, new ways.

Register: tedallas.org/events

Dialogue, Memory and the Presence of God

With Rabbi Seymour Rossel

January 29, February 5, 12 | 12-1:30PM | Linz Hall | in person only



What does it mean to feel God's presence—not just in ancient texts, but in conversation, memory and everyday life? In this new class taught by Rabbi Seymour Rossel, Temple member and Chever Torah teacher, we'll explore how dialogue opens us to the Divine,

how remembering connects us to sacred time, and how the Bible's idea of God's presence still speaks today. Drawing from Jewish thought, modern philosophy and timeless stories, these sessions are for anyone who wonders where—and how—we can sense God in our lives.

Register: tedallas.org/events



The New Year of the Trees arrives February 2

Celebrate Tu BiSh'vat with study and family fun

January 31 | 9AM | Chever Torah

Rabbi Debra Robbins will lead a Tu BiSh'vat-themed session and explore texts related to trees, planting and Israel.

February 1 | 1PM | Family Scavenger Hunt

Team up with your family for a fun and fast-paced photo scavenger hunt! Celebrate the birthday of the trees as you explore the beauty of nature around Temple's campus.

Register: tedallas.org/events



Experience the Beit Midrash with Israeli Scholar Dalia Marx

By Anjelica Ruiz



Temple Emanu-El will welcome Rabbi Dalia Marx as a scholar-in-residence on Feb. 6-7, as she takes us into her own *beit midrash*, a space where liturgy, gender, ritual and the Jewish calendar all meet.

Rabbi Marx is the Rabbi Aaron D. Panken Professor of Liturgy at Hebrew Union College-Jewish Institute of Religion in Jerusalem. In this conversation, she reflects on the perspectives she brings as a Reform leader in Israel and how prayer, commandedness and community shape Jewish life today.

Q: Your upcoming visit is framed around the idea of a *beit midrash*. What does that mean to you?

A: This is actually the first time I've been invited to frame an entire residency around my own *beit midrash*, instead of being assigned a single theme like the High Holy Days or Passover. Your clergy said, "Show us a little of everything you do."

My academic field is Jewish liturgy, but I also work extensively on gender in Judaism and the Jewish calendar. My most recent book explores the festivals through time. So the idea became a sort of smorgasbord: a taste of liturgy, gender, ritual and spiritual life. That's the heart of my *beit midrash*.

Q: Temple members are eager to learn from someone rooted in Israel during this moment in history. What perspectives do you hope to bring as a voice from Israel?

A: I hope to share the cultural and spiritual aspects of life in Israel, less the politics themselves and more what emerges through the politics. My work with the Israeli Reform movement centers on peace, reconciliation, gender justice and ethnic justice as expressed through liturgy, ritual and worship.

Q: Your Friday night sermon will explore the question, "Am I really commanded by God to do this?" How do you understand commandedness in a modern Reform context?

A: Commandedness is central to Judaism. While Reform Judaism once emphasized ethical mitzvot over ritual ones, what really matters is not how many mitzvot we observe, but whether we see ourselves as commanded, whether by God, our conscience, our community or our moral values. Being a Reform Jew is not being a "lesser Jew"; it's about asking how we sanctify time, make Shabbat meaningful and pursue holiness. These questions shape our families, our communities, and our people and even national decisions, like the commitment to return the captives, reflect profound Jewish values that function as commandments in their own right.

Q: Your Shabbat morning session, *L'hitpalel: Prayer Is Dynamic*, will focus on new liturgy written since October 7. What prayer responses from this period have moved you most?

A: Everyone wrote prayers—secular people, atheists, people who don't believe in God at all but still felt compelled to create liturgy. This is new for Israel.

Hundreds of prayers emerged in the first weeks alone: petitions, confessions, poems, new *piyyutim*. Some sounded militaristic, some mournful, some focused on hope. Even the new versions of the Kaddish were incredibly diverse.

Creating new liturgy means pouring contemporary experience into ancient vessels, and what appeared was rich, nuanced and profoundly human.

Continued on next page

Continued from previous page

Q: How do you encourage students and communities to write or adapt prayers that feel authentic yet speak to contemporary realities?

A: I actually recommend recycling and reusing older prayers rather than inventing from scratch. There is tremendous wisdom and emotional weight in prayers our ancestors used in their own moments of crisis. Reworking them creates continuity and gives their words new life.

That said, my Israeli and American students are wonderfully creative. I always encourage them to write, but with awareness of the powerful tradition they're stepping into.

Q: Your Lunch-and-Learn session is titled Women's Religiosity in Antiquity (and Now): Not What You Think. Can you offer a small preview?

A: I was part of the feminist Babylonian Talmud commentary project, where each scholar analyzed a tractate to explore women's voices and portrayals of femininity. To my surprise, I received tractates dealing with the Temple. Even more surprising was that the separation between men and women and the exclusion of women was not nearly as

dramatic as what we see in some Jewish spaces today. While it was not egalitarian in the way Temple Emanu-El is, the rabbis showed real interest in women's religious experiences, their desire to pray, and their longing to be close to holiness. There are some unexpected insights there, and that's what I want to explore together.

Q: You've written extensively about prayer, ritual and the Jewish calendar. What areas of Jewish practice are you exploring right now?

A: I'm writing a new introduction to Jewish prayer. The classic text we all studied is more than 125 years old, updated, yes, but still rooted in an older era. Liturgy evolves, theology shifts, and our understanding of prayer expands. This new volume will reflect that evolution.

Q: Finally, what do you hope our congregants will take away from spending a weekend in your *beit midrash*?

A: I want people to remember how rich, profound, creative and vivid our Jewish heritage is and how much power it gives us to make the world better through a Jewish lens.

The Beit Midrash of Rabbi Dalia Marx

Friday, February 6

Shabbat Evening Service | 6:15PM
Ritual: "Am I really commanded by God to do it?"

Saturday, February 7

Shabbat Morning Service | 10:30AM
Liturgy: L'hitpalel: Prayer is Dynamic—Creating Prayers Since October 7

Lunch and Learn

12:45-2PM

Gender: Women's Religiosity in Antiquity and Now—It's NOT What You Think!

Register: tedallas.org/events

I also want them to feel the importance of *kehillah*, not only the local congregation, but the global Jewish community. Strengthening relationships between communities, Israeli, North American and beyond, is essential.

When people tell me afterward that something they learned opened their appetite to study more, that is the greatest success. My syllabi always end with the same instruction, in Aramaic, *zil gmor*, "now go and study." If the weekend inspires that hunger, then we've done something meaningful together.



WHERE CURIOSITY MEETS JOY ECEC Applications Open January 13

Applications for the 2026–2027 school year of the Early Childhood Education Center open for Temple members on January 13 at 7AM.

From infants through kindergarten, children thrive in a joyful, inclusive, Jewishly-rooted community. With hands-on projects, nature discovery, STEM, art, music, yoga, farm-to-table activities and more, every day is full of exploration, creativity and growth.

Accredited by International Baccalaureate and the National Association for the Education of Young Children

Learn more: tedallas.org/ecec

How Goes? Temple Teens Get Going

By Livia Stevenson

The Temple Youth Group is off to a strong start this fall. The teen board began the year with an August retreat to set goals, generate ideas and shape vision for the group.

In October, teens gathered for a spirited “Challah-ween” celebration featuring food, games, football and challah making—a fun first taste of what this new community can be.

Next up: a January movie screening as the group continues building connection and momentum.

Want to learn more or get involved?
Contact: scjl@tedallas.org



ECEC AUCTION TO BE HELD JANUARY 31

Help support our Early Childhood Education Center by becoming a sponsor at the annual auction. All proceeds raised will be used to invest in the professional development of our educators and staff, with opportunities such as study tours and learning from guest educators. When we support our educators and staff, we strengthen the entire school community!

If you are interested in becoming a sponsor, please scan the QR code at left. We appreciate your support!



2026 RABBI DAVID LEFKOWITZ MEMORIAL LECTURE

Loving Israel Right Now

A Weekend of Conversation and Connection with Aya Margalit

By Anjelica Ruiz



Aya Margalit, our community *sh'lichah*, or Israel ambassador, will be leading the 2026 Rabbi David Lefkowitz Memorial Lecture for a weekend of learning and reflection on January 9-11. She will share from her heart her journey as a *sh'lichah*, as well as a deep commitment to helping us imagine what connection to Israel can look like today.

"I'm going to talk about Israeli society these days," she explains, "and what's happening now and how that connects to Jews around the world."

Redefining Her Voice

Before she arrived in Dallas as Temple's *sh'lichah*, Aya says she had a clear sense of what she imagined the role to be. "I want people to have a face, a name, a family that they can think of when they hear about Israel in the news or on social media," she told *The Window* in the July/August 2023 edition. "Israel is the most incredible nation of people who care unconditionally. The people truly are what makes the place and I hope to be able to bring a little bit of our love of Israel to Dallas."

But after October 7, 2023, everything shifted.

"It allowed me to bring a very authentic voice," she reflects. "It allowed me to bring a very painful and true story...to people who might otherwise experience it at a distance."

Her presence, along with her family's, also narrowed the degrees of separation for many congregants. Their faces, their stories and their grief made Israel feel less abstract and more human.

"For me personally, I had to redefine what it means to be a *sh'lichah*," she says. "Is my voice going to be only October 7? Because Israel is not and cannot only be October 7. Israel is a land with a 77-year history and a Jewish story thousands of years old."

Trauma, Aya says, cannot be the defining narrative.

"Connections, people, experiences, dreams, hopes, education and collaboration, that's what needs to be the pillars of our definition of who we are."

A Weekend of Conversations

Aya will bring the many voices and perspectives of Israel to the congregation, beginning with her Shabbat evening sermon. The Saturday lunch-and-learn will remain intentionally open-ended to invite questions and dialogue. Also joining Aya on Saturday will be Rabbi Nir Barkin, a friend of Temple and Senior Rabbi and Executive Director of Kehillat YOZMA Modi'in of Israel. Rabbi Barkin will also deliver a d'var Torah at the January 10 Shabbat morning service.

During the parent education session on Sunday, Aya hopes to help families navigate how to talk with children about Israel in ways that cultivate trust, understanding and shared values.

"How do you bring the conversation back if it's stopped?" she asks. "How do you start it if it hasn't begun?" These are challenges that reflect the wider complexities and tensions many American Jews feel. Still, Aya believes firmly that conversation will solve problems. Silence, she says, will not.

Cultivating a meaningful relationship with Israel, she notes, begins long before a child understands history or politics. “When we read stories to our kids,” she explains, “it’s not just about linguistics. It’s about giving them tools to cope with life.”

Israel, like Judaism, offers children a language of identity, belonging, values and curiosity. “There is so much beauty in Judaism, and so much beauty in Israel as the land of the Jewish people,” she says. “We can give them hope, identity, happiness and the ability to ask questions, to understand that grown-ups make mistakes and that we evolve.”

Curiosity and Hope

Aya hopes the congregation approaches the weekend with curiosity rather than certainty. “I hope people will come with questions, not answers,” she says.

“Judaism has endured because we questioned, challenged and stayed in relationship,” she explains. “Shutting down is simply not who we are.”

She also hopes the weekend brings moments of hope. “Yes, it’s a dark time,” she acknowledges, “but there is a lot of hope seeping in through the cracks, if we are open enough to see it.” She sees that hope daily, in Israelis supporting one another and in the generosity of American Jews. Closer to home, she notes how Temple Emanu-El has supported her in several projects that show love and care for Israel, including Hanukkah gift boxes, participation in the Noya’s Bears project for children, clothing drives and more. “We come together. We lift one another up. We stay together.”

Ultimately, her message is about relationships and responsibility. “To love Israel right now is to love it although it hurts,” she says. What is important is that we stay engaged.

“Keep the conversation going. That’s what matters most.”

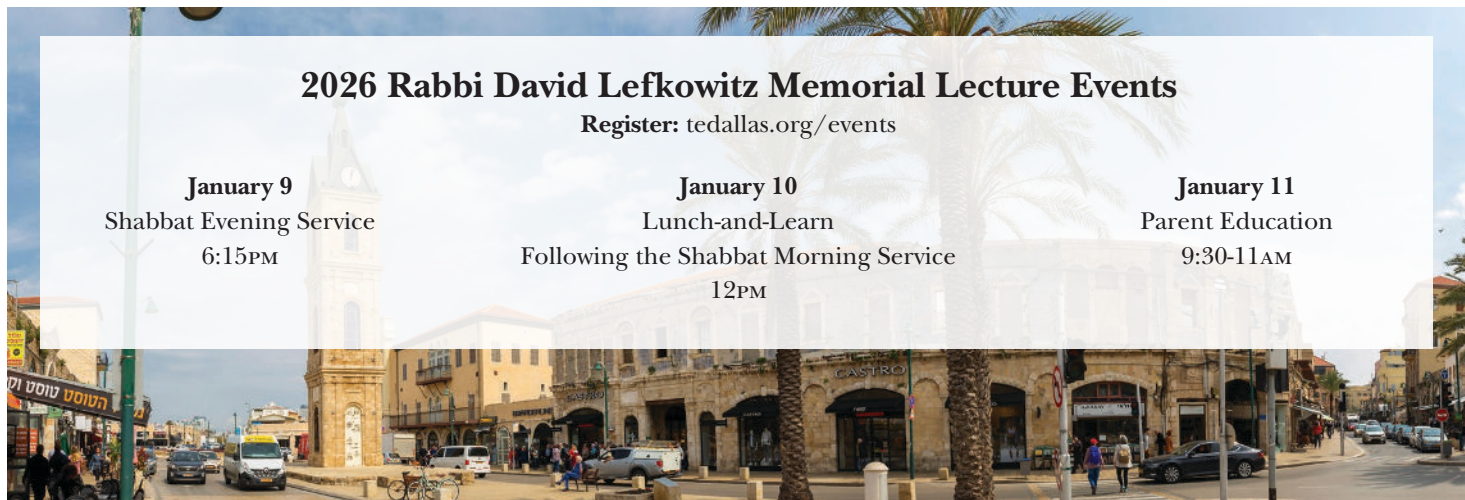
2026 Rabbi David Lefkowitz Memorial Lecture Events

Register: tedallas.org/events

January 9
Shabbat Evening Service
6:15PM

January 10
Lunch-and-Learn
Following the Shabbat Morning Service
12PM

January 11
Parent Education
9:30-11AM



Witnesses to Heartbreak and Hope

The 21 congregants who traveled to Israel with Rabbi David Stern and Rabbi Amy Rossel were both challenged and inspired by what they saw and experienced. The trip began with framing of the Israel story since October 7, 2023. As the week went on, our community immersed itself in vibrant Israeli culture, met with changemakers and deepened relationships among themselves and with Israel. Scan the QR code to hear reflections from Rabbi Stern on the trip.



Leadership in Action

A year ago, Temple members unanimously approved a new set of bylaws and began to bring to fruition a new system of governance.

The new document replaced a set of bylaws enacted in 1974, with few modifications since. The main changes are:

- A smaller Board of Trustees, allowing for more dynamic discussion and greater efficiency in decision making
- Creation of a new Leadership Council to advise on significant Temple matters
- Creation of a new Nominating and Governance Committee, to allow for stronger leadership development

The Window checked in with several members of all three leadership groups about how the new changes have been unfolding since going into effect on June 1. Each of the leaders expressed satisfaction with the outcomes so far, and looked forward to continuing to serve in the new structure.

“It has been very energizing to see the new bylaws come to life,” says President Sara Albert. “After 18 months of research and learning, and then a complete re-writing of our core governance document, it was a thrilling rebirth of a new model that both builds on the strengths of the past and re-imagines what governing at Temple can be.”

Leadership Council



We’ve gotten lots of positive feedback from Leadership Council members, and Temple lay leaders, staff, and clergy want to bring their ideas and initiatives before the Council to inform, to solicit feedback, and to help further whatever it is they are working on. The Leadership Council has quickly become a highly respected and sought-after group at Temple.

—Julie Weinberg, Chair, Leadership Council



It has been so gratifying to see how quickly—and how frequently—the value of having this strong and diverse group of engaged voices is reinforced. When there is a new initiative being planned at Temple or a big change being proposed, leaders across Temple are saying “Let’s take it to the Leadership Council first!”

—Sara M. Albert, President

Participation of Past Presidents

The past presidents have shown up in a big way. Their collective and individual wisdom and experience adds so much to any conversation, and they bring valuable perspective to the group. The historical knowledge and institutional memory of the past presidents is something I hope to more intentionally draw on in future Leadership Council meetings.

—J.W.

Size of the Board of Trustees

We went from a board of 68 Trustees last year to a board of 21. The discussion dynamics of this small, highly engaged and well-prepared group has provided a platform for very effective and efficient decision making.

—S.A.



I can participate in discussions in a more meaningful way. Because there are fewer people, we can sit in a way that allows us to face one another. The eye contact and non-verbal feedback are more reassuring when having difficult conversations.

—Erin Zopolsky, Trustee



An important piece is that, like was previously the case with the Executive Committee, pros and cons of issues can be fleshed out. The board is large enough that there are multiple viewpoints but small enough that those can be effectively debated.

—Robert Elkin, Trustee

Effectiveness of Decision-Making



Under the new bylaws, the dynamic is completely different. The Board feels more engaged, collaborative and focused on meaningful dialogue rather than just listening to reports. It's also helped us build stronger relationships among Board members—we know each other better, which makes discussions more productive and respectful.

– Eric Goldberg, Trustee

Oversight of Temple Committees

I've enjoyed service on both types of boards, but with the changes, I feel that my role and objectives are more clearly defined. Thus, my participation feels more meaningful.

–E.Z.

We've become a true working Board. Each member now has direct involvement in specific areas of Temple life, which gives us a vested interest and a deeper understanding of what's happening across the congregation. Personally, I feel much more connected and accountable because I'm actively engaged in areas that matter to our community.

– E.G.

Nominating and Governance Committee



We have started plans for an exciting new leadership development program, to launch in 2026. We are working to streamline and improve Temple's committee structure by assisting the committees to develop charters, providing guidance regarding committee membership and leadership and improving the processes for our members

to become involved. And of course, as our core function, we will soon begin the process of soliciting nominations for open Board and Leadership Council seats.

–Linda Wimberly, Chair

The best changes are committee charters, creating focus on the mission, term limits and objectives to have both continuity and turnover; defining the distinction between governance and program committees, and thinking about a deliberate process to sunset if and when appropriate.

–R.E.

We are learning that we have many different kinds of working groups at Temple (committees, teams, advisory groups, or steering committees) and there is a wide range of needs for Board oversight. Our Nominating and Governance Committee is studying the best way to make sure that all groups at Temple have the kind of connection and access to the Board that makes sense for them.

–S.A.

LEADERSHIP COUNCIL AT A GLANCE

43 Members of the Leadership Council

- 14 were members of the 2024-2025 Board of Trustees
- 16 were selected through a nomination process
- 13 are past presidents who serve as lifetime members

Demographic Groups

- Past presidents
- Former Board of Trustees members
- Early Childhood Education Center Parents Association
- Brotherhood
- Women of Reform Judaism
- Older Adults
- Nominating and Governance Committee
- Clergy Search committees
- Sh'ma Emanu-El
- Social Justice committees
- Finance Committee
- Annual Fund Committee

Age range

- 27 to 87

Years of Temple Membership

- 2 to 55 years



KPOP PURIM 2025



Get ready for rhythm, storytelling, joy and celebration for every age at this year's Purim festivities, from our K-pop Haman Hunters family spiel and carnival to our retro-inspired Soda Pop Purim adult party.

By Livia Stevenson

◆ K-pop Haman Hunters Spiel and Carnival ◆

Sunday, March 1 | 10AM-12:30PM

Families with children of all ages are invited to celebrate Purim with costumes, music and carnival fun. The morning begins with our K-pop Haman Hunters spiel, an energetic retelling of the Purim story filled with surprises.

From 10-11:15AM, children up to age 5 can enjoy Tot Time at the carnival, complete with age-appropriate inflatables, crafts and activities. At the same time, older children and families are invited to enjoy this year's dynamic K-pop-inspired spiel.

Following the spiel, the celebration continues as the carnival opens for all ages with inflatables, games, carnival lunch and dessert food trucks.

◆ Soda Pop Purim: Adult Party & Spiel ◆

Monday, March 2

Happy Half Hour | 5:30PM

Spiel & Megillah Reading | 6PM

Dinner & Dancing | 7PM

This year's adult Purim celebration brings together the vibrant world of the movie K-pop Demon Hunters and the nostalgic charm of a 1950s soda shop for a night of lively fun. Costumes encouraged: K-pop idols, retro rock-and-roll, demon hunters or anything that sparks your Purim joy.

In partnership with ATiD, Women of Reform Judaism and Brotherhood, the evening begins with a festive Happy Half Hour, followed by a spirited spiel and Megillah reading. Then the celebration shifts into high gear with a diner-style dinner, dancing and plenty of good old-fashioned fun.

Register for all events: tedallas.org/events

Celebration & Remembrance

Compiled by Thomas Booe

BECOMING B'NAI MITZVAH



Alais Fontaine
November 8
Daughter of Laura and
Chris Fontaine
Greenhill School
Tikkun Olam: Vickery
Meadow Food Pantry



Aubrey Goodman
December 20
Son of Anna
Miller-Goodman and
Andrew Goodman
Richardson West Junior
High School



Ava Sobel Blum
January 10
Daughter of Elizabeth Sobel
Blum and Stephen Blum
Parish Episcopal School
Tikkun Olam: Food
insecurity



Seth Mendel Lowenberg
January 10
Son of Sonia and
Anthony Lowenberg
St. Mark's School of Texas
Tikkun Olam: Jill Stone
Community Garden



Katheryn Skibell
January 17
Daughter of Ashley and
Jeff Skibell
Parish Episcopal School
Tikkun Olam: Family
Gateway



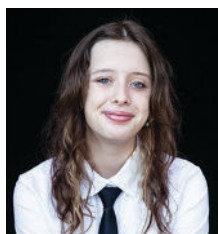
Frank Zidell
January 24
Son of Meridith and
Jeremy Zidell
Shelton School



Katharine Martel
February 7
Daughter of Nicola Hudson
and Arie Martel
Alcuin School
Tikkun Olam: Dallas Animal
Services



Jonathan Roberts Pomper
February 7
Son of Jennifer Coughlin
and Martin Pomper
St. Mark's School of Texas
Tikkun Olam: Dallas
Holocaust and Human
Rights Museum



Sid Shanks
February 7
Daughter of Tracy and
Richard Shanks
Lakehill Preparatory School
Tikkun Olam: White Rock
Center of Hope



Aiden Renee Pinkus
February 14
Daughter of Rebecca and
Brett Pinkus
Travis TAG Middle School
Tikkun Olam: Feed My
Starving Children;
Dickinson Place



Brady Austin Bernknopf
February 21
Son of Misty and Brian
Bernknopf
Parish Episcopal School
Tikkun Olam: Dallas
Holocaust and Human
Rights Museum

Not Pictured
Nelson Radunsky
February 12
Son of Kelsey and
Alex Radunsky
Alcuin School

Paige Ryan Weller
February 28
Daughter of Kelly and
Barry Weller
J.L. Long Middle School
Tikkun Olam: Fostering
dogs



Bradley Ramo
February 21
Son of Stacie and
Brandon Ramo
Highland Park Middle
School
Tikkun Olam: Feed My
Starving Children



Ethan Ramo
February 21
Son of Stacie and
Brandon Ramo
Highland Park Middle
School
Tikkun Olam: Feed My
Starving Children

NEW AND RETURNING MEMBERS

Jackie, Rose and Naomi Altman
Christina Lee and Dan Barish
Natalie Cohen, Ross and Asher Parket
Becca, Yoni and Levi Degani
Allison, Jacob, Lindsay and Jane Feinstein
Julie, Eric and Eleanor Fried
Ben Gordon
Margaret, Jacob and Margot Hagar

Susan and Maury Jaffer
Janice Leventhal
Dana Lipp and Hunter Birnbaum
Marina Santos Oren, Asher, Noah, Zoey,
Luna and Liam Oren
Brandon Palanker
Michael, Clifford and Jonathan Pershes
Lisa, Armand, Asher and Ivy Sadoughi

Spencer Sandfield
Rebecca Stone, Greg, Piper and Richard Kostka
Janel Wilson, Sherrod and Savannah Dickson
Linoy Yacov and Gianna Martin-Duarte
Hollye Zidell

BABY NAMINGS



Abel Jacob Chernoff
Son of Adrienne Feltman & Adam Chernoff
Brother of Ava and Annie Chernoff
Grandson of Arlene & Allen Feltman



Mia Willow Margaretten
Daughter of Delaney and Tyler Margaretten



Nora Cooper Rubinett
Daughter of Jackie and Andrew Rubinett
Granddaughter of Arlene and Mike Glazer
Great-granddaughter of Margie Glazer



Shelly Stelzer
Daughter of Gil Stelzer



Lewis Rex Wedgeworth
Son of Robyn and Travis Wedgeworth
Grandson of Joan Becker

Not Pictured
Zoe Cohen Sasson
Daughter of Nir Cohen Sasson

CONVERSION



Jacie Lurie

WEDDING



Audrey Dittmar and Joe Cheniae
Son of Karen Cheniae and Chris Cheniae

IN MEMORIAM

Betsy Kamins Atlas

Mother of Cindy Ely

Roe Bovos

Mother of Marsha Deitchma

Anabel Stein Cassel

Rosalee Cohen

Mother of Lori Droppo,
Cynthia Timm and Donald
Cohen

Solomon Gelgor

Father of Karen "Kay" Stoel

Judith Fried

Wife of Herb Fried
Mother of Meredith J. Fried
Fedyk and Emily Basser
Sister of Gail Chotiner

Shirley Kochman

Joan LaGrasse

Mother of Leila "Lee"
Nichols
Grandmother of Cooper
Nichols and Dinsmore
Nichols

Brad Andrew Lipshy

Son of Esther Ritz and Bruce
Lipshy
Brother of Marc Lipshy and
Jennifer Lipshy Karpeles
Father of Sarah Lipshy,
Jonathon Lipshy, Sammy
Lipshy and K.D. Ellis

Murray London

Barbara Malick

Lita Marishak

Mother of Sherry Marishak
Simon
Grandmother of Liane
Friedberg, Cooper Simon,
Hannah Simon, Avery
Simon,
Sister of Maris Cutting

Dr. Jeffrey Roy Medoff

Husband of Debi Silber
Father of Gena Medoff,
Kara Barnett, Ari Medoff,
Dr. Sar Medoff, Mica
Medoff and Carmi Medoff
Brother of De Lachman and
Bruce Medoff

Stuart Morse

Husband of Carol Morse
Father of Shannon Morse
and Jed Morse
Grandfather of Will Clifford,
Josie Clifford, Sam Morse
and Meg Morse

Dr. Ivan Pelton

Husband of Fern Pelton
Father of Julie Sayah,
Andrea Barber, Stacey Max
and Leslie Pelton
Grandfather of Ashley
Barber, Jake Barber, Emily
Max, Rachel Max, Lucy
Sayah, Betsy Sayah, and
Dustin Sayah

Clarice Post

Mother of David Post

Laurie Tycher Spitz

Wife of Dr. Robert Eisenberg
Daughter of Judy Tycher,
Brian Spitz, Julie Spitz and
Andrew Eisenberg
Sister of Tammy Tycher
Hoogland

Alexandra "Sandra" Streng

Mother of Randy Streng

Avshalom Sulami

Father of Sharon Skolnick,
Orly Mazur and Jonathan
Sulami
Grandfather of Micah
Skolnick, Rowan Skolnick,
Levi Skolnick, Eve Mazur,
Mila Mazur, Eli Mazur, and
Sophia Mazur

Denny Rodgers

Husband of Ann Kahn
Father of Josh Kahn, Robert
Rodgers, Richard Rodgers,
Robin Rodgers and Andrea
Cohen

Dr. Jack J. Tucker

Father of Dr. Susan
Sugerman, Sharon Tucker
and David Tucker
Grandfather of Ian
Sugerman, Adam
Sugerman, Seth Sugerman
and Jeffrey Clarke

Planting Seeds for Our Souls

A SPIRITUAL AND EMOTIONAL WELL-BEING WORKSHOP

Rabbi Debra Robbins

Meredith Pryzant, MSW, Director of Pastoral Support

February 10, 2026 | 7-9PM | Linz Hall

Register: tedallas.org/events

As spring arrives with the promise of growth and renewal, we'll explore ways to plant seeds in our own lives that, with care and nourishment, will help us grow. We will study Jewish texts together and learn how patience can be a vital self-care tool as we navigate this season—wherever we are in life. A light dinner and all materials will be provided as we learn, discuss and reflect.



Rabbi Debra Robbins



Meredith Pryzant

Getting Married?

Get Goin' to the Chuppah!



Registration is available for the spring session of Goin' to the Chuppah. This four-part series, led by Rabbi Michael Lewis and Temple member Miriam Kolni, a marriage and family therapist, is open to any couple planning to build a Jewish home.

The class is also a registered TwoTogether in Texas provider, which means couples getting married in Texas are eligible for a significant discount on their marriage license upon completing the class.

We encourage couples to attend at least three out of the four sessions so they can begin forming relationships with other participants. The first three classes are all held at Temple at 7PM, and the fourth class is a home-hosted Shabbat dinner.

Register: tedallas.org/events



Dates:

February 17

February 25

March 11

Dinner date to be determined after class starts



Rabbi Michael Lewis



Miriam Kolni

SHINE *the light*

SUPPORT AND RESOURCES FOR SPIRITUAL AND MENTAL WELL-BEING

Grief Support on Zoom

First Tuesday of the month, 12-1PM: Jan. 6, Feb. 3, March 3

In-Person Grief Support

Last Tuesday of each month, 12-1PM: Jan. 27, Feb. 24, March 31

Substance Abuse Support for Friends and Families

Thursdays every week from 5:30-6:30PM in person and on Zoom. Contact: Freda Heald, fredaheald@yahoo.com

Here for You

Are you or someone you know experiencing infertility? We are exploring creating a support group at Temple. For more information contact: Meredith Pryzant, MSW

No Barriers

Finances should never be a barrier to participation in Temple life. Confidential financial assistance is available for most Temple events, tuition and dues.

For information or Zoom links, please contact:

Meredith Pryzant, MSW, Director of Pastoral Support, mpryzant@tedallas.org
214.706.0000, ext. 2016

Gifts of Memory, Honor and Gratitude



OUR CONGREGATION

Dora Aronson Helping Hands Fund

Distributions by Rabbi David Stern to individuals in need of financial assistance, particularly in dire situations

Memory of Larry Barzune

by Rita Sue Gold

Memory of Lester Baum

by Rita Sue Gold

Memory of Bill Colen

by Artyce Colen

Memory of Judith Fried

by Rita Sue Gold

Memory of Ray Friedman

by Barbara & Stanley Katz

Memory of Viola Ganeles

by Rita Sue Gold

Memory of Bernard Hoffman

by Julie & David Kronick

Memory of Tillie Labovitz

by Joan Skibell

Memory of Estelle Magid

by Rita Sue Gold

Memory of Guy Manaster

by Manaster Family

Memory of Lew Weinstein

by Joan Skibell

Appreciation of Jack Baum

by Rita Sue Gold

Appreciation of Temple Clergy

by Rita Sue Gold

Appreciation of Temple

Emanu-El Choir

by Rita Sue Gold

Susan Salom Clergy Good Works Funds

Distributions to charitable organizations, individuals in need or community causes by Temple's clergy

Memory of Michael Bender

by Courtney Purvin

Memory of Judith Fried

by Herbert Fried

by Marcia Grossfeld

Memory of Honey L. Gottlich

by Adrienne, Tom & Brian Rosen

Memory of S. Ito Perl

by Marian Perl

Memory of I. Richard Levy

by Marcia Grossfeld

by Lynn & Jay Vernon

Memory of Brad A. Lipshy

by Rosie Stromberg

Memory of Lita Marishak

by Selly & Joyce Belofsky

Memory of Stuart Morse

by Patricia & Jim Krohn

Memory of Alexandra Streng

by Mark Bailey

by Erik Prenton

Memory of Jack Tucker

by Lindsay & Jeffrey Steinberg

Memory of Arlo Velie

by Debbie & David Sheinfeld

Memory of David Alan Vogel

by Marguerite Burtis & Peter Vogel

Memory of Lew Weinstein

by Ynette & James Hogue

by Bobbie & David Repp

by Dotty Weinstein

Appreciation of Bennett

Glazer

by Lindsay & Jeffrey Steinberg

Appreciation of Cantor Vicky

Glikin

by Nicole & Kevin Cooper

by Susan Cooper

Appreciation of Rabbi

Kimberly Herzog Cohen

by Nicole & Kevin Cooper

by Judy & Russell Silverstein

Appreciation of Michael Lewis

by Rachel Laude & Family

Appreciation of Cantor Leslie

Niren

by Rachel Laude & Family

Appreciation of Rabbi Debra

Robbins

by Marcia Grossfeld

by Barbara Levenson

by Kay & Cary Schachter

by Henrietta & Melvin Weinberg

Appreciation of Rabbi David

Stern

by Barbara Levenson

Appreciation of Hallie Weiner

by Nicole & Kevin Cooper

Bar Mitzvah of Jacob Hirsch

by Marcia Grossfeld

Birth of Jack S. Sarmiento

by Janet Eickmeyer

by Lindsay & Jeffrey Steinberg

by Sam Utay

Birthday of Larry Steinberg

by Suzanne Ablon

by Sister & Joel Steinberg

Honor of Gayle Johansen

by Marcia Grossfeld

Honor of Rabbi David Stern &

Rabbi Nancy Kasten

by Joyce & Joe Rosenfield

Anne and Sam Kesner Caring Congregation Fund

Assistance for Temple members through all phases of life, including hospitalization, elder care, military service, mental health challenges and grief

Memory of Judith Fried

by Alice Burstein

by Linda & Mike Sheff



OUR TEMPLE AND CEMETERY

Rose Marion & Lee H. Berg Building Fund

Upkeep and maintenance of our historic building

Memory of Judith Fried

by OriAnn Phillips & Scott

McCartney

Memory of Laurie Tycher

Spitz

by Carl Weisbrod

Temple Emanu-El Cemetery Endowment Fund

Distribution from the Temple Foundation supporting the maintenance and improvement of cemetery grounds

Memory of Elayne Brown

by Marcie & Michael Brown

Dorothy and Henry Jacobus Archives Fund

Support of special exhibits from our Archives

Memory of Julian Millheiser

by Peggy & Dave Millheiser

Rabbi Gerald J. Klein Memorial Cemetery Fund

Beautification and improvements of the Temple Emanu-El Cemetery

Memory of I. Richard Levy

by Jackie & Michael Hoffman & Family

Rabbi Gerald J. Klein Garden Fund

Maintenance of the Klein Garden

Memory of Harold Knop

by Nancy & Richard Fincher

Alex F. Weisberg Library Fund

Purchase of Judaic books, publications and entertainment media

Memory of Honey L. Gottlich

by The Stotland Family



GENERAL

Temple Emanu-El General Operating Fund

Support of Temple's general programs and events

Memory of Peggy Jane Cohen

Bennett

by Janet & Mitch Jacobs

Memory of Bessie Bodzy

by Rebecca & Kenneth Bruder

Memory of Susan F. Burt

by Rebecca & Kenneth Bruder

Memory of Anatoliy

Chernyavski

by Sofiya Samsonova

Memory of Joseph A. & Sarah Z. Epstein

by Joanne & Don Epstein

Memory of Ida Freed

by Diane & Gary Freed

Memory of Judith Fried

by Sara & David Gail

by Suzi & Jack Greenman

by Haley & Corey Hiscocks

by Judi & Randy Ratner

Memory of Honey L. Gottlich

by Richard Levin

by Alan Sandgarten

Memory of Julie Hirsch

by Ann & James Radebaugh

Memory of Bernard Hoffman

by Sara & Mark Albert

Memory of Judith Fried

by Sandy & Rabbi Barry

Diamond

Memory of I. Richard Levy

by Bernard Rabinowitz

by Jeanie Tolmas

Memory of Lita Marishak

by Selly & Joyce Belofsky

Memory of Stuart Morse

by Erika Bruce & Gary

Moskowitz

Memory of Clarice R. Post

by Marta K. Olchik

Memory of Laurie Tycher

Spitz

by Judy Tycher

Memory of Miriam Vernon

by Sandy & Rabbi Barry

Diamond

Memory of Lew Weinstein

by Bobbi & Richard Massman

by Barbara & Richard Toranto

by Joanie Weinstein &

Dr. Shelly Weinstein

Memory of Jennie Yonet

by Phyllis & Ronald Steinhart

Honor of Lisa & Steven

Lieberman

by Rita & Mitchell Rasansky

Honor of Rabbi David Stern

by Rachel & Mark Hausmann

Honor of Samuel Weyser

by Joan Davidow & Stuart Glass

Temple Emanu-El Endowment Fund

Distribution from the foundation supporting Temple's programs

Memory of Samuel J. Ablon

by Lindsay & Jeffrey Steinberg

Memory of Charles Bennett

by Janet & Mitch Jacobs



MUSIC AND PRAYER

Music Fund

Enhancement of Temple music programs

Memory of Honey L. Gottlich

by Tricia Michaelson

by Irwin & Sharon Ornish

Memory of I. Richard Levy

by Jackie & Sheldon Fleschman

by Douglas Sutherland

by Amy Wong

Memory of Lew Weinstein

by Tricia Michaelson

by Barbara Miller

Appreciation of Cantor Vicky

Glikin

by Ann Kahn

Appreciation of Cantor Leslie

Niren

by Joan Becker

Birthday of Sharon Ornish

by Lillian & David Shiro



ADULT PROGRAMS

Katherine F. Baum Adult Education Fund

Support for adult education programs

Memory of Greg Eaves

by Karen Eaves

Memory of Carl B. Flaxman

by Peggy & Dave Millheiser

Memory of Edna K. Flaxman

by Peggy & Dave Millheiser

Memory of Bernice Linz Kahn

by Peggy & Dave Millheiser

Memory of Esther Lurie

by Karen Eaves

Memory of Selma Tillman

by Julie Bleicher

Honor of Tal Drori

by Kerrie & Steven Wolfson

Honor of Debby Levy

by Kerrie & Steven Wolfson

Honor of Samuel Weyser

by Kerrie & Steven Wolfson

Henry D. Schlenger Ethics Symposium Endowment Fund
Support of the ethics symposium
Memory of Norma Schlenger
 by Paula Schlenger & Jim Gerhardt



SOCIAL JUSTICE

Hunger Relief Fund
Collection of funds for hunger relief throughout the year, especially during High Holy Days and Passover
Memory of Samuel J. Ablon
 by Annette Corman
Memory of Charlene Bassman Bernstein
 by Lisa Beckerman
Memory of Fred Milton Brown
 by Jacqueline & Fred Roberts
Memory of Joseph M. Brown
 by Jacqueline & Fred Roberts
Memory of Janet Cohen
 by Melissa Harley Cohen
Memory of Rosalee Cohen
 by Joyce & Joseph Rosenfield
Memory of Clara Feldman
 by Helen Feldman
Memory of Judith Fried
 by Courtney Hensel & Family
 by Linda & Garry Kahalnik
 by Joyce & Joseph Rosenfield
Memory of Edward Monroe Gerson
 by Lisa Beckerman
Memory of Honey L. Gottlich
 by Julie & Michael Lowenberg
Memory of Bernard Hoffman
 by May Sebel
Marriage of Macy & Conor Horowitz
 by Fran, Jeff, Mollie & Dani Toubin
Memory of Barbara R. Lantanzio
 by Cydney Forman
Memory of Stan Levenson
 by Annette Corman
Memory of Brad A. Lipshy
 by Annette Corman
Memory of Herman A. Malone
 by Katherine & Jimmy Harvey

Memory of Janet P. Newberger
 by Carol & Jon Weinstein
Memory of Faye Polakoff
 by Howard Polakoff
Memory of Dennis Rodgers
 by Annette Corman
Memory of Laurie Tycher Spitz
 by Annette Corman
Memory of Lew Weinstein
 by Helen Feldman
Appreciation of Brad Blumenthal
 by Nancy & Richard Fincher
Appreciation of Nancy Fincher
 by Nancy & Richard Fincher
Appreciation of Cantor Vicky Glikin
 by Stacey & Ricky Merlin
Appreciation of Rabbi Kimberly Herzog Cohen
 by Stacey & Ricky Merlin
Appreciation of Rabbi David Stern
 by Michael Hurst
Appreciation of Temple Emanu-El Clergy
 by Carte Engel Family
Birthday of Robert Stiffel
 by Jacqueline & Fred Roberts
Honor of Tina & Richard Wasserman
 by Barbara Pilo & Stephen Shore
Speedy Recovery of Edward Fox
 by Evelyn & Eugene Fox
Speedy Recovery of Daniel Kessler
 by Linda & Henry Kessler

The Jill Stone Tikkun Olam Fund
Support of Temple's social justice programs including initiatives, advocacy, projects and lectures
Memory of Rosalee Cohen
 by Rozelle & Richard Gilman
 by Carol & Jon Weinstein
Memory of Mary Kurtz
 by Cindie & David Kurtz
Memory of Lilli Sommer
 by Helen & John Stettler
Memory of Alexandra Streng
 by Elise & Mitchell Plaksen

Appreciation of Shira Stevenson
 by Michael Kerber
Birthday of Tricia Krauss-Lehrman
 by Ellen Kaufman McIntosh
Honor of Temple Emanu-El Clergy
 by Mary Spector & Julius Blatt

Priscilla R. Stern Memorial Literacy Fund
Support of literacy projects in the general and Jewish communities
Memory of Brad A. Lipshy
 by Julie & Michael Lowenberg
Memory of Zolton Reich
 by Kim & Avie Schonwald
Memory of Beatrice Schneider
 by Lynn & Mark Bernstein
Memory of Ben Schneider
 by Lynn & Mark Bernstein
Memory of Gerald Paul Silber
 by Suellen & A.J. Rosmarin
Memory of Dorothy F. Wittels
 by Fran, Jeff, Mollie & Dani Toubin
Appreciation of Rabbi David Stern
 by Lindsay & Jeffrey Steinberg
Birth of Jack S. Sarmiento
 by Debbie & Marc Andres
 by Joyce & Alan Goldberg
 by Shari & Steve Goldberg
 by Randy & Judi Ratner
Birthday of Betty Jo Bell
 by Cynthia Schneider & James Brodsky

Social Justice Youth Education Fund
Support of worthwhile educational causes for youth in need
Memory of Michael Cohen
 by Mindy & Rick Cohen
Memory of Ruth Cohen
 by Mindy & Rick Cohen
Memory of I. Richard Levy
 by Beverly & Malcolm Bonnheim
Memory of Roslyn Meadow
 by Janet & Mitch Jacobs



YOUTH AND EARLY CHILDHOOD EDUCATION

Early Childhood Education Center (ECEC) Fund
Support of ECEC programs
Memory of Lilly Berman Bluestein
 by Susan & Joel Litman
Memory of Jules Edward Colton
 by Diane Alper Colton
Memory of August Danburg
 by Kerrie & Steven Wolfson
Memory of Rosalie Danburg
 by Kerrie & Steven Wolfson
Memory of Judith Fried
 by Carly, Scott, Beau, Ruby & Leo Goldman
 by Becky & Norman Slakman
Memory of Sol M. Gilbert
 by Shelley & Richard Hirsh
Memory of Lew Weinstein
 by Janice & Norman Winton
Memory of Iris Wolfson
 by Kerrie & Steven Wolfson
Memory of Jerome Wolfson
 by Kerrie & Steven Wolfson
Anniversary of Steve Gilbert
 by Donna & Richard Hirsch

Gina Rosenfield Levy Greene Family Camp Scholarship Fund
Financial assistance to families for Greene Family Camp
Memory of Gina Rosenfield Levy
 by Phyllis & Phil Stoup
Memory of I. Richard Levy
 by Phyllis & Phil Stoup
 by Jan & Tom Timmons
Memory of Dennis Rodgers
 by Phyllis & Phil Stoup
Memory of Adolph Stoup
 by Phyllis & Phil Stoup
Memory of Bess Meyer Stoup
 by Phyllis & Phil Stoup

Karla & Larry Steinberg Center for Jewish Learning Endowment Fund
Birthday of Larry Steinberg
 by Fran, Jeff, Mollie & Dani Toubin

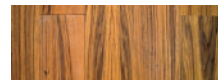
Paul Lande Summer Camp Scholarship Fund
Scholarships for children to attend Jewish summer camp
Memory of Dorothy K. Boris
 by Sheri & Jack Vine
Memory of Beverly Lande
 by Sid Lande
 by Sheri & Jack Vine
Memory of Nethie K. Lande
 by Sheri & Jack Vine
Memory of Paul Lande
 by Sheri & Jack Vine

Lomdim Project
Support of an open and inclusive community for religious school children with special needs
Memory of Maurice H. Behrendt
 by Lynn & Bob Behrendt
Memory of Beatrix Reid Lawrence
 by Gail & Dana Lawrence
Birthday of Larry Steinberg
 by Patricia & Jim Krohn

Metz Youth Fund
Scholarships for Jewish activities sponsored by Temple or other Jewish organizations
Memory of Alan Cohen
 by Mindy & Rick Cohen
Memory of Honey L. Gottlich
 by Ellen & Allan Metz
Memory of Annette Kimmel
 by Mindy & Rick Cohen

Martin & Charlotte Weiss Religious School Fund
Scholarships for religious school fees, books and additional expenses
Memory of Naomi Bloom
 by Julie & Bob Herman
Memory of Sheldon Fleschman
 by Sharon & Dwight Hill
 by Carol Hirsh
Memory of Julie Hirsh
 by Julie & Bob Herman
Anniversary of Sharon & Mike Willey
 by Shelley & Danny Wylie

Youth Scholarship Fund
Financial assistance to families for participation in youth programs
Memory of I. Richard Levy
 by Robin Kosberg & Mark Washofsky



WRJ
Funds to support activities of Women of Reform Judaism

YES Fund of Sisterhood
Support of the Youth, Education and Service programs of Women of Reform Judaism
As a Contribution
 Wendy Palmer
In Honor of Sharon & Mike Willey
 by Celia Saunders & Minnette Klein
As a Contribution
 Emily Atlas
 Diana Edelman
 Pam Karpel
 Polly Weisberg
 Marla H Bane
 Susie Litman
 Julie Lowenberg
 Kerry Silver
 Sharon Willey
 Lynn Salzberger
 Louise Rosenfield
 Nancy Israel
 Margie Landson
 Barbara Einsohn
 Ginafer Shelton-Gray
 Julie Fields
 Yuh Min Chook
 Kristy Goltz
 Leslie Null
 Jan Timmons
 Roz Katz
 Allison Schwartz
 Mindy Cohen
 Leah Beth Kolni

Freda Gail Stern Fund
Support of social action projects consistent with WRJ's mission
In Honor of Leah Beth Kolni
 by Steve Brown
In Honor of Minnette Klein
 by Steve Brown
As a Contribution
 Wendy Palmer

Learning from the past, celebrating the present, committing to the future...

Yom Tzedek

Social Justice at Temple Emanu-El

On April 12, Temple will convene a social justice gathering to build on its 154-year history of making the world a better place. Together with the area chapters of Women of Reform Judaism, we'll share our stories, acknowledge the work we've done and commit to an exciting way forward.

"It will be a monumental day of gratitude, of meeting the moment and deciding together how we as a congregation will live out the promise of our historic commitment," says Rabbi Kimberly Herzog Cohen.



PAST

Organizations that Temple Members Helped Establish

1897: United Charities (later becomes United Way of Dallas)
1910: Infant Welfare and Milk Association
1965: Rhoads Terrace Pre-school
1986: Vogel Alcove
2005: Dolls for Darfur
2009: Vickery Meadow Neighborhood Alliance

PRESENT

Current Projects

Jill Stone Community Garden at Temple Emanu-El
Dallas Area Interfaith
Vickery Meadow Food Pantry
Literacy Achieves (formerly Vickery Meadow Learning Center)
Now Forward (formerly North Dallas Shared Ministries)
Advocacy against Religion in Texas
Public Schools

FUTURE

Are You With Us?

Join us to Take Your Place!

Sunday, April 12 | 12:30-4PM
Register: tedallas.org/events

It is Temple Emanu-El's obligation to engage in the ongoing task of world repair. We value being an integral part of and contributor to the total Dallas community.

—Core Values Statement, adopted April 2000

With Bear Hugs, from Temple

By Livia Stevenson

When Aya Margalit created Noya's Bears last year, the plan was to offer sweet stuffed animal hugs to kids with special needs in Dallas. Now, Noya's Bears is going global!

"Noya's story and her love of stuffed animals is reaching children everywhere, spreading comfort, joy and smiles far beyond what we could have imagined," says Aya, Temple's *sh'lichah*, or Israel ambassador.

The stuffed animal collection was launched in loving memory of Noya Dan, a 13-year-old from Kibbutz Nir Oz who was murdered on Oct. 7, 2023. In that first year, the initiative collected and distributed over 500 bears to children with special needs. Aya has shared the initiative with her cohort of *sh'lichim* around the world, and they are bringing the project to their own congregations and organizations.

This year's collection launches on Jan. 25, with donations accepted through Feb. 24. Volunteers will assemble and deliver the bear packages from Feb. 25 to March 7, a period that coincides with the Hebrew month of Adar, traditionally devoted to increasing joy. It's a meaningful reflection of Noya's spirit, as these bears bring happiness and comfort to children in need.



You can use our Amazon wish list, available via QR code, to send stuffed animals directly to Temple, and there are plenty of volunteer opportunities to get involved. Together, let's make this year's Noya's Bears even bigger,

brighter and more far-reaching than ever.



FEBRUARY CAFÉ EMANU-EL

Wednesday, February 17 | 2PM

For February's Café Emanu-El, our vibrant community of older adults welcomes Aya Margalit for a meaningful program about the story behind Noya's Bears and her personal bond with Noya. Following the presentation, attendees are invited to help write heartfelt notes to include in the bear packages being delivered later this month. Come enjoy community, conversation and a chance to spread a little extra joy.

Register: tedallas.org/events

Living the Legacy

A Guide for Families at the MLK Holiday

IN PERSON

Sunday, January 18 | 8AM to noon | Jill Stone Community Garden at Temple Emanu-El

Help grow the goodness together through hands-on service in our community garden. As you arrive, you'll be assigned tasks to take care of immediate needs such as planting and tending the garden. All produce grown is donated to the Vickery Meadow Food Pantry. No gardening experience is needed; everyone is welcome. Bring gardening gloves if you have them, and we'll provide all tools and water.

AT HOME

These projects will be done in your own home and you will be responsible for delivering the items to the specified organization. Supply lists for each project are available. Contact: Erica Matsil, Director of Social Justice and Family Engagement, ematsil@tedallas.org

Purim Mishloach Manot gifts for kids: Noya's Bears

Create packages with new stuffed animals to donate to Dallas-area nonprofits that work with children, many with special needs. Bring to Temple beginning Jan. 25, or purchase items from the Amazon wish list, shared via QR code on p. 25.

Vickery Meadow Food Pantry

The Vickery Meadow Food Pantry is in need of specialty items for their clients. These items are not always available on our shelves, but when they are, they bring real joy to the families we serve. When delivering, please label the bag with the expiration date of the oldest item. Contact for drop-off: Carol Weinstein, clnewb@gmail.com

Bye-Bye Bags for Vogel Alcove

In addition to meals provided during the day, Vogel Alcove distributes Bye-Bye Bags to children at the end of the day, helping to bridge the gap between meals. The Bye-Bye bags consist of lunch-size paper sacks filled with a variety of shelf-stable snacks, a small bottle of water or fruit juice and plasticware if needed. Contact: Heather Bradford, hbradford@vogelalcove.com

Hygiene bags for Family Gateway

These bags provide personal care items to families experiencing homelessness. Please use regular-sized items, not travel-sized. Contact: Kathy Kidwell, kkidwell@familygateway.org

Snack Bags and Welcome Baskets for Stewpot

Snack Bags are gallon-size plastic-zippered or drawstring backpacks filled with nourishing snacks for hungry clients. Everything must be prepackaged and ready to eat. Homemade items are not allowed. Please avoid hard foods or items that need a can opener or other device to open them. To arrange a drop-off, contact: volunteer@thestewpot.org

Welcome Baskets are laundry baskets containing new household items, including bathroom necessities and cleaning supplies, for newly housed clients. Contact to coordinate a drop-off time: John Swindle, johns@thestewpot.org



SUPPLY LISTS FOR SOCIAL JUSTICE KITS

Vickery Meadow Food Pantry

Spice kits: Spices are hard to find in many pantries. Some ideas for the kit include:

- Salt and Pepper
- Garlic Powder
- Onion Powder
- Cinnamon
- Chili Peppers
- Turmeric
- Ginger

Kids' Snacks: When kids visit the pantry, they love to be given a small bag of their favorites.

- Ziploc or brown paper bag
- Applesauce
- Chips
- Pirates Booty snacks
- Granola bars

Soup Kits: Soup kits are great this time of year!

Each kit should be put into a jar or Ziploc bag and include the ingredients needed for the recipe.

You can find different recipes at [wholefully.com/homemade-soup-mixes-in-a-jar/](https://www.wholefully.com/homemade-soup-mixes-in-a-jar/).

Birthday Cake Packages: Everyone loves to celebrate their birthday, but some families cannot afford the ingredients.

Put together a cute basket for the clients:

- Pan to bake cake
- Box cake mix
- Icing
- Birthday candles
- Vegetable oil
- Eggs



Bye-Bye Bags for Vogel Alcove

Two from this list:

- Goldfish crackers
- Cheese crackers (no peanut butter please)
- Individual-size boxes of cereal, such as Cheerios

One from this list:

- Chicken salad kit with crackers (most popular)
- Any kind of protein source with pull-tab top (except nuts)

Two from this list

(please include a spoon if needed):

- Fruit cup
- Applesauce cup or squeeze packet
- Fruit strips/snacks

Note: Please write the expiration date of the oldest item on the outside of the bag.

Hygiene bags for Family Gateway (full sizes only)

- Shampoo
- Conditioner
- Deodorant
- Mouthwash
- Toothpaste
- Toothbrushes
- Body wash
- Body scrub
- Body towels
- Face towels

Snack Bags for Stewpot

- Bottle of water
- Electrolyte packets
- Soft cereal bar
- Tuna packets
- Pop-top Vienna sausages
- Individual cup of peanut butter
- An encouraging note (optional)

Welcome Baskets for Stewpot

- Body towels
- Female deodorant
- Dish sponges and soap
- Toilet brushes
- Toilet paper
- Toilet cleaner
- Small travel-size laundry detergent
- Brooms/mops
- Trash cans
- Trash bags
- Can opener
- Dishwasher pods
- Mop bucket
- Paper towels
- Cleaning products, i.e., Fabuloso, all-purpose cleaner, glass cleaner, dish soap



The Window (USPS #017-824) is published
six times per year by Temple Emanu-El Congregation,
8500 Hillcrest Road, Dallas, TX 75225-4204.
Periodicals Postage Paid at Dallas, Texas.

POSTMASTER, send address changes to:

Temple Emanu-El Window
8500 Hillcrest Road
Dallas, Texas 75225-4204

PERIODICALS
Time Sensitive Material

