

The Window



Because
We Care

Shavuot 2024

Making Temple Safer

Our New Leaders

CONTENTS



PRAYER AND SPIRITUALITY

A Message from Rabbi David Stern	3
In the Torah	4
Shavuot	4

COMMUNITY

Update on Perimeter Barrier	5
Meet the New Trustees	6
Introducing Café Emanu-El	8
Cinema Emanu-El Returns	9
Cover Story: Shine the Light	10
Celebration and Remembrance	13
Tributes	17
MAC Season Preview	19
Annual Fund Spotlight	20



SOCIAL JUSTICE

Souls Bloom in Temple's Garden	24
Teen Trip to Remember	25



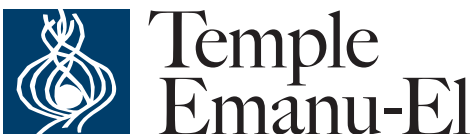
LEARNING

Pre-K and Kindergarten Grads	21
Confirmation Classes of 1959 and 2024	22



ISRAEL

Artzenu: Photography Exhibit	26
Israel Independence Day at Temple	26
A Yom HaAtzmaut Concert	
Benefiting Israel: Noa	27



Founded in 1872
8500 Hillcrest Road | Dallas, Texas 75225
214.706.0000 | tedallas.org

Temple President
Bob Krakow

Executive Director
Meredith J. Fried

Clergy
Rabbi David E. Stern
Rabbi Debra J. Robbins
Cantor Vicky Glikin
Rabbi Amy Rossel
Rabbi Kimberly Herzog Cohen
Cantor Leslie Niren
Rabbi Michael Lewis

**Department of
Congregational Advancement**
Sandy Diamond, *Senior Director*

The Window
Connie Dufner, *Senior Director
of Communications*
Ann Wilson, *graphic designer*
Livia Stevenson, *writer*
Ilana Paikoff, *writer*

In the Darkness of Struggle, Temple Shines a Light



Rabbi David Stern

As I was preparing to be ordained a rabbi and interviewing for my first job, I visited a wonderful congregation where the rabbi had a sterling reputation as a gifted and wise leader of a dynamic community.

During a one-on-one conversation, the renowned rabbi said to me, “David, if we

end up in a match, there is something I need you to know. I live with depression. There are days when I simply can’t get out of bed. That fact will be an element in your rabbinate here, and I want you to know it in advance.”

For unrelated reasons, I did not end up at that congregation, and (gratefully) came here to Dallas instead. But that rabbi’s candor and courage have always stuck with me. He recognized his depression for what it was: not a source of stigma or shame, but a painful disease that he lived with and that sometimes limited him. He could have just as easily been describing the debilitating effects of cancer or chemo or a severe heart condition.

Somewhere along the line, that rabbi had developed or received a blessing: the ability to speak his pain aloud. He had somehow realized that he was not alone, that he could seek help instead of remaining silent. He had learned that mental illness is not a failure or a character flaw.

But the truth is, that rabbi was an exception. Too often in our community, we reinforce taboos around mental illness instead of breaking them down, contribute to the silence instead of sharing our stories, and thereby deepen the isolation of people who are already feeling desperately alone.

But when we do share those stories — of addiction in our families, of post-partum depression, of growing up with a bipolar parent, of the days we can’t get out of bed — a whole new kind of awareness happens. “You have a teen who struggles with depression? Me too.” “You go to Al-Anon? Me too.” “You are an exhausted caregiver for someone who struggles with mental illness? Me too.” “You have known the devastation of a child’s suicide? Me too.”

Through our Shine the Light initiative, Temple Emanu-El is deeply and publicly committed to placing mental health awareness at the center of our pastoral work. We know that listening saves lives. We know that the sharing of resources bolsters hope. And we know that when suicide takes a loved one, an understanding community of love and care can help ease the pain of survivors and honor the memory of lives cut short too soon.

May is Mental Health Awareness month (Rabbi Robbins will be addressing these themes in her Shabbat sermon on May 10), but through the efforts of Shine the Light, we are working to make mental health awareness a daily concern at Temple. From parenting strategies to grief support groups to the most basic work of connecting people with similar stories, Shine the Light is sending the message every day that our congregants do not have to face these challenges alone. At the Shine the Light page on the Temple website, tedallas.org/connect/shine-the-light/, you will find links to important resources in the Jewish and broader community for individuals and families confronting mental health challenges. Here at Temple, our clergy and pastoral team are present to provide listening and guidance.

In June, we will come to Parashat Beha’alotecha, and in it we will read Numbers 12:13. It is the prayer for healing Moses offers for his sister Miriam. With a grand total of five Hebrew words, it is perhaps the most searing and visceral prayer in the Bible: *El na refa na la* — “Please God, heal her.” It is the prayer we have said for our children as they have struggled with addiction. It is the prayer we have said for our spouses when they rage in the darkness. It is the prayer we have said for ourselves, when it takes everything we have to get out of bed in the morning. It is the prayer we have offered for our friends when they are paralyzed by devastating loss. It is the prayer that we as a community strive to make manifest in word and deed, committed to providing strength and support for so many families who share this path.

May we be a place where people can speak their pain aloud. May we be a loving community that listens with courage and compassion. May we be a source of light to those who have struggled in the shadows. May we walk together on a new path of healing and hope.

For more stories about Shine the Light, see p. 10.



Weekly Readings for May/June 2024

May 3–4: Acharei Mot, Leviticus 16:1 – 18:30

Olan Lecture with Rabbi Joshua Garroway

May 10–11: K'doshim, Leviticus 19:1 – 20:27

12th-grade blessing, sermon by Rabbi Debra Robbins focusing on mental well-being

May 17–18: Emor, Leviticus 21:1 – 24:23

Yom Ha'Atzmaut All-In Shabbat and congregational dinner

May 24–25: B'har, Leviticus 25:1 – 26:2

May 31–June 1: B'chukotai, Leviticus 26:3 – 27:34

June 7–8: B'midbar, Numbers 1:1 – 4:20

June 14–15: Naso, Numbers 4:21 – 7:89

Shabbat honoring Juneteenth

June 21–22: Beha'alotcha, Numbers 8:1-12:16

June 28–29: Sh'lach, Numbers 13:1-15:41

Pride Shabbat

Narratives

THE STORIES OF OUR PEOPLE, AND THE STORIES YOU'LL CREATE YOURSELVES.

Tikkun Leil Shavuot | June 11 | 7PM arrival

Sinai Stations, 7:10-8:20PM, in person only

7:10-8:20PM (This part of the evening will include two 30-minute sessions, and participants will have the chance to participate in both.)

Station 1: Barbara Zale Center for Living History

Browse through Confirmation class photos from 1918 to now, while learning with Rabbi Michael Lewis about the Reform history of Confirmation and the rituals of Shavuot.

Station 2: Linz Hall

Watch your own story take shape as you study text and practice writing with Rabbi Debra Robbins and author and Temple member Jane Saginaw.



Standing with Sinai

8:30-9:15PM, Stern Chapel, in person

and online | Hear the story of the Ten Commandments from 10 different readers using 10 different Torahs

Cheesecake Reception

9:15PM | Enjoy Shavuot's traditional dessert with non-dairy and gluten-free alternatives

Register: tedallas.org/events | Contact: Tal Drori, tdrori@tedallas.org

Festival Morning Service

Wednesday, June 12 | 10:30AM | Stern Chapel

REST AND RENEWAL FOR OUR CLERGY

Cantor Leslie Niren and Rabbi Amy Rossel will be taking sabbaticals over the next few months.



We wish them best of luck as they enjoy a well-deserved opportunity to recharge.

Cantor Niren will be on sabbatical through July 18. In her absence, Hallie Weiner is helping to support the clergy team.



Rabbi Rossel will take the first part of her sabbatical from June 23 to July 29, and the rest later in the year.

We look forward to welcoming them back to Temple!

Temple Board Approves Securing the Campus Perimeter

After much discussion over the past several months, Temple has approved the construction of a perimeter barrier around our campus. The barrier will be a combination of ornamental steel fencing, brick and low concrete walls and, along with a guard booth for controlled access.

FGM Architects, a firm with extensive experience in securing faith-based institutions, has been selected for the design. The timeline calls construction of the fence to begin this summer. We hope that the more intensive aspects of the plans, such as constructing the guard booth and realigning the traffic flow, will be installed as expected by the first quarter of 2025.

“The plan ensures Temple will remain welcoming and accessible,” said President Bob Krakow, Rabbi David Stern and Executive Director Meredith J. Fried in a letter to the congregation announcing the barrier. “It respects the architecture and aesthetics of our building and campus, improves traffic flow and at the same time significantly strengthens security for the Early Childhood Education Center, Youth Learning + Engagement and our entire congregation.”

Jon Rollins, a Temple vice president and architect, created the preliminary design, which will be incorporated by FGM. “It had to be aesthetically compatible with our beautiful campus, and not feel like a prison, but like the warm and welcoming community we always are,” Jon says.

The design builds on the existing barriers, including the 36-inch low concrete walls that were added in the 2014-2016

Our Temple | Our Future capital project. It calls for an 8-foot ornamental steel fence on the west, south and east sides of Temple, with an 8-foot brick wall to the north.

Other details include:

- Five vehicular gates and two pedestrian gates
- Automatic entry gate with a swing arm for Temple members, staff and schools
- A guard booth that is staffed whenever Temple is open
- Space for up to 25 cars to “stack” while waiting for entry, reducing possible backups on Hillcrest Road
- An exit lane to Hillcrest for vehicles that are denied entry
- Immediate entry for emergency and service vehicles

The process included extensive conversations with our law enforcement partners, lay leaders and congregants. The Access Task Force, led by Scott McCartney and Julie Weinberg (see right), researched other methods of securing the perimeter, such as increased security staffing and more cameras. Those were ultimately deemed to be more expensive and less effective.

ACCESS TASK FORCE

Co-Chairs

Scott McCartney
Julie Weinberg

Randy Ratner

Jon Rollins
Peter Weinstock

Members

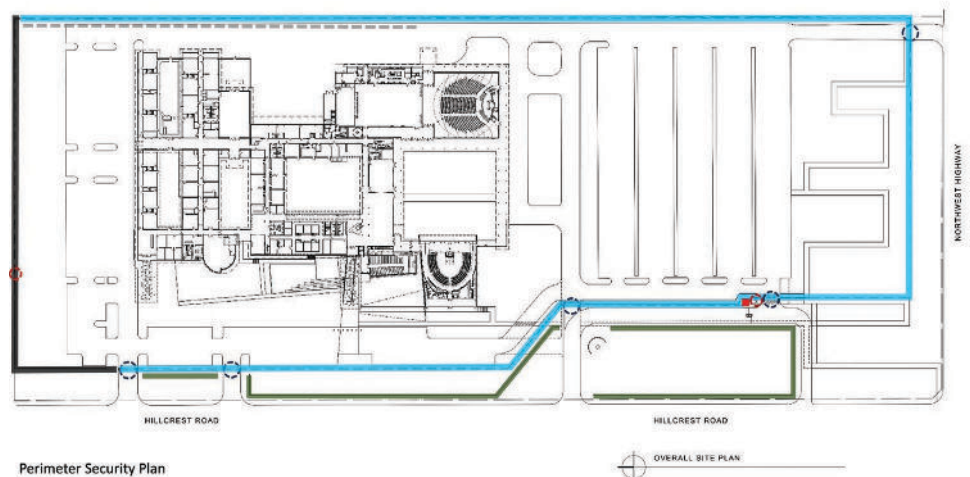
Sara Albert
Debbie Andres
Bruce Bernbaum
Liz Chalfant
Greg Gerstenhaber
Risa Gross
Josh Kahn
Bob Krakow

Staff and Clergy

Meredith J. Fried,
Executive Director
Phil Gordon,
Director of Security
Rabbi David Stern
Cantor Vicky Glikin



From top: Example of a guard booth, at Hockaday; existing barriers at Temple; examples of ornamental steel fences



Perimeter Security Plan

OVERALL SITE PLAN

Meet Our New Officers and Trustees



Lauren Bender

Personal: Dallas native and lifelong Temple member, married to Jason, mother of three

Professional life: Corporate/regulatory attorney by training and have spent the past several years focused on nonprofit governance work, including at Lamplighter, Planned Parenthood and the Dallas Museum of Art

Temple activities: Bylaws Revision Task Force; previously served on the Board of Trustees; ECEC; YL+E

Temple is here for me because... it's a part of me: I am a fourth-generation Temple member and my three children are fifth-generation members. It's where we mark and celebrate our milestones and lifecycle events, and where we feel at home spiritually. My family and I are so grateful to be part of this incredible community committed to Jewish learning, tradition and social justice.

My goals for Board service are... to work with the wonderful clergy, staff and lay leaders to help ensure Temple continues to thrive and meet and exceed the needs of our Temple community and the community at large into the future.



Arlene Glazer

Personal: Hometown Houston, Temple member for 30 years, married to Michael, mother of two adult children

Professional: Neiman Marcus Group

Temple activities: ECEC volunteer; served on rabbinic and staff search committees; helped update Temple's employee handbook; religious school volunteer parent; High Holy Days packet assembly; TE150 volunteer

Temple is here for me because... clergy and staff have always supported my family through hard times as well as helped us celebrate simchas together! We have always felt the love and unwavering support from Temple and the community at large.

My goals for Board service are... to give back to Temple and to continue my family's longstanding commitment to involvement and service.



Eric Goldberg

Personal: Native of Dallas and lifelong Temple member, married to Sharon, father of two children

Professional life: Insurance Broker at IMA Financial Group

Temple activities: Previous Board of Trustees; Cemetery Committee

Temple is here for me because... it feels like I was born into the congregation. My grandparents were Rabbi Gerald and Dorothy Klein, and my life is deeply rooted in Temple. I cherish the fact that many of my friends from the Temple preschool are still in my life, and our children are growing up with the same sense of love and community.

My goals for Board service are... to contribute to making Temple a home for many in our community. In a time of rapid change and challenges, we must strike a balance and ensure Temple remains a safe haven for all.



Jeff Kitner

Personal: Native of Dallas, adult Temple member for 16 years, married to Miriam, father of one

Professional: COO, North Dallas Chamber of Commerce; former litigation partner with Jackson Walker LLP

Temple activities: YL+E Committee; Temple Votes Committee; Advocacy Committee; Purim Spiel

My goals for Board service are... to continue Temple's efforts to make a positive difference in our community through civic engagement and advocacy.



Lacey Laude

Personal: Temple member since 2009, married to Michael, mother of three, from Plano

Professional life: Licensed Master of Social Work specializing in foster care home development

Temple activities: ECEC: Hannukkah Party chair; Fall Festival chair; Parents Association Co-President. YL+E: Purim Carnival Chair; Steering Committee Co-Chair. Women of Reform Judaism: Hanukkah Bazaar chair

Temple is here for me because... it always has been! From Young Adult dinners to my conversion to the ECEC to the Sisterhood to YL+E to my new role on the Board of Trustees, Temple has been a second home for most of my adult life.

My goals for Board service are... increased understanding of behind the scenes. How does Temple do it ALL and do it so well? I can't wait to find out.



Ann Rosenzweig

Personal: Native of Hot Springs, Arkansas, where her parents were leaders of the small Jewish community, Temple member for 20 years

Professional life: Technology and nonprofit organizations

Temple activities: The Well; Older Adults Committee; Careline coordinator; new member deliveries; assembly/delivery of High Holy Days and TE150 boxes

Temple is here for me because... Temple Emanu-El is my Jewish home. Temple empowers me to live my Jewish values and embrace my Jewish identity by offering diverse opportunities for engagement and growth.

My goals for Board service are... to get a better understanding of the inner workings of the Temple Board so that I can leverage my skills and experience to address issues and find solutions.



May L. Sebel

Personal: Dallas native and lifelong Temple member, mother of two adult children

Professional: 15 years in the Dallas fashion industry, 13 years as a law firm administrator, 14 years as an independent human resources consultant

Temple activities: Adult b'nai mitzvah; Archives Committee; library and archives task force; Facing Our Truths; Women of Reform Judaism; mentor for conversion students; Annual Fund; collaborator on employee handbook updates; Art & Furnishings Committee of Our Temple | Our Future

Temple is here for me because... it is my spiritual home and literally has been since I was born! I am a third-generation Temple member on both sides of my family. My grandfather, Sol Loeb, was an early founder of the Temple. All my predecessors were active in Temple service, so it is in my genes!

My goals for Board service are... to be able to make a difference via any committees to which I might be appointed. I am particularly interested in diversity issues and house and grounds. Both areas would use my previous professional and volunteer experience.



Catherine Susser

Personal: Previously lived in New Orleans, Houston and Corpus Christi; married to Sam, mother of three young adults

Professional life: Accounting; chief accountant at the Corpus Christi ISD and later Board president.

Temple activities: Finance Committee; Budget Committee; Dues Task Force

My goals for Board service are... to become more settled in Jewish life in Dallas by becoming involved. I am still learning how I can be of service, but I look forward to being a positive and caring member of our community.



Madeleine Wolf

Personal: Native of Dallas and lifelong Temple member, married to Chris, mother of two

Professional life: Corporate mergers and acquisitions lawyer at Alston & Bird

Temple activities: ECEC Steering Committee

Temple is here for me because... it provides such a loving, inclusive and warm environment for my children at ECEC and in the larger congregation.

My goals for Board service are... to highlight and expand the generosity of our Temple community and help contribute to the warm and inviting atmosphere that Temple creates.



Jeff Zlotky

Personal: Dallas native, Temple member since 1993, married to Lauren, father of four young adults (two sets of twins!)

Professional life: Partner and General Counsel of NGP

Temple activities: Bylaws Revision Task Force

Temple is here for me because... our community has provided great joy to our family during happy times and has provided great comfort during our saddest times.

My goals for Board service are... to use my decades of professional experience as an attorney and prior work with many area nonprofits to provide counsel, wisdom, representation of our members and creative solutions to the issues that impact our very large Temple community.



Café



Emanu-El

SOCIAL HOUR FOR SENIORS

Come to Temple to schmooze, sip and snack during the day. You'll have a chance to catch up with friends and visit with your Temple community.

Wednesday, May 22 | 2-3PM | Tycher Gathering Space
Register: tedallas.org/events

Contact: Katie London, Director of Engagement Opportunities and Older Adults, klondon@tedallas.org



CELEBRATE PRIDE MONTH WITH TEMPLE!

Temple is proud to partner with the Aaron Family JCC and Temple Shalom again this year to present J-Pride, a welcoming and united Jewish front at Dallas Pride on June 1 at Fair Park.

Representatives from all three communities will staff the booth and share their excitement about our inclusive and affirming communities. Please swing by the booth to show support, say hi and pick up some cool swag.

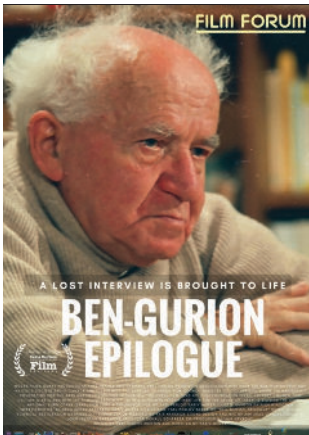
Interested in volunteering? Sign up for one (or more!) two-hour shifts at tedallas.org/events or email Shira Stevenson, Director of Small Groups and Diversity at sstevenson@tedallas.org



Cinema Emaru-El

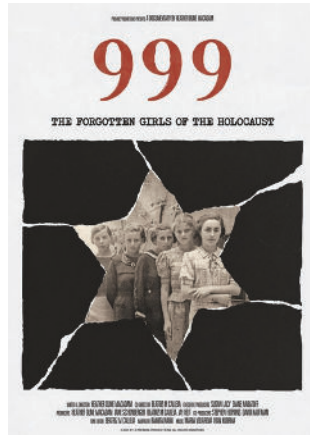
Beginning July 9 | Tuesdays at 7PM | Tobian Auditorium

\$5 PER FILM OR \$20 SERIES PASS



**Ben-Gurion
Epilogue
JULY 9**

SCAN TO WATCH THE TRAILER



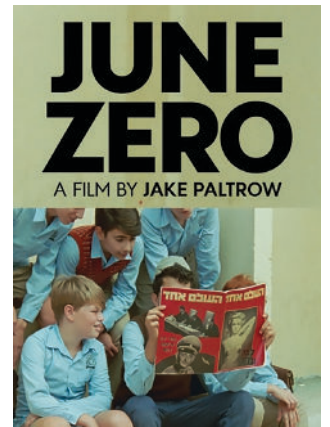
**999: The Forgotten
Girls of the Holocaust
JULY 16**

SCAN TO WATCH THE TRAILER



**Farewell,
Mr. Haffmann
JULY 23**

SCAN TO WATCH THE TRAILER



**June
Zero
JULY 30**

SCAN TO WATCH THE TRAILER



Register: tedallas.org/events | Contact: Sammy Weyser, sweyser@tedallas.org

SHINE *the light*

Hugs, Hope and Healing

Temple lives out its commitment to mental well-being



May marks the 75th year of observance of Mental Health Awareness Month. Throughout the month and beyond, the National Alliance on Mental Illness works to eradicate stigmas, educate the public and advocate for policies to promote mental well-being.

At Temple, caring for the inner health of our congregants is a year-round effort, and a dedicated group of staff, clergy, lay leaders and professionals works together for Shine the Light, an initiative to take mental well-being from the shadows into the forefront of caring.

On these pages you'll learn more about the mission, leadership and partnerships of Shine the Light, as well as hear from Freda Heald about her journey of healing and helping others.

AT A GLANCE

Mission

A Temple initiative serving the mental well-being needs of our community

Leadership

Committee: A group of lay leaders creates policy and secures programming partners for the work of Shine the Light.

Advisory Board: This group is comprised of mental health professionals including psychiatrists, therapists, school counselors and social workers. When our congregation is affected by a crisis, we leverage the knowledge provided by these congregants to respond proactively and appropriately using evidence-based mental health best practices.

Staff: Meredith Pryzant, Director of Member Support, works with Shine the Light leadership on programming partnerships and referrals for our congregants, and coordinates with Temple clergy on pastoral care.

How We Work

One example of the wide-ranging work of Shine the Light is the aftermath of the October 7 attacks on Israel. The clergy and staff team worked quickly with mental health professionals to facilitate processing of emotions and created opportunities for learning about how to talk to children of various ages. Our pastoral team reached out to over 100 congregants with family members living in Israel to check in and provide pastoral counseling when needed. Temple clergy and the advisory board guided similar efforts to

address the increased occurrence of antisemitism in Dallas and on college campuses.

Conversation Cards: The cards are a tool to help start conversations encouraging positive mental well-being. They are available in clergy waiting areas and on the information kiosk at the Hillcrest entrance to Tycher Gathering Space.

Mental Health Checklist: A crisis safety plan for teens and young adults to create that identifies warning signs of struggle, coping strategies, support systems, resources for mental health professionals and emergency services

Contact: Meredith Pryzant, Director of Member Support, mpryzant@tedallas.org

Friendship and Shared Passion



Nancy Shanks and Lisa Solomon are close friends and are both committed to Temple's efforts to focus a caring spotlight on mental well-being. They will move into the role of co-chairs of the Shine the Light committee in a few months.

Nancy (pictured left): Mental health is a huge and very personal concern. Throughout my life I have battled anxiety and have watched as family members have had similar struggles. Sadly, my life

has also been profoundly touched by suicide, having lost several close friends and a family member to suicide after years of depression and mental illness.

I became interested in Shine the Light two years ago when the world was opening back up after the pandemic and a mental health crisis challenged our country, our Temple community and my own family. As a new committee member and a mother of two teen daughters, I participated in the partnered program with Youth Learning + Engagement that discussed teen anxiety and depression, and equipped parents with resources as their adult children prepared for college and beyond. These and other conversations motivated me to become more involved with the Temple-wide effort to support mental health and, when asked, I emphatically agreed to chair Shine the Light.

Finally, as a member of the "sandwich generation" (middle-aged adults caring for their children and elderly parents) I hope to "shine the light" on this age group with support, resources and understanding.

Lisa: My desire to work with Shine the Light focusing is a deeply personal motivation. As a parent of a teenage daughter, I've been profoundly moved and saddened by the prevalence of teenage suicides and the heartbreaking stories of parents who have lost children to mental health challenges. Witnessing these struggles has ignited within me a heartfelt desire to make a difference and offer support to those suffering. I am committed to leveraging my compassion, dedication and experiences to contribute meaningfully to this vital cause and help create a community where individuals facing mental health issues feel understood, supported and empowered to seek the assistance they need.

SUPPORT AND RESOURCES FOR SPIRITUAL AND MENTAL WELL-BEING

Grief Support on Zoom

First Tuesday of the month, 12-1 PM:
May 7, June 4, July 2

In-Person Grief Support

Last Tuesday of each month, 12-1 PM:
May 28, June 18, July 30

Jewish Family Service Support Groups

Our community partner, Jewish Family Service, helps adults, children and families navigate mental health challenges and coping skills through a variety of support groups. To learn more, visit jfsdallas.org.

Substance Abuse Support for Friends and Families

Thursdays every week from 5:30-6:30 PM in person and on Zoom
Contact for more information and Zoom link:
Freda Heald, fredaheald@yahoo.com

HERE FOR YOU

Temple clergy and staff are available to support our community members navigating mental and physical health issues. Please reach out to us for help if you, a friend or family member is experiencing a crisis or an ongoing issue.

NO BARRIERS

Finances should never be a barrier to participation in Temple life. Confidential financial assistance is available for most Temple events, tuition and dues.

For information or Zoom links, please contact Meredith Pryzant, Director of Member Support,
mpryzant@tedallas.org
214.706.0000, ext. 3802

SHINE *the light*

'You Cannot Do This on Your Own'

Ten years ago, Freda Heald found herself in a place she never thought she'd be: two close family members were in rehab at the same time, one for alcohol abuse and the other for drug abuse.

"I had to figure out my life, and at the time, there was a Jewish Family Service group at Temple that held a weekly series for families of loved ones with addictions."

The support was life-changing for her. Her loved ones continued their own journeys to recovery, with measurable successes. "I'm blessed that my family is doing well now, but there are people that are still struggling."

A kindergarten educator in the Early Childhood Education Center, Freda knew that she wanted to give back to Temple, where she had found such solace. After discussing with Rabbi Debra Robbins and Meredith Pryzant, Director of Member Support, she began a support group for listening, sharing and honesty. The group has met on Thursday afternoons, from 5:30 to 6:30PM, for about five years, and stayed together on Zoom through the pandemic and in-person after pandemic restrictions eased.

The size of the group averages about six to eight people but has included up to 15 at times. "It's not for our loved ones. It's for ourselves, family or friends," Freda says. "If they want advice, we give it by sharing what happened to us. We don't try to fix it. We've been there for one of our members whose son passed away six months ago. This group has been pivotal to their ongoing recovering."

A turning point in her own journey came during her group session when she shared that she could not believe that her family was experiencing this kind of trauma. The facilitator told her: "Believe it because you're there. It doesn't matter who you are or where you come from, that could be you."



Moments like this are when "you finally realize it's OK to be vulnerable and realize you need the help. You cannot do this on your own. In a group, I found that people are just like me and have the same issues, but at first it's hard to realize it."

In addition to the support she's given to others in the group, Freda has made dear friends herself. Creating community in the group has been invaluable.

Regardless of the size of the group, Freda is committed to its purpose and its potential. "If I can help one person, it's worth it."

To learn more about the group, contact Freda at fredaheald@yahoo.com or call her at 972.768.7171.



Celebration and Remembrance

Compiled by Ilana Paikoff

BECOMING B'NAI MITZVAH



Taryn Fitzgerald
May 4
Daughter of Regan and Patrick Fitzgerald
Haggard Middle School in Plano
Tikkun Olam: Autism Speaks



Max Levin
May 4
Son of Lorin and Matt Levin
McCulloch Intermediate School
Tikkun Olam: Harlem Lacrosse



Liliene Van Cleave
May 4
Daughter of Katie and Adam Van Cleave
Melissa Middle School
Tikkun Olam: Jill Stone Community Garden



Sophie Blum
May 11
Daughter of Amy and Richard Blum
Parkhill Junior High
Tikkun Olam: Youth Gymnastics Camp



Hudson Harold Lipp
May 11
Son of Jennifer and Evan Lipp
Brenfield Elementary School
Tikkun Olam: Hunger Busters



William Silberman
May 18
Son of Melanie and Michael Silberman
Greenhill School
Tikkun Olam: Fitness for Kids



Joshua Karno
June 1
Son of Sharon and Michael Karno
Lakehill Preparatory School
Tikkun Olam: CitySquare Food Pantry



Banner Johnson
June 8
Son of Amber Pierce and Sam Johnson
Frankford Middle School
Tikkun Olam: Feed My Starving Children; The Remember Us Project



Lydia Elyse Shapira
June 8
Daughter of Debra and Adam Shapira
Parish Episcopal School
Tikkun Olam: Vickery Meadow Food Pantry



My Special Day: Evah Rosen, March 23, 2024

What I'll remember most is working with some amazing people at Temple. My tutor, Haya Gross, was so easy to work with and just got who I was. Cantor Leslie Niren gave me so much confidence to stand and deliver my d'var Torah. And Rabbi Michael Lewis made everything fun and meaningful. He really helped bring this whole experience together for me and my family. I had the opportunity to honor a lot of friends and family during the ceremony and I got to give them all a big hug on the bimah, which was really special. I attend Studie Williams, which is a DISD school, and I'm the only Jewish kid in my grade. Most of my friends had never been to a bat mitzvah before. I was a little nervous about what they would think about all the Hebrew and the service itself. However, so many of them came up to me and let me know how much they enjoyed it. And I think they all had fun at the party, too.

CONVERSION



Preston Fassel (also see p. 16)

WEDDINGS



Claire Greenberg and Adam Lyon



Katarina Rolik and Jarrod Goldner



Anjelica Ruiz and Stephen Tinnin

BABY NAMINGS



George Andrew Birdwell
Son of Caroline and Matthew Birdwell



Sadie Jean Rosen
Daughter of Greer and Josh Rosen
Granddaughter of Wendy and Stephen Lieman



Annie Drew Chernoff
Daughter of Adrienne Feltman and Adam Chernoff
Sister of Ava Lila Chernoff
Granddaughter of Arlene Jacobs and Allen Feltman



Justin Bo Lubetkin
Son of Ashley Bosse and Jared Lubetkin
Grandson of Donna and Jeff Bosse
Great-grandson of Sara and Samuel Savariego

NEW AND RETURNING MEMBERS

Caroline, Matt and George Birdwell
Brooke, Alex and Winston Boyarsky Pratt
Lee and Shireen Budner
Ann Eadler
Preston Fassel and Kayleigh Overman-Fassel
Jarred Goldner and Katarina Rolik
Beau, Elizabeth and Murray Gould
Mark Greenberg and Charlotte Siegel

Carolyn Helfman
Sandy Horwitz
Linda Kurlancheek
Scott, Lauren, Shea and Leah Lipsky
Aaron Narva, Avery Sorrels and Kay Narva
Bob and Valerie Parham
Adam, Czarina and Vienna Pauska
Courtney Reisman and Kevin Haines

Esther Ritz
Michael, Monika, Landon and Andrew Rubin
Ian Schneiderman & Mary Rae
Celeste Schnitzer
Derek, Linda, Hazel, Rose and John Tarlecki
Chad and Alex Teiber
Sammy Weyser

IN MEMORIAM

Joseph Abrams
Husband of Jean Abrams
Father of Michelle Abrams and Bradley Abrams
Brother of Dorothy Schlessinger
John Stephen Berardi
Father of John Berardi, Anne Leach and Stephen Berardi
David Foland
Father of Ari Foland
Former husband of Erica Bloom Foland
Significant other of Rabbi Amy Rossel
Edward Forest
Father of Kara Forest and Susan Forest
Barbara Friedman
Mother of Lorraine Friedman and Louis Friedman
Donald Friedman
Father of David Friedman, Donald Friedman, Jr. and Ellen Kay
Ken Glaser
Husband of Rena Glaser
Father of Brian Glaser, Garret Glaser and Mitchell Glaser
Stepfather of Elisa Brown and Jonathan Gansell
Alan J. Gold
Husband of Rita Sue Gold
Father of Jim Gold and Mary Lee Broder
Jackie Greenberg
Mother of Stacey Titens, Jeff Flax, Wendy Flax and Doug Flax

Mary Judith Gutierrez
Mother of Joel Archer
Eric Herzog
Husband of Jane Herzog
Father of Rabbi Kimberly Herzog Cohen and Andrew Herzog
Dustin George Jopling
Son of Meredith and Jake Jopling
Grandson of Bonnie and Mike Grossfeld
Richard Lerer
Husband of Sheila Lerer
Father of Joshua Lerer and Kevin Lerer
Gail Nusinow
Mother of Barry Brown and Brandi Brown
Sister of Rhona Streit and Glenda Kaufman
Ladeen Pluss
Mother of Steven Pluss
Lenore Redstone
Mother of Sue Weiner, Robert Redstone, Judy Paletti and Carole Cooper
Alon Norman Revelman
Husband of Ann Eadler
Father of Chris Eadler
Melanie Kusun Rowe
Wife of Roger Rowe
Mother of Avery Rowe Pollock
Sister of Gary Kusun, Michael Kusun and David Kusun

Diane "DeDe" Danburg Statham
Sister of Kerrie Wolfson, Glenda Waldman, Sheryl Jackson and David Danburg
Charles Stern
Father of Steven Stern, David Stern and Sandra Brackenridge
Richard C. Strauss
Husband of Diana Strauss
Father of Staci Strauss, Tania Agran and Jennifer Strauss
Dave Tobolowsky
Father of Paul Tobolowsky
Dr. Jonathan W. Uhr
Husband of Ginger Uhr
Father of Jacqueline Guise and Sarita Uhr
Bronia Weiner
Mother of Marcel Weiner, Sam Weiner and Roslyne Schulman
Ben Williams
Husband of Debra Williams
Father of Sophia Jo Baron and Max Williams
Son of O'Kelley Williams
Brother of Tracey Williams, Tamara Williams and Fred Williams

NEW MEMBER SPOTLIGHT

By Ilana Paikoff

Twenty-three new member households joined the Temple family in March and April. New members Preston Fassel and Kayleigh Overman-Fassel are excited to start participating in Jewish life at Temple after celebrating Preston's conversion. Preston took a few minutes to share some reflections about his own Temple journey. *B'ruchim habaim*, welcome y'all!

Preston Fassel and Kayleigh Overman-Fassel

Tell us about your Temple journey. What drew you to us?

Ever since first grade, I've had a strong sense of myself as culturally Jewish. While researching a genealogy project, my mother explained how her grandparents were Jews from the Pale of Settlement who'd converted to Catholicism to protect themselves when they escaped to America in the early 1900s. In my teens, I began getting more interested in my family's history and feeling an intense connection to Jewish culture, ideas and beliefs. Following geopolitical events in 2016 and especially after the Covid pandemic, I began researching Reform congregations in Dallas-Fort Worth. I was drawn to Temple Emanu-El by its history; I love the idea that so many Jews living in the South have passed through its doors and that it's such a vital and dynamic part of the identity of American Jewishness.

Preston, congratulations on your recent conversion to Judaism. What was that process like?

It was an enjoyable and illuminating experience. I very much enjoyed getting to attend what felt like college courses again. Having Kayleigh attend classes with me, even though she didn't convert, was also especially fulfilling since we first met and fell in love in college. I enjoyed getting to meet so many new people, both teachers and fellow converts, and learn so much more about Judaism.

Are there any Temple programs you are interested in getting involved with?

I'm currently volunteering with the My Temple Story project of the Pollock Family Media Wall. I'd also be interested in continuing to use my professional skills of journalism and prose-writing. Kayleigh recently got involved with the Jill Stone Community Garden.



What keeps you and Kayleigh busy when you're not at Temple?

We're both fascinated by Roman history. During the Covid lockdown, we took advantage of the opportunity to buy a bunch of history books and try to give ourselves our own amateur Classics education. In 2022 we had the opportunity to travel to Rome, Tivoli, Capri, and Naples not only to visit the actual places we'd been reading about for so long but also so that I could research a book project.

Gifts of Memory, Honor and Gratitude



OUR CONGREGATION

Dora Aronson Helping Hands Fund

Distributions by Rabbi David Stern to individuals in need of financial assistance, particularly in dire situations

Memory of Laurie Evans
by Carla Sherman

Memory of Alan Gold
by Sister and Joel Steinberg

by Julie & David Kronick
by Marilyn Fiedelman

Memory of Jackie Flax Greenberg

by Julie & David Kronick

Memory of Eric Liebling Herzog

by Barbara & Dennis DuBois
by Julie & David Kronick

Memory of Louis Malow
by Barbara Toranto

Memory of Margaret Taylor Parks

by Connie Parks
Memory of Jerome Skibell
by Joan Skibell

Anne and Sam Kesner Caring Congregation Fund

Assistance for Temple members through all phases of life, including hospitalization, elder care, military service, mental health challenges and grief

Memory of Laurie Blicher
by Rozelle & Richard Gillman

Memory of Harriet L. Friedman

by Linda & Mike Sheff

Memory of Alan Gold
by Irene & Buddy Raden

Memory of Ken Helfman
by Irene & Buddy Raden

Memory of Eric Liebling Herzog

by Barbara & Marty Mintz

Memory of Dustin Jopling
by Celia Rose Saunders

Memory of Minnie Klibanoff
by Marty Mintz

Memory of Barbara Mintz
by Marty Mintz

Memory of Kace Phillips
by Irene & Buddy Raden

Memory of Harold Power
by Lynne & Mark Rossow

Memory of Lenore Redstone
by Celia Rose Saunders

Memory of Norma Schlinger
by Rozelle & Richard Gillman

Memory of Sid Stahl
by Irene & Buddy Raden

Honor of Rabbi David Stern
by Bobbie & David Repp

Susan Salom Clergy Good Works Fund

Distributions to charitable organizations, individuals in need or community causes by Temple's clergy

Memory of Irwin Alper
by Diane Colton

Memory of Laurie Blicher
by Zola Blicher

by Lynn & Bob Behrendt

Memory of Murray Colton
by Diane Colton

Memory of Evelyn Colton
by Diane Colton

Memory of Laurie Evans
by Dr. Phil Evans

Memory of David Foland
by Dallas Jewish Funerals

by Ettie & Melvin Weinberg

by Judi and Randy Ratner

Memory of Edward Forest
by Kara & Susan Forest

by Rosie Stromberg

Memory of Alan Gold
by Gary Kahn

by Judy & Ron Foxman

Memory of James Hayden
by the Morguloff & Hayden Families

Memory of Eric Liebling Herzog

by Dallas Jewish Funerals

by Donna & David Lester

by Becky & Bruce Wartell

by Caren Edelstein

by Ettie & Melvin Weinberg

by Irene & Buddy Raden
by Sister & Joel Steinberg
by Judy & Ron Foxman
by May Sebel
by Nancy & Richard Fincher
by Linda & Randy Winski

by Rosie Stromberg
by Lori & Bret Gerard

by Jane Herzog, Andrew Herzog, Rabbi Kimberly Herzog Cohen & families

Memory of Dustin Jopling
by Lynn & Jay Staub

by Lori & Trace Ordiway

Memory of Gerald "Jerry" Miller

by Scott Lewis Miller

Memory of Gail B. Nusinow
by Ellen & Lee Salzberger

Memory of Kace Phillips
by Jay Goltz

by Judy & Robb, Lindsay & Zach Steinberg

Memory of Lenore Redstone
by Jan & Tom Timmons

Memory of Sid Stahl
by Joyce & Selly Belofsky

Memory of Charles Stern
by the family of Charles Stern

Memory of Freda Gail Stern
by Jay Goltz

Memory of Richard Strauss
by Phyllis & Ron Steinhart

Memory of Dave Tobolowsky
by Donald R Blum

Memory of Max Edward Tonkon

by Jay Goltz

Memory of Rose Weinberg
by Ettie & Melvin Weinberg

Memory of Bronia Weiner
by Jan & Tom Timmons

Memory of Ben Williams
by Cyndi Heller and Marshal Goldberg

by Wendy & George Palmer

Memory of Dolores Neustadt
by Judy & Robb Steinberg

Memory of Edward Forest
by Kara & Susan Forest

Bat Mitzvah of Hannah Blum
by Michael & Jenifer Blum

Bat Mitzvah Hannah Prager
by Annette & Sam Preger

Bar Mitzvah Hunter Prager
by Annette & Sam Preger

Appreciation of Cantor Vicky Glikin

by Diane Colton
by Katrina & Geoffrey Gross

by Morton Herbert Meyerson
by Judith & Russell Silverstein

Appreciation of Rabbi

Kimberly Herzog Cohen
by Ann Eadler

by Ettie & Melvin Weinberg

Appreciation of Rabbi Michael Lewis

by Morgan & Tommy Garber
by Elaine & Brad Wolken

Appreciation of Cantor Leslie Niren

by Sheila, Kevin & Josh Lerer

Appreciation of Rabbi Debra Robbins

by Pam Lerner Ross
by Arlene & David Steinfield

by Sheila, Kevin and Josh Lerer

Appreciation of Rabbi David Stern

by Malia & David Litman
by Katrina & Geoffrey Gross

by Bonnie and Michael Grossfeld

Appreciation of the clergy team and congregation for their support

by Jane Herzog, Andrew Herzog, Rabbi Kimberly Herzog Cohen & families

Celebration of Samuel Bierner
by Debbie and Howard Haile

Honor of Meredith Pryzant
by Debra & David Friedman

Honor of Rabbi Debra Robbins

by Paul and Judith Tobolowsky

Anniversary of Evelyn & Eugene Fox

by Samuel & Susan Simon

As a contribution
by Morton Herbert Meyerson

by Colette Hyman
by Susan Talve

Bris of Evan Katz
by Fran & Jeff Katz



OUR TEMPLE AND CEMETERY

Rose Marion & Lee H. Berg Building Fund

Upkeep and maintenance of our historic building

Memory of Elyn Crohn
by Helaine Trachtenberg

Memory of Fannie Trachtenberg Green

by Helaine Trachtenberg

Memory of Erich Rosenbaum
by Helaine Trachtenberg

Memory of Esther Rosenbaum
by Helaine Trachtenberg

Memory of Rose Louise Rosner

by Helaine Trachtenberg

Memory of Ike Trachtenberg
by Helaine Trachtenberg

Memory of Joseph S. Trachtenberg

by Helaine Trachtenberg

Temple Emanu-El Cemetery Endowment Fund

Distribution from the Temple's foundation supporting the maintenance and improvement of the cemetery grounds

Memory of Bernice C. Moss
by Terri Hornberger

Memory of Isaac Woolf
by Carol & Larry Tobias

Memory of Beth F. Kahn
by Ethel S. Zale

Dorothy & Henry Jacobus Archives Fund

Support of special exhibits from our Archives

Appreciation of Jeffrey Friedman

by OriAnn Phillips and Family

Appreciation of Rabbi David Stern

by OriAnn Phillips & Scott McCartney and Families

Rabbi Gerald J. Klein Memorial Cemetery Fund

Beautification and improvements of the Temple Emanu-El Cemetery

Memory of Alec Becker
by Arlene Lamark

Memory of Minette Berman
by Morey & Toni Silverman

Memory of Laurie Blicher
by Joan & Malcolm Shwartz

Memory of Marian M. Goldberg

by Julie & Michael Lowenberg

Memory of Maxine Goldman
by Larry Goldman

Memory of Dustin Jopling
by OriAnn Phillips & Scott McCartney

Memory of Ester Rouso
by Isaac Rouso

Honor of Rabbi Debra Robbins

by the Philipson Family

Rabbi Gerald J. Klein Garden Fund

Maintenance of the Klein Garden

Memory of Richard Lerer
by Janice & Arthur Weinberg

Memory of Kace Phillips
by Marilyn Fiedelman

Memory of Charles Stern
by Lynn & Bobb Behrendt

Memory of Dave Tobolowsky
by Judy & Paul Tobolowsky

Marriage of OriAnn Phillips & Scott McCartney

by Marilyn Fiedelman



GENERAL

Temple Emanu-El General Operating Fund

Support of Temple's general programs and events

Memory of Alec Becker
by Jo Ann & Robert Becker

Memory of Eve Gloria Birnbaum

by Marc Birnbaum

Memory of Laurie Blicher
by Diane & Roger Tygier

Memory of Morris Cohen
by Helaine Trachtenberg

Memory of Mel Crohn
by Helaine Trachtenberg

Memory of Charles Feldman
by Helen Feldman

Memory of David Foland
by Sandy & Barry Diamond

by Macki & Paul Ellenbogen

Memory of Bernard Freed
by Diane & Gary Freed

Memory of Barbara Friedman
by Eileen & Brent Ladd

Memory of Alan Gold
by Sandy & Barry Diamond
by Jackie and Steve Waldman

Memory of Eleanor Goodman
by Karla & Larry Steinberg

Memory of Eric Liebling Herzog
by Sandy & Barry Diamond
by Michael L Novick

Memory of Evelyn Hyman
by Robert Hyman

Memory of Dustin Jopling
by Ynette & Jimmy Hogue

Memory of Christian Krippner
by John Robert Cohn
Philanthropic Fund

Memory of Richard Lerer
by Eileen & Brent Ladd
by Ynette & Jimmy Hogue

Memory of Ruth Novick
by Michael L Novick

Memory of
by Michael L Novick

Memory of Kace Phillips
by Fl Lauren & Jason Bender

Memory of Reagan Reece
by Sandy & Barry Diamond

Memory of Eva Rosenstock
by David Rosenstock

Memory of Norma Schlinger
by Rhea Wolfram

Memory of Lorna Sheinfeld
by Debbie & David Sheinfeld

Memory of Helaine Slakman
by Norman & Becky Slakman

Memory of Sid Stahl
by Diane Jennings
by Pam Beck Pluss & Steven Pluss
by Paul & Lee Michaels

Memory of Diane Danburg Statham
by Jan & Tom Timmons

Memory of Eva Steinberg
by Karla & Larry Steinberg

Memory of Marga Steinhart
by Phyllis & Ron Steinhart

Memory of Bernice Steirn
by Wendy & Stephen Lieman

Memory of Dave Tobolowsky
by Tom and Jan Timmons

Memory of Arno Weinstein
by Helga & Gerardo Weinstein

Memory of Ben Williams
by Sandy & Barry Diamond
by Bernie Apter
by Jan & Tom Timmons

Memory of Fritz Wolff
by Helga & Gerardo Weinstein

Memory of Celia Zelen
by Louise Lerner

Memory of Morris Zablotsky
by Janet & Sonny Hershman

Birthday of Martin Schaffer
by Phyllis & Ron Steinhart

Celebration of Samuel Bierner
by Carol & Steve Aaron

Honor of Beverly & Malcolm Bonnheim
by Stuart Owen

Marriage of OriAnn Phillips & Scott McCartney
by Barbara Glazer Rosenblatt
& Randall Lee Rosenblatt
Family Fund

Temple Emanu-El Endowment Fund

Distribution from the foundation supporting Temple's programs

Memory of Dustin Jopling
by Jackie & Steve Waldman

Memory of Kace Phillips
by Jan & Tom Timmons
by Sherrie & Jeffrey Klein
by Marcia Grossfeld

Memory of Helen Weitman
by Laurie Spitz

Birthday of Barbara Buchman
by Lois Wolf

Anniversary of Lori & Trace Ordiway
by Wendy & George Palmer



MUSIC AND PRAYER

Music Fund

Enhancement of Temple music programs

Memory of Inge Bosse
by Donna & Jeff Bosse

Memory of Ron Fiedelman
by Arnie & Ellen Marks

Memory of Lenore Redstone
by Wendy & George Palmer
by Felise Leidner
by Lori & Trace Ordiway

Memory of Felix Schoenfarber
by Donna & Jeff Bosse

Memory of Edward Dunn Snyder
by Jan & Tom Timmons
by Joyce & Joseph Rosenfield
by Sheryl & Gordon Bogen

Memory of Dave Tobolowsky
by Carl Weisbrod

Memory of Bronia Weiner
by Betsy & Todd Teitell
by Wendy & George Palmer

by Barbara & Philip Einsohn

Appreciation of Cantor Vicky Glikin
by OriAnn Phillips & Scott McCartney

Aline C. Rutland Prayer

Book Fund

Purchases of prayer books

Memory of Eric Liebling Herzog
by Wendy & George Palmer



ADULT PROGRAMS

AtID (Young Adults)

Support of Jewish engagement of young adults in their 20s and 30s

Appreciation of Alex Horn
by Lisa Beckerman & Alan Rubin

Katherine F. Baum Adult Education Fund

Support for adult education programs

Memory of David Foland
by Jan & Tom Timmons

Memory of Burt Rosenberg
by Marlene & Richard Marks

Henry D. Schlinger Ethics Symposium Endowment Fund

Support of the ethics symposium

Memory of Norma Schlinger
by Rozanne Kobey



SOCIAL JUSTICE

Hunger Relief Fund

Collection of funds for hunger relief throughout the year, especially during High Holy Days and Passover

Memory of Allen Bogart
by Lynne Bogart

Memory of Rose Bosse
by Donna & Jeff Bosse

Memory of Sam Bosse
by Donna & Jeff Bosse

Memory of Murray Colton
by Joyce & Joseph Rosenfield

Memory of Alan Gold
by Patricia Fagadau

Memory of Eric Liebling Herzog
by Lisa & Jim Albert
by Sandra Goldman

Memory of Keith Mond
by Helen Feldman

Memory of Fannie Rachofsky
by Helen Feldman

Memory of Lenore Redstone
by May Sebel

Memory of Sid Stahl
by Lisa & Jim Albert

Memory of Robert Strauss
by Ilene & Steve Sanders

Memory of Bronia Weiner
by May Sebel

Memory of Sandra Weiner
by Helen Feldman

Memory of Helen Weitman
by Helen Feldman

Bris of Noah Hersch Teiber
by Susan Hoffman & Sam Gottlieb

Disaster Relief Donation

Emergency support for domestic and world crisis

Honor of Nancy Lubar
by Janet & John Eickmyer

Honor of Rabbi Nancy Kasten & Rabbi David Stern
by Janet & John Eickmyer

The Jill Stone Tikkun

Olam Fund
Support of Temple's social justice programs including initiatives, advocacy, projects and lectures

Memory of Polina Vol'fovna Berman
by Sheila & Stephen Stieglitz

Memory of Alan Gold
by Julie & Michael Lowenberg
by Macki & Paul Ellenbogen

Memory of Irving Goldberg
by Julie & Michael Lowenberg

Memory of Eric Liebling Herzog
by Jan & Tom Timmons
by Judi & Randy Ratner

Memory of Dustin Jopling
by Barbara & Dennis DuBois

Memory of Arnold Kurtz
by Cindie & David Kurtz

Memory of Earl Morchower
by Bette & Gary Morchower & Family

Memory of Lillian Stieglitz
by Sheila & Stephen Stieglitz

Memory of Solomon Stieglitz

by Sheila & Stephen Stieglitz

Memory of Bronia Weiner
by Debbie & Howard Haile

Memory of Ben Williams
by Marcia Grossfeld

Memory of Marvin Yost
by David & Cindie Kurtz

Birthday of Lauryn Bloom
by Ilene & Britt Baume

Birthday of Larry Steinberg
by Stuart and Stacy Simon

Priscilla R. Stern Memorial Literacy Fund

Support of literacy projects in the general and Jewish communities

Memory of Lois Bernstein
by Lynn & Mark Bernstein

Memory of Ron Fiedelman
by Stuart & Stacy Simon

Memory of Donald Friedman
by Kim & Avrum Schonwald

Memory of Dustin Jopling
by Suellen & A.J. Rosmarin
by Rabbi Joshua & Debbie Taub
by Kim & Avrum Schonwald

Memory of Isadore Joseph Levitan
by Jody & Mel Platt

Memory of Bronia Weiner
by Lori & Trace Ordiway

Appreciation of Rabbi David Stern
by Ettie & Melvin Weinberg

Social Justice Youth Education Fund

Support of worthwhile educational causes for youth in need

Memory of Alec Becker
by Leslie & Steven Peskind

Memory of Elsa Goldberg
by Julie & Michael Lowenberg

Memory of Eric Liebling Herzog
by Mary Lee & Michael Broder

Appreciation of Rabbi Nancy Kasten
by OriAnn Phillips & Scott McCartney & Families

Appreciation of Temple Staff
by OriAnn Phillips, Scott McCartney & Families

Honor of Richard Pollock
by Suzi & Jack Greenman

Vickery Meadow Food Pantry

Support of food and fresh produce to Vickery Meadow residents

Memory of Sarah Adler
by Annette Corman

Memory of Jack Corman
by Annette Corman

Memory of Margie Landau
by Annette Corman

Memory of Kace Phillips
by Annette Corman

Memory of Edward Dunn Snyder
by Annette Corman

Marriage of OriAnn Phillips & Scott McCartney
by Annette Corman



YOUTH AND EARLY CHILDHOOD EDUCATION

Jeanette & Raymond Israel Teacher Training Fund
Funds for continuing education for YL+E teachers

Memory of Dustin Jopling
by Cathy & Alvin Miller
As a Contribution for Warren Kaman
by Cathy & Alvin Miller

Gina Rosenfield Levy Greene Family Camp Scholarship Fund
Financial assistance to families for Greene Family Camp

Memory of Murray Colton
by Phyllis & Phil Stoup

Memory of Marsha Friedman
by Phyllis & Phil Stoup

Memory of Eric Liebling Herzog
by Susan Regan Donnenfield & Family

Memory of Jack Introligator
by Peggy Pryzant Martin

Memory of Rose Rubenstein
by Mindy & Rick Cohen

Memory of Ila Sue Stone
by Bonnie & Stuart Bazley

Lomdim Project

Support of an open and inclusive community for YL+E children with special needs

Memory of Kace Phillips
by Lori & Bref Gerad

Memory of Dustin Jopling
by Judi & Randy Ratner

Appreciation of Rabbi Debra Robbins
by Lisa Beckerman & Alan Rubin



2024-2025 Season Preview

May 30 | 7PM | Stern Chapel and Online
Register: tedallas.org/events

Join Cantors Vicky Glikin and Hallie Weiner for a special performance and preview of the Music, Arts and Culture Season in 2024-2025!

Be the first to learn about next year's exciting musical season at Temple Emanu-El.

Metz Youth Fund

Scholarships for Jewish activities sponsored by Temple or other Jewish organizations

As a contribution

by Mindy and Rick Cohen
Marriage of Steve Buchalter
 by Jennifer, Sam & Mitch Cassell

Martin & Charlotte Weiss

Religious School Fund

Scholarships for YL+E fees, books and additional expenses

Memory of Murray Colton

by Carol Hirsh & Family
Memory of Marsha Friedman

by Hope & Alan Levine

Memory of Martin Miller

by Carol Hirsh & Family

Memory of Sol E. Perry

by Jenene & Mitchell Perry

Memory of Kace Phillips

by Lynn & Jay Staub

Memory of Alon Norman

Revelman
 by Hope & Alan Levine

Memory of Helen Weitman

by Carol & Brian Bloom

Memory of Celia F. Wolins

by Hope & Alan Levine

Memory of Ned M. Wolins, Sr.

by Hope & Alan Levine

Appreciation of Roz Kaplan

by Congregation Beth Israel
 Vision Planning Committee

Shor/Lowenstein Youth

Scholarship Fund

Financial assistance to families for participation in youth programs

Memory of Alan Gold

by Ruthie and Alan Shor
 by Robin Kosberg and Mark Washofsky

Memory of Eric Liebling

Herzog

by Robin Kosberg and Mark Washofsky

Memory of Sid Stahl

by Robin Kosberg & Mark Washofsky

Bar Mitzvah of Blake Rieter

by Carol & Larry Tobias

Honor of Leo Asen

by Dana & Howard Feldman

Conversion of Preston Fassel

by Robin Kosberg & Mark Washofsky

Early Childhood Education

Center (ECEC) Fund

Support of ECEC programs

Memory of Alan Gold

by Sara & David Gail

Memory of Dustin Jopling

by Naomi Bloom

Memory of Jeannie Kaplan

by Shelley & Richard Hirsh

Memory of Bernard Levy

by Frada & Alan Sandler

Memory of Martin Miller

by Shelley & Richard Hirsh

Memory of Kace Phillips

by Carly & Scott Goldman

Speedy Recovery of Rabbi

Kimberly Herzog Cohen

by Kerrie & Steven Wolfson

Paul Lande Summer Camp

Scholarship Fund

Scholarship for children to attend a Jewish summer camp

Memory of Howard Lipp

by Gaylyn & Howard Lipp

Seth Davidow Family

Youth Fund

Distributions from the Temple Emanu-El Foundation

supporting youth program

Memory of Seth Davidow

by Beverly Horowitz

by Talley Dunn

David B Shalom Religious

Education Fund

Financial assistance for religious education of Temple members

Birthday of Celia Saunders

by Fran & Bob Stiffel

David Jay Leibs Video

Collection

Support to purchase media of Jewish content

Memory of David Jay Leibs

by Arlene Leibs

Memory of Jerry S. Leibs

by Arlene Leibs

Memory of Max Pactor

by Arlene Leibs



WRJ

Funds to support activities of Women of Reform Judaism

YES Fund of Sisterhood

Support of the Youth, Education and Service programs of Women of Reform Judaism

In Memory of Herschal S.

Baum

by Harriet Silverman

In Memory of Eric Herzog

by Susan Cooper

In Memory of Lenore

Redstone

by Howard & Debbie Haile

As a Contribution

by Miriam Cohen

Freda Gail Stern Fund

In Memory of Diane "DeDe"

Danburg

by Celia Saunders

In Memory of Alan Gold

by Women of Reform Judaism

In Memory of Phyllis Somer

by Sue and Marcel Weiner

Birthday of Celia Saunders

by Wendy Palmer

Women of Reform Judaism

In Memory of Phyllis Somer

by Sue and Marcel Weiner

Birthday of Celia Saunders

by Wendy Palmer

ANNUAL FUND SPOTLIGHT

By Ilana Paikoff

Kathy and Jacques Aferiat



Tell us a little about your story.

Jacques: I was born in Oran, Algeria where less than 5% of the population was Jewish. In 1955, my father's store and our home were set on fire by terrorists wanting independence from France. In 1959, my family was able

to flee with minimal belongings to the United States. My uncle from New York helped us relocate and I started my American life at age 12 in Long Island. I quickly had to learn both English and Hebrew to have my bar mitzvah ceremony. I went to college in Utica for two years and then went on to school in Buffalo, where I met my wonderful wife, Kathy. We got married in 1969 and had our two children, David and Nicole, when living in Buffalo. My job in hospitality took our family from Buffalo to Memphis, Tennessee and then to Dallas, where we've been for 40 years now.

Kathy: My story is a little less exciting (ha!). I grew up in Brooklyn, New York. As soon as I met Jacques at one of his fraternity get-togethers, I seemed to just follow him around the country. We have two children and four of the most amazing grandchildren in the world. Our son, David, moved to Atlanta but our daughter Nicole lives here in Dallas.

Why Temple Emanu-El?

Kathy: We joined almost immediately after moving to Dallas. We had amazing experiences with the synagogues we were a part of in Buffalo and Memphis and were excited to see if we could find a similar place in Dallas. I was raised Catholic and converted to Judaism in Memphis 11 years after we got married.

I loved Jacques' family and adored their Jewish customs and traditions and I wanted so badly for my children to experience the love of Judaism he felt growing up.

Jacques: We also felt the need to join quickly because our daughter, Nicole, was coming of age to celebrate her bat mitzvah.

What activities have you been involved in over the years?

Kathy: I joined the choir after the High Holy Days in 1984, which means that this fall, I will have been in the choir for 40 years! I've also been a part of Women of Reform Judaism. I am a docent at Temple; because of my early Christian background, I can relate to the schools and churches who want to know more about Temple. I like to light a candle of understanding, especially with the rise of antisemitism, so that people can gain a positive view of Judaism and all it has to offer.

What inspires you to give to Temple?

Jacques: We want to invest in the future of Temple. Every single thing that Temple does — including staff, programing, support and all of the other infinite resources Temple offers — doesn't come cheap. We also, of course, love supporting the Music, Arts and Culture program because of Kathy's love of music.

Kathy: We really love Temple. It is our spiritual home and want others to feel the love we put into Temple and get out of Temple. We also understand that what we have at Temple Emanu-El is not what other people have in other parts of the country. We must treasure Temple as a gift.

CREATING
possibilities
TOGETHER 2023-2024
ANNUAL FUND

The Annual Fund is Temple's highest fundraising priority. There are many ways to make a gift. As always, thank you for your generous support.

Scan the QR code or visit our webpage at tedallas.org/give/annual-fund to make your gift online.

You can also text **gift2TEAnnual to 91999** to give by text message





Off and Running!

CONGRATULATIONS TO THE ECEC GRADUATING CLASSES OF 2024

PRE-K

Ariella Adelman	Dalton Hosley	Jackson Ryan
Julian Aguilar	Avery Iodice	Avery Schanzer
Remy Amir	Sophie Jester	Kaveh Shamsa
Max Ashton	Idris Karim	Emi Siegel
Lev Benson	Zayd Kassam	Levi Skolnick
Simon Berman	Drew Klein	Nova Spradling
James Campfield	Ezra Leffler	Jameson StClair
Olive Chen	Elinor Litterat	Eve Stich
Joseph Cohen	Sophie Lotz	Roman Stinnett
Archie Cunningham	Bryanna Luterman	John Tarlecki
Austin Dahn	Roni Margalit	Ari Tzivoni-Shavit
Fred Davis	Gabriel Markus	Viktoria Valkoun
Stella Feldman	Mila Mazur	Elisa Ward
Eli Field	Charles Molotsky	Zachary Weaver
Monroe Franklin	Jack Muse	Marius Weigert
Claire Goodman	River Nemes	Aiden Weinberg
Leonardo Haidenberg	Jack O'Byrne	Addison Weissberg
Lauren Hancock	Cohen Pokorney	
Asher Hirshman	Delilah Quintero	



KINDERGARTEN

Namir Alam	Frank Robertson
Benjamin Canete	Evelyn Rogers
Greyson DeVito	Parker Sajjani
Ruairi Gordon	Elliot Segall
Reign Hamidi	Mila Slavin
Scarlett Lane	Shiloh Snyder
Alessa Litchi	Gavin Steinberg
Agustin Macedo	Oliver Teplin
Lincoln McCoy	Jack Topletz
Ramsey Meghani	Max Valkoun
Rachel Ragovis	

From Us to You

THE CONFIRMATION CLASS OF 1959 SHARES ITS WISDOM WITH THIS YEAR'S CLASS

In 1959, Barbie was a brand new doll, not a movie, and the United States started out with only 48 states, admitting Alaska and Hawaii into the union at year's end. At Temple, the new building at Hillcrest and Northwest Highway was only two years old when the Class of 1959 celebrated Confirmation. The class has stayed in touch over the years, and in April, held a 65th reunion at Temple. Three alumni shared their reflections with the Class of 2024. L'dor Vador!



1: Stephen Lerer | 2: Suzi Flaxman Greenman | 3: Steve Levy

To the Confirmation Class of 2024

When I think of Temple's impact, I think of a stake in the ground. It gave me the grounding that I'm Jewish and part of a supportive and historic community. That was my orientation and it helped clarify and guide me in many important junctures in my life. After Temple, wherever I went, I knew I came from that stake.

Stephen Lerer

When I think of the impact Temple Emanu-El has had on my Jewish life, two phrases come to mind. The first is "moral compass." Whenever I have doubts or am confused, I turn to lessons I learned at Temple or heard at a Friday night sermon. The second is "sense of community." Imagine that 65 years from now, you will be gathering with friends you made at Temple Emanu El.

Suzi Flaxman Greenman

It's a really big world out there. There is great comfort in holding on to lifelong relationships, both with your Temple classmates and with the institution itself. My wife and I were both confirmed here, as were parents and grandparents on both sides. Our son is a member. When his two daughters had their confirmations and bat mitzvahs here, that fifth-generation sense of continuity gave us all a wonderful feeling of community and belonging. It is something to cherish.

Steve Levy



CONFIRMATION CLASS OF 5784 | 2024

Emma Kate Bassman
 Aaron Lyndon Chaput
 Talia Amy Fisher
 Sandler Lucy Fitzgerald
 Andrew Jordan Gerstenhaber
 Evan Norman Israel
 Peyton Olivia Johnson
 Brady Asher Karp
 Chloe Etana LaGrone
 Jack L. Levy
 Sarah S. Menendez
 Sarah Alexandra Moskowitz

Ollie David Morgan
 Lulu Loeb
 Zoey L. Olinick
 Mason Erasmo Pedroza
 Saul S. Rosen
 Charlotte Juliette Rosuck
 Jeffrey M. Rubenstein
 Sallie Frances Sachs
 Jacob S. Savariego
 Sadie Lane Spett
 Henry G. Utay
 Zac S. Yarkin



THEN AND NOW: 1959 & 2024

Then

Barbie: The toy doll invented by Ruth Handler of Mattel debuts at the International Toy Fair in New York City.

Music: Tamla Records, later to become Motown, is founded by Berry Gordy in Detroit, Michigan.

Art: Solomon P. Guggenheim Museum, designed by Frank Lloyd Wright, opens in New York City.

United States: Alaska and Hawaii are admitted as the 49th and 50th states.

Sports: The American Football League is founded, with the Dallas Texans as the founding team. A year later the National Football League would start the Dallas Cowboys.

Temple: The “new” Temple building was just two years old, with many in the Confirmation class having attended the dedication.

Now

Barbie: The blockbuster film wins an Oscar for best original song.

Music: Taylor Swift’s Eras Tour is the #1 tour worldwide and in North America.

Art: The Dallas Museum of Art selects a Spanish architecture firm to renovate the Edward Larrabee Barnes-designed building that opened in January 1984.

United States: A total solar eclipse cuts a wide swath across 15 states as skies darken at midday.

Sports: The Texas Rangers begin the 2024 season as the reigning World Series champs.

Temple: TE150, a 15-month celebration of Temple’s 150th year, concludes with Rededication Shabbat and sealing of a time capsule.

“And the land shall yield its produce...”

EZEKIEL 34:27-28

Now in its 12th year, the Jill Stone Community Garden continues to nurture its neighbors in Vickery Meadow with fresh, healthy vegetables, and to nurture the souls of its most dedicated volunteers.

Throughout the prolific growing season this spring, Temple’s 25 volunteers and 15 Master Gardeners have been hard at work on Sunday and Wednesday mornings.

Three gardeners shared the impact of the garden on their lives.



Don’t Call, He’s Busy on Sundays!

“When I came to Dallas, newly retired, I sought ways to live an active and engaged Jewish life. And so, for the last five years, I have studied Talmud on Wednesday morning, studied Torah on Shabbat morning, and worked in the Temple community garden on Sunday morning. Now our community garden has grown to be an urban farm. We harvest over three and one-half tons of organically

grown vegetables in a calendar year. I like getting my hands dirty. Volunteering is serving the community; it is healing a broken world; it is growing healthy food and putting it on the tables of families who do not have healthy food to eat. Working on the farm fills me with pride; it gives my life purpose and meaning. It wears me out while putting a smile on my face. I am proud to say that I am not available on Sunday mornings... I have a standing commitment to feed the hungry and make the world better. I wish more folks would join me.”

Rabbi Joshua Taub



Blooming Inspiration

“The work we do growing fresh organic vegetables is truly a mission that brings together Temple families, master gardeners, neighbors and volunteers. We have a wonderful community of dedicated gardeners who understand the food we grow is providing essential produce for families in need. Recently after retirement, I joined the garden and

have developed friendships with people who inspire me. I am very grateful to be a part of this community.

Wayne Wilson



Y’all Come!

“Everyone is invited to join us, no experience necessary. Believe me when I say that the garden is a magical place that lifts the spirits. We also welcome children accompanied by an adult. You don’t need to bring anything but yourself and your favorite pair of gloves. We have all the tools you could ever use.”

Kay McInnes

A Trip to Remember

By Livia Stevenson

Teen Emanu-El brought together nine 8th and 9th-grade students in February for a first-of-a-kind trip to Los Angeles. They enjoyed iconic LA activities such as a Shabbat hike to the Hollywood sign and a day at Universal Studios. They also experienced the important work of some local social justice organizations such as Homeboy Industries, the largest gang rehabilitation and re-entry program in the world, and Beit T'Shuvah, a Jewish congregation that works to help addicts live in recovery. Three attendees shared the trip's impact with The Window.

Leila Davis: *(top photo, fourth from left)* It was such an eye-opening and fun experience. I had many unique opportunities for which I am so grateful. I learned about drug addiction and rehabilitation at Beit T'Shuvah, heard about the importance of community and love at Homeboy Industries, tried new and delicious foods, and bonded with my friends during our day at Universal. I had an amazing time and made memories that will last forever.

Nate Pass: *(from top, second photo, second from right)* When I heard Temple was hosting a first-of-its-kind trip to LA for the 8th and 9th grade class, I knew I wanted to go. When I saw the itinerary, I thought "oh, this will be really different!" but the trip was so much more than that. I learned about the troubled beginnings of one of the staff members at Homeboy Industries. We heard from a recovering addict at Beit T'shuvah. Hearing stories from people about their lives and how drastically they have changed showed me how these organizations turn people's lives around and how incredible they are. We did so much more than just that, including a trip to Universal, a special Shabbat service, a Shabbat morning hike and a visit to the Museum of Tolerance. My favorite part was going to the Museum of Tolerance, as it showed things I had never seen or heard of before and opened my mind to a new way of coping with the horrible ways in which humans treat each other. Getting to go on this trip was meaningful to me and I am so grateful I had this opportunity.

Stephanie Weiner: *(from top, third photo, far left)* I had the wonderful opportunity to co-chaperone with Rabbi Lewis! This was an enriching experience blending social justice and fun-filled activities. We explored the vibrant city, with a highlight being our visit to Universal Studios. We also carved out time for spiritual reflection while hiking on Shabbat morning at Griffith Park Observatory (what an amazing view)! I really enjoyed my time experiencing LA from a new lens and learning along with the students!



ARTzenu

Our Art | Our Land



Lavi Lipshitz, ז"ל,
IDF soldier and photographer

Photography exhibit April 30-May 13

Lavi was a 20-year-old staff sergeant in the IDF who captured life on the front lines through his camera and social media accounts. He was killed on Oct. 31 by a Hamas missile in the northern Gaza Strip. His father, Nitzan, has made his photographs available for the world to witness and we are proud to have them on display at Temple leading up to Yom HaZikaron, Israel Remembrance Day.

Scan the QR code to learn more about Lavi from an interview with his father and sister taken during the shiva period following his death.



Yom HaAtzmaut *Israel Independence Day*

All-In Shabbat
Friday, May 17 | 6PM

Join us for a Shabbat evening for the whole family! Start off with a family friendly service followed by a congregational dinner and activities for kids.

Register: tedallas.org/events.



PAMELA AND STEVEN PLUSS GALLERY

The "Rediscoveries" exhibit of treasured works from Temple's collection will close on Thursday, May 10. The new exhibit, "Israel Illuminated," is being offered as part of Temple's Yom HaAtzmaut celebration and features works with an Israel theme or by Israeli artists. Please join us for an opening reception at the early oneg at 5PM on May 17, right before All-In Shabbat.



A Yom HaAtzmaut Concert BENEFITING ISRAEL

NOA



ALSO STARRING

Gil Dor & Special Guest Grammy-Winning Pianist Ruslan Sirota

SUNDAY, MAY 19 | 4PM

Stern Chapel and Online

Celebrate Israel's 76th Yom HaAtzmaut with a benefit concert featuring Achinoam Nini, aka Noa, an international Israeli concert and recording artist, songwriter, percussionist and public speaker. Joined by her longstanding musical collaborator Gil Dor and Grammy-winning pianist Ruslan Sirota, the trio will help us to connect to Israel, celebrate our spiritual homeland and raise funds to support Israel. All proceeds from the concert will be donated to Kibbutz Zikim, Dallas partnership community; Kehillat YOZMA and Kibbutz Nir Yitzhak.

Tickets: tedallas.org/noa

Premium seating: \$180

General admission: \$36

Children under 18: \$18

Online access: \$36

Thank you to our Community Partners!

Aaron Family JCC | AJC Dallas | Anti-Defamation League Texoma Region
Congregation Beth El of Tyler | Congregation Shearith Israel | Dallas Jewish Historical Society
Hillel at SMU | Jewish Federation of Greater Dallas | Legacy Senior Communities | Temple Shalom



*Confirmation
Class of 1959
Reunion*