

The Window

Rooted in Justice

PARTNERSHIP WITH DISD

Purim – Taylor's Version

Passover 2024

Reflections from
Leadership Trip to Israel



CONTENTS

PRAYER AND SPIRITUALITY

A Message from Rabbi David Stern	3
In the Torah	4
MAC Artist: Rabbi Deborah Sacks Mintz	4
Passover at Temple	5

SOCIAL JUSTICE

Taking the Hill	6
Making the World a Better Place	8
Trees and Relationships Grow through TE150 Projects	9
Up Front for Justice	10



Temple teens join U.S. Rep. Beth Van Duyne on the roof of the Longworth office building in Washington, D.C.

LEARNING

Scenes from Our Schools	23
-------------------------	----

About the Cover: Students at Dr. MLK Jr. Arts Academy are growing an indoor garden through a partnership with TE150s's Social Justice Committee, United to Learn and DISD

ISRAEL

Witnesses to Heartbreak and Hope	24
----------------------------------	----

COMMUNITY

Celebration and Remembrance	11
152nd Annual Meeting	15
Purim 2024 (Taylor's Version)	16
A Visit with WRJ President	
Robin Nathanson	18
Tributes	19
Annual Fund Spotlight	22



Temple
Emanu-El

Founded in 1872
8500 Hillcrest Road | Dallas, Texas 75225
214.706.0000 | tedallas.org

Temple President
Bob Krakow
Executive Director
Meredith J. Fried

Clergy
Rabbi David E. Stern
Rabbi Debra J. Robbins
Cantor Vicky Glikin
Rabbi Amy Rossel
Rabbi Kimberly Herzog Cohen
Cantor Leslie Niren
Rabbi Michael Lewis

Department of
Congregational Advancement
Sandy Diamond, Senior Director

The Window
Connie Dufner, Senior Director of Communications
Ann Wilson, graphic designer
Livia Stevenson, writer
Ilana Paikoff, writer

Sea Crossings and Everyday Miracles



Rabbi David Stern

When Pesach comes at the end of April (this year's first seder is on April 22), we will once again gather around our seder tables to tell the story of a miracle — the parting of the Red Sea and how the Torah describes our ancestors' passage to freedom: "And the Israelites went into the sea on dry ground" (Exodus 14:22).

You can understand the notion of the Passover miracle in myriad ways. Maybe the miracle, for all the attempts to give it a naturalistic interpretation (a strong wind created a furrow in the waves), is the straight-up wonder of witnessing the seemingly impossible. Maybe the miracle is the fact that slaves can become free. Maybe the miracle is the will it takes to leave the familiar, even when the familiar is degrading. Maybe the miracle was the courage required, in the imagination of the midrash, for a leader named Nachshon to step into the sea before the waters had parted, and through that act of bravery and hope, make the parting possible.

The Hasidic sage known as the Netivot Shalom (R. Shalom Noach Berezovsky, 1911-2000) sheds a different light on the crossing, and maybe on our Passover seders as well. He is interested in the phrase "through the sea on dry ground," and specifically what it says about the people's faith. He notes that in Exodus 15, the people sang a song of gratitude for God's mighty act of salvation. He recognizes that while shouting for joy in response to a saving miracle is worthy, it is not exactly a spiritual accomplishment.

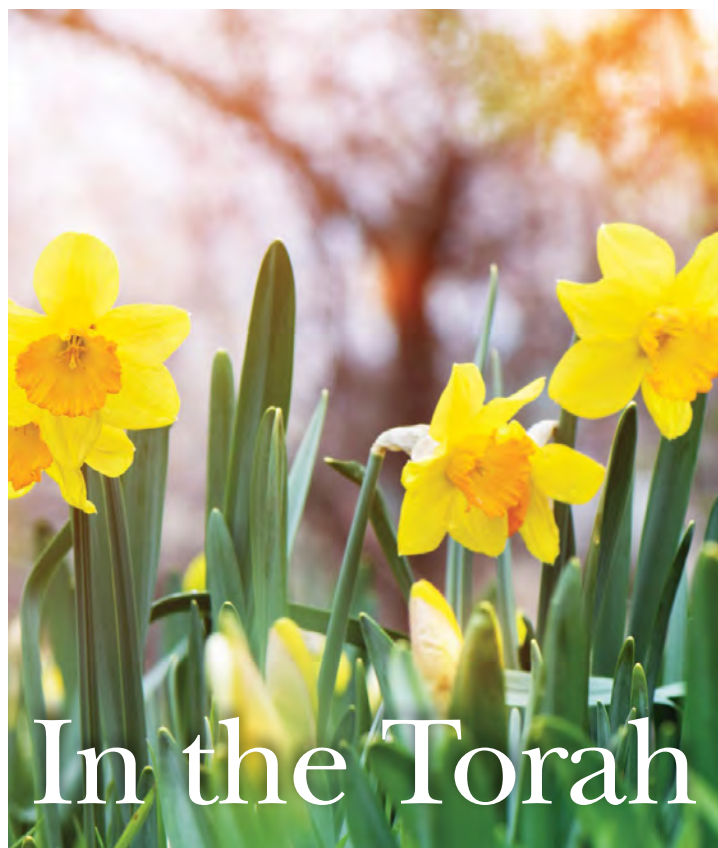
The real spiritual achievement, he says, comes when you can sing in gratitude not only when you are "in the midst of the sea," witnessing a saving miracle, but when you are on "dry ground": that is, on a mundane and ordinary day. That, he says, was the spiritual achievement of the generation of the Exodus — they could sing in the sea, when the miracles were resounding and obvious; and they could sing on dry ground, seeing the miraculous in the everyday.

So now I will think of our seder tables differently. Now I will think that the young voices asking the four questions, or the slightly inebriated table-pounding at Dayeinu, is not just about the miracle, it is the miracle. All the ordinary "dry ground" stuff: a family recipe on a creased index card, the wine and charoset stains on the Haggadah, a new parent or a young adult making a seder for the first time, a senior finding a place at a new table of welcome and friendship, a family gathering in similarity and difference. And all of it the platform for our stubborn redemption story of dignity and hope, even in a world whose tragedies threaten to render that story and its meaning mute.

In Exodus 12:24-27, the Torah pauses in its narration of the escape from Egypt to prescribe the first Passover observance, a celebration of freedom imagined when the people are still in slavery. The Torah forecasts that when the people eventually enter the land and celebrate the exodus, their children will ask, "What do you mean by this ritual?" In response, we are to tell them how God freed us from bondage. Upon hearing these instructions, the people bow low in homage.

Rashi offers this remarkable teaching on the verses: the people did not bow low out of gratitude for the redemption from slavery. They bowed low because the instruction meant that there would be children around in the future to ask about it. The story of the plagues and the parting sea and the passage from degradation to dignity — that's a miracle "in the midst of the sea." But the fact that there will be some kid at some seder table to ask a question about it, that there will be future generations to laugh and sing and make Judaism their own, that is a miracle "on dry ground," and maybe the greatest miracle of all.

In his reflection on the grand parting of the sea, the Netivot Shalom challenges us to prepare for Passover with our eyes open to the miracles that surround us every day. The awareness of miracles on dry ground: the warming sun as springtime begins, a garden in bloom, a call from a friend when we need it most, the growth of a child, a memory which brings both sadness and healing. At our seder tables this year, may we sing in thanks for it all.



In the Torah

Weekly Readings for March/April 2024

March 1 – 2: Ki Tasa, Exodus 30:11 – 34:35
Shabbat with visiting MAC artists Galeet Darshasti and Divahn

March 8 – 9: Vayak'heil, Exodus 35:1 – 38:21
50+ Shabbat: Honoring those who have been adult members or married for 50 years or more

March 15 – 16: Shabbat Sh'kalim (the first of five special Shabbatot before Pesach), P'kudei, Exodus 38:21 – 40:38

March 22 – 23: Shabbat Zachor (the second of five special Shabbatot before Pesach), Vayikra, Leviticus 1:1 – 5:26

March 29 – 30: Shabbat Parah (the third of the five special Shabbatot before Pesach), Tzav, Leviticus 6:1 – 8:36

April 5 – 6: Shabbat HaChodesh (the fourth of the five special Shabbatot before Pesach), Sh'mini, Leviticus 9:1 – 11:47

April 12 – 13: Tazria, Leviticus 12:1 – 13:59
Shabbat with visiting MAC artist Rabbi Deborah Sacks Mintz

April 19 – 20: Shabbat HaGadol (the last of five special Shabbatot before Pesach), M'tzora, Leviticus 14:1 – 15:33
Shabbat including the Temple Emanu-El Choir

April 26 – 27: Pesach

APRIL 12-14, 2024

Rabbi Deborah Sacks Mintz

Experience the soulful spirituality of Rabbi Deborah Sacks Mintz, a performer, composer, educator and leader in building community through singing. In workshops, song circles and prayer experiences, Deborah helps communities and individuals connect to their deepest selves. She has collaborated on more than two dozen recordings and has released two solo albums. **We can't wait to welcome Deborah to Temple Emanu-El!**

Shabbat Evening Service

Friday, April 12 | 6:15PM | Stern Chapel and Online

Shabbat Morning Service

Saturday, April 13 | 10:30AM | Lefkowitz Chapel

Concert

Sunday, April 14 | 4PM

Join Rabbi Deborah Sacks Mintz and her soulful musical partners for an evening of rich harmony, deep groove and heart-opening communal song. Through her tapestry of lush vocals and rhythmic sounds, Deborah invites all to raise their voices in this participatory concert — rooted in traditional texts, contemporary melodies and the meditative power of the nigun, the wordless spiritual song.



MAC
MUSIC | ARTS | CULTURE



PASSOVER

2024

Celebrate renewal and our people's many journeys to freedom — from narrow paths of enslavement, war and heartbreak to expansive places of wholeness and peace.

COMMUNITY

Sh'ma Emanu-El All-Groups Gathering

April 12 | 5PM

Join us before the Shabbat evening service for a pre-Passover gathering of Sh'ma Groups. Come with your group, meet people in other groups and have a chance to get to know the Sh'ma Core Team.

Jewish Community Relations Council 10th Annual Interfaith Seder

April 17 | 6:15PM | Congregation Shearith Israel

The 10 annual interfaith seder will feature Rabbi David Stern, Cantor Vicky Glikin and other Dallas faith leaders. Watch Temple communications for more details.

YL+E Chocolate Seder for Kindergarten to 6th Grade

April 28 | 12:30PM | Weiss Youth Wing

Learn about Passover and then enjoy a seder featuring chocolate! Lunch will be provided and pickup will be at 2PM in the Youth Wing. Register: tedallas.org/events

PREPARATION

Taste of Seder

April 22 | 5PM | Zoom

Rabbi Michael Lewis will lead an online "Taste of Seder," with candle lighting, sharing the first cup of wine, blessing the matzah, engaging in some Passover learning and singing our favorite seder songs as we welcome the festival of Passover.

Register: tedallas.org/events

PRAYER

Morning Festival Service

April 23 | 10:30AM | Stern Chapel

With Rabbi Debra Robbins and Cantor Vicky Glikin

Morning Festival Service with Yizkor

April 29 | 10:30AM | Stern Chapel

With Rabbi Michael Lewis and Hallie Weiner, Cantorial Intern

AT HOME

Haggadah Lending

Haggadot are available to borrow from the Temple Emanu-El library. For more information and to arrange pickup, contact Anjelica Ruiz, Director of Libraries and Archives, aruiz@tedallas.org

Seder Guests

From Abraham and Sarah's generosity along their desert journey to our homes here in the DFW area, hospitality remains a central value in Judaism. At Temple, we strive to live out Abraham and Sarah's example at our Passover seders and at all seasons. If you are looking for a seder to attend or have a seat or two open at your table, please be in touch with Tal Drori at tdrori@tedallas.org to make arrangements to be a guest or a host.

Israel

Our hearts are very much with Israel at this time of loss of freedom for the hostages. Check Temple communications for materials to enhance your seder with an Israel focus.

OTHER OPPORTUNITIES

Donate Grocery Bags

In the Passover spirit of making sure nobody goes hungry, please support our partners at Vickery Meadow Food Pantry by collecting paper, plastic and reusable bags used for delivery to food pantry guests. Please drop off your bags by our security desk by April 29.

Mental Well-Being

The Blue Dove Foundation, an organization that addresses mental illness and addiction in the Jewish community and beyond, has provided resources to add wellness into your Passover story. Scan the QR code to view the resources online.





Temple Emanu-El's L'Taken delegation poses together in front of the US Capitol (Top row: Mike Sims, Hank Utay, Jacob Savariego, Brady Karp, Rabbi Michael Lewis. Bottom row: Chloe LaGrone, Evan Israel, Jeffrey Rubinstein, Sage White, Mason Pedroza, Saul Rosen, Aaron Chaput, Andrew Gerstenhaber, Megan Sims)

Taking the Hill

By Ilana Paikoff

Museum-hopping, lobbying and some impressive sightseeing were all on the itinerary for 11 Confirmation students who traveled to Washington, D.C. in January on the annual L'Taken seminar of the Religious Action Center of Reform Judaism.

The students traveled with Rabbi Michael Lewis; Megan Sims, Director of Youth Engagement and her dad, Mike Sims, a Temple past president and longtime Confirmation teacher.

In their own words

From connecting to students from other synagogues to seeing the sights in D.C. to the insider's look at government, three attendees shared their positive experiences about the trip.



Teens prepare their speeches to lobby on Capitol Hill.

Brady Karp, 16: I think this trip has taught me a lot about myself. I have also gotten closer with a lot more friends and it has gotten me closer to my Jewish identity and the community. I feel like I truly have trusted adults at Temple who I am able to talk to about any issues I have.

Chloe LaGrone, 15: I think L'Taken's ability to get you to form more connections through its different members is unique. My chance experience with another water polo player and bonding with the other queer members of the trip was very refreshing for me. Having dinner in Georgetown with my friends was my favorite part of the whole trip and helped me imagine what a college experience might look like in a college town. Meeting with U.S. Representative Collin Allred's staffer during our lobbying session provided wonderful insight into our governmental system!

Mason Pedroza, 15: It was interesting to see the government area of D.C. and look at all the buildings. It was also nice to see how the government works from the inside. Going to Georgetown and getting a feel for the city was also very fun.

All in the family

For the chaperones Megan and Mike, the trip had an added layer of meaning.

"I went as a participant with my dad 12 years ago, and it was so special to go back as chaperones together," says Megan.



Temple teens lobby members of U.S. Sen. Ted Cruz's staff.



Temple Emanu-El teens lobby U.S. Rep. Beth Van Duyne on aid for Israel and protections against antisemitism.

Making the World a Better Place

Our social justice footprint deepens with significant projects throughout Temple and Dallas

In a sunlit South Dallas school hallway, just blocks from the site of the third Temple Emanu-El building, the seedlings of more than 150 years of history bloomed yet again — this time in the hearts of students tending an herb garden.

Middle schooler Zuria Hernandez is president of the garden club at Dr. Martin Luther King Jr. Arts Academy. “I have learned we can grow plants not only in soil but also water.”

She is one of the keepers of the hydroponic water tower donated to the school through a partnership with Temple Emanu-El and United to Learn. The school is one of two participating in the first year of a TE150-inspired social justice project designed to build bridges between schools and communities through school gardens.

The other project, which has just begun, is an outdoor garden at McShan Elementary School. A volunteer day will be held on April 14 to create a washing station, plant new beds and other activities.

At MLK Arts Academy, the young gardeners pictured at right and their teacher, Tiffany Walker, joined with Kaitlin Prieur of United to Learn and Temple’s team of Julie Weinberg, Mindy Kobrin (with son Jack), Sally Rosenberg (not pictured) and Erica Matsil, Director of Young Adult Engagement and Social Justice, to dedicate the new tower. The excitement, pride and gratitude for the partnership was palpable in the hallways one January morning as the students showed off their thriving herbs.

The ribbon-cutting held that day was one key aspect of a multifaceted social justice effort, Tzedek Emanu-El, spearheaded by the TE150 Social Justice Committee in partnership with Temple staff and consultants.

“During TE150, we tried to focus our efforts both within our walls and beyond our walls,” says Julie Weinberg, the TE150 social justice chair and a longtime lay leader. (See page 10.)

Tzedek Emanu-El is incubating in Youth Learning + Engagement this year with the intent of creating a streamlined approach to social justice that will reach all congregants. Examples include activities such as delivering food to North Dallas Shared Ministries; deciding how to allocate tzedakah funds; and the selection of two madrichim, Hannah Greenberg and Michelle Leybovich-Glikin, to work with students on social justice.



L-r: Mindy Kobrin, Jack Kobrin, Erica Matsil, Diana Reyes, Tiffany Walker, Julie Weinberg, Zuria Hernandez and Kaitlin Prieur at MLK Arts Academy.



L-r: Kaitlin Prieur, Tiffany Walker, Garden Club President Zuria Hernandez, Jack Kobrin, Mindy Kobrin, Erica Matsil and Julie Weinberg cut the ribbon to welcome the new hydroponic garden.

"We work together to try and craft current and entertaining activities to get the kids involved in our community," says Hannah. "For me social justice means helping my community and also leaning away from ignorance toward the issues of my neighbors. I think the best thing one can do is lend a helping hand and I try to do that as much as possible!"

Another student, Evah Rosen, attended a Tzedek Emanu-El program by Erica Matsil on challenges faced by neighbors in our community.

"I learned about a girl named Rebecca who just came here from Ukraine with her family to escape the war. Our group brainstormed organizations that could help Rebecca and her family to get back on their feet. This project really had an impact on me because Rebecca was about my age but had been through so much. I realized that as a community we have the ability to really make a difference in the lives of people who need our help."

The projects described by Hannah and Evah point to a growing connection between learning and doing. "We do a lot of different social justice work at Temple, but we thought we could do a better job of corralling it and making it more unified throughout the congregation," says Julie. "The idea was that if we had an overall social justice framework, we could build something more cohesive. That was the within our walls idea."

The "beyond our walls" aspect of the launch of Tzedek Emanu-El was more nuanced, Julie says. "The deliberate desire from leadership was that the TE150 social justice legacy should be a big-picture, ongoing, take-it-into-the-future effort, rather than a one-off mitzvah day."

After much discussion and thoughtful research, the garden project became a reality. Temple was able to provide funding and garden expertise, through our own experience with a community garden, and United to Learn had relationships with DISD to help find the right schools with teachers willing to take on the project. "It is a partnership, not prescriptive," says Julie.

"The way we hope it will work is that Temple can be as involved and volunteer-heavy as we want to be," says Julie. "If we have enough volunteers to be in the schools every month, we can do that. But if we don't it will still flourish through the work of the teachers and students."

To volunteer, contact Erica Matsil at ematsil@tedallas.org



TE150 LIVE: THE GREENING OF DALLAS



The TE150 social justice work also included another form of building for the future — the planting of 50 trees in Orbiter Park. The February effort was a partnership among Temple, the Texas Trees Foundation and Dallas Parks and Recreation. The family of Christy and Adam Blumenfeld generously provided funding for the event.

"The generous gift from the Blumenfeld family, in honor of Temple's sesquicentennial, made this significant social justice outreach possible," says Leslie Krakow, co-chair of the celebrations team of TE150. "Continuing a long tradition of making a difference while keeping Jewish values at heart, the trees will help reforest and beautify Dallas' aging urban canopy. New trees help mitigate urban heat and create a greener and healthier local environment for us all."

DOLLARS MAKE A DIFFERENCE

Below are agencies that received Temple gifts of \$5,000 each from our High Holy Days Hunger Relief drive.

Austin Street Center
The Bridge
Family Gateway
Jewish Family Service
MAZON
North Dallas Shared Ministries
North Texas Food Bank
Vickery Meadow Food Pantry
VNA Meals on Wheels
Vogel Alcove

Up Front for Justice

Julie Weinberg has worked thoughtfully and creatively on visionary efforts for TE150 and into the future



Your projects as chair of the social justice committee for TE150 are coming beautifully to fruition. What excites you most about the garden project?

The real practicality of the garden project is to teach kids in underserved communities, who may

not have easy access to fresh produce, where their food comes from and about the environment and sustainability. There are so many lessons that can be taught using the school garden as a tool: science, math, reading, leadership skills, social and emotional growth. We hope to empower teachers and students to incorporate the school garden into all aspects of learning.

Because of this initiative, I can envision middle and elementary school students becoming interested in the science of farming or hydroponics. When they are in high school or college, perhaps they'll have the opportunity to intern somewhere and gain the skills for a job or a career.

Temple also helped plant trees as part of the TE150 legacy. How does that add to our social justice efforts?

This was actually part of TE150 co-chair Suzi Greenman's vision. We found a truly wonderful donor who cares deeply about trees and the environment, and it is our hope that this project will continue to give back to the city for years to come. It is yet another opportunity for us to be in partnership with the greater community in a long lasting and meaningful way.

You have also been instrumental, along with Erica Matsil and Andrew Paull of Temple, and consultant Laura Day, in starting Tzedek Emanu-El. How does that push forward our social justice work at Temple?

Tzedek Emanu-El provides a cohesive framework for our social justice work throughout the congregation where members of all ages could be working on the same projects for the same beneficiaries, with the same values and goals in mind.

You are no stranger to Temple leadership, having served in many roles. How was the TE150 work meaningful to you?

I have served in several roles while on the Board and Executive Committee, including vice president over social justice, and this seemed like a natural fit and a lovely way to be involved in TE150. I'm honored to have been in a leadership role and to have helped shape the way Temple Emanu-El's social justice work will look into the future.

GARDENING FOR GOOD

The Jill Stone Community Garden at Temple Emanu-El is a devoted, energetic community of 25 volunteers and 15 certified Master Gardeners (experienced volunteers who have completed extensive training). Last year, they planted, grew and donated 7,179 pounds of organic produce to the Vickery Meadow Food Pantry.



Please consider volunteering on Sundays and Wednesdays at 8:30AM.

No experience is required and the garden supplies all the necessary tools. It's a great way to meet people and know your efforts are directly helping our neighbors.

Don't miss the May/June Window for more news about the garden, plus stories from many of our gardeners about the life-changing impact of getting dirty for a good cause.

Celebration and Remembrance

Compiled by Ilana Paikoff

BECOMING B'NAI MITZVAH



Spotlight: Lila Fishman

Lila Fishman (second from left) celebrated her bat mitzvah on January 27 and experienced an unexpected special moment with her friends when they joined her on the bimah in Stern Chapel to sing and dance to “Miriam’s Song”.

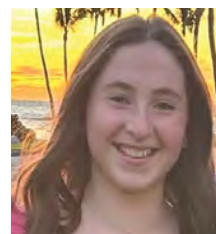


Asher and Elliana Pierce, January 20

Children of Rachel and Ben Pierce

Parish Episcopal School

Tikkun Olam: VNA Meals on Wheels Pet Program



Claire Rubenstein

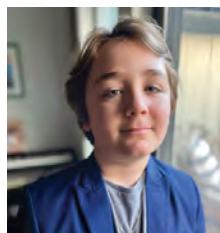
March 2

Daughter of Melissa and Jonathan Rubenstein
Highland Park Middle School
Tikkun Olam: Vickery Meadow Food Pantry and Jill Stone Community Garden

Evan Robinson

March 2

Son of Allison and Michael Robinson
Pearson Middle School
Tikkun Olam: VNA Meals on Wheels



Evan Gammieri

March 9

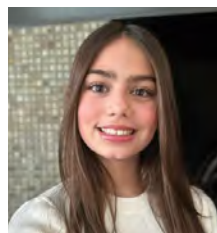
Son of Shelly and Vince Gammieri
Brentfield Elementary School
Tikkun Olam: The Twinning Project at Yad Vashem



Ben Caplan

March 16

Son of Lindsey and Alison Caplan
Levine Academy
Tikkun Olam: Feed My Starving Children nonprofit



Evah Rosen

March 23

Daughter of Rachel and Kyle Rosen
Sudie L. Williams TAG Academy
Tikkun Olam: Dallas Animal Services



Kyle Goodman

March 30

Son of Erica and Andrew Goodman
Greenhill School
Tikkun Olam: Bachman Recreational Center, Program for Adults with Special Needs



Ethan Ellman

April 6

Son of Tram and Michael Ellman
Lakehill Preparatory School
Tikkun Olam: Shoreline Spruce Up



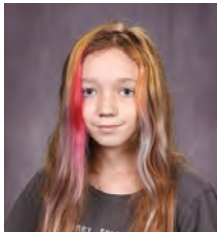
Nathan Tobey

April 6

Son of Judith and Danny Tobey
Parish Episcopal School
Tikkun Olam: The Friendship Circle of Dallas



Ethan Portnoy
April 13
 Son of Jola and Scott Portnoy
 Parish Episcopal School
 Tikkun Olam: For the Love of the Lake (White Rock Lake preservation project)
 Preservation Project



Piper Hedderich
April 13
 Daughter of Stephanie Hedderich & Erica and Josh Hedderich
 Brentfield Elementary School
 Tikkun Olam: Austin Street Center



Julia Bella Frankfurt
April 20
 Daughter of Edith and Joshua Frankfurt
 Greenhill School
 Tikkun Olam: Children's Medical Center Library, Feed the City, Lema'an Achai Emergency Campaign Iron Sword 2023 benefiting IDF soldiers, toy donation



Jolie Claire Rosenzweig
April 20
 Daughter of Natalie and Jeff Rosenzweig
 Richardson West Junior High Arts and Technology Magnet
 Tikkun Olam: SPCA of Texas' Dallas Animal Care Center



Jude Meyer Rosenzweig
April 20
 Son of Natalie and Jeff Rosenzweig
 Westwood Junior High — The Math, Science and Leadership Magnet
 Tikkun Olam: Feed My Starving Children and SPCA of Texas' Dallas Animal Care Center



Austin Sacks
April 20
 Son of Paula and Jonathan Sacks
 Episcopal School of Dallas
 Tikkun Olam: Madrichim, youth music



Lola Arabella Saks
April 20
 Daughter of Sophie and Evan Saks
 Schimelpfenig Middle School



Lorelei Stone
April 27
 Daughter of Stephanie and Peter Stone
 Greenhill School
 Tikkun Olam: Feed the City

WEDDINGS



Matthew Witkin and Sarah Gilberg



Rachel Lipkin and Rob Bajor



Charles Hasday Tate
April 27
 Son of Lisa Hasday and Joshua Tate
 Highland Park Middle School
 Tikkun Olam: North Dallas Shared Ministries and Dallas Holocaust and Human Rights Museum



OriAnn Phillips and Scott McCartney



Barrett Gold and Whitney Rogers

NEW MEMBER SPOTLIGHT

By Ilana Paikoff

Twenty-five new member households joined the Temple family in January and February. Our new member spotlight subjects, siblings Sam, Eliza and Emily Rosenbloom, are happy that they're now all together at Temple. *B'ruchim habaim*, welcome y'all!

Meet Eliza, Sam and Emily Rosenbloom

How did you get to Dallas?

We are all from San Antonio. Emily has lived in Dallas for the last seven years since graduating college. Sam has lived in Dallas for the previous two years since moving due to law school. Eliza moved here last May after graduating with her master's degree in social work.

Tell us about your Temple journey. How did you find us and what excited you about joining?

Our parents were members before we were born and were married by Rabbi David Stern! In fact, Emily and Eliza had their baby namings at Temple. Growing up in San Antonio, we frequently visited family in Dallas and would attend b'nai mitzvah ceremonies, Shabbat services and High Holy Day services. As we gradually all moved to Dallas, it was only natural for us to join such a beautiful community.



What is it like being members with your siblings? Do you all have other family here as well?

It has been wonderful to attend events with siblings; it makes Temple feel like home. A significant reason we moved to Dallas was to be with family. We have four pairs of aunts and uncles and over a dozen cousins in Dallas too! We have loved attending Friday night services, attending the ATiD 20s and 30s Hanukkah party and joining the Federation's community gathering for solidarity with Israel.

Are there any programs you are excited to get involved with?

We are all excited to continue our Jewish education, engage in volunteering and attend ATiD 20s and 30s events.

NEW AND RETURNING MEMBERS

Jose Aguayo

Jon, Tori, Barron and Goldi Boski

Taylor, Eli and Logan Brook

Sergio, Nelly, Karina, Carlos and Ricardo Carrasco

Lee, Vanessa and Bronwyn Cohen

Anna, Nicholas and Joshua Correa

Matthew, Jessica, Emilia and Ezra Emanuel

Bob Feinberg

Ilya, Sarah and Shaya Feynberg

Jonathan and Clara Fine

Susan Gelpman

Katie Kravit, Craig and Cole Dimbleby

Mike Kunen

Margaret, Steven, Lyla and Bradley Lerner

Mark, Karissa and Oran Levine

Nick, Avery and Gray Masinter

Barry Mellman and Bonnie Glazer

Aaron Molina

Corin Osborn and Kyle Weinstein

Sam Rosenbloom

Eliza Rosenbloom

Ygal Schuller-Podbilewicz and Kimberly Corson

Meredith, James and Brooklyn Smethie

Matt Wallenstein, Nicole Quiterio and Elza Wallenstein

Barry and Cindy Zale

BABY NAMINGS



Calvin Burk
Son of Cameron and Jayme Burk
Grandson of Leland Burk



Brooklyn Smethie
Daughter of Meredith and James Smethie



Iris Gulotta-Gold
Daughter of Eric Gold and Guy Gulotta-Gold (z"l)
Granddaughter of Tricia and Matthew Gold



Julia Audrey Gold
Daughter of Blair and Josh Gold
Granddaughter of Tricia and Matthew Gold



Emma Yazvac
Daughter of Katherine Brodbeck and Michael Yazvac
Sister of Luka Yazvac



Elijah Sparkman
Son of Emily and Elliot Sparkman
Brother of Emma Sparkman

IN MEMORIAM

Rusti Bell
Wife of Howard S. Bell
Mother of Brent P. Heilbron

Laurie Blicher
Wife of Zola Blicher
Mother of Julie Thompson, Joy Fisher, David Sertner
and Robert Sertner

Murray Colton
Husband of Diane Colton

Laurie A. Evans
Wife of Dr. W. Phil Evans
Mother of David Hardaway
Sister of Richard Lewins

Carol Greenberg
Mother of Terry Friedman, David Greenberg,
Mark Greenberg and Andree Rosen

Ken Helfman
Husband of Jerri Helfman
Father of Kory Helfman, Theresa Helfman Taylor, Daniel
Helfman, Lee Greer, Andy Greer and Russell Greer

Jack Introligator
Husband of Jan Introligator
Father of Meredith Pryzant, Craig Introligator and
James Introligator

Darlene Klein
Mother of Colleen Oates

Christian Krippner
Father of Rachel Swerdlow

Margie Landau
Mother of Joyce Blackledge, Barry Bernard and Jeff Bernard

Bruce Delvin Merechka
Brother of Brandon Merechka

Kace Benjamin Phillips
Husband of Claire Phillips
Father of Caroline Phillips and George Phillips
Son of OriAnn Phillips and Judson C. Phillips (z"l)
Brother of Micall Sandler and Brandon Phillips

Jeffrey Robinson
Husband of Sharon Robinson
Father of Zane Robinson, Courtney Robinson and Haley
Newman
Brother of Barry Robinson, Steve Robinson and Stacy Blank

Carole Shlipak
Mother of Andrea Shlipak Mail and Michael Shlipak

Edward Dunn Snyder
Father of Carol Niren and Kenneth B. Snyder
Grandfather of Cantor Leslie Niren

Phyllis Somer
Wife of Joseph Somer
Sister of Lynne Bogart, Ted Bogart and Karen Somer
Mother of Michael Somer and Stuart Somer

Samuel George Toub
Husband of Brenda Toub
Father of Jacqueline Talbot

Morris Zoblotsky
Brother of Margie Glazer

152ND ANNUAL MEETING OF TEMPLE EMANU-EL

APRIL 3, 2024 | 6PM | LINZ HALL

Official Information and Nominations for Officers and Board of Trustees

The Nominating Committee consisted of Michelle Whitman, Chair; Ann Gallant, Greg Gerstenhaber, Andrew Gilbert, Gayle Johansen, Madeleine Kline, Nancy Rivin, Amy Roseman, Lauren Savariego and David Steinfield. Serving as ex-officio to this committee were Bob Krakow, President, and Sara Albert, First Vice President. In accordance with Article VI, Section 10 of the by-laws of Congregation Temple Emanu-El, the Nominating Committee submits the following nominations for officers and trustees.

NEW SLATE

The following people are being proposed to serve as officers for a one-year term:

PRESIDENT

Bob Krakow

FIRST VICE PRESIDENT

Sara Albert

VICE PRESIDENTS

Rachelle Weiss Crane

Jeana Foxman

Greg Gerstenhaber

Jon Rollins

Linda Wimberly

Erin Zopolsky

SECRETARY

Barry Greenberg

TREASURER

Peter Weinstock

The following people are being proposed to serve for a first two-year term:

Flauren Bender

Arlene Glazer

Eric Goldberg

Jeff Kitner

Lacey Laude

Ann Rosenzweig

May Sebel

Catherine Susser

Madeline Wolf

Jeff Zlotky

The following people are being proposed to serve for a second two-year term:

Betsy Kleinman

Josh Nichols

Jená Prystowsky

Steven Hicks-Safra

LE Wolovits

CONTINUING BOARD OF TRUSTEES

The people listed below are not part of the slate because they are in the middle of their term. Their names are listed for your information only, and in order that you may get a full picture of the proposed Board.

The following people have served the first year of their second two-year term:

Alice Barnett

Lauryn Bloom

Mary Lee Broder

Liz Chalfant

Deidra Cizon

Katrina Gross

Nancy Rivin

Mike Rosen

Scott Rosuck

Linda Sheff

David Steinfield

Julie Weinberg

Randy Winski

The following people have served the first year of their first two-year term:

Debbi Andres

Eugene Berman

Robert Elkin

Sherly Fields Bogen

Sara Gail

Andrew Gilbert

Risa Gross

Peggy Kaufman

Madeleine Kline

Staci Mankoff

Jennifer Nocerini

Robin Sachs

The following past presidents serve on the Board of Trustees:

Chris Cheniae

Robert Cohan

Bert Fischel

Larry Ginsburg

Beth Gold

Suzi Greenman

Robin Kosberg

Scott McCartney

Stanley Rabin

Bernard Raden

Frank Risch

Mike Sims

Mark Zilbermann

APPOINTMENTS AND DEPARTING BOARD MEMBERS

The following appointments to the Board of Trustees have been made in accordance with Article IV, Section 1 of the by-laws by virtue of their congregational office:*

BROTHERHOOD PRESIDENT

Andrew Zusman

WRJ PRESIDENT

Robin Nathanson

CEMETERY COMMITTEE CHAIR

Julie Bleicher

We thank the following members for willingly serving the congregation. They now depart the Board of Trustees:

Ariana Cook

Nikki Gibson

Gayle Johansen

Josh Kahn

Hanne Klein

Allison Levy

Randy Ratner

Paige Sachs

Tina Wasserman

Eli Cohn Wein

**Changes in Board members are subject to organizational elections or presidential appointments taking place later in the year.*



PURIM 2024

(TAYLOR'S VERSION)

Put on your sparkles and grab your microphone, it's time to party like a Purim pop star in this year's Taylor Swift-inspired celebration! Check out our Purim lineup and register at tedallas.org/events

Pop Star Purim: Adult Party and Esther's Story (Taylor's Version) Purim Spiel

Saturday, March 23 | 7PM | Tycher Gathering Space | \$25 per person

Welcome Purim with this fun-filled, adults-only evening. Get the party started with dinner and drinks, followed by the first performance of this year's spiel, Esther's Story (Taylor's Version). Following the show, enjoy dessert, dancing, a photo booth opportunity and more!

Esther's Story (Taylor's Version) Purim Spiel and Carnivals for All Ages

Sunday, March 24 | 10AM | Stern Chapel

Families with children of all ages are invited to celebrate with costumes, spiel and carnival fun. Begin with Esther's Story (Taylor's Version) at 10AM. New this year will be a special tot carnival for children up to 5 during the spiel, complete with face painting and an opportunity to enjoy the carnival inflatables without the big kids! Following the spiel, the carnival games, bounce houses, a climbing wall and more will be open for everyone. Food will be available for purchase from local food trucks.

Carnival tickets are required for all children ages 2 and up who are participating.

Pre-sale until March 22: \$10 per ticket | After March 22: \$15 per ticket

SHINE *the light*

**SUPPORT AND RESOURCES FOR
SPIRITUAL AND MENTAL WELL-BEING**

Grief Support on Zoom

First Tuesday of the month, 12-1PM: March 5, April 2, May 7

In-Person Grief Support

Last Tuesday of each month, 12-1PM: March 26, April 30, May 28

Jewish Family Service Support Groups

Our community partner, Jewish Family Service, helps adults, children and families navigate mental health challenges and coping skills through a variety of support groups. To learn more, visit jfsdallas.org.

Substance Abuse Support for Friends and Families

Thursdays every week from 5:30-6:30PM in person and on Zoom

Contact for more information and Zoom link: Freda Heald, fredaheald@yahoo.com

HERE FOR YOU

Temple clergy and staff are available to support our community members navigating mental and physical health issues. Please reach out to us for help if you, a friend or family member is experiencing a crisis or an ongoing issue.

NO BARRIERS

Finances should never be a barrier to participation in Temple life. Confidential financial assistance is available for most Temple events, tuition and dues.

For information or Zoom link, please contact Meredith Pryzant, Director of Member Support, for all support needs except where noted. mpryzant@tedallas.org, 214.706.0000, ext. 3802

She's Got All Her Sisters With Her...

MEET ENERGETIC WRJ PRESIDENT ROBIN NATHANSON

When Robin Nathanson and her husband, David, were new to Dallas in 2019, she knew instinctively where to turn to get involved. She found Women of Reform Judaism to get connected to the Temple community. It didn't take long for her to not only join the friendly, purposeful community, but to become one of its leaders and its biggest cheerleader.

Robin served as corresponding secretary and then vice president for communications. In June 2023, she was elected president for a two-year term.

While she has many interests in the organization, one passion in particular drives her: "No woman should ever have to sit alone. My number one priority is to smash the walls of loneliness with meaningful interactions between our members that lead to a nurturing community and deep-rooted friendships. Come sit by me or any of our members at Temple events. We would love to get to know you and hope you want to hang out with us."

Robin says she is proud to be part of such an impactful Temple institution. "I have met so many amazing women on my journey. The Board members and past presidents are a priceless source of wisdom. We have had several new women join the Board this year. It is an exciting time to be a part of such a legendary institution!"

We caught up with Robin to visit about WRJ's mission, challenges and current initiatives.

What special role does WRJ play at Temple?

Our mission is to strengthen the spiritual fabric and create a fulfilling center for the women of Temple Emanu-El. We do this through engaging programming, financial support, local and national social action and supporting youth as the future of Reform Judaism. Even with all this important work going on, we also have a lot of fun.

WRJ has long been a source of creative and supportive programming. In the post-Covid era, do you see goals shifting in any direction?

Our membership wants to be relevant in our local Temple Emanu-El and DFW communities and ensure that all members and guests can be involved in any way that works for them. WRJ implemented our FaceTime Sisters program for people who are not able to attend an event. This assures that no one will get left out.

What are some current challenges for WRJ?

There is a perception that joining WRJ means you must commit to volunteering. You don't have to commit to doing anything as a member. Just come hang out with us. Let's get to know each other, and maybe we can do some good together.

Can you give us a sneak preview about the WRJ calendar?

Sure! WRJ's Social Justice Committee has been re-launched. Anyone interested in finding out more can contact Michele Galen, michelebgalen@yahoo.com, or Kristy Goltz, kjgoltz@gmail.com.

We'll be gathering with other sisterhoods in the area for the annual Y.E.S. Fund program and fundraiser at Temple Shalom on March 10. We're planning an event for the total solar eclipse in April and a bus tour of historic Jewish and black Dallas neighborhoods in May.

As for the rest, you never know what sort of mischief and shenanigans we'll get into!



Gifts of Memory, Honor and Gratitude



OUR CONGREGATION

Dora Aronson Helping Hands Fund

Distributions by Rabbi David Stern to individuals in need of financial assistance, particularly in dire situations

Memory of Adele Colen

by Artyce Colen

Memory of Dora Aronson

by Artyce Colen

by Irma Grossman

Memory of Greta Herskowitz

by Carla Sherman

Memory of Irwin Grossman

by Irma Grossman

by Julie & David Kronick

Memory of Libby Braude

by Irma Grossman

Memory of Louis Baum

by Harriet Silverman

Memory of Margie Levin

by Larry Golman

Memory of Marie Grossman

by Irma Grossman

Memory of Morris Grossman

by Irma Grossman

Memory of Olga Braude

by Irma Grossman

Marriage of OriAnn Phillips & Scott McCartney

by Beverly & Malcolm

Bonnheim

Susan Salom Clergy Good Works Fund

Distributions to charitable organizations, individuals in need or community causes by Temple's clergy

Memory of Annette Alper

by Gertrude & James Craig

Memory of Rusti Bell

by Ellen & Lee Salzberger

Memory of Libby Bender

by Dianne & Michael Bender

Memory of Ronald Blum

by Carolyn Blum

Memory of Fanny

Braslow Brody

by Sylvia & Malcolm Cohen

Memory of Albert Brotkin

by Ellen Samuels

Memory of Isadore Brotkin

by Ellen Samuels

Memory of Murray Colton

by Gail LeVine

by Bobbie & David Repp

Memory of Ethelyn Fishman

by Celia Saunders &

Minnette Klein

Memory of John Glover

by Sariith & Rich Abramowitz

Memory of Carol Greenberg

by Terry & Michael Friedman

Memory of Greta Herskowitz

by Howard Herskowitz

by Ellen & Lee Salzberger

Memory of Jack Introligator

by Margie Glazer & Nanci Gay

Memory of Jack Kasten

By Marilyn Fiedelman

Memory of Mollie

Solomon Klein

by Sister & Joel Steinberg

Memory of Dana Krebs

by Steve Fletcher

Memory of Christian Krippner

by Celia Rose Saunders

by Marleen Roosth Swerdlow

Memory of Esther Laufer

by Rose Lyn & Larry Laufer

Memory of Margie Levin

by Ilene & Steve Sanders

Memory of Peter Levy

by The Shanks Family

Memory of Wolf Ozarow

by Sariith & Rich Abramowitz

Memory of Kace Phillips

by Gary Kahn

by Lori Stahl

by Lori & Rick Golman

by Barbara & Dennis DuBois

by Beverly & Malcolm

Bonnheim

Memory of Jeff Robinson

by Shannon & Zane Robinson,

Leslie & Steven Peskind

Memory of Betty Rosenfeld

by Steve & Ilene Sanders

Memory of Gwen Samel

by Irwin & Debra Korngut

Memory of Norma Schlinger

by Paula Schlinger & Family

Memory of Melinda Shapiro

by Rayna & Michael Loeb

Memory of Edward D. Snyder

by Shelby Sibitsky

Memory of Lewis Somentheil

by Joanne R. & Steve Levy

Family Philanthropic Fund of the DJCF

Memory of Phyllis Somer

by Somer Family

by Jill Bindler

by Rayna & Michael Loeb

by Peachy Rudberg

Memory of Oscar J. Steinberg

by Sister & Joel Steinberg

Memory of Joel Ziskind

by Ellen & Lee Salzberger

Memory of Morris Zoblotsky

by Margie Glazer & Nanci Gay

Appreciation of Cantor

Vicky Glikin

by Carolyn Blum

Appreciation of Ruby

Goldman

by Susie & Joel Litman

Appreciation of Rabbi

Kimberly Herzog Cohen

by Susie & Joel Litman

by Erica & Andrew Matsil

by The Shanks Family

by Marleen Roosth Swerdlow

Appreciation of Michael Levy

by Gail & Rodney Susholtz

Appreciation of Rabbi

Michael Lewis

by Rose Lyn & Larry Laufer

by Leslie & Steven Levin

by Susie & Joel Litman

Appreciation of Cantor

Leslie Niren

by Gilian & Steve Baron

by Susie & Joel Litman

Appreciation of Rabbi

Debra Robbins

by Arlene & David Steinfield

by Lisa Rapfogel

by Nancy & Richard Fincher

Appreciation of Rabbi

David Stern

by Carolyn Blum

by Gold Family

As a Contribution

by Janet & Brian Coppinger

by Natalie, Lauren & Remi Stern

by Karen & Howard Weiner

by Carol W. & Max M Sandfield
Philanthropic Fund of the

Dallas Jewish Community

Foundation

Birthday of Renee Gilbert

by Muriel & Sally Dreyfus

Birthday of Barry Rothschild

by Judy & Ron Foxman

Celebration of Barrett Gold

by Ivy Gold

Bar Mitzvah of Evan Yoffe

by Shlomit & Nechemia Proter

Baby naming of Harvey

Barrer

by Debbie & Robert Barrer

Baby naming of Calvin Burk

by Lisa & Ira Kravitz

Baby naming of Ruby

Goldman

by Susie & Joel Litman

Conversion of Mike Kunen

by Jennifer Cassell

Marriage of Kate & Steve

Buchalter

by Steve Buchalter

Marriage of Claire Greenberg

by Marcia Grossfeld

Honor of Frank Risch

by Rita Sue & Alan Gold

by Judy & Ron Foxman

Honor of Jeff Robinson

by Shannon & Zane Robinson

Honor of Rabbi David Stern

by Howard & Catherine Gilbert

Philanthropic Fund

Honor of Rachel, Evelyn, Reese

& Matthew Swerdlow

by Marleen Roosth Swerdlow

Speedy Recovery of Rabbi

Kimberly Herzog Cohen

by Sylvia & Malcolm Cohen

Wish Happy Holidays to

Benjamin Goldstein

by Goldstein Family

Anne & Sam Kesner Caring Congregation Fund

Assistance for Temple members through all phases of life including hospitalization, elder care, military service, mental health challenges and grief

Memory of Lois Bernstein

by Paula & Norm Feldman

Memory of Laurie Blicher

by Greg Jacobs

Memory of Lowell M. Dryzer

by Ruth Dryzer

Memory of Harry Feldman

by Paula & Norm Feldman

Memory of Charles Gartner

by Gigi Gartner

Memory of Carol Greenberg

by Judy & Ron Foxman

Memory of Greta Herskowitz

by Julie & Michael Lowenberg

Memory of Jack Introligator

by Kem Merritt

by Beverly & Malcolm

Bonnheim

Memory of Margie Levin

by Sheryl & Gordon Bogen

Memory of Kace Phillips

by Celia Rose Saunders

by Judy & Ron Foxman

Memory of Norma Schlinger

by Susan Kagan

Memory of Marcia Wagschal

by Janice & Harvey Pearlman

Memory of Irene Warshaw

by Lynne Bogart



OUR TEMPLE AND CEMETERY

Rose Marion and Lee H. Berg Building Fund

Upkeep and maintenance of our historic building

Memory of Greta Herskowitz

by Annette Corman

Memory of Margie Levin

by Annette Corman

Memory of Norma Schlinger

by Annette Corman

Memory of Sylvia S. Schwartz

by Bobbi & Richard Massman

Birthday of Jay Lorch

by Lynn & Bob Behrendt

88th of Birthday Larry

Steinberg

by Bobbi & Richard Massman

Temple Emanu-El Cemetery Endowment Fund

Distribution from the Temple's foundation supporting the maintenance and improvement of the cemetery grounds

Memory of Margie Landau

by Lois Wolf

Memory of Margie Levin

by Lois Wolf

Memory of Howard Moss

by Terri Homberger

Memory of Norma Schlinger

by Shirley Tobolowsky

Memory of Max Edward

Tonkon

by Lois Wolf

As a Contribution

by Larry Goldman

Rabbi Gerald J. Klein

Memorial Cemetery Fund

Beautification and improvements of the Temple Emanu-El Cemetery

Memory of Rose Ballas

by Freda Ballas

Memory of Ethelyn Fishman

by Celia Saunders & Minnette Klein

Memory of Margie Landau

by Lois Wolf

Memory of Norma Schlinger

David Jay Leibs Video Collection (Alex F. Weisberg Library Fund)

Purchase of Judaic books, publications and entertainment media

Memory of Hannah & Carl Beren

by Arlene Leibs

Memory of Laurie Blicher

by Arlene Leibs

Memory of Norma Schlinger

by Arlene Leibs

Dorothy & Henry Jacobus Archives Fund

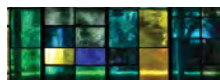
Support of special exhibits from our Archives

Memory of Kace Phillips

by Beth & Jim Gold

Memory of Norma Schlinger

by Peggy & Dave Millheiser



GENERAL

Temple Emanu-El General Operating Fund

Support of Temple's general programs and events

Memory of Martin Baron

by Beth & Jim Gold

Memory of James Edward Bartfield

by Sarah & Steven Bartfield

Memory of Rusti Bell

by Marshalls, Mullins & McNamaras

by Judy Cooper Family

Memory of Murray Colton

by Sherri & Alan Darver

Memory of Steve Dropkin

by Jackie & Steve Waldman

Memory of Mollie K. Elfont

by Shirley & Robert Elfont

Memory of Barney Fritz

by Joyce & Ira Fritz

Memory of Hyman Fritz

by Joyce & Ira Fritz

Memory of Carol Greenberg

by Sherri & Jim Steiger

by Ann & Michael Gallant

Memory of Jack Introligator

by Alex & Alex Horn

by Brad Blumenthal

by Jan & Tom Timmons

Memory of Margie Landau

by Tricia & Jim Krohn

by Ynette & Jim Hogue

Memory of Gerald Leberman

by Linda & Stephen Levine

Memory of Margie Levin

by Barbara & Michael Mack

by Cheryl & Paul Gardner

by Julie & Greg Pierce

by Julie & John Coleman

by Lori & Rick Golman

Memory of Miriam Levine

by Joyce & Ira Fritz

Memory of Anna Mittelman

by Sue Wayne-Strauss

Memory of Evelyn G. Muntz

by Barbara & David Muntz

Memory of Wolf Ozarow

by Lauren & Jason Bender

Memory of Kace Phillips

by Brad Blumenthal

by Macki & Paul Ellenbogen

by Sally & Bob Rosen

by Ynette & Jim Hogue

Memory of Sondie Rosenthal

by Nancy & Bobby Rosenthal

Memory of Sherwin Rubin

by Karla & Larry Steinberg

Memory of Arnold Schwartz

by Barbara & Richard Massman

Memory of Melinda Shapiro

by Linda & Joe Altick

Memory of Carole Shlipak

by Karla & Larry Steinberg

Memory of Phyllis Somer

by Devora Rubin

by Lillian & David Shriro

Memory of Walter Steirn

by Wendy & Stephen Lieman

Memory of Max Edward

Tonkon

by Edward & Wilhelmina

Ackerman Foundation, David

& Caroline Ackerman, Eddie

& Beth Ackerman. Paula

& Douglas Menendez,

Samantha & James Asch

by Julie & John Coleman

Memory of Marcia Wagschal

by Karla & Larry Steinberg

Memory of Morris Zoblotsky

by Donald Zale

Appreciation of Alex Horn

by The Jakubowich Family

As a Contribution

by Fellman Family Fund of the

Dallas Jewish Community

Foundation

88th Birthday of Larry

Steinberg

by Jackquelline B & Michael G

Hoffman Charitable Fund

by Phyllis & Ron Steinhart

Bar Mitzvah of Teddy Levy

by Devora Rubin

Marriage of OriAnn Phillips & Scott McCartney

by Debbie & Marc Andres

by Brad Blumenthal

Wish Happy Holidays

to Barbara & Randy

Rosenblatt

by Fonda Glazer

Temple Emanu-El

Endowment Fund

Distribution from the Temple's

foundation supporting

Temple's programs

Memory of Margie Levin

by Mimi & Mark Kogut

Marriage of OriAnn Phillips & Scott McCartney

by Sheryl & Gordon Bogen



MUSIC AND PRAYER

Music Fund

Enhancement of Temple music

programs

Memory of Shirley

Eichenwald

by Harriet Silverman

Memory of Sidney Goldstein

by Barbara Miller

Memory of Abe Gordon

by Kim & Avrum Schonwald

Memory of Margie Landau

by June Leib

Memory of Norma Schlinger

by Sherri & Alan Darver

by Polly Weisberg

Memory of Edward D. Snyder

by Debbie & Howard Haile

by May Sebel

by Peggy & Dave Millheiser

Memory of Barbara Thorman

by Wendy & George Palmer

Memory of Marcia Wagschal

by Betsy & Todd Teitell

by Rene & Jimmy Wisch

Philanthropic Fund of the

Dallas Jewish Community

Foundation

Appreciation of Cantor

Vicky Glikin

by The Shanks Family

As a Contribution

by Joyce & Joe Rosenfield



ADULT PROGRAMS

Aline C. Rutland Prayer

Book Fund

Purchases of prayer books

Memory of Phyllis Somer

by Wendy & George Palmer

Katherine F. Baum Adult

Education Fund

Support for adult education

programs

Memory of Katherine F. Baum

by Peggy & Dave Millheiser

Speedy Recovery of Michael

Hoffman

by Arlene & David Steinfield

Henry D. Schlinger Ethics

Symposium Endowment Fund

Support of the ethics

symposium

Memory of Norma Schlinger

by Stephen P. Aronoff

by Janis & Charles Dworkis

by Frada & Alan Sandler

by Gloria & Joe Pryzant

by Marcy & Michael Grossman

by Robin Sachs & Bob Farkas



SOCIAL JUSTICE

Hunger Relief Projects

Collection of funds for hunger

relief throughout the year,

especially during High Holy

Days and Passover

Memory of Randy Beck

by Susan & Daryl Beck

Memory of Stuart Beck

by Susan & Daryl Beck

Memory of Joe Bosse

by Donna & Jeff Bosse

Memory of Adelaide Cohn

by Mary Ann Lustig

Memory of Esther Cohn

by Mary Ann Lustig

Memory of Isadore Cohn

by Mary Ann Lustig

Memory of Arthur Dominus

by Mary Ann Lustig

Memory of Ethelyn Fishman

by Celia Rose Saunders

Memory of Florence Gold

by Faye & Howard Polakoff

Memory of Carol Greenberg

by Joyce & Joe Rosenfield

by Miriam Vernon

Memory of Madeline

Hartman

by Rose Lyn & Larry Laufer

Memory of Jack Introligator

by May Sebel

Memory of Bernard Kersh

by Susan & Daryl Beck

Memory of Harvey D. Kirk

by Mary Ann Lustig

Memory of John Ira Kirk

by Mary Ann Lustig

Memory of Marshall Lustig

by Mary Ann Lustig

Memory of David Daniel

Polakoff

by Faye & Howard Polakoff

Memory of Jeff Robinson

by Cathy & Alvin Miller

Memory of Norma Schlinger

by May Sebel

by Miriam Vernon

Memory of Melinda Shapiro

by Miriam Vernon

Memory of Phyllis Somer

by Helen Feldman

by Miriam Vernon

Memory of Ida M. Strasmick

by Miriam Vernon

Memory of Sam Szor

by Nancy & Jerry Szor

Memory of Vic Trubitt

by Sherilee & Richard Trubitt

Memory of Marcia Wagschal

by Bette & Gary Morchower

by Miriam Vernon

Memory of Morris Zoblotsky

by Helen Feldman

by May Sebel

As a Contribution

by Joyce & Joe Rosenfield

100th Birthday of Gerardo

Weinstein

by Miriam Vernon

Anniversary of Sandra & Dan

Gorman

by May Sebel

Anniversary of Nancy &

Richard Marcus

by Jerry & Kathy Kantor

The Jill Stone Tikkun

Olam Fund

Support of Temple's social

justice programs including

initiatives, advocacy, projects

and lectures

Memory of Sadie Greenberg

by Kitzil Ball

Memory of Elizabeth Greenman

by Suzi & Jack Greenman

Memory of Greta Herskowitz

by Jan & Tom Timmons

Memory of Jack Introligator

by Marcia Grossfeld

Memory of Peter Levy

by Sarah Kaplan & Peter

Bogdanow

Memory of Richard "Dick"

Presby

by Mindy & Mark Tulbert

Memory of Harriet Robbins

by Bette & Gary Morchower

Memory of Phyllis Somer

by Jan & Tom Timmons

Memory of Jill Ruth Feinstein

Stone

by Rob, Melissa, Sabrina,

Chelsea Stone

Memory of Symon Tulbert

by Mindy & Mark Tulbert

Marriage of OriAnn Phillips &

Scott McCartney

by Sally & Rick Rosenberg

Marriage of Erica Strauss &

Andrew Matsil

Bar Mitzvah of Brinley Silverstein
by Judi & Randy Ratner

Social Justice Fund for Youth Education
Support of worthwhile educational causes for youth in need
Memory of Myron Ball
by Kitzi Ball
Memory of Elizabeth Greenman
by Peggy & Dave Millheiser
Memory of Jack Introligator
by Sally & Rick Rosenberg
Memory of Albert Sheppard
by Jenene & Mitchell Perry
Memory of Carole Shlipak
by Gary & Bette Morchower
Memory of Ann Weiler
by Zara & Larry Westbrook
Memory of Simon Weiler
by Zara & Larry Westbrook
88th Birthday of Larry Steinberg
by Bette & Gary Morchower



YOUTH AND EARLY CHILDHOOD EDUCATION

William P. Budner Youth Library Fund
Purchases of Judaic books and publications for students
Memory of Betty Chaiken
by Lynn & Jay Staub
Memory of Miriam Dorfman
by Roz & Art Kaplan
Memory of Sidney Dorfman
by Roz & Art Kaplan

Early Childhood Education Center (ECEC) Fund
Support of ECEC programs
Memory of Sheryl Feinberg
by Susan Kagan
Memory of Margie Landau
by Janis & Dan Gail
Memory of Peter Levy
by Lindsay Bendorf
Memory of Stanley H. Litman
by Susie & Joel Litman
Memory of Kace Phillips
by Frada & Alan Sandler
by Jamie & Ed Tonkon

Memory of Melinda Shapiro
by Susan Kagan
Memory of Mitzi Wells
by Bobbi & Jerry Wells
Gina Rosenfield Levy Greene Family Camp Scholarship Fund
Financial assistance to families for Greene Family Camp
Memory of Annette Alper
by Phyllis & Phil Stoup
Memory of Fred Milton Brown
by Jacque & Freddy Roberts
Memory of Joseph M. Brown
by Jacque & Freddy Roberts
Memory of Adolph Stoup
by Phyllis & Phil Stoup
Memory of Bess Meyer Stoup
by Phyllis & Phil Stoup
Memory of Marcus Wells
by Bobbi & Jerry Wells
Memory of Richard Wells
by Bobbi & Jerry Wells

Paul Lande Summer Camp Scholarship Fund
Scholarships for children to attend Jewish summer camp
Memory of Nethie K. Lande
by Sheri & Jack Vine
Memory of Paul Lande
by Sheri & Jack Vine

Marriage of Livia & Shira Stevenson
by Jennifer Cassell

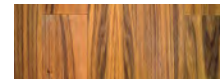
Lomdim Project
Support of an open and inclusive community for YL+E children with special needs
Memory of Greta Herskowitz
by Roz & Art Kaplan

Martin and Charlotte Weiss Religious School Fund
Scholarships for YL+E fees, books and additional expenses
Memory of Rusti Bell
by Carol Hirsh
Memory of Margie Levy
by Lynn & Jay Staub
Memory of Edwin Daniel Staub
by Lynn & Jay Staub

Shor/Lowenstein Youth Scholarship Fund
Financial assistance to families for participation in youth programs
Memory of Lottie Bricker
by Richard Polakoff
Memory of Steve Dropkin
by Ruthie & Alan Shor

Memory of Margie Levin
by Alan & Ruthie Shor
Memory of David Mayerson
by Bobbi & Jerry Wells
Memory of Kace Phillips
by Robin Kosberg & Mark Washofsky
Birthday of Marc Andres
by Ruthie & Alan Shor
Birthday of Jim Gold
by Ruthie & Alan Shor
Birthday of Judy Markey
by Ruthie & Alan Shor
Birthday of Mark Masinter
by Ruthie & Alan Shor
Birthday of Alan Shor
by Lisa & Hal Philipson
Conversion of Mike Kunen
by Robin Kosberg & Mark Washofsky
Seth Davidow Family Youth Fund
Distributions from the Temple Emanu-El Foundation supporting youth program at Temple Emanu-El
Memory of Seth Davidow
by Rick & Kerri Lacher
Philanthropic Fund
Memory of Margie Levin
by Rick & Kerri Lacher
Philanthropic Fund

Memory of Melinda Shapiro
by Rick & Kerri Lacher
Philanthropic Fund
Memory of Max Edward Tonkon
by Rick & Kerri Lacher
Philanthropic Fund
As a Contribution
by Joan Davidow & Stuart Glass



WRJ

YES Fund of Sisterhood
Support of the Youth, Education and Service programs of Women of Reform Judaism
Memory of Jack Introligator
by WRJ
Memory of Edward D. Snyder
by WRJ
Memory of Phyllis Somer
by WRJ



WAYS TO GIVE

The Annual Fund is Temple's highest fundraising priority. There are many ways to make a gift. As always, thank you for your generous support.

ONLINE

tedallas.org/give/annual-fund

TEXT MESSAGE

Text Gift2TEAnnual to 91999



PHONE or EMAIL

Joselyn Ramey
214.706.0000 ext. 2402
jramey@tedallas.org

BY MAIL

Temple Emanu-El
Attn: Office of Advancement
8500 Hillcrest Road
Dallas, TX 75225

STOCK TRANSFER

Broker: Hilltop Securities, Inc.
Attn: John Rutledge, 214.953.4165
DTC#: 0279
Credit Account: 7686-8944
Account Name: Temple Emanu-El

NOTE: Please notify Sandy Diamond at sdiamond@tedallas.org if you plan to make a gift by stock transfer or ACH.

ANNUAL FUND SPOTLIGHT

By Ilana Paikoff

The Temple Emanu-El Annual Fund is Temple's highest fundraising priority every year. The dollars raised help supplement Temple's operating budget and help provide support to all our community. Each issue, the Window features Annual Fund leaders and supporters who give generously of their time and financial resources.

Lori and Jon Karp

Lori and Jon Karp are longtime Temple members who are involved in many aspects of Temple life. Jon and his family have lived in Dallas since 1975, and Lori, who grew up in South Florida, has lived in Dallas since 1998.

Tell us a little about your Temple journey. When and how did you find Temple?

Jon: My family joined Temple a year or two after moving here when I was 10. I basically grew up at Temple. My mom, Renée Karp, was the program director for 30 years. I had my bar mitzvah at Temple with Rabbi Gerald Klein. Both parents, my sister, my aunt and uncle and other extended family are members of Temple.

Lori: When I moved here in 1998, Jon and I were already engaged, and I joined the synagogue he was a part of. A few years later, my parents moved to Dallas and also became members of Temple. We have three children: Shira, 24, who celebrated her bat mitzvah at Greene Family Camp with Temple clergy; Max, 22, who had his bar mitzvah at Temple and Brady, 16, who had a virtual bar mitzvah ceremony during the pandemic.

What aspects of Temple life have you been involved in?

Jon: All of our children and I love to blow the shofar during High Holy Days services. I was on the Board of Trustees from 2016-2020. I was also on the Social Action Committee and Religious School Committee many years ago. Before having children, I taught 3rd, 5th, 7th and 8th grade at Temple's religious school program, now YL+E.

Lori: Two of our children attended ECEC while I was working there from 1999-2008 and taught all ages. I especially loved teaching computers to the Pre-K students.



What motivates you to be a giver to Temple?

Jon: To be able to help the future of Temple and to have the opportunity to create that feeling for others is all about paying it forward and giving back. Every single time I walk into the Temple building, I feel like it's a small place, and I know my family feels the same. You could be sitting in High Holy Days services with 2,000 people but the warmth you feel can really only be described as family.

Scenes from Our Schools

By Livia Stevenson

With the spring semester well under way, we took a moment to check in with the Early Childhood Education Center and Youth Learning + Engagement Sunday Program to see what our schools are up to this time of year.



First grade YL+E students practice their best tree poses at the Tu BiSh'vat family program with Rabbi Kimberly Herzog Cohen.



Something is always turning up in the ECEC garden!



This year's annual bake sale hosted by YL+E third grade raised a total of \$1,197 to be donated to Vickery Meadow Food Pantry and Magen David Adom.



International Night brought treats and traditions from multiple countries represented in the ECEC.



YL+E celebrated TE150 in November by decorating tiles in response to the prompt "What Does Temple Emanu-El Mean to You?" The mural, consisting of 442 tiles, is now hung in the upstairs hallway for everyone to see!

Children go with the glow as they discover the magic properties of light.



Witnesses to Heartbreak and Hope

The Leadership Solidarity Mission to Israel brought together 12 Temple members and one Greene Family Camp leader, who spent three days visiting the country and interacting with its people. Here are reflections of several of our leaders who attended the trip.



Barry Greenberg

With shocking images and tragic stories still churning in our heads from our earlier visits to kibbutzim in the Gaza envelope, we journeyed to Rahat to meet with rescuers who saved dozens of Israeli lives at great personal risk to themselves during the October 7th massacre.

Once we settled in, Ismail (with the help of our tour guide Maya), began to tell us his story.

The day began with his uncle running into the room at 6:45AM telling Ismail that he, along with his three cousins, needed to go rescue his uncle's son,

Hisham, who was trapped near Kibbutz Be'eri, where he had been working. They quickly jumped into a jeep heading towards the kibbutz.

As they approached Be'eri, they found people fleeing from the music festival, which was under attack. While texting Hisham, they rescued 30-40 people who were fleeing the music festival.

Meanwhile, Hisham was hiding in the bushes with an Israeli woman who lived near the kibbutz where he worked. They remained hidden, hearing constant gunfire and fearing for their lives, until finally Ismail and his cousins arrived. Once safely in the car, the group began

to retrace their steps to Rahat. After only a mile or so, they were confronted with a large group of IDF soldiers who surrounded the car and ordered them to get out and lie on the ground. Everyone feared for their lives. The Israeli woman explained that the group in the car were not terrorists, and ultimately the IDF stood down.

Despite all that happened, including narrowly escaping harm from the IDF, Ismail seems determined to use this experience for good to help show the possibility of coexistence between Israelis and Palestinians.



Michael Solka
Greene Family Camp Leaders Council

There were two things about what happened at Kibbutz Nir Oz on October 7 that I found particularly disturbing and that I'll never be able to forget: Hamas terrorists spray-painted their names on buildings they looted and torched to take credit for their acts and Gazan civilians let their children ride bicycles in the streets of the kibbutz that day while their parents participated in the carnage.

Risa Gross

Tali Roitman, a Jewish Israeli whose mother was kidnapped on October 7, told us not only about the initial violent attack by Hamas, but also about the second wave of Palestinians to cross the Gazan border. As Michael said in his reflection, kids who had come across with the crowd found bikes belonging to Israeli kids, and rode them around the now-devastated kibbutz.

But another story we heard about kids stands in stark contrast.

Mohammed Darawshe, an Arab Israeli whose cousin was murdered on October 7, told us about a Jewish boy with a worried Jewish mother. His mother instructed him that if he were ever on a bus and heard people speaking Arabic, he should pull out his phone, dial the emergency number, and hover his thumb above the call button. However, this Jewish boy learned a little Arabic, and the next time he found himself on the bus with some Arabic-speaking boys, he realized that they were just chattering among themselves the way he and his friends did.



How can we get from the callousness of the bike-riding Palestinian kids to the Jewish boy's realization that, in so many ways, people are alike? Mohammed, who has spent years building bridges between Jewish and Arab communities, emphasized that Jews and Arabs cannot simply hope a shared

society into existence: they must conscientiously develop the skills to live together. How much will exist for that work in the wake of October 7 remains to be seen, but as we heard over and over again, neither Israelis nor Palestinians have any intention of leaving the land. Faced with that reality, the only way forward is together.



Beth Gold

Demanding the release of the hostages is the single most important issue on every Israeli's mind. As the days in captivity drag on, the ongoing trauma and pain endure in lockstep. "Bring Them Home" images are projected on buildings and posters cover every inch of the country. I spent an extra day in Jerusalem and visited the stunning National Library, which had curated an installation of chairs for each hostage in captivity. On each chair was a book awaiting their return. Some books were selected by relatives, others chosen according to individual personal interests and hobbies, and others selected based on the spirit, title, or content of the book. As signage in the library explains: "We await their safe return, so that they may all continue to read and write the story of their lives. This story must have a happy ending!"



Temple presents artwork from our community to Kibbutz Nir Yitzhak.

Bob Krakow

We were acutely aware that we were not just there as individuals, but that we were representing this community. It was a decision we made with a bit of hesitation. I personally was never concerned for our security, but I wondered: Are we going for the right reason? Are we going to feel better about ourselves or should we have sent the money we spent on plane fare and hotels directly to Israel?

The answer to that is we absolutely should have been there. Not one person failed to thank us profusely for being there.

I felt more connected to Israel and the Jewish people than I ever had in my life. All of us who care about Israel, who care about the Palestinians and peace and finding a path forward, we need to be hearing each other.



SAVE THE DATE

May 19 | 4pm
Benefit Concert for Israel

NOA
Also starring Gil Dor
and
Ruslan Sirota
Special Guest and Grammy-Winning Pianist

Sara Albert

I went to Israel with the expectation of learning a great deal about Israel—about current events, politics and policy that would help me understand the situation. It became clear to me though that this was a trip that was going to be about being present for others. We all encountered a country that was grieving. Everyone had some sort of personal connection to what was happening. There were signs of irrepressible life and fortitude, and finally, hope.



(L-r) Beth Gold, Bob Krakow, Sara Albert



Jon Rollins

We stayed at the Dan Panorama, where many of us have stayed on other Temple trips. But we weren't the only people. There were evacuees from the Gaza Envelope and the north living there too. They were using the hotel lobby as living space, with lots of kids running around and grandmas talking to one another. It was very powerful to be in the middle. I had to admit I had the feeling I was imposing on someone else's life.

Meredith Fried

On the first day, we visited Kibbutz Nir Oz. They took us to see the dining hall, and we saw all the tape on the mailboxes: red if murdered, black if they were a hostage, blue if they were released. We stepped into the dining hall over broken glass. And yet it was a beautiful day, we heard birds chirping and bombs going off in the distance at the same time.

The other powerful thing was that we went to Mount Herzl to see the graves of the soldiers who had lost their lives. We also realized that we were standing on ground prepared for soldiers who had not yet perished.



The Window (USPS #017-824) is published six times per year by Temple Emanu-El Congregation, 8500 Hillcrest Road, Dallas, TX 75225-4204. Periodicals Postage Paid at Dallas, Texas.

POSTMASTER, send address changes to:

Temple Emanu-El Window
8500 Hillcrest Road
Dallas, Texas 75225-4204.



Fifth grade YL+E students enjoy treats purchased from the third grade bake sale.