

The Window

All the Light
We Can See



Holding Fast to Torah:
Shavuot 2023

Reels Up! Cinema Emanu-El

What's Next for TE150

CONTENTS

PRAYER AND SPIRITUALITY

A Message from Rabbi David Stern	3
Shavuot	4
In the Torah	4

COMMUNITY

Meet Our New Officers and Trustees	5
Celebration and Remembrance	8
New Member Spotlight	10
Cinema Emanu-El	11
Temple Security Update	12
MAC Season Preview	13
Spring Fever: A Season in Photos	14

LEARNING

Mazel Tov to Our Confirmation Class	18
ECEC Graduations	19

JUSTICE

Teens Tour Civil Rights Sites	20
-------------------------------	----



THE FUTURE

TE150 Looking Ahead	21
Olan Lecture with Rabbi Michael Marmur	21
Annual Fund Spotlight: Steve Brown	22
Tributes	23

ISRAEL

Congregants Reflect on Israel Travel Memories	26
---	----



Temple
Emanu-El

Founded in 1872
8500 Hillcrest Road | Dallas, Texas 75225
214.706.0000 | tedallas.org

Temple President
Bob Krakow
Executive Director
Meredith J. Fried

Clergy
Rabbi David E. Stern
Rabbi Debra J. Robbins
Cantor Vicky Glikin
Rabbi Amy Rossel
Rabbi Kimberly Herzog Cohen
Cantor Leslie Niren
Rabbi Michael Lewis

Department of
Congregational Advancement
Sandy Diamond, Senior Director

The Window
Connie Dufner, Senior Director
of Communications
Ann Wilson, graphic designer
Livia Bernstein, writer
Ilana Paikoff, writer

The Empathetic “We” of Shavuot



Rabbi David Stern

We Jews love the first-person plural. If there were an Academy Awards show for grammatical forms, keep your “she” and “he,” your subordinate clauses and apposite phrases: e Jews would give the Oscar to “we” and “us” every time.

On Yom Kippur, we recite *al cheit shechetanu*, “For the sins we have sinned against You,” at the beginning of a long list of transgressions, most of which

have hopefully managed to avoid. But still we say “we.”

On Pesach, we read the famous passage from Deuteronomy 26: “My father was a wandering Aramean, and he went down to Egypt and sojourned there ... The Egyptians dealt harshly with us and oppressed us ... We cried out to God, and God heard our plea and saw our plight ... And God freed us from Egypt by a mighty hand.” Even though we recite the words in homes seemingly safe from oppression, our freedom from slavery well-established and the Exodus a distant mythic memory, the Haggadah still calls us to speak as if the Exodus happened to “us,” as if “we” were there.

And then on Shavuot, when we celebrate the giving of the Torah at Mount Sinai, the tradition goes all-in on the first-person plural. Our sages teach that gathered at the foot of the mountain of revelation were not only the totality of the Jewish people in the wilderness, but all of us, in every generation down to the present day. My kids were there, right alongside distant ancestors whose names I never knew and the grandmother I never met. Grammarians speak of the “royal we,” but Shavuot gives us the ultimate Jewish we: “We all stood at Mount Sinai.”

Why the Jewish love affair with the first-person plural? A few common answers come to mind. First, by emphasizing the “we,” we subordinate the “I”: we communicate the Jewish value of humility by speaking regularly of our being part of a greater whole. “We” also communicates a sense of shared responsibility, as on Yom Kippur: When I say, “For the sins we have committed,” I accept responsibility for the transgressions of my community, even if I myself have not committed them. “We” also establishes association: When I say “we” were slaves and God freed “us,” I bind myself to the story of the Exodus and of my people. That association is intended to drive us to a sense of commitment: I associate myself with the Exodus experience of oppression and redemption in order to open my heart to its truths and demands in my own day.

I don’t think our tradition is trying to trick us into thinking we were at the Red Sea or Mount Sinai, or that we committed every sin in the book. Instead, I think Judaism wants us to engage in the vital act of imaginative empathy through which we connect ourselves to experiences other than our own. Precisely because I wasn’t in Egypt, to say “we” and open my soul to the pain of Egypt; on Yom Kippur, to say “we” and humble myself by recognizing I could easily have lost control and committed that transgression I avoided. Ironically, the “we” wouldn’t be nearly as powerful if it were factually accurate. I think Jews love “we” because it proclaims Jewish identity in and across time, and because it asks us to move, consciously and deliberately, beyond our own personal experience to understand and identify with the experience of others, Jew and non-Jew alike.

And when Shavuot arrives this year on May 25-26 (see p. 4), we proclaim, “We all stood at Sinai,” and thereby open ourselves to the possibility of wonder and revelation each day, a Torah that is constantly renewed rather than rote. To say “we” and know the blessing of the first-person plural means to stand with one another in similarity and in difference, in empathy and compassion, toward justice and in hope.





—SHAVUOT 2023—

Turn it!

AN EVENING OF TORAH AND ART

“Turn it and turn it again, for all is in Torah;
see through it; grow old and worn in it...”

Pirkei Avot 5:22

Culminate the passage from Pesach and seven weeks of counting the Omer with Temple’s special Shavuot celebration. We’ll start with a deep dive into this framing passage from Pirkei Avot, learn more about Temple’s art, sing and pray together, and finish the evening with sweet dairy (and dairy-free) treats!

Thursday, May 25 | 7PM | Register: tedallas.org/events

Friday, May 26 | 10:30AM | Festival Service with Yizkor



In the Torah

This is the season of counting. The Omer is on its march from Pesach to Shavuot, from liberation to rootlessness to settling, from animal sacrifice to the Holiness Code. We’re enjoying the bounty of our land and building the landscape of the soul. Over these coming weeks, the Torah will continue to outline what God requires of us, and will move from Leviticus to its own season of counting in the Book of Numbers.

It’s also time to count our blessings, especially as we pause at the end of the school and program year and look forward to a different pace over the summer. The Temple calendar is rich with graduations, Confirmation and Shabbat celebrations honoring members of our community. We hope you’ll make every effort to join us for warm welcomes, fond good-byes, and heartfelt mazel tovs.

After all, that’s what counts.

Weekly Torah Readings: May/June 2023

May 5–6

Emor, Leviticus
21:1 – 24:23

*Shabbat honoring
graduating high
school seniors*

May 12–13

B’har/B’chukatai,
Leviticus 25:1 –
27:34

*Shabbat honoring
Shelly Sender,
Senior Director of
Early Childhood
Education, as
she prepares to
leave Temple*

May 19–20

B’midbar,
Numbers 1:1 – 4:20

*50+ Shabbat,
honoring those who
have been or would
have been married 50
years or have 50 years
of adult membership
(or both!)*



May 26–27

Naso I, Numbers
4:21 – 5:31

*Mazel Tov Moments,
honoring those
who celebrate May
birthdays and other
special milestones*

June 2–3

Naso II, 6:1 – 7:89

*Pride Shabbat,
honoring and
supporting our
LGBTQ community*

June 9–10

B’haalot’cha,
Numbers 8:1 –
12:16

June 16–17

Sh’lach L’cha,
Numbers 13:1 –
15:41

*Juneteenth Shabbat,
with special guest
Rev. Virzola Law,
Senior Pastor of
Northway Christian
Church*

June 23–24

Korach, Numbers
16:1 – 18:32

*Mazel Tov Moments,
celebrating June
birthdays and other
special milestones*

June 30–July 1

Chukat/Balak,
Numbers 19:1 –
22:1, 22:2 – 25:9



Meet our New Officers and Trustees



Debbie Andres

Hometown: Atlanta, Georgia, member since 1994

Professional life: Communications and marketing

Volunteer life: Temple Board of Trustees 2003-2008, 2018-present, Executive Committee of the Board of Trustees; Annual Fund Chair; Development Committee Chair; High Holy Days Committee Chair; TE 150 Rededication Celebration Co-Chair; Membership Committee

Temple is here for me because... in addition to being my spiritual home, I find a sense of community at Temple which is so meaningful and fulfilling to me. I have the opportunity to work with incredible lay leaders, staff and our clergy who are committed to the same core values I hold dear. Also, the Andres family has been a part of Temple for generations so that historical connection is very special.

My goals for Board service are... I'm honored to continue serving on the Board of Trustees and focus more of my time on the TE 150 Celebration as well as membership and engagement.



Eugene Berman

Hometown: Born in Kiev, Ukraine; grew up in Fort Worth and Plano, Temple member since 2016

Professional life: Finance

Volunteer life: UT Southwestern junior board, various volunteer efforts at Temple, including work with Ukrainian refugees

Temple is here for me because... of my Jewish identity. Spending my summers in Ukraine and abroad showed me the world looks at Jews as the other. These experiences ignited a love for our people and culture. Temple is also where my wife converted and where we got married. I could not be more grateful for the community and beautiful energy.

My goals for Board service are... to give back to the community and institution that has given my family so very much, notably Rabbi Kimberly Herzog Cohen. I hope to make Temple mean as much to others as it does to me. I hope to provide a helpful perspective and utilize my background to help make Temple better for all.



Sheryl Fields Bogen

Hometown: Dallas from age 2; I grew up attending Temple. After living in Houston and Atlanta, I moved back to Dallas in 1999 and immediately joined Temple when I moved back to Dallas.

Professional life: Elementary school teacher and fundraiser for the Union for Reform Judaism.

Volunteer life: Co-founder, with Jerry Szor, of Dallas Furniture Bank. Founding chair of the Mark and Peggy Zilbermann Tzedakah Fund committee and was the co-chair of the Our Temple | Our Future capital campaign. Chaired the Olan Lecture and Senior Adult committee

Temple is here for me because... it is my spiritual home. I have celebrated many happy occasions with my family at Temple. And I have been comforted and surrounded with loving support in times of sadness. My grandparents and parents were Temple members and it brings me great joy to continue the family tradition of worship, volunteerism and social justice.

My goals for Board service are... As I rejoin the Board, I am looking forward to getting to know the current and new Board members and supporting the meaningful work of TE150.



Robert Elkin

Hometown: Freeport, New York, Temple member since 1985

Professional life: Retired business litigator

Volunteer life: Helped found a nonprofit that provides high school voter engagement and registration; have held a variety of leadership positions at Temple Emanu-El

Temple is here for me because... it is a place that has an array of resources and people to support my religious and spiritual needs and seeking, and also to help me and my family in times of celebration and challenge.

My goals for Board service are... to provide my perspective and insights from years of membership and to help support the congregation through unique and challenging times.



Sara Gail

Hometown: Dallas, Temple member for 34 years

Professional life: Non-practicing attorney and former legal search firm owner

Volunteer life: President of the ECEC Parents Association and Chair of the ECEC Steering Committee; Executive Committee, co-chairing Phase 3 of the TE150 Ensuring Our Future Endowment Campaign. Outside of Temple, Parents' Association at St. Mark's School of Texas.

Temple is here for me because... My family's major milestones, both happy and sad, have taken place at Temple. I am so grateful for the community that has joined us through these times and for the lifelong friends I've made at Temple Emanu-El.

My goals for Board service are... I am excited to wind up a few long-term Temple volunteer commitments and see what is next for me at Temple Emanu-El. I've learned so much over the last six years on the Board and Executive Committee. I know great things are still to come!



Andrew Gilbert

Hometown: Dallas, lifelong Temple member

Professional life: Executive Assistant City Attorney, City of Dallas

Volunteer Life: TE150 Arts Committee, Music, Arts and Culture Council

Temple is here for me because... I feel actively connected with the past, present and future of my community.

My goals for Board service are... to represent the interests of our community as informed through my engagement and experiences.



Risa Gross

Hometown: Dallas; I grew up going to Temple and returned as an adult, when I returned to Dallas.

Professional life: Nonprofit and philanthropy work

Volunteer life: Documenting our History committee for TE150, Within and Beyond Our Walls task force

Temple is here for me because... Temple is my analogue to Cheers: a place where I am comfortable and I am known. And because I am comfortable and known, I feel empowered to do work that, I hope, helps others.

My goals for Board service are... to help ensure Temple is in good stead for the next 150 years. To help Temple keep caring and advocating for those both within and beyond our immediate community. And when appropriate, to question the status quo — with the belief that Temple, like us all, can continue to evolve and improve.



Peggy Kaufman

Hometown: York, New York; I'm from a little town in western New York State, not the Big Apple! Temple membership: 20 years

Professional life: Healthcare consultant

Volunteer life: Temple Foundation Board, worship chair for TE150; outside Temple, Duke University Alumni Admissions Advisory Committee and Vice President of the Board of Directors for Kitchen Dog Theater.

Temple is here for me because... I know I can always find a committed, gifted group of congregants to join, whether they're invested in prayer and worship, social justice, governance, or community building. Temple is what makes Dallas feel like home.

My goals for Board service are... to continue to learn about how Temple works, to pitch in where I'm needed, and to help make sure that all constituencies at Temple are represented.



Madeleine Kline

Hometown: Dallas, lifelong member of Temple

Professional life: Corporate attorney at Polsinelli PC

Volunteer life: In addition to the Board of Trustees, Stew Pot, the Birthday Party Project and Human Trafficking Institute

Temple is here for me because... it has been my home since ECEC, and the clergy and community here have seen me through all of my major life cycle events. As an adult, I have been welcomed with open arms and it is exciting for me to be able to continue to strengthen my relationship with Temple through my work on the Board.

My goals for Board service are... to engage young adult members, increase new membership, and provide new and unique insights regarding the many programs and services Temple offers.



Staci Mankoff

Hometown: Dallas, Temple member since childhood

Professional life: Certified Public Accountant, with roles as a tax accountant, and commercial mortgage banker

Volunteer life: National Council of Jewish Women, Broadway Dallas, CHAI group homes

Temple is here for me because ... it has been a second home for me my whole life; a safe place that I always know is there for me and my family. I love that my husband and his family have been members for a long time too. I am proud to be a third-generation member and proud that my children are fourth-generation members.

My goals for Board service are I hope to gain a strong understanding of the inner workings of Temple and gain knowledge of how Temple serves such a wide variety of families and such a large number of members.



Jennifer Nocerini

Hometown: Park Ridge, New Jersey, Temple member since 2019

Professional life: Research analyst for a private investment firm

Volunteer life: Co-president of Parents Association of the ECEC and member of ECEC steering committee; Budget Committee, Finance Committee, Temple Emanu-El Foundation Board; Investment Committee for Temple Foundation

Temple is here for me... as my spiritual home and community, to help raise my children as Jews, and as an extended family to my own immediate family. Our closest friends are all members of Temple — those with whom we spend our free time, celebrate holidays and honor life cycle events.

My goals for Board service are... to support our community, represent Temple families like mine, to offer my skill set in all the ways I may be of service to the organization, and act responsibly and in the best interest of Temple's objectives.



Robin Sachs

Hometown: Dallas, third-generation Temple member

Professional life: Commercial/photographic artist and teacher with focus on portraiture, adventure travel and project-oriented photography.

Volunteer life: Past Board president of Jewish Family Service, current Board member of ADL and the JFS Foundation. Co-chair of Documenting Our History committee for TE150 and previously involved in the former G2G program at Temple.

Temple is here for me because.... of the renewed personal connection I have discovered through my involvement and research with the Documenting Our History and the ONE Photographic Series & Interview Project for TE150.

I have become more aware of my family's generations-long history, as well as the diverse membership that cares deeply and depends upon our Temple community, clergy and staff.

My goals for Board service are... to learn more about the inner working and decisions made by the Board and how they support Temple's core values. I look forward to supporting and helping to rededicate the future of our Temple.



Peter Weinstock

Hometown: Jericho, New York, Temple member since 1995

Professional life: Attorney

Volunteer life: The Family Place, where various roles have included co-founding the young professionals auxiliary, president, and co-founder of The Family Place Foundation.

Temple is here for me because... it is a vibrant part of my family.

My goal for Board service is... to help Temple maintain its financial health as it expands its role in our community.



Erin Zopolsky

Hometown: Baton Rouge, Louisiana; Temple member since 2010

Professional life: Meeting and event planning

Volunteer life: Volunteering for kids' schools, Women of Reform Judaism, National Council of Jewish Women; YL+E Committee co-chair; TE150 Harvest co-chair

Temple is for me because... it's warm, friendly and nurturing, and full of hardworking, smart and spirited people.

My goals for Board service are... to continue to support the amazing work of Andrew Paull, our Director of Youth Education, and to strengthen our YL+E program to keep our children wanting to come back and make Temple their home; to assist with a smooth transition for Meagan Friedman, our new ECEC Director.

Celebration and Remembrance

BECOMING B'NAI MITZVAH



**Ella Dylan McCallister,
May 6**
Daughter of Iris Midler and
Matt McCallister
McCullough Intermediate School
Tikkun Olam Project:
Austin Street Center



**Alexandra Sheimberg,
May 6**
Daughter of Alice Ovadia and
Arturo Sheimberg
Parish Episcopal School
Tikkun Olam Project:
Dwell with Dignity



**Caleb Cohen,
May 20**
Son of Jayme and Justin Cohen
Richardson West Junior
High School



**Jules Fine,
May 20**
Son of Stephanie and
Daniel Fine
The Episcopal School of Dallas
Tikkun Olam Project:
Austin Street Center

WEDDING



Megan Simons and Ben Crane



Daisy Castro and Joanna Bernal



Natalie Weltman and Colin Cook



Bettina Kinzer and John Sayre

CONVERSIONS



**Pictured l-r: Jessica (holding Jenny), William and
Ella Hernandez**



Lydia Heyman



Scott Peck

BABY NAMINGS



Maximillian Field

Son of Natasha and Wesley Field



Noa Esther Fertig

Daughter of Laura Raden and Benjamin Fertig
Granddaughter of our members Irene and Buddy Raden
Granddaughter of James and Susan Fertig



Blakely Gross

Daughter of Melissa and Andrew Gross



Andres Martin Hall

Son of Erika Lopez Bertieri and Matthew Hall
Brother of Martha Emma Hall



Gerald Barnes Kogan

Son of Sophie Barnes and Larry Kogan
Grandson of Debbie and Gerald Barnes (z"l)
Nephew of Lily Barnes



Grey Lennox Pollak

Son of Brielle and Alex Pollak
Brother of Everett Pollak



Sloan Schanzer

Daughter of Lucy and Kyle Schanzer
Granddaughter of Ruthie and Jay Pack

NEW AND RETURNING MEMBERS

Bernie Apter

Andrew Astmann

Mariya, Andrew, Michael and Joshua Barnett

Rebecca, Joshua, Seraphine and Louis Benesh

KJ Charania

Jenna, Zach, and Harrison Cooper

Orna Gilat

Bryan and Priscilla Hoffman, Nyssa Jagan, Olivia and
Vivienne Hoffman

Kevin Kotamarti

Joe Levy and Liz Rosenberg Levy

Morton Meyerson

Gregory and Morgan Michaelson

Carolyn and Casey Perry

Janine, Scott, and Lev Reutter

Norman Sandfield

Jessica, Gerald, Benjamin, Eli and Kate Saul

JB Schwartz, Sonya Hebert, Violet and
Genevieve Schwartz

Megan Sims

Brittany, Matthew, and Jonathan Sowards

Brandon and Sarah Watson, Dawson and Aubrey
Clanton, Daxton and Aurora Watson

Staci Weaver

Peter Willey

Lisa and Skylar Zakarin

*See following page to meet a new member!

WELCOMING OUR NEW MEMBERS



Thirteen new member households joined the Temple family in February. Of those, 61 percent are young adults or have joined as a family, 46 percent have young children or are expecting and 54 percent have joined Temple wanting to be part of a community.

B'ruchim habaim, welcome y'all!

New Member Spotlight: Staci Weaver

What made you join Temple Emanu-El?

My daughter and daughter-in-law joined and invited me to a Shabbat service. I enjoyed it so much I joined. It was such an inclusive community; I knew I found the right synagogue.

What stands out about your introduction to Temple?

Once I attended the new member dinner, I knew I had made the right decision. Everyone was so welcoming, and the feeling of community and family was evident. I thoroughly enjoyed myself and looked forward to meeting new people.

Are there any programs that you are excited to get involved with?

I am very excited to get involved with volunteering opportunities and the sisterhood.

IN MEMORIAM

Dr. Burton Balkin

Husband of Esther Balkin
Father of Jackie Hoffman

Robert Broder

Father of Michael Broder, Thomas Broder and James Broder

Julie Stern Cacamo

Wife of Hank Cacamo
Mother of Cory Cacamo
Sister of Debbie Stern Friedman, Philip Stern and Jeffrey Stern

Madeline Covens

Mother of Murray Covens, Howard Covens, Shari Covens and Mari Covens
Sister of Norma Stone

Marjorie Phillips Cowin

Mother of Judson C. Phillips (OriAnn Phillips) of blessed memory
Mother of Jeffrey R. Phillips (Sandy H. Phillips) of blessed memory

Karen Ward Dolan

Mother of Melissa Essler, Mallory Gothard, Allison Griffin and Megan Dolan
Sister of Ricky Ward

Irwin "Billy" Gart

Husband of Donna L. Gart
Father of Julie Gart and Gennifer L. Gart

Utiya Gelman

Mother of Inna Leyzerzon and Mariya Gutman

Celia "Picce" Gellman Glast

Wife of Bob Glast
Mother of Rachel Glast and Deborah Glast
Sister of Tobi Gellman and Steven Gellman

Eleanor Kohlberg Goodman

Mother of Karla Jane Steinberg, Leonard Goodman, Walter Goodman and Elizabeth Levy

Catalina Herskowitz

Mother of Linda Kessler, Mannie Herskowitz and Cindy Herskowitz
Sister of Maria Elena

Nancy Horowitz

Mother of Lynn Horowitz Magid and Larry Horowitz

Karen Ring Johnson

Daughter of Lewis and Sue Ring and Miriam Giller-Smith
Sister of Adam Ring and Steven Ring

Miriam Karp

Mother of Dr. Alan Karp
Sister of Hanki Harris

Margery Karpel

Mother of Robert Karpel, Janet Coppinger, Mark Karpel and Karen Karpel

Henry Kearny

Husband of D'Dee Kearny

Nicole Lidji

Mother of Alan Lidji, Brian Lidji and Craig Lidji

Irwin Lang Lowenstein

Husband of Joel Dampf Lowenstein
Father of Ruth Shor, Joanne Birnbrey, Suzanne Reiman, Ellen Italiaander and Stanley Lowenstein
Brother of Regine Aberson

Yevgeniya Malamis

Mother of Alex Malamis

Sonia Topletz Philipson

Mother of Julie Boren, Leslie Krakow, Cynthia Klein and Nancy Philipson
Sister of Betty Sue Sheinberg

Jill C. Rose

Mother of Jane Rose
Sister of Thomas Rose and Douglas Rose

Elizabeth Rosas Ruiz

Mother of Anjelica Ruiz

Paul R. Seidel

Father of Dr. Jack Seidel and Sherri Kraft

James Leslie Sonnenburg

Father of Lynn Vernon (Jay Vernon)

Harriet Susser Sowell

Sister of Sam J. Susser (Pat Susser) of blessed memory

James H. Wallenstein

Husband of Marcia Wallenstein
Father of Julie Weiss and Debbie Wallenstein

Charlotte Wolff

Mother of Elysia Zale, Jeffrey Wolff, Debbie Pernikoff and Jackie Fuller
Sister of Betsy Fineburg

Marcus Benjamin Zale

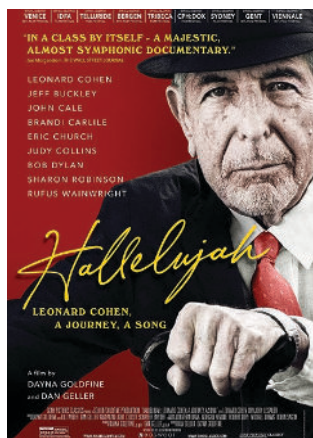
Son of Barry and Cindy Zale and Mimi Johnson
Brother of Jourdan Goldstein, Taylor Goldstein, Molly Oxman and Betsy Kraft



Cinema Emanu-El

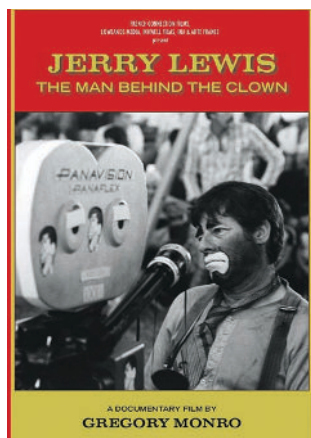
Beginning July 11 | Tuesdays @ 7PM | Tobian Auditorium

\$5 PER FILM OR \$18 SERIES PASS



**Hallelujah:
Leonard Cohen,
A Journey, A Song**
JULY 11

SCAN TO WATCH THE TRAILER



**Jerry Lewis:
The Man Behind
the Clown**
JULY 18

SCAN TO WATCH THE TRAILER



**Our (almost
completely true)
Story**
JULY 25

SCAN TO WATCH THE TRAILER



Kinderland
AUGUST 1

SCAN TO WATCH THE TRAILER



Register: tedallas.org/events | Contact: Beri Schwitzer, bschwitzer@tedallas.org

Update on Temple Security

Efforts continue to create a welcoming, secure and safe Temple Emanu-El for all our members and guests. Over the past several months, under the direction of Paul Boothe, Director of Security, and Meredith J. Fried, Executive Director, Temple has implemented enhancements on a number of fronts.

“Our security efforts are designed to balance the need to stay safe along with the Jewish value of hospitality,” says Meredith. “We have worked hard as a team of Temple clergy, staff and lay leadership to ensure that the majority of our changes are not invasive or even very noticeable, yet they are evidence of a deep commitment to a safe campus.”

Security updates include:

Completed

- Additional observation and surveillance cameras across the entire facility
- Increased number of access control systems to exterior doors.
- Additional security personnel with increased training requirements
- Enhanced building security measures for the Early Childhood Education Center
- Re-formed the Temple Security Committee for lay oversight and partnership of the Board of Trustees

In Progress

- Enhancements to the facility access management system

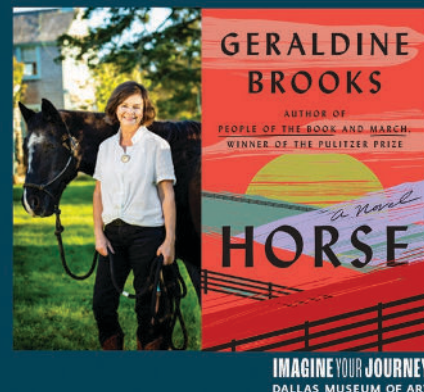
“Our increased security protocols are designed as a comprehensive strategy to keep our community protected,” says Paul. “Temple has spent a lot of time and effort to put security measures into place, but the most important one is still the individual member, teacher, parent and staffer.”

TEMPLE TO HOST DMA'S ARTS & LETTERS LIVE

Rabbi Debra Robbins will join in conversation with author Geraldine Brooks for the DMA Arts & Letters Live event at 7:30PM on June 20 in Olan Sanctuary. Arts & Letters Live is a literary and performing arts series at the Dallas Museum of Art that features nationally acclaimed authors and performers. The author will be discussing her book “Horse,” the story of the racehorse Lexington.

“This is super exciting for me and for the congregation and a great compliment that the DMA wants to have the program here,” says Rabbi Robbins. “This is a longstanding partnership and we have hosted Arts & Letters Live previously. It was also one of the dreams of Rabbi Olan in building the sanctuary in 1957 that it would be a gathering place for the greater Dallas community to explore stimulating and contemporary intellectual ideas.”

Register: bit.ly/artsandlettersliveTE





2023-2024 Season Preview

June 4 | 4PM | Stern Chapel and Online
Register: tedallas.org/events

Join Cantors Vicky Glikin and Leslie Niren for a special performance and preview of the Music, Arts and Culture Season in 2023-2024!

Be the first to learn about next year's exciting musical season at Temple Emanu-El.

SHINE THE LIGHT ON MENTAL WELL-BEING

SUPPORT AND RESOURCES FOR SPIRITUAL AND MENTAL WELL-BEING

Grief Support on Zoom

First Tuesday of the month: June 6, July 11

Grief Support In-Person

Last Tuesday of each month, 12-1 PM:
May 30, June 27

Temple has resumed an in-person grief support group. Meredith Pryzant, MSW, facilitates the group using Jewish grief and mourning resources, to help participants learn coping skills and reconnect to Temple life after the loss of a loved one.

Jewish Family Service Support Groups

Our community partner, Jewish Family Service, helps adults, children and families navigate mental health challenges and coping skills through a variety of support groups. To learn more, please visit jfsdallas.org and search for support groups for children, teens and adults.

Substance Abuse Support for Friends and Families

Thursdays every week from 5:30-6:30 PM in
person and on Zoom

Contact for more information and Zoom link:
Freda Heald, fredaheald@yahoo.com

HERE FOR YOU

Temple clergy and staff are available to support our community members navigating mental and physical health issues. Please reach out to us for help if you, a friend or family member is experiencing a crisis or an ongoing issue.

NO BARRIERS

Finances should never be a barrier to participation in Temple life. Confidential financial assistance is available for most Temple events, tuition and dues.

Please contact Meredith Pryzant, Director of Member Support, for information, Zoom links and all support needs except where noted.
mpryzant@tedallas.org | 214-706-0000, ext. 3802

Full Days, Full Hearts

By Livia Bernstein

TE150 celebrations, learning with our clergy scholars, holiday festivals and a steady drumbeat of meetings and classes have kept our community connected during this joyous season. With each encounter, we come together to create *kehillah kedoshah*, a holy community.





Front Cover: David Stout's art piece, "In Their Arms We Hold the Sky," projected on Olan Sanctuary during Light Years, was inspired by ancient tapestry weaving and manuscript illumination.

Back Cover: The congregation shares in a powerful healing ritual during the Shabbat evening service on Light Years weekend.

1 A beautiful Havdalah service in Olan Sanctuary marks the end of Shabbat and the beginning of the Light Years festival evening.

2 With handprint sensors to activate "You Are Magic," Alicia Eggert's inflatable installation has people smiling the entire Light Years evening.

3 Artist Bernardo Vallarino transforms the back of Nasher-Haemisegger Family Atrium with "Kaleidoscope of Light, Habitat of Reflections." Three panels, in Latin, Hebrew and Arabic, reinforce the value of *btzelem Elohim*, all are created in God's image.

4 "Rest," by Taylor Cleveland, Danielle Georgiou and Justin Locklear highlights the beauty of Shabbat, a moment of rest, during our Light Years celebration.

5 The brains behind the operation! Thank you to the Light Years leadership, AURORA team and the amazing artists.

6 Members of all ages enjoy the artwork at the Light Years festival, especially "Valley of Giants" by Mari Hidalgo King.







13



14



15

7 Rabbi Debra Robbins and Suzi Greenman team up in the first session of Women Who Weave series: "Lore and Legacy: Treasures Tell the Truth."

8 A private tour of "Dali/Vermeer: A Dialogue," led by Nancy Cohen Israel at Meadows Museum of Art, kicks off the Creations phase of our TE150 celebration.

9 Temple members enjoy a cocktail reception and private tour of "Octavio Medellin: Spirit and Form" at the Dallas Museum of Art.

10 That's a wrap! Mazel tov and a job well done to the cast of this year's Shushan State of Mind Purim spiel.

11 Members of all ages enjoy a delicious food truck dinner at Light Years before the art comes to life at sundown.

12 YL+E students learn about Passover in the most delicious way, a chocolate seder!

13 "Circular Time: seed & harvest" by Mirta Kupferminc projects images of Temple and original art onto Stern Chapel during the Light Years celebration.

14 Our cantors lead an evening of music and emotion during the Polyphony concert with musicians from the Polyphony Foundation and the Dallas Symphony Orchestra.

15 Our dedicated volunteers come together to assemble and package a special TE150 package for every member.

16 Chag Pesach Sameach! Early Childhood Education Center children celebrate with seders and songs.



16

Taking Their Place

Confirmation students face tough questions and bond as a community

By Livia Bernstein

As the 2022-2023 school year comes to an end, we spent some time with two of our 10th grade students, Jack Bendalin and Maya Lowenberg, to reflect on this year's Confirmation class.

What has been your favorite memory this year?

Maya: Building a connection with all of my classmates and teachers/clergy. It is such a special occurrence to have a connection with the people in my class. It makes Confirmation feel secure, safe, and like a home.

Jack: When we talked about how different people view and name God, some saying Adonai and some saying God.

What challenged you this year and why?

Maya: We learn about the deeper meaning behind the traditional Jewish stories and something I have struggled with this year is taking the view of the story that I know, and slightly or completely altering it.

Jack: The challenging part of this year was speaking out about the problems that I have personally faced as a Jew. I have never been around people who deal with the same everyday issues that Jewish people face and opening up with my peers was not easy.



Maya Lowenberg



Jack Bendalin

How has being a part of the Confirmation class made you feel more connected to your Judaism?

Maya: Confirmation has taught me that there are different views and lifestyles to being a Jew. This has allowed me to understand that even though every Jewish life is different, we all have similar roots and are all connected to one another.

Jack: This year I have learned the importance of coming together as Jewish people and standing up against antisemitism and speaking out on other issues that face us.



Confirmation Ceremony

**Saturday, May 13
7PM | Stern Chapel**

Brendan Gabriel Baum
Jack Howard Bendalin
Caroline Britt Cohen
Sophia Grace Cohen
Levyn Anabelle Einstein
Ashley F. Eskenazi
Sophie Irene Fiedelman
Grant Austin Friedman
Megan Cosette Glass
Hailey Nicole Ice
Judson Ryan Katz
Anna Kaye Kronick
Maya Jini Lowenberg
Zachary Louis Moskowitz
Jackson Sean O'Donnell
Toni Simone Okon
Andrew Micah Pass
Alexander Walter Reiter
Lucas Charles Steinhart
Noah Harris Stern
Andrew Sargent Wilkes

The Classes of '23 Are the Place to Be!

Mazel tov to our Pre-K and Kindergarten students!



PRE-K

Shiya Aini
Namir Alam
Nathan Barrer
Monroe Black
Benjamin Canete
Stafford Choi
Jonathan Coury
Greyson DeVito
Noa Epstein
Oliver Epstein
Taya Flaskas
Max Genz
Ruairi Gordon
Axel Gourley
Zoe Greene
Dylan Gwisdala
Reign Hamidi

Tennyson Hunt
Ayan Khanna
Scarlett Lane
Vivienne Lavey
Jack Lidji
Birdie Lyons
Agustin Macedo
Lincoln McCoy
Edmund
McKowen-Offit
Ramses Meghani
Zoey Morrissey
Isaac Murgo
McKinley Musser
Nora Nale
Harper Ni
Rachel Ragovis

Natalie Reichman
Frank Robertson
Evelyn Rogers
Cole Ruchlin
James Sabonis
Parker Sajnani
Juliet Saller
Nora Schanzer
Elliot Segall
Aimee Sherman
Poppy Shipp
Brett Skolnik
Mila Slavin
Gavin Steinberg
Charlie Temkin
Oliver Teplin
Jack Topletz
Blakely Waxler



KINDERGARTEN

Nathaniel Ahn
Hutchinson Anderes
Peter Berman
Benjamin Gail
Olivia Greenstein
Asher Hicks-Safra
Hazel Lipper
Lily Liss
Elodie Lyons
Odin Lyons

Asher McCawley
Max Muller
Knox Nelson
Cara Post
Max Silver
Rafael Snyder
Abraham Unger
Max Valkoun
Nadim Wages
David Weglein
Jonathan Zucker



CHECK MATES!

Our Early Childhood Education Center Kindergarten classes have been busy learning about chess. With help from a chess coach that visits every Friday, students are becoming familiar with the names of the pieces, the rules and even gameplay strategy.



The Civil Rights Movement, from a Jewish Lens

In March, four Temple Emanu-El students traveled with 13 teens from Temple Israel in Westport, Connecticut for an unforgettable trip through civil rights sites in Georgia and Alabama. Below are reflections from Megan Sims, Director of Youth Engagement, who chaperoned the trip, and Zoey Olinick, a ninth grader who attended.

Megan Sims

This trip doesn't do anything to obscure or sugarcoat the realities of American history and the violence of the Civil Rights Movement, and the material can be a lot to take in. Yet throughout the weekend, I was blown away by the respect, thoughtfulness, and insight that our teens and the teens from Temple Israel brought to the experience. They offered new perspectives on the symbolism at the National Memorial for Peace and Justice, asked powerful questions of the speakers we met, and showed a profound curiosity and openness to all we experienced. Even in light of the gravity and pain of the subject matter, I left this trip with a sense of optimism. This group of teens is more than ready to tackle whatever challenging and complicated issues the world presents to them with compassion, consideration, and care.



Zoey Olinick, Joanne Bland, Megan Sims and Rae Cohen

Zoey Olinick

I had an amazing experience. Over three days, we traveled all over Georgia and Alabama and learned all about the Civil Rights movement and how Judaism played into it. We visited many museums and heard from impactful speakers who experienced the movement firsthand. We also did all of this with some Jewish teens from Connecticut. I really enjoyed making new friends and having meaningful conversations about the things we were learning. I learned more in the three days than I could have ever learned in years in a classroom. There is something truly remarkable about learning about something in the very place that it happened and from people who went through it. I know that I will take everything I learned with me throughout my life and forever be grateful for my rights.

Itinerary for Justice

ALABAMA

Montgomery: Rosa Parks Museum, Equal Justice Initiative Legacy Museum, Memorial for Peace and Justice-Lynching Memorial

Selma: Edmund Pettus Bridge

Birmingham: Freedom Park and 16th Street Baptist Church, Birmingham Civil Rights Institute

GEORGIA

Atlanta: King Center and Auburn Street neighborhood, Ebenezer Baptist Church



Students receive a blessing from U.S. Senator Raphael Warnock (D-Ga.) at Ebenezer Baptist Church, Atlanta.



16th Street Baptist Church, Birmingham



Civil rights activist Bishop Calvin Woods speaks at Birmingham stop.



Martin Luther King, Jr.'s childhood home, Atlanta



Looking Ahead

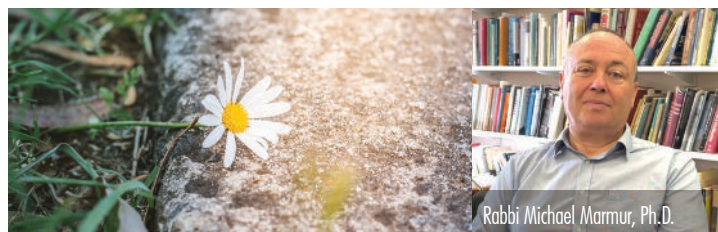
After the art-filled Creations season which culminated in the glorious Light Years evening in March, we move toward Rededication, the final season of our 15-month celebration of Temple's 150 years. Our dedicated leaders are hard at work planning experiences of learning, prayer, music, social justice and community that will launch us toward our exciting future.

Here's a sneak peek of what's planned. We'll be sure to keep you informed on all the details as they become available.

FOUNDATIONS

Torah

MAY 11: RABBI LEVI A. OLAN LECTURE



Anxiety and Hope: How modern challenges fuel Jewish innovation and creativity

With Rabbi Michael Marmur, Ph.D.

Hebrew Union College-Jewish Institute of Religion, Jerusalem

7PM | Stern Chapel and Online | Register: tedallas.org/events
Refreshments to follow

The second of three keynote lectures for TE150, Rabbi Marmur addresses the landscape of contemporary Judaism, particularly through the lens of modern Israel. A scholar in modern Jewish thought, Rabbi Marmur describes anxiety as a significant engine for Jewish spirituality and theology.

A recorded version will be available to view after the lecture.

The Olan Lecture is made possible by an endowment gift from Hannah Hochman in memory of Yetta Hochman.

Music and Spirituality

AUGUST 26

Voices of Torah, a TE150 Shabbat

A Shabbat morning celebration of Torah and our Torah readers

REDEDICATION

This exciting conclusion to TE150 includes the launch of the reimagined archives as the Center for Living History, important social justice initiatives and a time capsule!

OCTOBER 15

Temple Emanu-El Cemetery Tour

An interactive tour, with learning and ritual stations, will help explore and honor Temple's history.

OCTOBER 20



Shabbat with keynote speaker Steven Windmueller, Ph.D.

Dr. Windmueller is a foremost thinker on contemporary Judaism and American Jewish affairs. He will launch a weekend of ideas and exploration on the future of Temple and its relationships beyond its walls.

OCTOBER 22



Futurescape

Today's most innovative and creative Jewish thinkers and practitioners come together to help us imagine the community of the future. Moderated by Rabbi Ana Bonheim

OCTOBER 28

Tree Planting (details to come)

NOVEMBER 3

Rededication Shabbat

We bid farewell to TE150 and step into our future!

Steve Brown

BY ILANA PAIKOFF

The Annual Fund is Temple's highest fundraising priority, and the money raised every year helps support the richness and depth of Temple life. This spotlight introduces our community to the dedicated leaders who have given of their time and financial resources to ensure its success.



Tell us about your Temple journey.

My wife and I moved to Dallas from Memphis, Tennessee shortly before the pandemic began, to be closer to our two children and five grandchildren. Back in Memphis, my wife, Beth, and I belonged to a synagogue called Temple Israel which is very similar to Temple Emanu-El. Our

senior rabbi at Temple Israel, Rabbi Greenstein, just so happens to be friends with Rabbi Stern because of rabbinical school. The connection and similarity of both temples resulted in a smooth and seamless transition to Dallas. After moving to Dallas, I was most impressed with how welcoming the Temple Emanu-El family was. I felt special in a way I have never felt before.

My wife and I were married 49 years before she passed away in January of 2021. I couldn't have imagined a more wonderful

community to help me get through her passing. Staff and clergy supported me when I needed them and now, I feel like it is my turn to give back.

What made you say yes to the Annual Fund?

In Memphis, my family was a pillar in financially supporting Temple Israel, and we felt it was only right to support Temple Emanu-El in the same way. I want Temple Emanu-El to continue to show love and warmth to its newest generations so we can grow as a community and achieve things we have only dreamed of. When I support Temple, I am fulfilling my purpose in being one of the blessed few that helps the many.

"After making the move to Dallas, I was most impressed with how welcoming the Temple Emanu-El family was. I felt special in a way I have never felt before."

A background image for a fundraising banner featuring a close-up of a fountain. Water is spraying upwards from a dark, ornate metal structure. The background is filled with lush green foliage, creating a vibrant and refreshing scene.

CREATING
possibilities
TOGETHER 2022-2023
ANNUAL FUND

We invite you to join our Temple family in generously supporting the Annual Fund, Temple's most important annual fundraising initiative.

Scan the QR code or visit
tedallas.org/give/annual-fund
to make your gift online.
You can also text **Gift2TEAnnual**
to **91999** to give by text message.



TRIBUTES FOR SUSTAINING TEMPLE

Gifts of Memory, Honor and Gratitude



OUR CONGREGATION

Dora Aronson Helping Hands Fund

Distributions by Rabbi David Stern to individuals in need of financial assistance, particularly in dire situations

Memory of Harold Berman

By Susie & Joel Litman

Memory of Robert H. Broder

By Katherine Albert

By Marilyn Fideleman

By Julie & David Kronick

Memory of Riva Bursten

By Susie Litman

Memory of Marjorie Cowin

By Marilyn Fideleman

Memory of Ronnie Cox

By Phyllis Ray Cox

Memory of Cecelia B. Forman

By Barbara Roseman

Memory of Richard Gay

By Marianne Morris

Memory of Eleanor Goodman

By Marilyn Fideleman

By Julie & David Kronick

Memory of Minnie Shoss

Hoffman Ladin

By Adele Hurst

Memory of Irwin Lowenstein

By Debra & Ben Williams

Memory of Sam Marcus

By Gary Kahn

Memory of Sonia Philipson

By Marilyn Fideleman

By Julie & David Kronick

Memory of Jerome Skibell

By Jackie & Jerry Bendorf

By Ashley & Jeff Skibell

By Joan Skibell

Memory of James Wallenstein

By Marilyn Fideleman

Appreciation of Rabbi

David Stern

By Ashley & Jeff Skibell

By Phyllis Ray Cox

Birthday of Gerald Ray

By Joan Skibell

Susan Salom Clergy Good Works Fund

Distributions to charitable organizations, individuals in need or community causes by Temple's clergy

Memory of Harry Alberts

By Valerie Halpern & Teva

Murray

Memory of Lola Belzacki Bell

By Betty Jo & David Bell

Memory of Brenda Bennett

By Betty Jo & David Bell

Memory of Robert H. Broder

By Maddy & Mark Unterberg

Memory of Madaline Broude

By Michael R. Levy

Memory of Lawrence Burk

By The Family of Lawrence Burk

Memory of Jennifer Conaway

By Karen Baskin Levinson &

John Chaussee

Memory of Madeline Covens

By Shari Covens

Memory of Marjorie Cowin

By Jennifer & Brad Greenblum

By Linnie & Michael Katz

By Leslie & Steven Levin

By Jim Parrish & Richard

Espinosa

By Judy & Robb Steinberg

By Adrienne Epstein

By Maddy & Mark Unterberg

Memory of Rose Friedman

By Gigi Gartner

Memory of Charles Gartner

By Gigi Gartner

Memory of Louise Gartner

By Gigi Gartner

Memory of Elsa Goldberg

By Julie & Michael Lowenberg

Memory of Irving L. Goldberg

By Julie & Michael Lowenberg

Memory of Eleanor Goodman

By Lynn & Bob Behrendt

By Ynette & Jim Hogue

By Maddy & Mark Unterberg

Memory of Carl Hess

By Bonnie & Michael Grossfeld

Memory of Gary Hoffman

By Ellen & Lee Salzberger

Memory of J. Ronald Horowitz

By The Family of J.R. Horowitz

Memory of Miriam Karp

By The Family of Miriam Karp

Memory of Milton Kessel

By Elaine & Ken Stillman

Memory of Florence Ruth Friedman Levy

By Michael R. Levy

Memory of Harry A. Levy

By Michael R. Levy

Memory of Meyer Levy

By Michael R. Levy

Memory of Marjorie Levy

By Maddy & Mark Unterberg

Memory of Irwin Lowenstein

By Leslie & Steven Levin

By Lisa, Steven, Ryan & Blake

Lieberman

Memory of Sylvia B. Mandel

By Betty Jo & David Bell

Memory of Lois Okon

By Tricia & Matt Gold

Memory of Sonia Philipson

By The Family of Sonia

Philipson

By Rosie Stromberg

By Maddy & Mark Unterberg

Memory of Ganna Rayter

By Gregory Rayter

Memory of Sarah Reuler

By Judith Bazarsky

Memory of Betty Rosenfeld

By Leslie & Steven Levin

Memory of Elizabeth Rosas Ruiz

By Mercedes & Jose Garcia

By Marcia J. Grossfeld

By Anjelica Ruiz

Memory of Paul Seidel

By The Cavuoti Family

Memory of Lorna Sheinfeld

By Debbie & David Sheinfeld

Memory of James Wallenstein

By Julie & Michael Lowenberg

By Adrienne & Tom Rosen

By Maddy & Mark Unterberg

By The Family of James

Wallenstein

By Dotty & Lew Weinstein

Memory of Elsa Weiss

By Judy & Robb Steinberg

By Adrienne Epstein

Memory of Mike Weiss

By Judy & Robb Steinberg

By Adrienne Epstein

Memory of Ben Zale

By Maddy & Mark Unterberg

By Dotty & Lew Weinstein

By Cindy & Barry Zale

Appreciation of Cantor

Vicky Glikin

By Joanna Bernal &

Daisy Castro

By Dr. Reuven Firestone &

Rabbi Ruth H. Sohn

By The Family of Sonia

Philipson

By Valerie Halpern &

Teva Murray

By The Family of James

Wallenstein

Appreciation of Rabbi

Kimberly Herzog Cohen

By Joanna Bernal &

Daisy Castro

By Mercedes & Jose Garcia

By Robert Karpel & Family

By Anjelica Ruiz

Appreciation of Cantor

Leslie Niren

By Ashley & Ben Kunofsky

Appreciation of Rabbi

Debra Robbins

By Judith Bazarsky

By Shari Covens

By Arlene & Michael Glazer

By Dr. Benjamin Greenberg &

Kim Schuy

By Elizabeth, Joel & Lauren

Israel

By Judie Fertig Panneton &

John Panneton

By The Rosenberg & Burch

Families

By The Family of James

Wallenstein

By Cindy & Barry Zale

Appreciation of Rabbi

David Stern

By The Family of Lawrence Burk

By Janet & Robert Elkin

By Paula Schlinger & James

Gerhardt

By The Family of Miriam Karp

By Robin Kosberg & Mark

Washofsky

By The Family of Sonia

Philipson

By The Family of J.R. Horowitz

As a Contribution

By Natalie Weltman

Birthday of Rabbi Debra

Robbins

By Julie & David Fields

Conversion of Hannah Ferris

By Marcia J. Grossfeld

Marriage of Hannah Elkin &

Aaron Wilensky

By Janet & Robert Elkin

By Robin Kosberg & Mark

Washofsky

Marriage of Sam Richardson

& Dani Glazer

By Fran, Jeff, Mollie & Dani

Toubin

Naming of Noa Esther Fertig

By Judie Fertig Panneton &

John Panneton

Naming of Rose Gerhardt

By Paula Schlinger & James

Gerhardt

By Natalie Weltman

Anne & Sam Kesner Caring

Congregation Fund

Assistance for Temple members

through all phases of life

including hospitalization, elder

care, military service, mental

health challenges and grief

Memory of Susan Apter

By Charlene Howell

Memory of Madeline Covens

By Charlene Howell

Memory of Eleanor Goodman

By Jackie & Michael Hoffman

By Irene & Buddy Raden

Memory of Alvin Goodstein

By L.M. Gutterman

Memory of Helen Gutterman

By L.M. Gutterman

Memory of Minnie Klibanoff

By Marty Mintz

Memory of Becky Mintz

By Marty Mintz

Memory of Harold Power

By Lynne & Mark Rossow

Memory of Jill Rose

By Monte & Bonnie Hurst &

Family

Memory of Jay W. Ryemon

By Adele Ryemon

Appreciation of Temple Clergy

By Harriet L. Cohen

Speedy Recovery of Alfred

London

By Mike & Linda Sheff



OUR TEMPLE AND CEMETERY

Rose Marion and Lee H. Berg

Building Fund

Upkeep and maintenance of our

historic building

Memory of Burton Balkin

By Karla & Larry Steinberg

Memory of Ethel Burstein

By Leonard Gojer

Memory of Morris Cohen

By Helaine Trachtenberg

Memory of Marj

Memory of Betty Rosenfeld
By Sheryl & Gordon Bogen
Memory of Morris Schaffer
By Martin Schaffer
Memory of Pearl Green Schaffer

By Martin Schaffer
Memory of Rose S. Schaffer
By Martin Schaffer
Memory of James Wallenstein
By Ynette & Jim Hogue
By Bobbi & Richard Massman
By Barbara & Richard Toronto
By Helaine Trachtenberg
Memory of Ben Zale
By Sherry & Ken Goldberg
By Ynette & Jim Hogue
By June Leib
By Sally & Bob Rosen
As a Contribution
By Joan Skibell
By Cynthia Solls

Temple Emanu-El Cemetery Endowment Fund

Distribution from the Temple's foundation supporting the maintenance and improvement of the cemetery grounds
Memory of Marjorie Cowin
By Lois Wolf
Memory of Eleanor Goodman
By Ethel Zale
Memory of Louis Sonnentheil
By Joanne & Steve Levy

Dorothy and Henry Jacobus Archives Fund

Support of special exhibits from our Archives
Memory of Eleanor Goodman
By Shelley & Jeff Becker
Memory of Margery Karpel
By Shari & Jay Tobin
Memory of Jeff Phillips
By Sandy Phillips
Memory of Jud Phillips
By Sandy Phillips
Memory of Elizabeth Rosas Ruiz
By Robin Sachs
By Beth Gold
By Suzi & Jack Greenman
By Shari & Jay Tobin
By Shelley & Danny Wylie
Memory of Eva Steinberg
By Sister & Joel Steinberg
Appreciation of Jeffrey Friedman
By The Family of Marjorie Cowin

Birthday of Michael Lowenberg
By Tricia & Jim Krohn
Honor of Bernice C. Moss
By Terri Hornberger

Rabbi Gerald J. Klein Memorial Cemetery Fund
Beautification and improvements of the Temple Emanu-El Cemetery
Memory of Alec Becker
By Arlene Lamark
Memory of Marian M. Goldberg
By Julie & Michael Lowenberg
Memory of Catalina Herskowitz
By Sheila & Richard Lerer, Kevin Lerer, Josh Lerer
Memory of Arno Weinstein
By Gerardo Weinstein
Memory of Ben Zale
By Rhona Streit

Rabbi Gerald J. Klein Garden Fund
Maintenance of the Klein Garden
Memory of Minette Berman
By Toni & Morey Silverman
Memory of Saul Sonny Essinfeld
By Joan Essinfeld
Memory of Helen Lansburgh
By Joyce & Alan Goldberg
Memory of Mike Levy
By Joanne & Steve Levy
Memory of Nicole Lidji
By Marilyn & Jack Rubin
Bar Mitzvah of Jacob Cohan
By Joyce & Alan Goldberg
Naming of Noa Esther Fertig
By Joni & Bob Cohan

Alex F. Weisberg Library Fund
Purchases of Judaic books, publications and entertainment media
Memory of David Jay Leibs
By Arlene Leibs
Memory of Jerry S. Leibs
By Arlene Leibs
Memory of Elizabeth Rosas Ruiz
By Alice Barnett
By The Centola Family
By Shari Markey
By Ellen K. McIntosh



GENERAL

Temple Emanu-El General Operating Fund

Support of Temple's general programs and events
Memory of Joan Altsuler
By Cheryl & Paul Gardner
Memory of Charles Balkin
By Stephanie & Dan Prescott
Memory of Alec Becker
By JoAnn & Robert Becker
Memory of Robert H. Broder
By Kim & Jeff Chapman
Memory of Madeline Covens
By Enid Robinson
Memory of Bernard Freed
By Diane & Gary Freed
Memory of Eleanor Goodman
By Rachelle Weiss Crane & Paul Crane
By Donna & Larry Olschwanger
By Kathy & Morris Palefsky
Memory of Evelyn P. Goodman
By Tricia & Jim Krohn
Memory of Catalina Herskowitz
By Tricia & Jim Krohn
Memory of J. Ronald Horowitz
By Cathy & Craig Glick
By Jeneane Pearlman
Memory of Nancy Horowitz
By Jeneane Pearlman
By Hannah Pollock
Memory of Albert M. Krohn
By Tricia & Jim Krohn
Memory of Nicole Lidji
By Jeff & Kim Chapman
By Mark Perkins
Memory of Irwin Lowenstein
By Carol & John Levy
Memory of Ruth Novick
By Michael Novick
Memory of Tina Novick
By Michael Novick
Memory of Sonia Philipson
By Kim & Jeff Chapman
By Rachelle Weiss Crane & Paul Crane
By Risa Gross
By Tricia & Jim Krohn
Memory of Jill Rose
By Mary Lee & Michael Broder
Memory of Bernice Steirn
By Wendy Lieman

Memory of Rose Hannah Sturman
By Milton Sturman
Memory of Sarah Sturman
By Milton Sturman
Memory of James Wallenstein
By Bess Hoffman
Memory of Stanley Wyl
By Lee & Paul Michaels
Memory of Ben Zale
By Cheryl & Paul Gardner
By Jeneane Pearlman
Appreciation of Beth Gold
By The Michael Broder Family
Appreciation of Harry Granoff
By Rita & John Phillips
Appreciation of Rabbi David Stern
By Mary Lee & Michael Broder
As a Contribution
By Rachelle Weiss Crane & Paul Crane
By Sara Cardona
Birthday of Morris Lampert
By Stephanie & Scott Rosuck

Temple Emanu-El Endowment Fund
Distribution from the Temple's foundation supporting Temple's programs
Memory of Susan Apter
By Linda & Ken Wimberly
Memory of Robert H. Broder
By Debbie & Marc Andres
By Sandy & Rabbi Barry Diamond
By Meredith Fried
By Cathy & Craig Glick
By Lindsay & Jeffrey Steinberg
Memory of Marjorie Cowin
By Sheryl & Gordon Bogen
Memory of Eleanor Goodman
By Cathy & Craig Glick
By Beth & Jim Gold
By Kay Ellen & Jake Pollack & Family
By Lindsay & Jeffrey Steinberg
Memory of Irwin Lowenstein
By Cathy & Craig Glick
Memory of Sonia Philipson
By Debbie & Marc Andres
By Sheryl & Gordon Bogen
By Meredith Fried
By Beth & Jim Gold
By Kay Ellen & Jake Pollack & Family
Memory of Jill Rose
By Debbie & Marc Andres
By Sandy & Rabbi Barry Diamond

Memory of Stanley Wyl
By Patti & Bob Aisner
By Barbara & Dennis DuBois
Birthday of Suzi Greenman
By Marilyn Fiedelman



MUSIC AND PRAYER

Music Fund
Enhancement of Temple music programs
Memory of Marjorie Cowin
By Linda & Randy Winski
Memory of Ron Fiedelman
By Ellen & Arnie Marks
Memory of Rochelle Levit
By Adele Hurst
Memory of Phyllis Mills
By Ettie & Melvin Weinberg
Memory of Burt Rosenberg
By Marlene & Richard Marks
Memory of Simon Sargon
By Peggy & David Millheiser
By Blanche & Jerry Weinberger
Memory of Ben Zale
By OriAnn Phillips & Scott McCartney
Appreciation of Cantor Vicky Glikin
By Elizabeth, Joel & Lauren Israel
By OriAnn Phillips & Family
Appreciation of Cantor Leslie Niren
By Dr. Cynthia Schneider & Dr. James Brodsky
Birthday of Barbara Thorman
By Gail Arbetter
Speedy Recovery of Si Pulitzer
By Blanche & Jerry Weinberger
Speedy Recovery of Nita Mae Tannebaum
By Blanche & Jerry Weinberger



ADULT PROGRAMS

Katherine F. Baum Adult Education Fund
Support for adult education programs
Memory of Lila Berlin
By Peggy & David Millheiser

Memory of Sam Marcus
By Rita Kahn
Memory of Sonia Philipson
By Rita Kahn
Memory of Lois Lurie Prager
By Karen Prager Eaves
Memory of Merrill Yalowitz
By Betsy & Todd Teitell

Henry D. Schlinger Ethics Symposium Endowment Fund

Support of the ethics symposium
Memory of Abner Aronoff
By Norma Schlinger
Memory of Pauline Schlinger Frankel
By Norma Schlinger



SOCIAL JUSTICE

Hunger Relief Projects
Collection of funds for hunger relief throughout the year, especially during High Holy Days and Passover
Memory of Jeanette Abrams
By Miriam Vernon
Memory of Allen Bogart
By Lynne Bogart
Memory of David R. Bonnheim
By Emma & Steve Geiger
Memory of Julie Cacamo
By Tara & Jeff Schiller
Memory of Gordon Cizon
By Toby Niger
Memory of Ann Cohen
By Harriet Cohen
Memory of Harry J. Feldman
By Helen Feldman
Memory of Mae Guckenheimer
By Miriam Vernon
Memory of Arnold Kurtz
By David & Cindie Kurtz
Memory of Ruth Bronstein Lewin
By Howard Polakoff
Memory of Nicole Lidji
By Sherilee & Richard Trubitt
Memory of Earl Morchower
By Bette & Gary Morchower
Memory of Fannie Rachofsky
By Helen Feldman
Memory of Jill Rose
By Adele Hurst

By Alyson & Joe Ray
Memory of Rose Rubenstein
 By Mindy & Rick Cohen
Memory of Ida M. Strasmick
 By Miriam Vernon
Memory of Esther Szor
 By Nancy & Jerry Szor
Memory of Irene Warshaw
 By Lynne Bogart
Memory of Charlotte Wolff
 By Lisa & Jim Albert
Memory of Ben Zale
 By Lisa & Jim Albert
 By Helen Feldman
As a Contribution
 By Ann Margolin
 By Faye & Howard Polakoff

The Jill Stone Tikkun

Olam Fund

Support of Temple's social justice programs including initiatives, advocacy, projects and lectures
Memory of Gordon Cizon
 By Mel & Katie Ayer
Memory of Irwin Alper
 By Diane & Murray Colton
Memory of Susan Apter
 By Alyson, Joe, Katie, Becca & Lexi Ray
Memory of Robert H. Broder
 By Cathy & Gary Golden
Memory of Evelyn Colton
 By Diane & Murray Colton
Memory of Jack Corman
 By Annette Corman
Memory of Ron Fiedelman
 By Stacy & Stuart Simon
Memory of David Genecov
 By Lisa Beckerman
Memory of Harold Kleinman
 By Rosie Stromberg
Memory of Peggy Sham
 By Shelley & Danny Wylie
Memory of James Wallenstein
 By Suzi & Jack Greenman
 By Elaina & Gary Gross
As a Contribution
 By Patricia & James Dye

Priscilla R. Stern Memorial

Literacy Fund

Support of literacy projects in the general and Jewish communities
Memory of Robert H. Broder
 By Ruthie & Alan Shor
Memory of Kayce Goldberg
 By Judy Roffman

Memory of Eleanor Goodman

By Suellen & A. J. Rosmarin
 By Fran, Jeff, Dani & Mollie Toubin
Memory of Nicole Lidji
 By Suellen & A. J. Rosmarin
 By Ruthie & Alan Shor
Memory of Irwin Lowenstein
 By Alyson, Joe, Katie, Becca & Lexi Ray
 By Suellen & A. J. Rosmarin
Memory of Esther Rosmarin
 By Suellen & A. J. Rosmarin
Memory of Dianne Betty Gordon Schonwald
 By Kim & Avrum Schonwald
Memory of James Wallenstein
 By Jill & Gary Stolbach
Memory of Rose Weinberg
 By Ettie & Melvin Weinberg
Memory of Charlotte Wolff
 By Cathy & Gary Golden
Memory of Ben Zale
 By Suellen & A. J. Rosmarin
Anniversary of Danna & Jamie Hayden
 By Ruthie & Alan Shor
Appreciation of Rabbi David Stern
 By OriAnn Phillips & Family
Birthday of Rabbi Nancy Kasten
 By Ruthie & Alan Shor
Birthday of Betsy Kleinman
 By Ruthie & Alan Shor
Birthday of Julie Weinberg
 By Ruthie & Alan Shor
Naming of Rose Gerhardt
 By Norma Schlinger
Speedy Recovery of Julie Weinberg
 By Ruthie & Alan Shor

Social Justice Fund for

Youth Education

Support of worthwhile educational causes for youth in need
Memory of Frances Goodman
 By Marlene Glasser
Memory of Sonia Philipson
 By Pam & Steven Pluss
Memory of Richard "Dick" Presby
 By Mindy & Mark Tulbert
Memory of Betty Rosenfeld
 By Alyson, Joe, Katie, Becca & Lexi Ray



YOUTH AND EARLY CHILDHOOD EDUCATION

William P. Budner Youth Library Fund

Purchases of Judaic books and publications for students
Memory of Moe Kaplan
 By Roz & Art Kaplan
Memory of Barbara Tavel Lipnick
 By Kathy & David Lipnick
As a Contribution
 By The Carrasco Family

Early Childhood Education

Center (ECEC) Fund

Support of ECEC programs
Memory of Mace Abrams
 By Marilyn "Buzzy" Gamble Owens
Memory of Dorothy Barnfeld
 By Cindy Goldman
Memory of Robert H. Broder
 By Jamie & Cameron Gerard
Memory of Marjorie Cowin
 By Frada & Alan Sandler
 By Janice & Art Weinberg
 By Ethel Zale
Memory of David Lee Frankfurt
 By Ethel Zale
Memory of Nancy Horowitz
 By Alyson, Joe, Katie, Becca & Lexi Ray
 By Ethel Zale
Memory of Max Cooper Hurst
 By Adele Hurst
Memory of Beth F. Kahn
 By Ethel Zale
Memory of Bernard Levy
 By Frada & Alan Sandler
Memory of Sonia Philipson
 By Jamie & Cameron Gerard
 By Janice & Art Weinberg
Memory of James Wallenstein
 By Naomi Bloom
Memory of Ben Zale
 By Jamie & Cameron Gerard
 By Jamie & Eddie Tonkon
 By Ethel Zale

Appreciation of Rabbi David Stern

By Liz & Ian Levenson
As a Contribution
 By Cindy & Alex Berger III
 By Janelle & Larry Friedman
 By Dassi & Gillad Matiteyahu
 By Bob Miller
 By Debbi Levy & Barry Rothschild
 By Linda & Michael Shabot
 By Erin Stich
 By KG Private Educators, LLC
Honor of Elio Lipnick
 By Janet Lipnick
Honor of Estela Lipnick
 By Janet Lipnick

Gina Rosenfield Levy Greene Family Camp Scholarship Fund

Financial assistance to families for Greene Family Camp
Memory of Baila B. Bloom
 By Jacque & Freddy Roberts
Memory of Farra J. Bloom
 By Jacque & Freddy Roberts
Memory of Louis M. Bloom
 By Jacque & Freddy Roberts
Memory of Celia Gellman Glast
 By Phyllis & Phil Stoup
Memory of Nelson Lerner
 By Phyllis & Phil Stoup
Memory of Audree Meyer
 By Phyllis & Phil Stoup
Memory of Sarah Reuler
 By Leslie & Freddy Brotsky & Rachel Prock
Memory of Patricia Seeman
 By Alyson, Joe, Katie, Becca & Lexi Ray
Memory of Ben Zale
 By Tricia & Jim Krohn
Marriage of Sam Richardson & Dani Glazer
 By Sarith & Rich Abramowitz

Paul Lande Summer Camp Scholarship Fund

Scholarships for children to attend Jewish summer camp
Memory of Nethie K. Lande
 By Shari & Jack Vine
Memory of Paul Lande
 By Shari & Jack Vine
Memory of Ben Zale
 By Alyson, Joe, Katie, Becca & Lexi Ray

Lomdim Project

Support of an open and inclusive community for YL+E children with special needs
Memory of Robert H. Broder
 By Alyson, Joe, Katie, Becca & Lexi Ray

Metz Youth Fund

Scholarships for Jewish activities sponsored by Temple or other Jewish organizations
Memory of Eleanor Goodman
 By Ellen & Allen Metz

David B. Shalom Religious Education Fund

Financial assistance for religious education for Temple members
Memory of Ben Zale
 By Amy & Richard Blum

Martin and Charlotte Weiss Religious School Fund

Scholarships for YL+E fees, books and additional expenses
Memory of Ceil (Cecile) Echt
 By Toby Niger
Memory of Natalie Goldstein
 By Lynn & Jay Staub
Memory of Betty Rosenfeld
 By Lynn & Jay Staub

Youth Scholarship Fund

Financial assistance to families for participation in youth programs
Memory of Leonard Goodman Jr.
 By Karla & Larry Steinberg
Memory of Libby Lipp
 By Gaylyn & Howard Lipp
Memory of Charles Schlange
 By Dana & Gail Lawrence
Memory of James Wallenstein
 By Karla & Larry Steinberg
 By Robin Kosberg
As a Contribution
 By the Choosing Judaism Class of Fall 2022
Conversion of DR Hanson
 By Robin Kosberg
Conversion of William Hernández
 By Robin Kosberg



WRJ

WRJ/Sisterhood of Temple Emanu-El

Support of Women of Reform Judaism
Memory of Phyllis Mills
 By Celia Saunders & Minnette Klein



Elise Plaksen, third from right, bottom row, during her 2013 Israel trip with the Women of the Wall project.

Connected Across the Miles

By Livia Bernstein

Israel is a special place. Whether you've never been before, only have been once, or go annually, you never forget the connection you create with the land, culture and people of Israel. As Temple joins in the Dallas Community Mission to Israel this fall, we checked in with the mission chairs and two members with very special memories of trips with Temple Emanu-El.

Belonging: Teresa Rosenfield (2022)

My favorite memory of Israel is driving down to Masada. With the Dead Sea on one side and the arid mountains on the other, I would typically find this type of topography ugly. However, during this early morning drive, it was so beautiful, so still, and so peaceful. In a country that is bustling with people everywhere, this journey had a quiet spirituality to it that connected me in a way the Kotel could not.

Before I visited Israel for the first time this past summer, I did not feel a personal connection to Israel. It was not a part of my identity. Preparing for the trip and the trip itself created a connection in which I would say that I am passionate about Israel. I feel like, even as a Jew by Choice, Israel "belongs" to me as much as anyone else in the Diaspora. I feel a deeper connection so much so that I wish I was 20 years younger so I could make aliyah.



Lance and Teresa Rosenfield, with Sophie, enjoying the sights of Israel.

Every Step a Story: Elise Plaksen (2013, 2017)

The complexity of the country, the food, rich cultural heritage and the ability to actually touch and see and feel all of that with each step you take is what I love the most. It's also what makes me feel the most connected to Israel. The idea of how important Israel is to the greater Jewish people is a beautiful thing. My best memory of my travels to Israel has to be the very first time I walked through the Machane Yehuda market, also known as the shuk. There is so much going on and something new to see everywhere you look, it is absolutely breathtaking.



Elise Plaksen at a lighthearted stop in Israel in 2013.



Temple members Debbi K. Levy and Barry Rothschild see the sights on their trip last year in preparation for leading the Dallas Community Mission.

Join Us! Debbi K. Levy and Barry Rothschild (2018, 2022, November 2023)

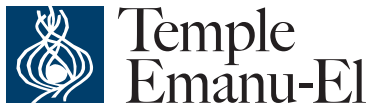
We invite you to expand your edges, and take in Israel and all her beauty, as the Jewish Federation of Greater Dallas takes sacred care of us. Will the mild weather and climate of November, the opportunity to touch the Western Wall, or even the culinary delights of our homeland lure you to be a part of the upcoming Community Mission Trip? We are hoping your answer is, "Yes, I am registering!"



Temple is 150, Israel's 75, Let's Go Together

Rabbis David Stern and Debra Robbins will help lead this trip, which is our congregation's Israel journey in this year of dual celebrations of Temple's 150th birthday and Israel's 75th.

Learn more about the trip on November 7-13, 2023 at jewishdallas.org/ISRAELMISSION



8500 Hillcrest Road | Dallas, Texas 75225
214.706.0000 | tedallas.org

PERIODICALS
Time Sensitive Material

The Window (USPS #017-824) is published six times per year by Temple Emanu-El Congregation, 8500 Hillcrest Road, Dallas, TX 75225-4204. Periodicals Postage Paid at Dallas, Texas.

POSTMASTER, send address changes to:

Temple Emanu-El Window
8500 Hillcrest Road
Dallas, Texas 75225-4204.

