

The Window

Imagine...

Future Forward:
Guide to types of giving

Meet TE150's artful leaders

The Learning Life: Scholars,
clergy classes and more

CONTENTS

PRAYER AND SPIRITUALITY

A Message from Rabbi David Stern	3
Torah Readings for January and February	4
Homecoming at TE150 Shabbat	5
Celebrating Debbie Friedman's Legacy	5



THE FUTURE

Meet Liz Chalfant and Pam Pluss:	
TE150 Creations Chairs	6
TE150 Calendar	8
Ways to Give at Temple	10
Annual Fund Spotlight	11
Tributes	12

COMMUNITY

Meet Temple Staff	15
Feeling All Right: A Billy Joel Purim	16
Celebration and Remembrance	17
Sunday Sounds in Stern	20

LEARNING

Earth-friendly Ideas for Families	21
ADL Workshop for Parents	22
Bestselling Parenting Author Visits Temple	23
Women Who Weave	24
Lefkowitz Lecture to Explore Women's Impact on Temple	25



JUSTICE

Temple Volunteers Welcome	
Ukrainian Refugee Family to Dallas	26

ISRAEL

Reflections on Israel Journey	27
Dallas Community Mission	
November 7-13, 2023	27



**Temple
Emanu-El**

Founded in 1872
8500 Hillcrest Road | Dallas, Texas 75225
214.706.0000 | tedallas.org

Temple President
Beth Gold
Executive Director
Meredith J. Fried

Clergy
Rabbi David E. Stern
Rabbi Debra J. Robbins
Cantor Vicky Glikin
Rabbi Amy Rossel
Rabbi Kimberly Herzog Cohen
Cantor Leslie Niren
Rabbi Michael Lewis

**Department of
Congregational Advancement**
Sandy Diamond, Senior Director

The Window
Connie Dufner, Senior Director
of Communications
Ann Wilson, graphic designer
Livia Bernstein, writer
Ilana Josephson, writer

Our Community's Response to a Modern Exodus



In the Book of Exodus, which we begin this month, the individual dramas of Genesis become the drama of a people. The slavery of an individual Joseph becomes the slavery of the Israelites; Jacob's wrestling towards identity becomes a people's formation in the desert; the creation of scattered shrines by the patriarchs becomes the construction of the desert Tabernacle for the whole community.

And most of all, the physical journeys of the individual patriarchs and matriarchs in Genesis become in Exodus the sojourn of the people Israel, as the story of the Exodus from Egypt takes center stage. The Book of Genesis was already characterized by multiple departures; now emigration and immigration, leave-taking and arrival, become the defining birth story of the Jewish people.

So how appropriate that as the Book of Exodus progresses, on the Shabbat of Feb. 10-11, our congregation will once again participate in Refugee Shabbat, a project of HIAS, the world's oldest refugee agency. Formally established as the Hebrew Immigrant Aid Society in 1902, HIAS represented a continuation of several organizations that had worked through the 1880s and 1890s to assist Jews fleeing pogroms in Russia and Eastern Europe. Originally set up by Jews to help fellow Jews, HIAS has broadened its mission to become a multifaceted humanitarian aid and advocacy organization, dedicated to helping forcibly displaced persons around the world in keeping with the Jewish ethical imperative to aid and welcome the stranger.

As we approach the one-year anniversary of Russia's invasion of Ukraine on Feb. 24, the work of HIAS, and our congregation's own longstanding commitment to immigrant rights, are more urgent than ever. Russia's war on Ukraine brought the number of displaced people in the world to a record 100 million. In the first months following the invasion, one-third of Ukrainians were forced from their homes, resulting in the largest displacement crisis in Europe since World War II.

That is why Temple is proud to be one of 23 U.S. congregations participating in HIAS Welcome Circles, a resettlement initiative that began with Afghan refugees and has now expanded to include refugees from Ukraine. Through this program, we were thrilled to welcome the Veremiov family to Dallas in December (see story and photos on p. 26).

As reported in the previous issue of the Window, the family fled their home in Dnipro, Ukraine at the beginning of the war, making their way to Poland and now to the embrace of our community. In December, Rabbi Kimberly Herzog Cohen spoke movingly about the experience of welcoming them at the airport, and she earlier summed up the resonance of this project with Temple's core mission:

"Beginning with Cantor Vicky Glikin's Passover trip to Warsaw and direct contributions of volunteers, we are now expanding the circle of impact. This is a continuation of Temple's ongoing social justice work, in honor of our 150th year, as well as ensuring our legacy of *tikkun olam* for our future."

continued on p. 4



Temple volunteers wait to welcome the Veremiov family to Dallas.

Thanks to the efforts of remarkable volunteers supported by Rabbi Herzog Cohen and Erica Strauss, we have begun to create a growing support system for the Veremiov family: parents Dmytro and Inna, and their three children, Yuliia, Mark and Emili. The enterprise of welcoming the Veremiov family is ongoing, and will change as time goes on. As of this writing, we invite you to join this meaningful work in any of these ways. (For further information on any of these volunteer opportunities, please contact Erica Strauss at estrauss@tedallas.org.)

- Provide a meal or host the family for a meal in your home
- Give rides to the family when needed
- Donate to Temple's Disaster Relief Fund, which will not only help with costs of resettling the Veremiov family, but also provide vital humanitarian aid (food, clothing, medicine and more) to refugees and internally displaced people who are still in Ukraine.
- Contact our political leaders and encourage continued support of Ukraine
- And of course, please join us on either Friday night or Saturday morning of HIAS Shabbat to hear powerful testimonies, and to share and gain spiritual strength for the vital work ahead.

Scan the QR code to give to the Disaster Relief Fund.



HIAS Shabbat takes place this year on Parashat Yitro, the Torah portion which brings us the Ten Commandments. The Ten Commandments begin: "I am the Lord your God who brought you out of the land of Egypt." The first verb in the world-changing revelation is "brought you out": the Ten Commandments start by declaring God's presence as deliverer, support and shelter for our immigrant ancestors. Divine work then, sacred work now: may we make it our own in a new year of responsibility and promise.



Weekly Torah Readings January/February 2023

January 6-7: Va-y'chi, Genesis 47:28 – 50:26

January 13-14: Sh'mot, Exodus 1:1 – 6:1

January 20-21: Va-eira, Exodus 6:2 – 9:35

January 27-28: Bo, Exodus 10:1 – 13:16

February 3-4: B'shalach, Exodus 13:17 – 17:16

February 10-11: Yitro, Exodus 18:1 – 20:23

February 17-18: Mishpatim, Exodus 21:1 – 24:18

February 24-25: T'rumah, Exodus 25:1 – 27:19

SHARE YOUR MAZEL TOV MOMENTS WITH TEMPLE

We want to honor you when you experience joyful events in your lives. Beginning this month, we will expand our birthday greetings to invite those who have marked a simchah to be recognized at Shabbat services on the fourth Friday of every month. Birthday celebrants will continue to be honored, as well as those marking events such as a special anniversary, a wedding, graduation or conversion.

If you would like to schedule a personalized moment of blessing to mark a milestone, please contact a member of clergy.



CHEVER TORAH GUEST SCHOLAR



Rabbi Andrea Weiss, provost and professor at Hebrew Union College-Jewish Institute of Religion, will teach Chever Torah on Saturday, Jan. 21 in person and online at 9AM. As a

nod to Temple's 150th year and the 50th year of women in the rabbinate, we will be learning from *The Torah: A Women's Commentary*, for which Rabbi Weiss served as associate editor.

Rhea!

The evening of Dec. 9, the TE150 Shabbat called Prayers of the Generations, was a homecoming for many as we explored Temple prayer through its 150-year history.

The evening's biggest cheerleader was Rhea Wolfram, 103 years young, who delighted our community with her beautiful smile and heartfelt greetings.

"It made me recall all the wonderful memories of Olan in the past," she says. "It felt like Temple Emanu-El hugging all of us. It was the first time that many had been in the sanctuary in two years because of Covid. We have the finest congregation in the country. We have energy! We have caring! We all feel embraced when we walk into our temple and see friends and connect with other people."



Rhea with Rabbi David Stern



Rhea with Mark Zilbermann

SING A NEW SONG

Shabbat Service | February 3, 2023

6:15PM | Stern Chapel



Debbie Friedman (1951-2011), transformed Judaism through her music. Celebrate Shabbat Shirah, the Sabbath of Song commemorating the Exodus from Egypt, with some of Debbie's best-known tunes, including "Miriam's Song" and "Mi Shebeirach." The service will feature Cantors Vicky Glikin and Leslie Niren, as well as the Temple Emanu-El Choir.



Hearts for Art – and Temple



Liz Chalfant and Pam Pluss



Liz Chalfant and Pam Pluss bring deep passion and impressive resumes to their Temple and community involvement. So it was an easy “yes” for them to co-chair the Creations events celebrating the role of the arts over Temple’s 150 years.

Just being a member during the celebratory period marking 150 years of Temple Emanu-El is exciting, but being asked to chair the Creations events was an honor I couldn't refuse," says Liz. "I viewed this as a once-in-a-lifetime opportunity to partner with Temple leadership, clergy, and lay leaders to engage our community through various art forms and experiences."

Pam, a third-generation Temple member, has always gravitated toward the arts in her volunteer life, including the cultural arts committee at Greenhill School and serving on the MADI Art Museum board. Liz, a second-generation Temple member, has held many significant roles in the Early Childhood Education Center and currently serves as ECEC Steering Committee chair in addition to her work on the Board of Trustees.

They are thrilled with the success of the tours of the Dalí/Vermeer exhibit at the Meadows Museum and the Octavio Medellín exhibit at the Dallas Museum of Art, held in December and earlier this month. And they are working tirelessly toward Light Years, an arts and technology experience on March 25 that will bring Temple and its community partners together to participate in a breathtaking transformation of the campus.

"Art and music are important ways to connect to the Temple spiritually and to each other," says Pam. There are so many ways we interact with the art and architecture of Temple that we don't even realize. Art and music reach people on an emotional level and get people talking about how they feel about something. That is what I find inspiring."

What is your perception of the importance of art in Temple and in Jewish life?

Pam: After working on this committee and researching the story behind some of the art at Temple, I watched a video in which Rabbi Levi Olan talks about religion itself as an art form. In the video produced for Temple's 125th anniversary, titled "A Legacy of Art and Architecture," he states: "It is an experience that must be fashioned so that anybody who comes to it gets an experience that he doesn't get anywhere else." Rabbi David Stern expands on this thought: "If religion is art then it must touch a diverse group of people in diverse ways and can touch the same individual in diverse ways at different times. So, there may be times when the Jewish tradition serves as a sort of intellectual stimulus and there may be times when it touches our hearts, in the same way that art can be challenging to our minds and challenging to our souls at the same time."

That to me describes why the art of Temple is an important part of our history as well as our present and our future.

The Light Years event, produced by AURORA, is going to be unlike anything we've ever seen. Can you give us a sneak peek?

Pam: We hope that the Light Years event will present an art experience that will be different, and will make you look at things differently. We hope to offer something unexpected as well as celebrate the beauty in our story and in our mission. There will be art to look at and to interact with. We want everyone to come and experience it together.

Liz: Experiencing the Light Years event with the community is an additional layer to the art. We truly believe this is a night people will be talking about when planning the bicentennial celebrations 50 years from now.

Why is it so important for Temple to throw itself a fabulous, 15-month birthday celebration?

Pam: Temple has a history deeply intertwined with the history of Dallas. We want everyone to appreciate the impact that Temple members and Temple clergy have had on shaping the city and growing it into the Dallas we know today. It takes time to tell a story that is 150 years long.

Liz: Celebrating our history helps remind us that we play an important role in how we can shape the world and the community that we live in. We know that a major component of Judaism is looking back and remembering where we came from, and as Temple celebrates 150 years, there's no better way to build a foundation that inspires the future than celebrating and remembering what we've already done.

ABOUT PAM

Hometown: Dallas
Family: Husband Steven, children Molly and Henry; parents Joan and Jay Beck; brothers Michael and Gary Beck
Work life: Retired corporate marketing executive; professional volunteer

ABOUT LIZ

Hometown: Dallas
Family: Husband Alex, children Sloan and Graham
Work life: "I work in residential real estate which I've been passionate about since growing up on Swiss Avenue, a street with beautiful, historic homes."

CREATIONS

MARCH 25, 2023

In the evening, in Temple's beautiful outdoor spaces, beginning with Havdalah

Don't miss this first-of-its-kind Temple experience, as our campus becomes transformed through light, sound and technology. Temple has collaborated with AURORA, a Dallas public arts organization at the intersection of art, technology and community, for an exclusive art event that will showcase new media art forms while celebrating our history. The event is family-friendly, with food and beverages provided.

TE150
1872
2022

LIGHT YEARS

An Innovative Art and Technology Experience

Produced by **AURORA**



FOUNDATIONS

Prayer & Spirituality

January 13-14, 2023

DAN NICHOLS

In the PRAYground

Spend the weekend in joyful prayer and meaningful reflection with songwriter and prayer leader Dan Nichols. In case you miss it, recordings of the services can be found on tedallas.org/livestream.

Register at tedallas.org/events



FOUNDATIONS Torah

JANUARY 27-28 | RABBI DAVID LEFKOWITZ LECTURE

Our Reform Jewish Story

Rabbi Carole B. Balin, Ph.D., one of Reform Judaism's leading scholars on gender studies, will honor Temple's 150th anniversary with a weekend of learning designed especially for Temple that recognizes the role of women in our community and in our movement (see story on p. 25).

The Rabbi David Lefkowitz Memorial Lectureship is made possible by grants from the Rosenstein-Sonnenheil Family Fund of the Temple Emanu-El Foundation and the Florence Foundation.

FEBRUARY 9, 16 AND 23; MARCH 2 | STERN CHAPEL | 7PM

The Questions that Transform

The Temple clergy salute 150 years with a series of classes to explore challenging texts, delve into historical documents, weave song and story, and together, celebrate the gift of learning in sacred community. In person and online.

Feb. 9: How do we believe?

with Rabbi David Stern and Rabbi Kimberly Herzog Cohen

Feb. 16: How do we pray?

with Rabbi Debra Robbins and Cantor Vicky Glikin

Feb. 23: What is revelation?

with Rabbi Amy Rossel and Rabbi Kimberly Herzog Cohen

Mar. 2: What's next?

with Cantor Leslie Niren and Rabbi Michael Lewis

Register for all TE150 events at tedallas.org/events.

The registration forms will appear under the calendar description of the event. Some events may not yet be open for registration, so keep checking for opportunities to register.



REDEDICATION

WINTER AND SPRING 2023

Here's your chance to begin shaping the future of Temple! The Rededication committee of TE150 is beginning a listening campaign, which will inform the choices of the final celebratory weekend next fall. Stay tuned!



Guide to Giving

As we recognize our 150th anniversary, Temple is honoring the past, celebrating in the moment and dreaming about the future. The Ensuring Our Future endowment campaign is designed to provide Temple with financial stability for generations to come. This guide explains the key differences between Annual Fund and endowment giving, and why both are critically important. Questions? Contact Sandy Diamond, Senior Director of Congregational Advancement, sdiamond@tedallas.org.

Annual Fund and Endowment: What's the Difference?

Together, the Annual Fund and endowment distributions provide approximately \$3 million to Temple's operating budget. Without these funds, dues would need to be set approximately 60% higher than current levels.

The funds operate very differently.

The Annual Fund is conducted each September-June, and funds raised help pay Temple's current year operating expenses. It is Temple's highest fundraising priority and your yearly commitment is vital to carrying out Temple's mission.

Endowment campaigns are typically conducted once in a generation. Temple's last endowment campaign was in 1999-2000. Endowment funds are invested and held in perpetuity. The only distributions made by the endowment are from earnings on the invested funds.

In the past 20 years, approximately \$15 million of endowment investment earnings have been distributed to Temple and our cemetery, yet the endowment balance has increased to approximately \$32 million. The goal of the current campaign is to raise an additional \$45 million, which will allow the Temple Foundation to more than double the annual distributions to Temple.

Annual Fund Impact on Temple's Budget

2021-2022

AMOUNT RAISED
\$1,720,029

2021-2022

PERCENT OF OPERATING BUDGET
10.55%

Endowment Impact on Temple's Budget

2022

7.7%

TE 150 **GOAL**

INCREASE TO
15%

Endowment Growth

2000

**\$3.85
MILLION**

2022

**\$31.9
MILLION**

TE 150 **GOAL**

RAISE ADDITIONAL
\$45 MILLION

Glossary of Giving

Membership Dues: Temple's primary source of operating revenue, paid annually

Note: Finances are never a barrier to participation at Temple. Confidential assistance is available.

Annual Fund: Direct funding for initiatives and operational enhancements that membership dues do not cover, conducted by Advancement office



Tribute Gifts: Ongoing gifts to honor, recognize or remember friends, family, clergy or staff

Endowment: Gifts to Temple Foundation, from which a portion of investment earnings is drawn annually to support specific areas of Temple

Planned Giving: A gift that donors include in their estate planning

Capital Giving: Periodic fundraising initiatives to fund significant building needs. Temple's last capital campaign funded the expansion of Temple and included Stern Chapel and Tycher Gathering Space

Ann and Josh Wool

BY ILANA PAIKOFF

The Annual Fund is Temple's highest fundraising priority. The money raised every year helps support the richness and depth of Temple life. This spotlight helps introduce our community to the dedicated leaders who have given of their time and financial resources to ensure its success.

For Ann and Josh Wool, supporting the Annual Fund isn't just giving. It's giving back. They have been Temple members since 2017. She is originally from Honolulu, Hawaii and is a stay-at-home mom to Arel, 6, and Sammy, 3. Josh is from St. Louis and works as an investment manager.

Tell us about your Temple journey.

Ann: After having children, it became increasingly important to us to raise our children Jewish in a community that is loving, nurturing and spirited. I am also in the process of converting to Judaism and Temple has been extremely supportive. When Josh and I discovered the Early Childhood Education Center, we fell in love, and our kids did too. Driving by Temple always causes Arel and Sammy to ask when they can go back to ECEC for school.

Josh: When I moved to Dallas, Temple Emanu-El was so unique in the sense that it was this big thriving congregation unlike what I experienced as a kid in St. Louis. I no longer felt like going to Temple was something I was forced to do. I am always excited about visiting Temple's various programs and services with our kids. The welcoming community helps us bring Judaism into our kids' lives and we are eternally grateful for the friends we've made through Tot Shabbats and other children's events.

Young adults have many financial commitments at a time when they are early in their careers. Why is it so important to establish a pattern of giving now?

Ann: Whenever we visit Temple, I see people working so hard to make Temple the amazing place it is. Even though I didn't grow up religious, the beauty that Temple holds makes prayer, religion and connection easy. In order for Temple to provide a similar impact on future generations, it needs support from people like us.

Josh: The value we get in return is just astounding. Since we love giving to Temple, we simply cannot take anything we experience for granted. Growing up in a non-vibrant synagogue makes me want to help Temple even more. Over the years, we have made the most amazing personal relationships with many people in ECEC and the Temple community. Giving back to Temple just feels right.

What made you say yes to the Annual Fund?

Ann: Since Temple feels like our second home, we like to treat it almost as our own. With your own house, you do the upkeep, take care of bills and work on making it a space where other people will feel loved and safe. It's like taking care of family.

Josh: We feel deeply involved and want to take care of our connection with Temple. Some people donate to their alma mater



L-r: Arel, Ann, Sammy, and Josh

Giving back
to Temple just
feels right.

for similar reasons; however, giving to Temple secures the future instead of dwelling on the past. If I grew up in a temple similar to Temple Emanu-El, I would have loved going to Jewish events as a child. I want to help ensure the future of the next generations.

Gifts of Memory, Honor and Gratitude



OUR CONGREGATION

Dora Aronson Helping Hands Fund

Distributions by Rabbi David Stern to individuals in need of financial assistance, particularly in dire situations

Memory of Lilly Berman Bluestein

By Susie Litman

Memory of Abe R. Cohen

By Marilyn Fiedelman

Memory of Bill Colen

By Artyce Colen

Memory of Bud Greenwald

By Janet & John Eichmeyer

Memory of Yvonne Hill

By Tina Wasserman

Memory of Rochelle Levit

By Marilyn Fiedelman

Memory of Marjorie Levy

By Lynn & Bob Behrendt

By Artyce Colen

By Cheryl & Randy Colen

By Irma Grossman

Memory of Joyce F. Sallinger

By Carolyn Helfman

Memory of Frances Sheff

By Julie & David Kronick

Memory of Jerome Skibell

By Marilyn Fiedelman

Appreciation of Rabbi

David Stern

By Kathy Levy

By Sally & Bob Rosen

By Nancy & Jerry Szor

Susan Salom Clergy Good Works Fund

Distributions to charitable organizations, individuals in need or community causes by Temple's clergy

Memory of Scott Birnbaum

By Sondra & Alan Perkins

By Judy & Robb Steinberg

Memory of Elayne Brown

By Marcie & Michael Brown

Memory of Larry Genender

By Leslie & Bob Krakow

Memory of Beverly Goldman

By Joe Goldman

Memory of Henry M.

Kaufman

By Joanne & Charles Teichman

Memory of Harold Knop

By Nancy & Richard Fincher

Memory of Helen

Landsburgh

By Michael Zeve

Memory of Marjorie Levy

By Hannah Beren

By Gary Kahn

By Rita Kahn

By Sheri & Jack Vine

Memory of Susan Richman

By Rosie Stromberg

Memory of Marlene Schultz

By Nancy Ungerman

Memory of Jerome Skibell

By Joan Skibell

Memory of William B.

Spector

By Gwen Spector

Memory of Igor Statnikov

By Mark Statnikov

Memory of Marilyn Tonkon

By The Tonkon & Rolnick

Families

Appreciation of Gail Arbetter

By Nancy & Richard Fincher

Appreciation of Cantor

Vicky Glikin

By Daniel Rabkin

By The Sayah Family

Appreciation of Rabbi

Kimberly Herzog Cohen

By The Gross Family

By Sondra & Alan Perkins

Appreciation of Cantor

Leslie Niren

By Joe Goldman

Appreciation of Rabbi

Debra Robbins

By Shelley & Jerome Galant

By Debbie & Alan Pastel

By The Sayah Family

By Mark Statnikov

Appreciation of Rabbi

David Stern

By Michael Hurst

By Ellen & Jerry Jones

By Joan Skibell

By Susan & Robert Sugerman

By Sharon Balaban & Paul

Buxt

By The Tonkon & Rolnick

Families

By Michael Zeve

Appreciation of Temple

Clergy

By Ragen & Roy Elterman

Bar Mitzvah of Dustin Sayah

By The Sayah Family

Bat Mitzvah of Madison

Johnson

By Ellen & Jerry Jones

Honor of Cantor Vicky Glikin

By Cindy & Mitch Moskowitz

Honor of Temple Clergy

By Ragen & Roy Elterman

Marriage of Noa Buxt &

Adam Sugerman

By Susan & Robert Sugerman

By Sharon Balaban & Paul

Buxt

Marriage of Lara Gross &

Daniel Oppenheimer

By The Gross Family

Naming of Dustin Joplin

By Marcia Grossfeld

Anne & Sam Kesner Caring Congregation Fund

Assistance for Temple members through all phases of life including hospitalization, elder care, military service, mental health challenges and grief

Memory of Debbie Freed

By Diane & Michael Hudson

Memory of Marjorie Levy

By Susan & Michael Klaiman

Memory of Miriam Satz

By Alyson & Joe Ray

Memory of Marilyn Tonkon

By Jan & Tom Timmons

Anniversary of Maureen &

Michael Berger

By Sheri & Bruce Abernathy

As a Contribution

By Gwen Spector



OUR TEMPLE AND CEMETERY

Rose Marion and Lee H. Berg Building Fund

Upkeep and maintenance of our historic building

Memory of Barney Barshop

By Jerry Barshop

Memory of Wauscel Barshop

By Jerry Barshop

Memory of Scott Birnbaum

By Shirley & Marvin Hoffman

Memory of Anatoliy

Chernyavski

By Sofiya Samsonova

Memory of Elyn Crohn

By Helaine Trachtenberg

Memory of Mary Crohn

By Helaine Trachtenberg

Memory of Fannie

Trachtenberg Green

By Helaine Trachtenberg

Memory of Robert Hirsh

By Karen, Rick & Doodle

Ebersson

Memory of Rochelle Levit

By Julie & Bob Herman

Memory of Leslie Levy

By Margie Landau

Memory of Marjorie Levy

By Mary Bloom

By Gertrude Sher

By Ethel Zale

Memory of Nathan Melnick

By Cynthia & Lester Melnick

Memory of Marilyn Tonkon

By Ethel Zale

Memory of Roberta Weiss

By Sandy & Rabbi Barry

Diamond

Appreciation of Beri

Schwitzer

By David Kaplan

As a Contribution

By Marcy Layne Babcox

105th Birthday of

Leah Goren

By John Goren

Temple Emanu-El Cemetery Endowment Fund

Distribution from the Temple's foundation supporting the maintenance and improvement of the cemetery grounds

Memory of Emma Purvin Coleman

By Marilyn Golman

Memory of Mamie Selber

Coleman

By Marilyn Golman

Memory of Shelley Coleman

By Marilyn Golman

Memory of Alvin Golman

By Marilyn Golman

Memory of Marjorie Levy

By Lois Wolf

Memory of Yetta Meyer

By Steve Levine

Dorothy and Henry Jacobus Archives Fund

Support of special exhibits from our Archives

Memory of Marjorie Levy

By Sheryl & Gordon Bogen

Rabbi Gerald J. Klein

Memorial Cemetery Fund

Beautification and improvements of the Temple Emanu-El Cemetery

Memory of Adelaide Cohn

By Mary Ann Lustig

Memory of Isadore Cohn

By Mary Ann Lustig

Memory of Vely Martin del

Campo

By The Trillo Family

Memory of Marilyn Tonkon

By Joyce & Alan Goldberg

Memory of Hannah Trillo

By The Trillo Family

Rabbi Gerald J. Klein

Garden Fund

Maintenance of the Klein Garden

Memory of Frances Coleman

By Sandy & Dan Gorman

As a Contribution

By Alan & Sherri Darver



GENERAL

Temple Emanu-El General Operating Fund

Support of Temple's general programs and events

Memory of Scott Birnbaum

By Amy & David Leifer

Memory of Vera Block

By Jan & Tom Timmons

Memory of Ralph Bubis

By Jan Watson

Memory of Carol Burnett

Elieff

By Tom Elieff

Memory of Norman H. Gross

By Gary Gross

Memory of Bob Haney

By Jan & Tom Timmons

Memory of Ruth Levy

By Nancy Rosenthal

Memory of Marjorie Levy

By Becca & Allen Bodzy

By Lori & Rick Golman

By Debbie & Michael Shtofman

By Betty & Steve Silverman

By Audrey & Stanton Unell

By Debra & David Weintraub

Memory of Jules Novick

By Michael Novick

Memory of Karen

Samuelsohn

By Jackie & Steve Waldman

Memory of David Alan Vogel

By Marguerite Burtis & Peter

Vogel

Memory of Roberta Weiss

By Jan & Tom Timmons

Appreciation of Rabbi Debra Robbins

By Nancy & Richard Fincher
As a Contribution
By Jay Beck
By Tina & Richard Wasserman
By Jeff York
Honor of Reese Caroline Wender
By Marcia & Joel Peck
Marriage of Taylor & Jake Teichman
By Debbie & Marc Andres

Temple Emanu-El Endowment Fund

Distribution from the Temple's foundation supporting Temple's programs
Memory of Len Gelstein
By Beth & Jim Gold
Memory of Ben W. Gruber
By Toby Gruber
Memory of Harold Kleinman
By Beth & Jim Gold
Memory of Carmen Schneider
By Beth & Jim Gold
Memory of Marilyn Tonkon
By Judy & Ron Foxman
Memory of Roberta Weiss
By Beth Gold
By Lindsay & Jeffrey Steinberg



MUSIC AND PRAYER

Music Fund

Enhancement of Temple music programs
Memory of Frank Belzacki Bell
By Betty Jo & David Bell
By Louise & Jack Bell
Memory of Harold Kleinman
By OriAnn Phillips & Scott McCartney
Memory of Marjorie Levy
By Andrea & Norm Bleicher
Memory of Susan Levy
By OriAnn Phillips
Memory of Frances Sheff
By Michelle & Ricky Rickoff
Memory of Sam Susser
By Rebecca & Albert Vaiser
Memory of Roberta Weiss
By Gayle Johansen

Appreciation of Cantor Vicky Glikin

By Ellen & Jerry Jones
By Susan Kaminsky
Appreciation of Cantor Leslie Niren
By Ellen Presby & Tom Mills
By Sue & Marcel Weiner
Bat Mitzvah of Talia Fisher
By Sue & Marcel Weiner
Bat Mitzvah of Madison Johnson
By Ellen & Jerry Jones
Birthday of Sandy Tobias
By June Leib
Celebration of Carmen Schneider
By Laura Good
Honor of Temple Clergy
By Ragen & Roy Elterman

Aline C. Rutland Prayer Book Fund
Purchases of prayer books
Memory of David Genecov
By Rosie Stromberg



ADULT PROGRAMS

Adult Programs

Atid (Young Adults)

Support of Jewish engagement of young adults in their 20s and 30s

Celebration of Rabbi Michael Lewis

By The Palefsky Family
Katherine F. Baum Adult Education Fund
Support for adult education programs
Appreciation of Rabbi David Stern
By Susan Kaminsky
Conversion of Neil Keon
By Meredith & Charles Pryzant

Henry D. Schlinger

Ethics Symposium

Endowment Fund

Support of the ethics symposium

Memory of Larry Genender
By Jacquie & Myron Schwitzer

Memory of Marjorie Levy

By Paula Schlinger & Jim Gerhardt



SOCIAL JUSTICE

Hunger Relief Projects

Collection of funds for hunger relief throughout the year, especially during High Holy Days and Passover

Memory of Olivia Balli

By William Oglesby
Memory of Fannye Braslow Brody

By Sylvia & Malcolm Cohen

Memory of Cindy DiPerisa Schrenk

By Elise & Mitchell Plaksen
Memory of Arthur Dominus
By Mary Ann Lustig

Memory of David Echt

By Toby Niger
Memory of Clara Feldman
By Helen Feldman

Memory of Marion Garmel

By June Leib
By Vesta Snider
Memory of Edward Monroe Gerson

By Leslie & Steven Levin

Memory of Gerre Gilford

By Sylvia & Malcolm Cohen
Memory of Kayce Goldberg

By Shari & Steve Goldberg

Memory of Evelyn M. Harvey

By Katherine, Jim & Chase Harvey

Memory of Maurice C. Harvey

By Katherine, Jim & Chase Harvey

Memory of Harriette Hochberg

By Lawrence P. Hochberg

Memory of Zanne L. Hochberg

By Lawrence P. Hochberg

Memory of Joe Kirsh

By Eileen Ray

Memory of Ruth Kirsh

By Eileen Ray

Memory of Marjorie Levy

By May Sebel

Memory of Helen Pearlstone Loeb

By May Sebel

Memory of Milton J. Loeb Sr.

By May Sebel

Memory of Herman A. Malone

By Katherine, Jim & Chase Harvey

Memory of Mary Martha Malone

By Katherine, Jim & Chase Harvey

Memory of Carmen Schneider

By Cynthia Schneider MD & James Brodsky MD

Memory of Dr. Clifford Seidel

By Susan & Scott Seidel

Memory of Sybill Seidel

By Susan & Scott Seidel

Memory of Peggy Trubitt

By Sherilee & Richard Trubitt

Memory of Max Vernon

By Miriam Vernon

Appreciation of Temple Clergy

By May Sebel
Appreciation of Rabbi David Stern

By Mrs. Margeret Wilonsky

As a Contribution

By Allison & Jack Schwartz
By Arlene & Allen Feltman
By Brad Blumenthal
By Carol & Barry Sobol
By Cathy & Todd Teiber
By Cindy & Bruce Bernbaum
By Dana & Scotty Palmer
By Debbie & Josh Taub
By Deborah & Ivan Safta
By Gwen Spector
By Harriet L. Cohen
By Jeanne & Barry Miller
By Joan Skibell
By Jo-Sandra Greenberg
By Judith & Andrew Finger
By Judy & Don Cohn
By Julie & Bob Herman
By Karla & Larry Steinberg
By Marc Myrin
By Marilyn & Leon Levin
By Mrs. Margaret Wilonsky
By Nancy & Richard Fincher
By Patty Halpern
By Rachelle & Paul Crane
By Ronnie & Dan Cohen
By Rozelle & Richard Gilman
By Stacey & Michael Titens

By Terry & Barry Greenberg

By The Chaput Family

Honor of Rabbi Debra Robbins

By Evelyn & Gene Fox

Marriage of Jackie & Andrew Rubinett

By Evelyn & Gene Fox

Marriage of Joel Weinthal

By Nelson Weil

The Jill Stone Tikkun

Olam Fund

Support of Temple's social justice programs including initiatives, advocacy, projects and lectures

Memory of Charles Bennett

By Janet & Mitch Jacobs

Memory of Scott Birnbaum

By Stacy & Stuart Simon

Memory of Vera Block

By Janice Sweet

Memory of David Braslow

By Sylvia & Malcolm Cohen

Memory of Larry Genender

By Lottie & Bobby Lyle

Memory of Beverly Goldman

By Lottie & Bobby Lyle

Memory of Harold Kleinman

By Kathy Ball & Hank Garrett

By Sylvia & Malcolm Cohen

By Nancy & Ron Fellman

By Judy & Ron Foxman

By Michele & Bob Goodmark

By Jen & Brad Greenblum

By Gayle Johansen

By Judy Kaiser & Miriam & Tom Muer

By Sabina, Eddie, Sofiya & David Kaiser

By Leslie & Bob Krakow

By Lottie & Bobby Lyle

By Leslie & Jay Merrill

By Cindy & Mitch Moskowitz

By The Pearlman Family

By Paula & Irving Pozmantier

By Melissa & Albert Rubinsky

& Family

By Lindsay & Jeffrey Steinberg

By Janice Sweet

Memory of Rochelle Levit

By Lynn & Bob Behrendt

Memory of Marjorie Levy

By Annette Corman

By Arlene & David Steinfeld

Memory of Berniece Mazur

By Dr. Alanna Silverstein

Memory of Dorothy Cerf Schlange

By Dana & Gail Lawrence

Memory of Carmen Schneider

By Lottie & Bobby Lyle

Memory of Marlene Schultz

By Annette Corman

Memory of Frances Sheff

By Sheryl & Gordon Bogen

Memory of Lili Sommer

By Helen Stettler

Memory of Sam Susser

By Lottie & Bobby Lyle

Memory of Roberta Weiss

By Janice Sweet

Memory of Jack Wertheimer

By Sadie Wertheimer

Appreciation of Cantor Vicky Glikin

By Sherry & Eli Olinick

Appreciation of Rabbi Kimberly Herzog Cohen

By Sherry & Eli Olinick

Birthday of Ella Bogdanow

By Jake Sparkman

By Roza Vigushin

Birthday of Alan Sandler

By Sally & Rick Rosenberg

Birthday of Larry Steinberg

By Lisa Stern

Honor of Ella Bogdanow

By Lesley Bogdanow & Matthew Epstein

By Ayla and Noa Epstein

Honor of Nancy Lubar

By Richard Marcus

Priscilla R. Stern Memorial Literacy Fund

Support of literacy projects in the general and Jewish communities

Memory of Lucy Kissner

By Ettie and Melvin Weinberg

Memory of Marjorie Levy

By Sheryl & Gordon Bogen

Memory of Dorothy F. Wittels

By Fran, Jeff, Mollie & Dani Toubin

Appreciation of Rabbi David Stern

By Marcie & Michael Brown

Birthday of Lynn Goldstein

By Gloria & Joe Pryzant

CREATING possibilities TOGETHER 2022-2023 ANNUAL FUND

We invite you to join our Temple family in generously supporting the Annual Fund, Temple's most important annual fundraising initiative.

Scan the QR code or visit
tedallas.org/give/annual-fund
to make your gift online.
You can also text **Gift2TEAnnual to 91999**
to give by text message.



Social Justice Fund for Youth Education

Support of worthwhile educational causes for youth in need

Memory of David Genecov

By May Sebel

Memory of Robert Hirsh

By Sharon Greenwald & Janet Eickmeyer

Memory of Hugo Lederer

By Lisa Katz



YOUTH AND EARLY CHILDHOOD EDUCATION

William P. Budner Youth Library Fund

Purchases of Judaic books and publications for students

Memory of Scott Birnbaum

By Sherri & Alan Darver

Birth of Eden Kikuchi

By Jody Pearson

Early Childhood Education Center (ECEC) Fund

Support of ECEC programs

Memory of Sol M. Gilbert

By Shelley & Richard Hirsh

Memory of Marjorie Levy

By Hillary and Clay Freed

By Marcy & Michael Grossman

By Carly and Scott Goldman

By Susie & Joel Litman

By Peggy & Dave Millheiser

By Frada & Alan Sandler

By Sandy & Susan Schackman

Memory of Ellen Miller

Sterman

By Norman & Barbara Towbin

& Family

Memory of Fred Zimmerman

By Sherri & Alan Darver

Birth of Finley Unterberg

By Joni & Bob Cohan

Honor of Nancy Jayne

Morton

By James M. & Nancy J. Hoak

Honor of McClain Margaret

Morton

By James M. & Nancy J. Hoak

Priscilla R. Stern Memorial

Literacy Fund

Support of literacy projects in the general and Jewish communities

Marriage of Lauren Siegel

By Judy & Alan Matsoff

Paul Lande Summer Camp Scholarship Fund

Scholarships for children to attend Jewish summer camp

Marriage of Lauren Siegel

By Judy & Alan Matsoff

Lomdim Project

Support of an open and inclusive community for YL+E children with special needs

Memory of Beatrix Reid

Lawrence

By Gail & Dana Lawrence

Metz Youth Fund

Scholarships for Jewish activities sponsored by Temple or other Jewish organizations

Memory of Alan Cohen

By Mindy & Rick Cohen

Memory of Annette Kimmel

By Mindy & Rick Cohen

Bat Mitzvah of Katelyn

Herlitz

By Ellen & Allen Metz

Honor of Cantor Vicky Glkin

By Ellen & Allen Metz

Honor of Rabbi David Stern

By Ellen & Allen Metz

Martin and Charlotte Weiss

Religious School Fund

Scholarships for YL+E fees, books and additional expenses

Memory of Florence Staub

By Lynn & Jay Staub

Memory of Frieda S. Wolins

By Hope & Alan Levine

Honor of Meyer Burch

By Ettie & Melvin Weinberg

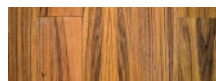
Youth Scholarship Fund

Financial assistance to families for participation in youth programs

Memory of Harry B.

Rosenstock

By Toby Gruber



WRJ

WRJ/Sisterhood of Temple Emanu-El

Support of Women of Reform Judaism

Memory of Rochelle Levit

By Janice Sweet

Memory of Roberta Weiss

By Jacquie Schwitzer

Bat Mitzvah of Harley

Silberman

By Melanie & Michael

Silberman

YES Fund of Sisterhood

Support of the Youth, Education and Service programs of Women of Reform Judaism

Memory of Roberta Weiss

By Celia Saunders & Minnette

Klein

By Phyllis & Marty Mills

By Miriam Cohen

Memory of Henry Geller

By Miriam Cohen

Memory of Marion Simon

Garmel

By Miriam Cohen

By Phyllis & Marty Mills

As a Contribution

By Terri Greenspan

By Miriam Vernon

By Gail Arbetter

By Kathy Freeman

By Leah Beth & Harold Kolni

By Evelyn Fox

By Dodi Friedenberg

By Louise Rosenfield

By Wendy Palmer

By Barb Selz

By Cheryl Pollman

By Sheryl Bogen

By Sarah Fisher

By Sheryl Berk

Marriage of Li & David

Kirschner

By Phyllis & Marty Mills

Yolanda Clark Fund

Provision of scholarships for immersive Jewish youth learning experiences

As a Contribution

By Terri Greenspan

By Sharon Willey

By Nancy Jellinek

By Elisa Reiter

By Vicki Redden

By Joyce Rosenfield

By Bette Morchower

By Jacquie Schwitzer

By Gail Arbetter

By Barbara Miller

By Lynn Friedlander

By Helaine Trachtenberg

By Kathy Freeman

By Tina Wasserman

By Jody Platt

By Dodi Friedenberg

By Ettie Weinberg

By Leah Beth & Harold Kolni

By Harold Kolni

By Nancy Israel

By Beverly Bonnheim

By Evelyn Fox

By Louise Rosenfield

By Wendy Palmer

By Roz Katz

By Barb Selz

By Cheryl Pollman

By Sheryl Bogen

By Sarah Fisher

By Janet Coppinger

Our People

STAFF AT TEMPLE EMANU-EL

We are so glad to see so many of our congregants returning to the building for services, classes and more. Perhaps there are staff members you haven't yet met. Over the next several issues, we'll be introducing you to the friendly faces of Temple staff in the Window and on tedallas.org. And please remember, any member of staff can help you! Just give us a call or stop us in the halls.

Clergy Assistants



JENNIFER DIETZ
*Executive Assistant to Rabbis David Stern
 and Debra Robbins*
 214.706.0000, ext. 2011
jdietz@tedallas.org

Role at Temple: I have been with Temple for 4 ½ years working as an assistant to our wonderful clergy. I am here to support all of your lifecycle and scheduling needs.

Hometown: I was born in Dallas, but home will always be New York!

When I'm not at Temple: I'm attending classes at the University of Texas at Dallas pursuing a degree in Psychology.



MARTHA BOWDEN
*Assistant to Cantors Vicky Glikin
 and Leslie Niren*
 214.706.0000, ext. 2012
mbowden@tedallas.org

Role at Temple: I coordinate all scheduling for the cantors. I also work closely with Hallie Weiner, our B'nai Mitzvah Coordinator. Our department oversees the Music Arts and Culture programming. I have worked at Temple for four years.

Hometown: El Reno, Oklahoma

When I'm not at Temple: I enjoy gardening, cooking, reading and taking long walks.



ALICE MARTINEZ
*Assistant to Rabbis Kimberly Herzog Cohen
 and Michael Lewis*
 214.706.0000, ext. 2010
amartinez@tedallas.org

Role at Temple: I've worked with Temple for 18 years, for four rabbis, the membership department, as the mail and postage person, development and for the Our Temple | Our Future campaign.

Hometown: Dallas

When I'm not at Temple: I am usually with my kids, grandkids, cousins and friends.



MINDY BUTLER
Assistant to Rabbi Amy Rossel
 214.706.0000, ext. 2013
mbutler@tedallas.org

Role at Temple: I manage the schedule for Rabbi Rossel and am the contact for *yahrzeit*, memorial plaques and the Yom Kippur Book of Remembrance. I have been at Temple for four years, and I began as registrar for Youth Learning + Engagement.

Hometown: Sulphur Springs

When I'm not at Temple: I can be found taking in a concert or movie, strolling through a museum or spending time in nature.

Reception Desk



JAYLA JOINER
Temple Receptionist
 214.706.0000, ext. 4201
jjoiner@tedallas.org

Role at Temple: I run the front desk at Temple, and help you get to your appointments, and to the people you need to reach by phone. I have been at Temple since this past summer.

Hometown: Waxahachie, Texas

When I'm not at Temple: I'm planning my wedding and hanging with friends and family.

PURIM 2023

Shushan State of Mind

A BILLY JOEL-INSPIRED PURIM



Purim Spiel and Carnival

Sunday, March 5 | 10AM

Adult Celebration

Monday, March 6 | 7PM

Watch Temple communications
for more details.



Celebration and Remembrance

BECOMING B'NAI MITZVAH



**Sydney Adi Chaput,
January 7**

Daughter of Rachel and
Brian Chaput
Wilson Middle School
Tikkun Olam Project: Lemon
Aide Society; North Texas
Food Bank



**Julia Rose Leib,
January 14**

Daughter of Michelle and
Eric Leib
Renner Middle School
Tikkun Olam Project:
Lemon Aide Society



Dylan Gaswirth and Garrett Gaswirth, January 28

Sons of Dana and Brad Gaswirth
Parish Episcopal School
Tikkun Olam Project: The Birthday Party Project



**Shane Weller,
February 11**

Son of Kelly and Barry Weller
J.L. Long Middle School
Tikkun Olam Project: For the
Love of the Lake



**Livia Wolovits,
February 25**

Daughter of L.E. and Josh
Wolovits
Solar Preparatory School for
Girls
Tikkun Olam Project: Interfaith
Family Services,

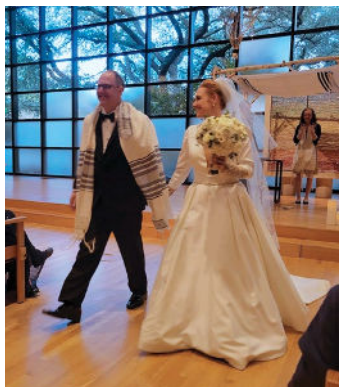
Jack Bender (not pictured), February 4

Son of Lauren and Jason Bender
St. Mark's School of Texas
Tikkun Olam Project: Vogel Alcover

WEDDINGS



Sophie Lynn and Katie Heap



Rebecca Wright and Morris Landau



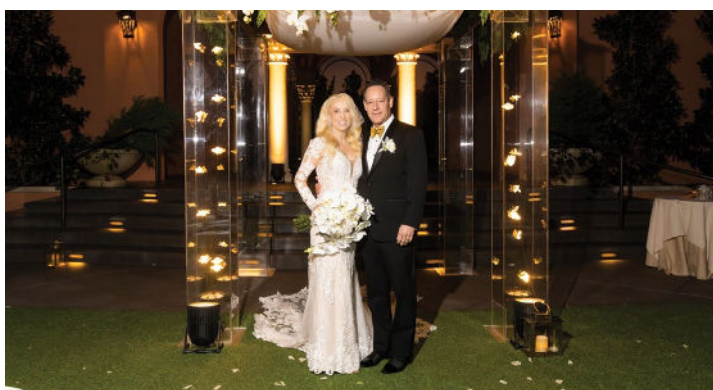
Ilana Josephson and Brandon Paikoff



Lara Gross and Dan Oppenheimer



Ana Gonzalez and Noah Palmer



Renee Jolley and Corey Metz

BABY NAMINGS



Jack Miles Amir
Son of Pam and Daniel Amir
Brother of Remy Amir



Annalise Kate Avnery
Daughter of Meagon Griffin and Daniel Avnery
Sister of Griffin Avnery



Zavier Stone Figueroa
Son of Kira and Erick Figueroa
Brother of Damon and Levi Figueroa
Grandson of Francine and Robert Stiffel



Nancy Florence Martinson
Daughter of Rachel and Matthew Martinson
Sister of Grant Martinson



Adam Levy Morlend
Son of Julie and Robert Morlend
Brother of Esme Morlend
Nephew of Lauren and Jeff Goodman
Great grandson of Patricia and Bennett Goodman



Emma Strasen
Daughter of Malu Rabette and Matt Strasen
Sister of Daniella Strasen



Joseph David Sonego
Son of Taylor and Aaron Sonego
Great grandson of Ettie and Melvin Weinberg



Mae Turley Stich
Daughter of Erin and Steve Stich
Sister of Eve Stich



Ethan Santee
Son of Stefani and Hollis Santee
Brother of Cameran Santee
Grandson of Nancy and Jeff Fuhrman
Nephew of Danielle and Chris Palamara

Everhett Montgomery Braley (not pictured)
Son of Brandi & Allison Braley

CONVERSIONS

Neil Keon
Erin Hillman

NEW AND RETURNING MEMBERS

Kobi Adato, Lyat and Asher Mizrahi
Jon, Sally and Kate Alexis
Marcy Babcox
Michael Bennett
Amy Berg
Emily, Glenn, Fletcher and Ezra Campion
Sandy Cohen
Rachael and Brandon Fisher
Paul Friener
David, Courtney and Simon Gilberg
Leslie Golder
Shaun, Lucky, Ruby and Raja Gordon
Sarah Graubard
Dr. Debbie Hamm
Polina Haryacha, Dmitry and Mark
Turbiner
Angel Hemme

Robert and Rory Hooper
Aaron Kahn and Melanie Kreiter-Kahn
Tammy Kallmeyer
Michael Klein
Steve and Judy Lewis
Nathan and Claire Mitzner
Sara Plotkin and Adam Leightman
Adam and Jocelyn Rigel
Jon, Paula, and Austin Sacks
Patty Sanger
John Sayre and Bettina Kinzer
Samantha, Riley and Summer Standridge
Michael Toppel and Mandi Facher
Amy and Hannah Wallace
Neil and Leo Watson
Staci Weaver

IN MEMORIAM

Harry Robert Alberts
Partner of Michelle Kidwill
Father of Lindsey Alberts and Alex Alberts
Brother of Valerie Halpern, Bobby Alberts and
David Alberts

Susan H. Apter
Wife of Bernard Apter
Mother of Beth Gold and Ronald Apter

Scott Birnbaum
Husband of Suzanne Birnbaum
Father of Jeff Birnbaum, Maddie Blumenthal,
Zoe Blumenthal and Jordan Blumenthal
Brother of Liz Matsil and Sondra Perkins

Frances Blatt
Mother of Sara Blatt and Barbara Lowenstein

Dale Cohen
Mother of Gary Cohen and Romy Kirwin

Ronnie Cox
Husband of Phyllis Cox
Father of Shawn Cox and Corey Cox

Harold Dunievitz

Londa Fischer
Mother of Elexa Fischer

Marion Simon Garmel
Mother of Cindy Weintraub Rogers
Sister of Evelyn Fox, Sue Pickens-Owens and
Samuel Simon

Dr. David Genecov
Son of Sally Genecov
Husband of Dr. Lisa Genecov
Father of Michael Genecov, Max Genecov,
Matthew Genecov and Megan Genecov
Brother of Dr. Jeff Genecov and Julie Shrell

Maureen Gordon
Mother of Phillip Gordon and Michelle Nelson
Sister of Reva Schulman

Charlotte Steinberg Gottesman
Mother of Marcia Rafkin, Linda Baum,
Sandy Gottesman and Morris Gottesman
Sister of Jackie Hochberg

Marilyn Kreditor
Mother of Cliff Kreditor

Helen Lansburgh
Mother of Al Zeve, David Zeve and Michael Zeve

Marjorie Kanter Levy
Mother of Nancy Levy Szor, Sally Levy Rosen and
Kathy Levy

Jane Loeb
Sister of Peter Loeb

Muriel Liebers Miller
Mother of Ann Ruth Miller

Susan Richman
Stepmother of Jonathan Richman and
Michael Richman

Karen Samuelsohn
Wife of Phillip Samuelsohn

Miriam "Mimi" Satz
Mother of Todd Satz

Marlene Marcus Schultz
Mother of Bob Schultz and David Schultz
Sister of Richard Marcus

Frances Sheff
Wife of Joe Sheff
Mother of Mike Sheff and Joanne Meyer

Igor Statnikov
Father of Mark Statnikov

Marjorie Davis Yancy
Mother of Michael Seiner, Michelle Phung, Cathy
and Harriss

Fred Zimmerman
Husband of Marlene Zimmerman
Father of Shelley Galant, Bonnie Zimmerman,
Cindy Durbin and David Zimmerman

151ST ANNUAL MEETING

WHAT A YEAR!

Review the successes of the past year, vote on new trustees and officers and look ahead to the future at the 151st Annual Meeting of Temple Emanu-El.

Wednesday, March 29 | 6:30PM | Linz Hall

SHINE THE LIGHT ON MENTAL WELL-BEING

SUPPORT AND RESOURCES FOR SPIRITUAL AND MENTAL WELL-BEING

Grief Support on Zoom

First Tuesday of the month: Feb. 7 and March 7

For Zoom link, contact Meredith Pryzant, Director of Member Support, mpryzant@tedallas.org or 214.706.0000.

Jewish Family Service Support Groups

Our community partner, Jewish Family Service, helps adults, children and families navigate mental health challenges and coping skills through a variety of support groups. To learn more, please visit jfsdallas.org and search for support groups for children, teens and adults.

Substance Abuse Support for Friends and Families

Thursdays every week from 5:30-6:30PM in person and on Zoom

Contact for info and Zoom link: Freda Heald, fredaheald@yahoo.com

HERE FOR YOU

Temple clergy and staff are available to support our community members navigating mental and physical health issues. Please reach out to us for help if you, a friend or family member is experiencing a crisis or an ongoing issue.

NO BARRIERS

Finances should never be a barrier to participation in Temple life. Confidential financial assistance is available for most Temple events, tuition and dues. For more information, contact Meredith Pryzant, Director of Member Support, mpryzant@tedallas.org or 214.706.0000.



‘Hope for a Better Future’

POLYPHONY COMES TO TEMPLE ON FEBRUARY 12 | BY LIVIA BERNSTEIN



The mission of the nonprofit Polyphony is to bring together Jewish and Arab Israelis to listen and connect, sometimes in disagreement. But even its founder Nabeel Abboud Ashkar, pictured left, admits that’s not how the organization began.

Nabeel says the story began in Nazareth, Israel, with parents who made sure he and his brother could learn and experience music all over Israel. After getting his master’s degree in Germany in 2006, Nabeel returned to Nazareth to start the first classical music conservatory for Arab students, taught by Jewish teachers from Tel Aviv. “Originally there wasn’t an intention to bridge cultures, the goal was to bring classical music to the Arab community.”

After community support and years of students winning awards for music of all kinds, Nabeel realized the power behind the work that they were doing, not only for the Arabs of Nazareth but for Israeli culture as a whole. He says “A big part of the transformation of the mission for me, was traveling to places like Temple Emanu-El Dallas as an Arab man and being able to see Judaism outside of Israel. I was encouraged to look for the good in people and create a chance to connect and listen.”

Today, Polyphony offers music education and appreciation in Arab schools and the Nazareth music conservatory. It also creates cohorts of students who learn how music can create common ground and build relationships. The work is always focused on inclusion and respect, he says.

One example of the work Polyphony is doing is the Galilee Chamber Orchestra, a high-level orchestra made up of Jewish and Arab musicians who made their Carnegie Hall debut in 2022. He describes the orchestra as a “microphone,” a message to the world that music truly does bring people together.

“Polyphony is the hope for a better future,” he says.

Don’t miss Polyphony at Temple at 4PM on February 12 in Stern Chapel for the inaugural Sunday Sounds in Stern, a new series of performances to start your week on a high note. **Register: tedallas.org/events**

“We are thrilled to bring Polyphony to Temple Emanu-El through the generosity of Friends of MAC (Music, Arts and Culture) and the Fruhman Foundation in memory of Beverly Goldman. It is powerful to think that Temple Emanu-El is helping to plant some of the seeds that will sprout into lasting friendships, collaboration, and — we hope — peace-making among the participants.” *Cantor Vicky Glikin*

Family Album: Make the most of Jewish life with Temple's help

Deeply Rooted

Caring for the environment is a Jewish value and a fun family adventure. At this season, we look toward Tu BiSh'vat, the Jewish new year of the trees, for inspiration and ideas to take care of the earth. This year, Tu Bi'Sh'vat takes place on Feb. 5-6. Watch YL+E and Temple communications for additional resources for your family.

Here are some ideas from PJ Library to get you started.



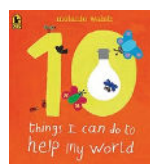
What's Jewish about the environment? *Bal taschit*, from Deuteronomy, means "don't destroy needlessly." Use that principle to recycle paper, turn off light switches and find new uses for toys and clothes we don't use anymore.



Ready, set, go: Make a game out of learning about conservation. Guess how much water it takes to brush teeth or time how long the refrigerator door stays open. Think of all the easy ways you can conserve energy in everyday activities.



I'm in! How can I learn more? Here are 10 books for children of all ages.



1
10 Things I Can Do to Help My World
by Melanie Walsh
Ages 3 to 4



2
26 Big Things Small Hands Can Do
by Coleen Paratore
Ages 2 to 4



3
The Forever Garden
by Laurel Snyder
Ages 5 to 7



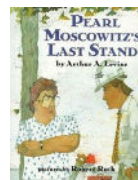
4
Good Night, laila tov
by Laurel Snyder
Ages 2 to 3



5
Just a Dream
by Chris Van Allsburg
Ages 8 and up



6
Netta and Her Plant
by Ellie Gelman
Ages 4 to 5



7
Pearl Moscovitz's Last Stand
by Arthur Levine
Ages 7 to 8



8
Take Care
by Madelyn Rosenberg
Ages 6 months to 2 years



9
Thank You, Trees
by Gail Langer Karwoski & Marilyn E. Gootman
Ages 6 months to 2 years



10
Tikkun Olam Ted
by Vivian Newman
Ages 2 to 3



IN THE Know

PARENT EDUCATION

A World of Difference

JANUARY 29, 2023 | 9-10:30AM | Linz Hall

Featured Speaker: Sherasa Thomas, Education Director, Anti-Defamation League Texas/Oklahoma.

ADL's A World of Difference® Institute recognizes that attitudes and beliefs affect actions. Each of us can have an impact on others, and ultimately, on the world in which we live. As we work to make our world a better place for all identities, we must first begin with ourselves, our home and our community. Join us as ADL shares tips on discussing race and bias with your children.

Register: tedallas.org/events



Time to Play

Beginning Jan. 15, younger siblings of students in Temple's Youth Learning + Engagement program are invited to Temple on Sunday mornings for YL+E Junior Playground.

Children from toddler to YL+E age and their families can gather in the Zale Gan Chaverim (across from the YL+E office). The morning opens at 9AM, and at 10:30AM, families may join older siblings for t'filah in Stern Chapel. It's a great chance, weather permitting, for meeting other Jewish families and spending time in Temple's beautiful spaces.

For questions, contact Karin Lester, Director of Family Engagement, at klester@tedallas.org



Wendy Mogel, noted parenting author, visits Temple Emanu-El

By Ilana Paikoff

Wendy Mogel, a clinical psychologist and best-selling author, has made a career of understanding and communicating the challenges of modern parenting and family life. She'll be visiting Temple Emanu-El at 7PM on Jan. 19 to speak to parents of young children.

The Window caught up with her before her visit to learn more about her career path and her wisdom for modern parents.

We are so looking forward to your visit at Temple. Can you tell us about what led you to your profession?

In high school, I wrote and performed puppet shows for children's birthday parties. Before the party, I would meet with the parents and learn about the child's favorite things such as TV shows, games, and the name of their pet and then work these details into the show. When I got to college, I worked every summer at a Jewish summer camp for children aged 5-10 with emotional challenges. This camp doubled as a training ground for future therapists, and counselors were also taught how to write psychological test reports. I can single-handedly say that the children I met at this camp were the most interesting people I have ever met in my life; some talked in rhymes, some would randomly shout out words like "onion," and some slept standing up to imitate what horses do. I had to find the words, tone and subject matter that would reach and engage these children.

You have shared how you delved more deeply into Judaism after you had children. How has your practice informed your professional life?

I wasn't raised religious, so when I started to learn about our ancient traditions, I uncovered incredible wisdom for modern parents. I decided to start teaching a class for parents called "Homework, Food, Sex, Death and the Holy: Using Jewish Wisdom to Raise Self-Reliant Children," and soon after, a book editor contacted me and asked me if I was interested in writing a book. I happily agreed and wrote "The Blessing of a Skinned Knee." I never expected the number of people to love this book and treat it like a classic. I then wrote two more books and started to give hundreds of lectures and I am honored to be where I am today.

The theme of your talk at Temple Emanu-El is communicating with children. Of course, it's important all the time, but why now especially, post-pandemic?

After spending so much time in isolation, the newest generation is sophisticated yet immature. I am seeing parents give in to their child's demands with words like "No, no, no... okay go ahead." It is excruciatingly important for parents to make rules and hold to those rules no matter the circumstances. Children are both spiritual guides and brilliant attorneys with excellent arguing skills. Parents spend too much time negotiating with their kids, when instead they should be setting rules and making sure all members of the family adhere to those rules.

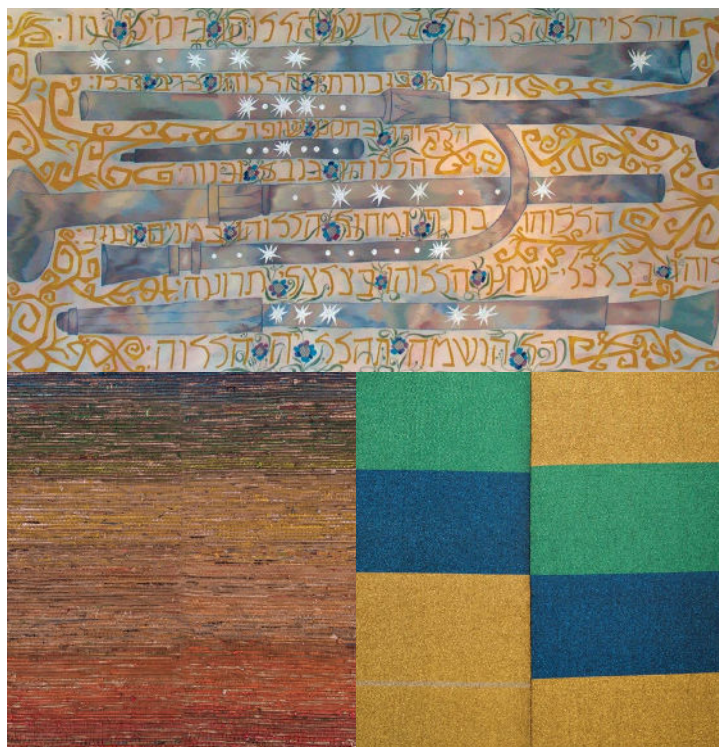
How can reframing questions be a powerful parenting tool?

Even "how was school?" is a loaded question. What the children hear is "How did you do on the math test?" or "Did you get your grade back for that science project you did at the last minute?" Instead, parents should try "I thought about you today when ..." and end the sentence with something that has been lighting the child up lately. It doesn't need to be something deep and educational to spark a connection with children after a hard day at school. It is telling them that you are holding them in mind when you are not together, which is immensely more special and beneficial toward their development. Beyond simple conversation, music and nature are crucial after the isolation we have been in. We need to worship, dance and sing together and cherish the time we have together so that we can all grow as God's children.

Help us understand the effect that our digital devices have on our young children.

During the pandemic, we defaulted to working from home and the children had to do school from devices at home. Now we are trying to find a way to retrace our steps. One of the phenomena I have discovered is that when parents walk around the house talking on the phone in front of the children or other people, it is very distressing to the human brain because the other people in the room cannot complete the other half of the conversation. My number one piece of advice to parents is to please not beat yourself up but also look at the example you are setting for your children.

Women Who Weave



Explore with Rabbi Debra Robbins in these three lunchtime learning sessions how women have woven beauty and holiness into the spiritual life of our congregation for 150 years through primary documents, archival objects and conversation.

Lore and Legacy: Treasures Tell the Truth

March 8, 2023: Documents and objects illuminate previously untold strands of the narrative of how the Dallas Hebrew Benevolent Society became Temple Emanu-El and women's leadership roles.

Threads that Endure: Tapestries Share Our Stories

April 19, 2023: The fabric doors of Olan Sanctuary and Stern Chapel, and the Psalm 150 tapestry in Linz Hall express how women's creativity and generosity inspire our spirituality.

Rabbinic Robes: Revealing Ourselves in Every Generation

May 2, 2023: Rabbi Robbins (1991-present) will join with Rabbi Ellen Lewis, (Temple Emanu-El's first female rabbi, 1980-1985) for a conversation about how women clergy have shaped congregational life over the past 50 years.



Rabbi Debra Robbins, 1990s

Rabbi Ellen Lewis, 1980s

B'YACHAD NIGHT OUT: MITZVAH SEEKERS NEEDED!

Help provide a night out for parents in our community and enjoy a rewarding time yourself by creating fun experiences for children with special needs. Volunteers are needed to help run various exciting activities.

The B'yachad Night Out program is generously supported by a grant from the Jewish Federation of Greater Dallas.



Saturday, February 25, 2023
4:30-8:30PM

RSVP and Contact: Karin Lester, Director of Family Engagement, klester@tedallas.org

Pioneers on the Prairie:

A scholar's perspective



Rabbi Carole B. Balin, Ph.D., carolebalin.com

Back in 1872, Reform Judaism as we know it did not exist. Nearly 50 years later, the Reformed Society of Israelites for Promoting True Principles of Judaism would emerge in Charleston. But the organization that would become Temple Emanu-El had more pressing concerns: building a burial space and finding a worship space for the High Holy Days.

It is details like these that fascinate Rabbi Dr. Carole Balin, Professor Emerita of Hebrew Union College-Jewish Institute of Religion and the scholar in residence for the 2023 Lefkowitz Lecture on Jan. 27-28.

“It’s remarkable that Dallas became a fertile ground for the rise of Reform Judaism even before Cincinnati, the motherland of Reform Judaism,” says Rabbi Balin. “Dallas was in the vanguard and continues to be in the vanguard of Reform Judaism.”

Rabbi Balin, whose research specializes in gender issues, modern Jewish history and American Jewish studies, is preparing three Shabbat teachings for the weekend, one of a series of learning opportunities for the TE150 celebration year.

“I am being called on to put an emphasis on women’s roles in your history,” she says. “From speaking to people like Ellen Lewis, a veteran woman rabbi who made her first stop in Dallas, I will be helping to bring the history alive by talking to people who have been part of it.”

The Shabbat evening sermon will set up a framework for understanding how Temple Emanu-El fits into the larger history of Reform Judaism. On Shabbat morning, she’ll be sharing her research about the bat mitzvah ceremony and the impact 12- and 13-year-old girls have had on changing Jewish communities. And at Havdalah on Saturday evening, she’ll focus on lay women’s roles at Temple and in the broader community.

Temple Emanu-El has been on Rabbi Balin’s radar since 2016, when she was a special guest at a service honoring Rabbi Debra Robbins on her 25th anniversary at Temple. “That was the opening gambit for me in learning about the congregation; I did take a look at some of the related history for Debbie’s tenure,” she says. “That was the tip of the iceberg, now I’ll be fleshing out the rest of the history.”

Rabbi Balin worked at HUC-JIR for 25 years, and now teaches across the country and the world. She chairs the board of the Jewish Women’s Archive, an online resource. Her current research focus is on bat mitzvah. “It’s really a story about coming of age, how bat mitzvah became a fixture in the Jewish lifecycle. I curated an exhibit about bat mitzvah for the Weitzman National Museum of American Jewish History of hundreds of voices of Jewish women and girls, and I’m finally putting it on paper.”

She says she values the opportunity “to create a chapter in the history as it unfolds over next year. I’m glad I can provide a framework for the year as the congregation touches its past.”

Schedule for Shabbat with Rabbi Carole Balin

January 27

Shabbat evening service, with sermon by Rabbi Balin | 6:15PM

January 28

Shabbat morning service, with sermon by Rabbi Balin | 10:30AM
Havdalah, with teaching by Rabbi Balin | 7PM

Register: tedallas.org/events



The Longest Journey, the Warmest Welcome

By Ilana Paikoff

The Veremiov family of Ukrainian refugees arrived safely in Dallas in December, with Temple's help, to start the next chapter of their lives. Temple is one of the participating congregations in the HIAS Welcome circle of volunteers. Prior to the family's arrival, Temple volunteers helped fill out paperwork to assist with visas; worked with Airbnb to provide housing; worked with Aikin Gump Strauss Hauer & Feld on employment authorization and collected home furnishings. The Early Childhood Education Center also donated various items for the children, including car seats, diapers and toys.

Volunteer Eugene Berman, who speaks Russian and translates when needed, describes Dmytro Veremiov's reaction to their warm welcome. "Nobody has ever greeted us this way," Dmytro told Eugene. "We now know that there are people that are simply kind and want to help others. Thank you."

Volunteers are currently working on getting the Veremiov family a car and bike and will help them move into their apartment in early January.

If you would like to help this family and other families in need, please donate to Temple's disaster relief fund by scanning the QR code below.



"We now know that there are people that are simply kind and want to help others. Thank you."



Touring and Touchstones

By Livia Bernstein

I recently had the opportunity to spend 10 days in Israel as a Schultz Fellow, in the Schultz Family Israel Fellows program through the Jewish Federation of Greater Dallas. This trip was the culmination of a year spent studying Israel and Israel education with 11 Jewish youth engagement professionals around Dallas.

We spent time in the Western Galilee, observed Shabbat in Jerusalem and finished our adventures in Tel Aviv. We saw the importance of bringing together the Arab and Jewish communities through shared interest and values at A-CAT (Akko Center for Arts and Technologies). At the beautiful, inclusive Kishorit, a kibbutz for adults with special needs, we witnessed the pride and independence of residents who work in the bakery, winery and pet kennels. And we saw for ourselves the amazing initiatives coming out of Israel at the Peres Center for Peace and Innovation.

Some of the most special experiences were immersing ourselves in the culture and people of Israel, such as shopping at the bustling Machane Yehuda market just before Shabbat. A lovely Druze family hosted us for lunch and shared their experience. At Kfar Azza, a kibbutz on the Gaza border, we listened to a resident's story about what life is like when your safety is almost always at risk.

This trip truly gave me the opportunity to connect with more than just the land and history of this amazing place, but with the people. People who want to make change and come together to do it; who value family, inclusion and togetherness; who have each others' backs, even under the toughest circumstances. People just like me.



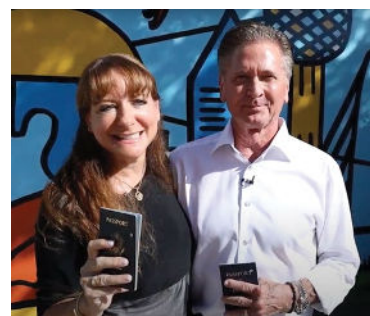
Community Mission to Israel November 7-13, 2023

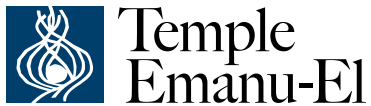
As Temple celebrates its 150th anniversary, we are pleased to support the Community Mission to Israel, led by our own congregants Debbi K. Levy and Barry Rothschild.

You'll experience seven days of celebrating Israel's 75th birthday in Israel with the Jewish Federation of Greater Dallas. Enjoy exclusive tours, unparalleled access to sites, and the opportunity to create your own special tracks for first timers, adventurers, food and wine aficionados, culture seekers and business and innovation enthusiasts.

To learn more about the trip visit:
jewishdallas.org/ISRAELMISSION

Scan the QR code below to watch a video.





8500 Hillcrest Road | Dallas, Texas 75225
214.706.0000 | tedallas.org

The Window (USPS #017-824) is published six times per year by Temple Emanu-El Congregation, 8500 Hillcrest Road, Dallas, TX 75225-4204. Periodicals Postage Paid at Dallas, Texas.

POSTMASTER, send address changes to:

Temple Emanu-El Window
8500 Hillcrest Road
Dallas, Texas 75225-4204.

PERIODICALS
Time Sensitive Material

